

# 新収浮世絵版画目録 えどげいじゅつ

EDO GEIJUTSU -Catalogue of New Acquisitions



No. 95  
2021.12

原書房  
HARA SHOBO  
Tokyo

# 原書房

<http://www.harashobo.com>

101-0051

東京都千代田区神田神保町2-3

Tel 03 5212 7801

Fax 03 3230 1158

eメール [ukiyoe@harashobo.com](mailto:ukiyoe@harashobo.com)

営業時間:

午前10時 - 午後6時

日・月・祭日 休業

郵便振替 00130-2-37578

みずほ銀行 九段支店

当座 0142732

三菱UFJ銀行 神保町支店

普通 0748571

三井住友銀行 神保町支店

普通 2003925

ゆうちょ銀行 ○一八支店

普通 9221851

当面の間、営業時間は以下の通りとなっております。

火～土曜 午前11時 - 午後5時

上記以外でご来店ご希望の場合はお問い合わせください。

Please note temporary gallery hours as below.

Tue - Sat 11am - 5pm

Otherwise by appointment

## HARA SHOBO

<http://www.harashobo.com>

2-3 Kanda Jimbocho, Chiyoda-ku,

Tokyo 101-0051 Japan

Tel +81 (0)3 5212 7801

Fax +81 (0)3 3230 1158

e-mail [ukiyoe@harashobo.com](mailto:ukiyoe@harashobo.com)

Gallery Hours:

Tuesday - Saturday, 10am - 6pm

Closed on Sundays, Mondays and Public Holidays



地下鉄神保町(三田線・新宿線・半蔵門線): A6出口 徒歩1分

JR水道橋駅(総武線): 東口 徒歩10分

JR御茶ノ水駅(中央線・総武線): 西口 徒歩15分

Jimbocho Subway Station (Mita Line, Shinjuku Line, Hanzomon Line) Exit A6: 1min.

JR Suidobashi Station (JR Sobu Line) East Exit: 10mins.

JR Ochanomizu Station (JR Chuo Line, Sobu Line) West Exit: 15mins.





お客様各位

平素は格別のご愛顧を賜り厚く御礼申し上げます。新収浮世絵版画目録「えどげいじゅつ」95号をお送りいたします。

今回は疱瘡絵、麻疹絵のコレクションを掲載いたしました。当時は大真面目だった養生や予防法、まじないなどのトンデモぶりを笑いたくるところですが、コロナの現代においても多くの人が飛び交う噂に惑わされ、非科学的な信条を持つ人もいたことから、結局人は変わらないものだと感じさせられます。麻疹や風疹が今でも脅威であるようにこの先もコロナとも戦い付き合っゆくしかないのかもしれません。尚、このコレクションの後半を年明けに発行する国内向け目録に掲載いたしますのでご期待ください。

信じがたいスピードで感染状況が落ち着き、ようやく経済も動き出したように思えます。昼間の神保町は人通りも増えましたが、夕方には閑散としてしまい、まだまだ元通りとは言えないようです。先の見通せない状況ですので、原書房では引き続き今まで通りの感染予防策をとりギャラリーを営業してまいります。

皆様のご健康をお祈りするとともに、ご注文、ご来店を心よりお待ちしております。

原書房 原 敏之

Dear Customers

Thanks to all customers worldwide have given us orders daily and keep us running. We are pleased to present our catalogue of new acquisitions, *Edo Geijutsu*, No. 95.

This issue, there is a small collection of epidemic related prints, such as smallpox and measles. Cure and prevention, or prayer at the time appear quite nonsense and funny to modern medical science. However, ironically, we find people have not changed since then as we see modern people are still being mislead by false rumors and unscientific belief. Like measles are still threat to us, we may not be able to exterminate COVID-19, but have to adopt and coexist.

Number of infections have reduced (suspiciously) rapidly in Japan and business has slowly started running, but even near future is still unpredictable. I hope that the day we can welcome customers from abroad to our gallery would come soon. Meanwhile, we wish your health and look forward to receiving your orders.

Toshiyuki Hara  
HARA SHOBO



## 疱瘡絵

疱瘡(天然痘)は死亡率が高く、人々は「命の選別」に苦められてきました。疱瘡神が取り憑くことによって罹ると信じられ、その神をもてなし送り出すことで罹っても軽く済むと考えられていました。また、赤い色を嫌うと言われ、罹ると赤い服を着たり、調度品を赤いものにしたたり、鐘馗(No.1, 2, 6, 7)、鎮西八郎為朝(No. 3)、桃太郎、獅子頭(No. 4)、みみずく(No. 5)、春駒、犬張子、鯛車などの縁起物を赤色で刷った「疱瘡絵」が多数出版されました。部屋に飾られ、治癒すると燃やしたり川に流されたりしたため、残っているものは希少です。

### Hoso-e (Smallpox pictures)

Smallpox has been feared because of its high case fatality rate. Infection was believed to be because of possession by smallpox god. People treated with respect and prayed to send the god off without severity. The god was thought to avoid red color. Patients wore red clothes and decorated their room in red. *Hoso-e* (Smallpox pictures) were also produced. Motifs were mostly legendary figures or auspicious objects. Extant copies are rare, as prints were burnt or thrown to river after the patient are recovered.



1 国貞 (KUNISADA)  
中村芝翫九変化之内 鐘馗  
刷良 保存並 少汚 少傷  
38x25.7cm. ¥50,000



2 芳綱 (YOSHITSUNA)  
疱瘡絵 鐘馗 嘉永頃 (c.1848)  
刷良 保存並 少汚 少傷  
左下少破補修 蔵印 薄裏打  
31x21.8cm. ¥200,000



3 芳綱 (YOSHITSUNA)  
疱瘡絵 鎮西八郎為朝 嘉永頃 (c.1848)  
刷良 保存良 少汚 蔵印 裏打  
31x22.2cm. ¥230,000



4 芳綱 (YOSHITSUNA)  
疱瘡絵 獅子頭 嘉永頃 (c.1848)  
刷良 保存良 少汚 蔵印 裏打  
31.5x22cm. ¥200,000



5 芳綱 (YOSHITSUNA)  
疱瘡絵 みみずく 嘉永頃 (c.1848)  
刷良 保存並 少汚 少傷 折 裏打  
31.8x19.7cm. ¥200,000



6 国周 (KUNICHIKA)  
鐘馗 3枚続 明治17年 (1884)  
刷良 保存並 少汚 少シミ 少傷補修  
各約35.3x25cm. ¥75,000



7 清親 (KIYOTHIKA)  
鐘馗図 絹本 軸装 一幅  
明治後期 (Late 19c)  
118x41.5cm. ¥150,000





8 芳盛 (YOSHIMORI) 麻疹能毒合戦図  
安政6年 (1859) 刷良 保存極良  
各約36x25.2cm. ¥300,000



9 芳盛 (YOSHIMORI)  
麻疹病中食物弁 文久2年 (1862)  
刷良 保存良  
36.5x26cm. ¥120,000



10 芳盛 (YOSHIMORI)  
厄病除之神 文久2年 (1862)  
刷良 保存良  
35.8x25.5cm. ¥120,000

## 麻疹絵

麻疹は20～30年ごとに流行し、大人でも罹るため感染者も多く、恐れられてきました。治療法も確立せず、タラヨウの葉にまじないの歌を書いて川に流したり、桶や釜を頭にかぶせたり、須佐之男命のお札を門戸に貼ったりなど、神頼みやまじない、日常の食物の禁忌や節制、病後の養生が主な対処でした。錦絵が盛んだった文久2年(1862)の大流行では多くの麻疹絵が出版されました。

## Hashika-e (Measles pictures)

Measles occurred every 20-30 years. Number of infections was large, as not only children, but also adults were infected and the cure was not established. People only relied on folk remedies and charms.

In the occurrence in 1862, many *Hashika-e* (Measles pictures) were produced. Most describes temperance on diet and recuperation, or charms, such as figure of Susano no Mikoto, or spell (poem) scratched on a lusterleaf holly (Tarajo) to be flown into river.



11 芳藤 (YOSHIFUJI)  
麻疹退治戯の図  
文久2年 (1862)  
刷良 保存良  
36.5x25.5cm.  
¥130,000



12 芳幾 (YOSHIIKU) 三気男はしかたいじ 2枚続  
文久2年 (1862) 刷良 保存良 薄裏打  
各約35.6x24.5cm. ¥150,000



13 芳幾 (YOSHIIKU) かけ合権八長兵衛 2枚続  
文久2年 (1862) 刷良 保存良 極少シミ  
各約35x25.5cm. ¥180,000



14 芳幾 (YOSHIIKU)  
麻疹養生草 文久2年 (1862)  
刷良 保存良  
35.8x25cm. ¥120,000



15 芳年 (YOSHITOSHI)  
出雲国麻疹除御神 文久2年 (1862)  
刷良 保存並 ヤケ 鉛筆落書  
36.6x25cm. ¥40,000



16 芳宗 (YOSHIMUNE)  
はしかの養生 文久2年 (1862)  
刷良 保存良 少虫穴補修  
35.5x24.8cm. ¥100,000



17 芳虎 (YOSHITORA)  
麻疹養生之伝  
文久2年 (1862) 刷良 保存良  
35.8x24.8cm. ¥120,000





18  
無款 (UNSIGNED)  
当世雑語麻疹合戦記 3枚続  
文久2年 (1862)  
刷良 保存極良  
各約36.2x25.5cm.  
¥1,200,000



19 広重二代 (HIROSHIGE II)  
はしか虫毒合戦 2枚続 文久2年 (1862)  
刷良 保存良 極少虫穴  
各約35.5x24.5cm. ¥250,000



20 芳艶 (YOSHITSUYA)  
麻疹厄病除 文久2年 (1862)  
刷良 保存極良  
35.9x25.3cm. ¥150,000



21 芳艶 (YOSHITSUYA)  
はしかまじなひおしえ宝  
文久2年 (1862)  
刷良 保存良 少トリム  
33.8x25.2cm. ¥100,000



22 了古 (RYOKO)  
麻疹まじなひ  
文久2年 (1862)  
刷良 保存良  
35.9x25cm. ¥140,000



23 国利 (KUNITOSHI)  
流行はしかの説  
明治18年 (1885)  
刷良 保存良  
37.3x25.2cm. ¥120,000

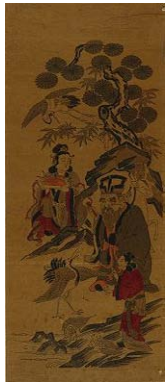


24 国利 (KUNITOSHI)  
妊婦炎暑戯 一名五頭十體の図 2枚続 明治14年 (1881)  
刷良 保存良 極少汚 極少シミ 少傷 少虫穴補修  
各約36.4x24.2cm. ¥85,000



25 無款 (UNSIGNED)  
父母の恩を知る図 3枚続 明治13年 (1880)  
刷良 保存良 右図少虫穴補修  
各約37.1x24.8cm. ¥150,000





26 無款 (UNSIGNED)  
福祿寿老人 木版筆彩  
刷良 保存並  
ヤケ 傷  
67.7x28.5cm. ¥35,000



27 無款 (UNSIGNED)  
福祿寿老人 合羽刷  
刷良 保存並 ヤケ  
傷 少シミ 少虫穴  
56.8x26cm. ¥25,000



28 湖竜齋 (KORYUSAI)  
色道取組十二番 第九図 天明頃 (c.1780)  
刷良 保存良 極少虫穴 右端少傷 折  
25.3x38.7cm. ¥180,000



29 英泉 (EISEN)  
男女図  
刷良 保存良  
18.3x25.8cm.  
¥40,000



30 英山 (EIZAN)  
風流子宝遊十二月 二月  
文政頃 (c.1818)  
刷良 保存良 少汚  
傷及極少虫穴補修  
36x26.2cm. ¥130,000



31 英山 (EIZAN)  
小紫権八 柱絵 文化頃 (c.1804)  
刷良 保存良 一部薄み  
59x10cm. ¥85,000



32 英泉 (EISEN)  
階段を昇る芸者 竪2枚続 文政頃 (c.1818)  
刷良 保存良 極少汚 下図左下角少薄  
各約36.5x24.8cm. ¥150,000



33 英泉 (EISEN)  
傘持美人 竪2枚続 天保頃 (c.1830)  
刷良 保存良 極少ヤケ 下図弱折  
各約37.5x24.8cm. ¥280,000



35



36

35 豊国三代 (TOYOKUNI III)  
談織時世好 竪2枚続 天保15年 (1844)  
軸装 刷良 保存良 少ヤケ 少シワ 極少シミ  
約69x23cm. ¥45,000

36 芳虎 (YOSHITORA)  
花魁図 竪2枚続 安政6年 (1859)  
軸装 刷良 保存良 極少ヤケ トリム  
71.5x24.1cm. ¥75,000



37 貞秀 (SADAHIDE)  
岡田屋内 壽加岡  
天保頃 (c.1830)  
刷良 保存良  
37.8x25.7cm. ¥38,000



34 英泉 (EISEN)  
立美人 竪2枚続  
文政末頃 (c.1829)  
刷良 保存良 少ヤケ  
各約35.5x24.5cm.  
¥95,000





38 国丸 (KUNIMARU)  
**琴棋書画 基 伊勢古市 牛車楼** 文化頃 (c.1803)  
 刷良 保存良 39x26.4cm. ¥350,000



39 国貞 (KUNISADA)  
**美人合** 天保頃 (c.1830)  
 刷良 保存良 少汚 少ヤケ  
 少虫穴補修  
 37x25cm. ¥80,000



40 国貞 (KUNISADA)  
**美人傾城いろはたんか 二 海老屋内 染井** 天保頃 (c.1830)  
 刷良 保存良 少汚 角少破補修  
 38.2x26cm. ¥58,000



43 豊国三代 (TOYOKUNI III)  
**十二月の内 衣更着 梅見** 3枚続 安政元年 (1854)  
 刷良 保存良 極少虫穴補修  
 各約37x25.4cm. ¥180,000



41 豊国三代 (TOYOKUNI III)  
**難有御代ノ賀界絵**  
 弘化頃 (c.1844)  
 刷良 保存良  
 36x24.5cm.  
 ¥120,000



44 豊国三代 (TOYOKUNI III)  
**奥御殿遊楽之図** 3枚続 嘉永頃 (c.1848)  
 刷良 保存極良 各約37.1x25.8cm. ¥45,000



42 豊国三代 (TOYOKUNI III)  
**十千兄弟ノ内 壬**  
 弘化頃 (c.1844)  
 刷良 保存良 極少汚  
 37.4x26cm.  
 ¥28,000



45 豊国三代 (TOYOKUNI III)  
**見立源氏はなの宴** 3枚続 安政2年 (1855)  
 刷良 保存良 極少汚 極少シミ 中央シワ  
 各約37.5x25.4cm. ¥50,000



46 房種 (FUSATANE)  
**四季之遊覧 夏** 3枚続 文久2年 (1862)  
 刷良 保存極良 各約37x25cm. ¥60,000



49～56 暁山 (GYOZAN)  
 艸木華鳥図会  
 明治11年 (1878)  
 特記なき限り刷良 保存良  
 各約37x25cm.

49 鎧蝶 カナリヤ  
 紅秋気 黄秋気 鳳仙花  
 左端少シミ ¥10,000

50 雀 蝶 芙蓉  
 野菊 老少年  
 ¥12,000



49



50



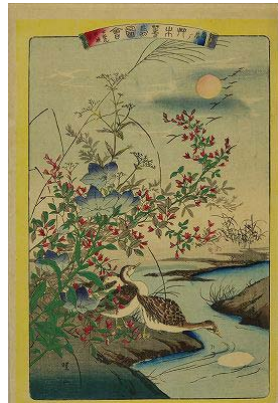
47 豊国三代 (TOYOKUNI III)  
 二拾四好今様美人 うなぎ好  
 文久3年 (1863) 刷良 保存良  
 35x24.9cm. ¥70,000



51 山雀 合歡木 陵雀花  
 左端少シミ ¥10,000



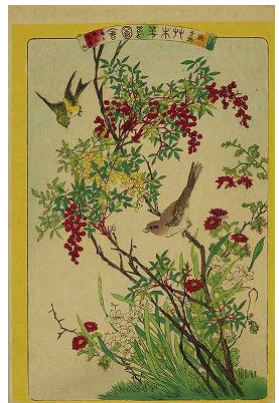
52 寿たみ鳥 つばめ 桜柳  
 ¥15,000



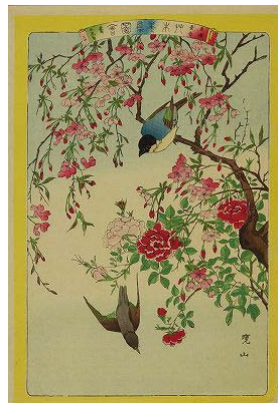
53 月落雁 女郎花 桔梗 萩  
 ¥18,000



54 柘榴花 紫薇把  
 鸚哥 綿帽子鳥  
 極少シミ ¥12,000



55 鴉 青鴉 南天  
 水仙 寒菊 ¥12,000



56 鶯 木兎鳥 糸梅 長春  
 ¥15,000



48 芳員 (YOSHIKAZU)  
 松に鶴  
 堅2枚続 嘉永頃 (c.1848)  
 刷良 保存良 上図極少虫穴  
 各約36.5x24.8cm. ¥90,000



57 国周 (KUNICHIKA)  
 開花人情鏡 秋雨  
 明治11年 (1878)  
 刷良 保存良 極少ヤケ  
 上縁極少傷  
 37.4x25cm. ¥25,000



58 国周 (KUNICHIKA)  
 見立屋夜廿四時之内 午前四時  
 明治23年 (1890)  
 刷良 保存良 極少シミ  
 37.5x25.2cm. ¥40,000



59 周延 (CHIKANOBU)  
 四季遊 春の部 3枚続 明治20年 (c.1887)  
 刷良 保存良 極少ヤケ 極所シミ 上折部テープ補修  
 各約36.1x25cm. ¥38,000





60 周延 (CHIKANOBU) 婦人諸礼式の図 屠蘇  
3枚続 明治28年(1895) 刷良 保存良 弱中折  
各約37.4x25cm. ¥40,000



61 周延 (CHIKANOBU) 徳川時代貴婦人の図(菖蒲)  
3枚続 明治30年頃(c.1897) 刷良 保存良 少シミ  
各約35.7x23.8cm. ¥28,000



62 周延 (CHIKANOBU) 千代田之大奥 元旦二度目の御飯  
3枚続 明治28年(1895) 刷並 保存良 少シミ 裏打  
各約35.5x24cm. ¥18,000



63 周延 (CHIKANOBU) 千代田之大奥 瀧見のお茶や  
3枚続 明治28年(1895) 刷並 保存良 極少シミ 裏打  
各約35.6x23.8cm. ¥22,000



64 周延 (CHIKANOBU) 千代田之大奥 おさざれ石  
3枚続 明治28年頃(c.1895) 刷並 保存良 少シミ 裏打  
各約35.5x23.8cm. ¥20,000



65 周延 (CHIKANOBU) 千代田之大奥 お流れ  
3枚続 明治28年(1895) 刷並 保存良 極少シミ 裏打  
各約35.5x24cm. ¥20,000



66 周延 (CHIKANOBU) 千代田之大奥 ほたる  
3枚続 明治28年頃(c.1895) 刷並 保存良 極少シミ 裏打  
各約35.5x24cm. ¥23,000



67 周延 (CHIKANOBU) 千代田之大奥 節分  
3枚続 明治29年(1896) 刷並 保存良 少シミ 裏打  
各約35.6x23.8cm. ¥18,000



68 周延 (CHIKANOBU) 千代田之大奥 狢のくるい  
3枚続 明治29年(1896) 刷並 保存良 極少シミ 裏打  
各約35.7x23.9cm. ¥22,000



69 周延 (CHIKANOBU) 千代田の大奥 お召しかえ  
3枚続 明治28年(1895) 刷並 保存良 少シミ 裏打  
各約35.7x23.9cm. ¥16,000





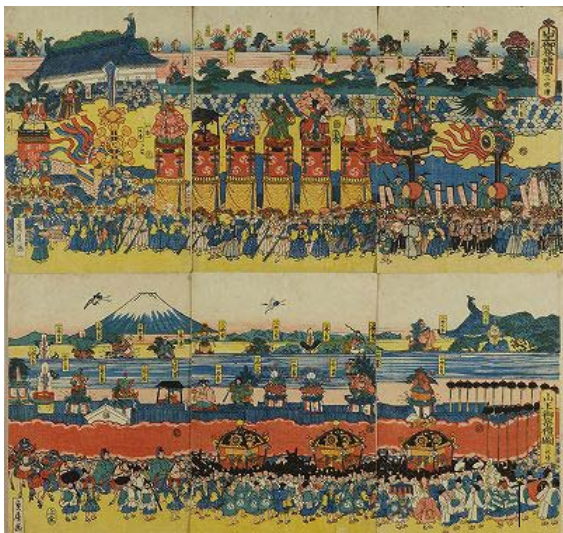
70 周延 (CHIKANOBU)  
千代田の大奥 御遊山 3枚続 明治28年頃 (c.1895)  
刷並 保存良 少シミ 裏打  
各約35.6x24cm. ¥18,000



72 春汀 (SHUNTEI)  
当世風俗通 歌留多合 3枚続 明治31年 (1898)  
刷良 保存良 極少汚 極少シミ  
各約37.5x25.2cm. ¥55,000



75  
昇雲 (SHOUN)  
今すがた 枝うつし  
明治40年 (1907)  
刷極良 保存良  
右縁極少ヤケ  
37x25cm.  
¥100,000



76 貞房 (SADAFUSA)  
山王御祭礼図 3枚続 2組 弘化頃 (c.1844)  
刷良 保存良 極少汚 各約25.5x18cm. ¥100,000



71 小国政 (KOKUNIMASA)  
日本三景の内 安芸宮嶋 3枚続 明治25年 (1892)  
刷良 保存良 左図極少シミ 縁極少汚  
各約37.3x25.5cm. ¥80,000



73 春汀 (SHUNTEI)  
美人十二ヶ月 其七 海水浴 3枚続 明治31年 (1898)  
刷良 保存良 縁極少虫穴  
各約37.5x25cm. ¥120,000



74 春汀 (SHUNTEI)  
美人十二ヶ月 其十 紅葉 3枚続 明治31年 (1898)  
刷良 保存良 極少汚  
各約37.3x25cm. ¥120,000



77 広重 (HIROSHIGE)  
木曾街道六拾九次之内 守山 天保頃 (c.1830)  
刷良 保存良 極少シミ 極少ヤケ 少虫穴補修 一部少薄み  
25.4x37.1cm. ¥80,000





78 広重 (HIROSHIGE)  
東海道五拾三次之内 日本橋 行烈振出  
天保4年頃 (c.1833)  
刷良 保存良 極少虫穴補修 左縁補修  
24x36.5cm. ¥550,000



79 広重 (HIROSHIGE)  
東海道五拾三次之内 吉原 左富士  
天保4年頃 (c.1833)  
刷良 保存良 極少汚 少虫穴及中折部補修  
24.5x37cm. ¥90,000



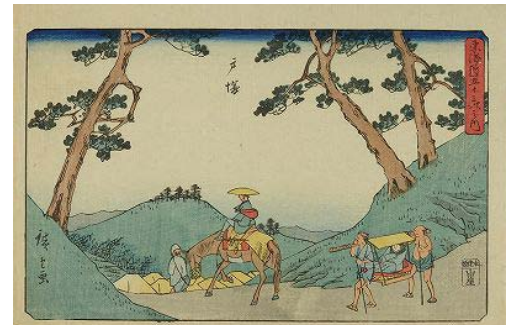
82 広重 (HIROSHIGE)  
五十三次名所図会 原  
阿したか山不二眺望 安政2年 (1855)  
刷極良 保存良 少虫穴補修  
37x24.8cm. ¥100,000



83 広重 (HIROSHIGE)  
五十三次名所図会 岡崎  
やはぎ川 やはぎの橋 安政2年 (1855)  
刷良 保存良 極少ヤケ  
36.4x24.8cm. ¥60,000



80 広重 (HIROSHIGE)  
東海道五拾三次之内 嶋田 大井川駿岸  
天保4年頃 (c.1833)  
刷良 保存良 極少汚 極少ヤケ  
弱中折 下縁少トリム 薄裏打  
24x36.9cm. ¥120,000



81 広重 (HIROSHIGE)  
行書東海道五十三次之内 戸塚  
天保12年頃 (c.1841)  
刷良 保存良  
22.5x34cm. ¥80,000



84



85



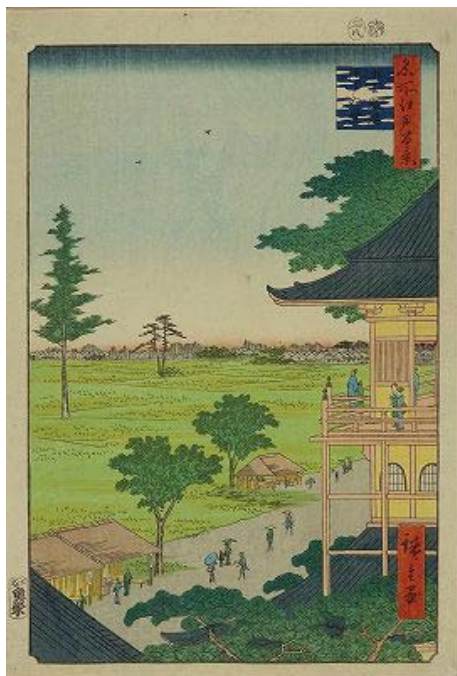
86

84 広重 (HIROSHIGE)  
東都名所 州崎海浜汐干狩之図 天保6年頃 (c.1835)  
刷良 保存良 極少汚 極少破補修  
38x12.8cm. ¥220,000

85 広重 (HIROSHIGE)  
東都名所 梅屋敷満花之図 天保6年頃 (c.1835)  
刷良 保存良 極少シミ  
37.9x12.6cm. ¥240,000

86 広重 (HIROSHIGE)  
東都名所 亀井戸池中藤花之盛 天保6年頃 (c.1835)  
刷良 保存良  
38x13cm. ¥250,000





87 広重 (HIROSHIGE)  
名所江戸百景 五百羅漢 さざみ堂  
安政3年 (1856)  
刷良 保存良  
36.5x24.8cm. ¥230,000



88 広重二代 (HIROSHIGE II)  
名所江戸百景 赤坂桐畑 雨中夕けい  
安政6年 (1859)  
刷極良 保存極良  
36.3x24.8cm. ¥1,500,000



89 広重 (HIROSHIGE)  
江戸名所 王子瀧乃川 山田屋版  
嘉永6年 (1853) 刷良 保存良  
25.5x37.6cm. ¥80,000

90~94 広重 (HIROSHIGE)  
浄るり町繁花の図  
嘉永5年 (1852)  
特記なき限り刷良 保存良  
各約37.5x25.5cm.



90 「昔語黄鳥墳」他  
極少汚 極少虫穴補修  
弱中折 ¥120,000



91 「由良湊千軒長者」他  
少虫穴補修 中折  
35.5x25.5cm. ¥110,000



92 「花上野鶯石碑」他  
極少シミ 少虫穴補修 中折  
¥110,000



93 「太平記忠臣講釈」他  
極少汚 少虫穴補修 中折  
¥120,000



94 浄るり町道外 「五大力」他  
極少汚 中折  
¥120,000



95・96 豊国三代・広重二代 他 (TOYOKUNI III / HIROSHIGE II / other)  
江戸の花名勝会 文久3年 (1863) 刷良 保存良 各約37x25cm.



95 茅場町植木店  
¥20,000



96 入谷の鬼子母神  
¥20,000



97 広重二代 (HIROSHIGE II)  
虎見世物図 万延元年 (1860)  
刷良 保存並 少汚 少退色  
少ヤケ 虫穴補修 中折 薄裏打  
36x24cm. ¥25,000



98 国員 (KUNIKAZU)  
紅毛渡り名鳥 慶応元年 (1865)  
刷良 保存良 少シミ 少傷  
少虫穴補修 中折 裏面墨書  
37.9x25.8cm. ¥45,000



100 貞秀 (SADAHIDE)  
横浜本町并二港崎町細見全図 3枚続 万延元年 (1860)  
刷良 保存良 中図少シミ 極少虫穴補修  
各約36x24cm. ¥80,000



99 芳豊 (YOSHITOYO)  
万延元年庚申年 来ル七月上旬より於西両国広小路  
奉御覧入候 虎嘯生風 龍吟起雲 万延元年 (1860)  
刷良 保存良 少虫穴 36x49.5cm. ¥30,000



102 立祥 (RISSHO)  
武陽横浜一覽 3枚続 慶応2年 (1866)  
刷良 保存良 極少汚  
各約37.5x25.6cm. ¥120,000



101 貞秀 (SADAHIDE)  
大日本国郡名所 下総国印旛郡 佐倉 明治元年 (1868)  
刷良 保存良 極少汚 極少シミ 少ヤケ  
25.3x33.8cm. ¥35,000



103 広重三代 (HIROSHIGE III)  
横浜海岸各国商館之図 3枚続 明治4年 (1871)  
刷良 保存極良 但下角ピン穴傷  
各約37x24.8cm. ¥130,000



104 長崎版画 (NAGASAKI SCHOOL)  
紅毛人と唐人  
刷良 保存並 汚 シミ 少虫穴補修  
22x24.8cm. ¥30,000



105 長崎版画 (NAGASAKI SCHOOL)  
阿蘭陀人 咬嚙吧果坊  
刷良 保存良 少ヤケ 左上破補修  
極少虫穴補修 30.5x15.1cm. ¥80,000





106  
長崎版画 (NAGASAKI SCHOOL)  
阿蘭陀人之図  
刷良 保存良  
極少汚 極少傷  
32.8x22.5cm. ¥200,000



107  
長崎版画 (NAGASAKI SCHOOL)  
阿蘭陀女人図  
刷良 保存良 少汚  
左上折 少虫穴補修  
36.3x16cm. ¥130,000



108 長崎版画 (NAGASAKI SCHOOL)  
阿蘭陀人図  
刷良 保存良 少汚 少ヤケ 弱中折  
31.7x21.8cm. ¥150,000



109 長崎版画 (NAGASAKI SCHOOL)  
長崎港図 刷良 保存並 汚 中折 裏打  
20.5x36.1cm. ¥80,000



110 無款 (UNSIGNED)  
新板子供遊万国尽  
安政6年 (1859)  
刷並 保存良  
35.8x24.3cm. ¥48,000



111

111~117 芳虎 (YOSHITORA)

111 武州横浜名所図 英吉利人 本村 万延元年 (1860)  
刷良 保存良 極少汚 極少虫穴補修 端折  
36x24.8cm. ¥35,000

112 五箇国之内 亜墨利加人 文久元年 (1861)  
刷並 保存良 極少汚 薄裏打  
36.5x24.5cm. ¥40,000

113 佛蘭西人 岩亀遊興 文久元年 (1861)  
刷並 保存並 少汚 少シミ 少虫穴補修 弱折  
36.6x25cm. ¥25,000

114 外国人遊行之図  
亜墨利加女人 文久元年 (1861)  
刷良 保存並 少汚  
少虫穴及傷補修  
35.5x23.4cm. ¥40,000

115 外国人物尽 英吉利  
文久元年 (1861) 刷並 保存良  
36.5x24.4cm. ¥45,000

116 万国人物内 英吉利  
亜墨利加 文久元年 (1861)  
刷良 保存良 極少汚  
少虫穴補修 中折  
35.4x25.4cm. ¥45,000

117 外国人物図画 魯西亞  
万延元年 (1860)  
刷良 保存並 少汚 少傷  
36x24.2cm. ¥35,000

118~119 芳盛 (YOSHIMORI)  
118 東都名所 王子 エギリス  
文久元年 (1861)  
刷良 保存良 縁少シミ  
37.1x24.8cm. ¥28,000

119 東都名所 不忍 アメリカ  
文久元年 (1861)  
刷良 保存良 少汚 少破補修  
36x23.4cm. ¥35,000



112



113



114



115



116



117



118



119





120 芳幾 (YOSHIKU)  
外国人物図画 佛蘭西 清人南京  
紅毛女人 英吉利 文久元年 (1861)  
刷良 保存良 少汚 少シミ 薄裏打  
35.4x24.5cm. ¥35,000



121 芳幾 (YOSHIKU)  
万国人物尽 天竺 蒙古  
女人国 大清 文久元年 (1861)  
刷良 保存良 極少汚  
35.5x24.5cm. ¥40,000



122 芳幾 (YOSHIKU)  
外国人物図画 英吉利  
文久元年 (1861)  
刷良 保存並 少汚 少傷補修  
35.9x24.5cm. ¥35,000



123 芳藤 (YOSHIFUJI)  
フランス人遊戯  
文久元年 (1861)  
刷良 保存良  
36.7x24.7cm. ¥60,000



124 芳員 (YOSHIKAZU)  
英吉利 文久2年 (1862)  
刷良 保存良  
37.2x25.2cm. ¥50,000



125 芳員 (YOSHIKAZU)  
五ヶ国之内 魯西亞人  
文久元年 (1861) 刷良  
保存良 少汚 少虫穴補修  
35.5x24.2cm. ¥35,000



126 芳員 (YOSHIKAZU)  
志ん板外国人 文久元年 (1861)  
刷良 保存良 縁少破補修  
少トリム 36.2x24.5cm. ¥35,000



127 よし久 (YOSHIHISA)  
新板子供遊 万国尽  
刷良 保存並 少汚  
少傷補修 折  
35.5x23.7cm. ¥28,000



128 中島千年 (NAKAJIMA CHITOSE)  
内地雑居未来のポンチ絵 3枚続  
明治32年 (1899)  
刷良 保存良 左図極少シミ 中折  
各約37.5x25.3cm. ¥260,000



129 国輝 (KUNITERU)  
御天祭 3枚続 明治4年 (1871)  
刷良 保存良 極少汚 極少シミ 極少ヤケ  
各約36.5x25.5cm. ¥28,000



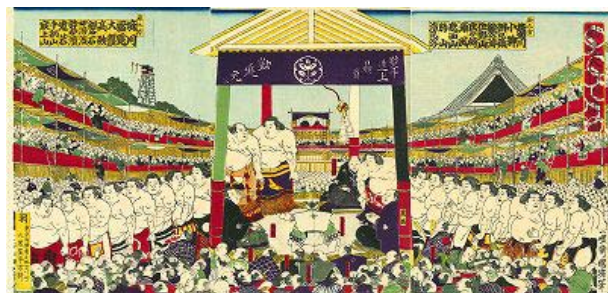
130 豊国四代 (TOYOKUNI IV)  
東京神田筋達目鑑橋創築繁栄之図 3枚続 明治6年 (1873)  
刷良 保存良  
各約36.8x24.9cm. ¥38,000



131 国輝二代 (KUNITERU II)  
芝増上寺黒本尊開帳之図 3枚続  
明治5年 (1872)  
刷良 保存良 中折  
各約37.3x25.1cm. ¥150,000



132 国輝 (KUNITERU)  
勸進大相撲土俵入之図 3枚続  
明治6年 (1873)  
刷良 保存良  
各約36.5x25.5cm. ¥35,000



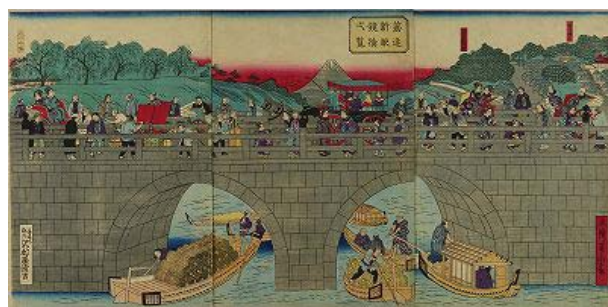
133 広重三代 (HIROSHIGE III)  
東京名所筋違萬代橋 3枚続 明治6年 (1873)  
刷良 保存良 中図中折  
各約36.8x25.5cm. ¥30,000



134 広重三代 (HIROSHIGE III)  
東京名勝筋違眼鏡橋之真景 3枚続 明治7年頃 (c.1874)  
刷良 保存良 極少シミ 極少ヤケ 極少虫穴  
各約36.5x24.8cm. ¥35,000



135 国政四代 (KUNIMASA IV)  
東京神田萬代橋繁栄之図 3枚続 明治7年頃 (c.1874)  
刷良 保存良 少汚 少シミ 少傷  
各約37x25cm. ¥35,000



136 芳虎 (YOSHITORA)  
筋違新眼鏡橋弔覧 3枚続 明治7年頃 (c.1874)  
刷良 保存良 極少汚 極少虫穴補修  
各約 35.7x24.8cm. ¥50,000



137 国松 (KUNIMATSU)  
第二回勸業博覧会図 3枚続 明治14年 (1881)  
刷良 保存良 極少虫穴 中図極少シミ  
各約36.3x24.8cm. ¥25,000



138 国利 (KUNITOSHI)  
御臨幸鳳凰御輦之図 3枚続 明治23年 (1890)  
刷良 保存良  
各約36.3x24cm. ¥15,000



139 広重三代 (HIROSHIGE III)

大日本物産図会 118枚揃 (うち初刷又は準初刷50図)

明治10年頃 (c.1877)

刷良 保存良 一部少汚 少シミ 少傷 中折 裏打

各約17.6x24.7cm. ¥2,500,000



千島国 海獺採之図



北海道〔渡島〕 函館氷輸出之図



陸奥 津軽昆布採之図



陸奥国 真綿製之図



羽後国 養蚕之図 七



羽後 秋田款冬之図



陸中国 養蚕之図 六



陸中国 牧牛之図



陸前国 養蚕 図 五



陸前国 松島景並埋木細工之図



岩代国 会津鰯実採ノ図



岩代国 蠶ヲ製ス図



磐城国 養蚕之図 四



磐城国 野馬捕之図



下野 足利辺高機之図



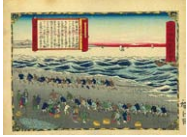
下野国 養蚕 図 三



常陸国 養蚕之図 一



常州 鯉ヲ抱取ル図



上総国 九十九里鰻漁之図



上総国 建干網之図



下総国 西瓜畑之図



下総国 醤油製造之図



安房国 水仙花



安房国 鰻網之図



武蔵国 浅草海苔製図



東京 錦絵製造之図



伊豆国 椿の油を取図



駿河国 炭焼場之図



駿河 半紙漉場ノ図



駿河国 竹細工製ノ図



甲斐国 白柿製之図



甲斐国 葡萄培養図



信州 蕎麦切製造之図



信濃国 水中ハツ目鰻採ノ図



越後国 雪中布晒之図



越後国 鮭州走を補図



佐渡国 金山之図



佐渡 金堀之図



越中国 鐵物細工之図



越中国 滑川大章魚之図



能登 素麵製造之図



能登国 鯖釣之図



加賀国 菅笠ヲ造ル図



加州 熊并二胆ヲ取ル図



越前国 奉書製紙之図



越前国 海胆取之図



若狭国 鰯を取図



若狭国 蒸鰯製造之図



美濃国 石灰山之図



美濃 石灰焼之図



飛騨国 養蚕之図 二



飛州 猪捕之図



尾州 名古屋扇折の図



尾張国 有松絞リ之図



三河国 名倉砥切出ノ図



三河国 漆取之図



伊賀国 磨砂



伊賀国 石灰山之図





伊勢国 鮑採之図



伊勢国 長鮑製之図



志摩国 五色砂ニテ盆石飾



志摩国 荒布刈之図



近江国 青花紙製図



近江国 浜蚊帳輸出図



山城国 宇治茶摘図 一



山城 宇治茶製之図 二



丹波国 燧石切出之図



丹波国 蜂蜜製之図



丹後国 鰯追網之図



丹後国 鰯磯場之図



大和国 葛ノ根ヲ掘図



大和国 葛之粉製図



紀伊国 蜜柑山畑之図



紀伊国 北港ヨリ輸出之図



河内国 木綿ヲ摘採ル図



河内 木綿織機之図



泉州 堺打物見世之図



和泉国 堺浦桜鯛并魚市之図



摂津国 伊丹酒造之図



摂津国 新酒荷出之図



淡路国 鯛ブリ網之図



淡路国 鯛網之図



播州姫路革店之図



播磨国 赤穂塩浜之図



但馬国 野鷺養之図



但馬国 柳駕籠



備前 岡山石筆製図



備前国 白魚漁之図



備後国 蘭ヲ植ル図



備後国 量表ヲ製図



安芸国 厳島楊枝鬻図



安芸国 牡蠣畜養之図



周防国 香茸製之図



周防国 岩茸採之図



阿波国 藍製之図 一



阿波国 藍玉製之図 二



讃岐国 白糖製造之図



讃岐国 三盆糖製造図



伊豫国 牛蒡掘之図



伊豫国 鷹捕之図



伊豫国 鶴鷹之図二



伊豫国 峯越鴨捕図



土佐国 鰯釣之図



土佐国 鰯節を製ス図



筑前国 鮭漁之図



筑前国 博多織之図



肥前 伊万里陶器造図一



肥前 伊万里陶器造図二



壱岐国 鯨漁之図



壱岐国 神楽棧にて引揚図



対馬国 海鼠取之図



對馬国 海鼠製之図



肥後国 田植之図



肥後国 刈場之図



日向国 樟腦製之図



日向 緑磐製之図



大隈国 煙草培養之図



大隈国 煙草葉製造之図

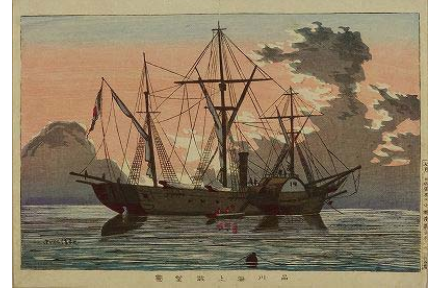




140 不忍池畔雨中 明治10年頃 (c.1877)  
極少汚 左端極少傷 左右トリム 中折  
23.5x33.2cm. ¥120,000



141 御茶の水堂 明治10年頃 (c.1877)  
縁極少汚 左右トリム 中折  
23.5x33.4cm. ¥120,000



142 品川海上眺望図 明治12年 (1879)  
縁極少汚 左右少トリム 中折  
23.3x33.2cm. ¥160,000



143 上野東照宮積雪之図 明治12年 (1879)  
縁極少汚 極少虫穴 左右少トリム 中折  
23.5x33.2cm. ¥140,000



144 湯島元聖堂之景 明治12年 (1879)  
極少退色 極少ヤケ 縁極少シミ  
23.1x35cm. ¥100,000



145 堀切花菖蒲 明治12年 (1879)  
縁極少汚 左縁少トリム 中折  
23.4x33.3cm. ¥80,000



146 東京両国百本杭暁之図 明治12年 (1879)  
縁極少汚 中折  
23.5x33.5cm. ¥160,000



147 高輪牛町隴月景 明治12年 (1879)  
縁極少汚 極少穴補修 左右少トリム 中折  
23.3x33.3cm. ¥160,000



148 大森朝乃海 明治13年 (1880)  
縁極少汚 左右少トリム 中折  
23.3x33.3cm. ¥140,000



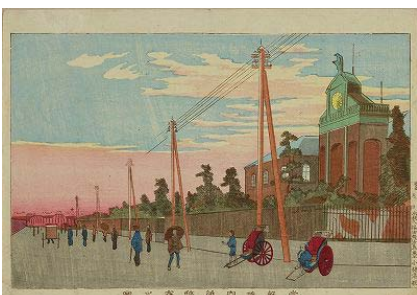
149 ミツ又永代橋遠景 明治13年 (1880)  
下縁極少虫穴補修  
34.5x36.4cm. ¥180,000



150 佃嶋雨晴 明治13年 (1880)  
少汚 少シワ 中折  
23.2x33cm. ¥100,000



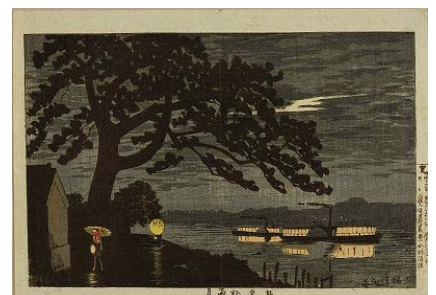
151 萬代橋朝日出 明治13年 (1880)  
縁極少汚 中折  
23.3x33.5cm. ¥100,000



152 常盤橋内紙幣寮之図 明治13年 (1880)  
刷良 保存良 縁極少汚 左右少トリム 中折  
23.3x33.3cm. ¥120,000



153 九段坂五月夜 明治13年 (1880)  
刷良 保存良 縁極少汚 左右少トリム 中折  
23.5x33.3cm. ¥140,000



154 五本松雨月 明治13年 (1880)  
刷良 保存良 縁極少汚 中折  
23.4x33.2cm. ¥160,000





156 浅草田圃太郎稲荷 明治14年頃 (c.1881)  
刷良 保存良 極少汚  
23x34.5cm. ¥200,000



155 五本松雨月 明治13年 (1880)  
少ヤケ 縁極少汚 蔵印  
23.6x35.3cm. ¥250,000



157 池の端花火 明治14年 (1881)  
縁極少汚 下縁極少虫穴補修 中折  
23.3x33.5cm. ¥140,000



158 隅田川夜 明治14年 (1881)  
縁極少汚 中折  
23.5x33.3cm. ¥120,000



159 今戸夏月 明治14年 (1881)  
極少汚 右下角極少補修 中折  
23.5x33.4cm. ¥120,000



160 亀井戸藤 明治14年 (1881)  
縁極少汚 極少傷補修 中折  
23.4x33.3cm. ¥80,000



161 日本橋夜 明治14年 (1881)  
縁極少汚 右下角極少傷修 中折  
23.3x33.5cm. ¥160,000



162 大傳馬町大丸 明治14年 (1881)  
縁極少汚 中折  
23.3x33.3cm. ¥80,000



166 清親 (KIYOCHIKA)  
日本名勝図会 江の島 明治29年 (1896)  
刷良 保存良 極少汚 極少シミ 中折  
36.5x24.5cm. ¥30,000



163 本所御蔵橋 明治14年頃 (c.1881)  
縁極少汚 中折  
23.5x33.3cm. ¥80,000



164 旧本丸雪晴 明治14年頃 (c.1881)  
極少汚 縁少トリム 中折  
23.4x33.3cm. ¥80,000

165 清親 (KIYOCHIKA)  
從箱根山中富嶽眺望  
明治13年 (1880)  
刷良 保存良 縁極少汚  
下縁少虫穴補修 中折 薄裏打  
23.4x33.3cm. ¥100,000







167 柳村 (RYUSON)  
向嶋八百松樓之図 明治14年 (1881)  
刷良 保存良 極少汚 縁少傷 中折  
23.5x33.5cm. ¥400,000



168 安治 (YASUJI)  
浅草橋夕景 明治14年頃 (c.1881)  
刷良 保存良 縁極少汚 右上極少シワ  
左右縁トリム 中折 23.5x33.4cm. ¥180,000



169 安治 (YASUJI)  
浅草橋雨中之景 明治14年 (1881)  
刷良 保存並 少汚 少傷 破及極少虫穴補修  
23.4x33.3cm. ¥180,000



170 安治 (YASUJI)  
蛸殻町川岸の図 明治14年 (1881)  
刷良 保存良 極少汚 極少虫穴及下縁傷補修  
左右トリム 中折 23.5x33.2cm. ¥180,000



171 安治 (YASUJI)  
枕橋の図 明治14年 (1881)  
刷良 保存良 少汚 少シミ 左右縁トリム 中折  
23.5x33.3cm. ¥100,000

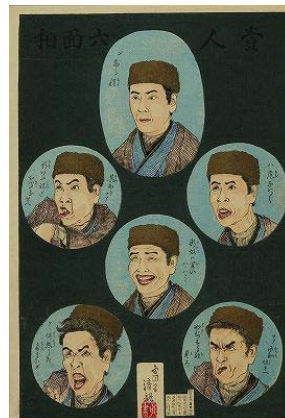
172～175 清親 (KIYOCHIKA) 壹人六面相 明治17年 (1884) 刷良 保存極良 各約36.5x25cm.



172 ¥40,000



173 ¥40,000



174 ¥40,000



175 ¥40,000



176～185 清親 (KIYOCHIKA) 清親ポンチ 明治14年頃 (c.1881) 各約35.5x23.5cm.



176 東京隅田川牛嶋  
刷良 保存並 少汚 少ヤケ  
少シミ 少傷補修 中折  
¥20,000



177 東京浅草観音  
刷良 保存並 少汚  
少ヤケ 少シミ 少傷補修  
¥18,000



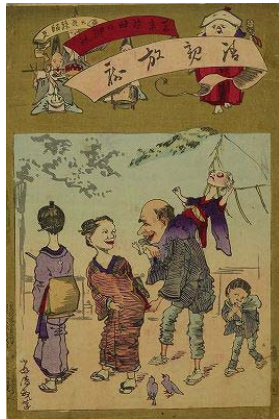
178 東京おうじ瀧の川  
刷良 保存並 少汚  
少ヤケ 少シミ 少傷補修  
35.4x23.5cm. ¥20,000



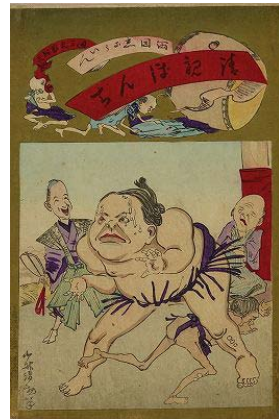
179 東京三十間堀  
刷良 保存並 少汚  
少ヤケ 少シミ 少傷補修  
¥18,000



180 東京新吉原  
刷良 保存並 少汚  
極少ヤケ 少傷補修  
弱中折 ¥20,000



181 東京神田の神社  
刷良 保存並 少汚 少ヤケ  
少シミ 少虫穴補修 中折  
¥20,000



182 両国えこういん  
刷良 保存並 少汚  
少ヤケ 少シミ 中折  
¥20,000



183 東京芳町  
刷良 保存並 少汚  
少ヤケ 少シミ 中折  
¥18,000



184 東京深川州崎  
刷良 保存良 極少汚 極少シミ  
極少ヤケ 極少虫穴 中折  
¥25,000



185 東京谷中天王池  
刷良 保存良 極少汚  
極少ヤケ 少塙傷補修 弱中折  
¥35,000

186 清親 (KIYOCHIKA)  
西京舞子嘉代  
大阪舞子一鶴  
東京芸妓小吉  
明治12年 (1879)  
刷良 保存良 中折  
36x24.7cm ¥150,000



187 清親 (KIYOCHIKA)  
四季のあそび内 秋のながめ 三きよく合  
3枚続 明治29年 (1896)  
刷良 保存良  
各約37.5x25.4cm. ¥150,000

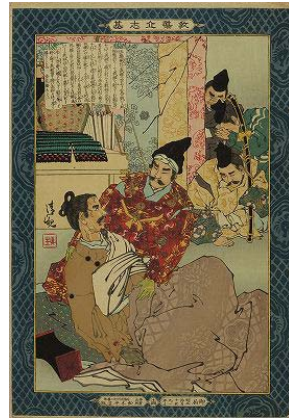




188～198  
**教導立志基**  
 明治18～20年 (1884-87)  
 特記なき限り刷良 保存良  
 各約37x25cm.



188 清親 (KIYOCHIKA)  
**袈裟御前**  
 刷極良 弱中折 ¥13,000



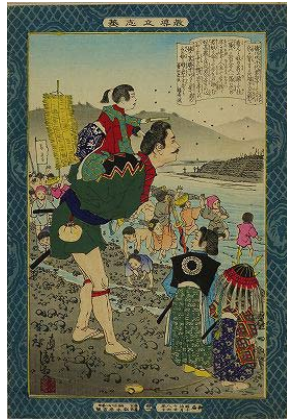
189 清親 (KIYOCHIKA)  
**佐藤嗣信**  
 刷極良 少ヤケ ¥13,000



190 清親 (KIYOCHIKA)  
**菊池武光**  
 極少汚 ¥15,000



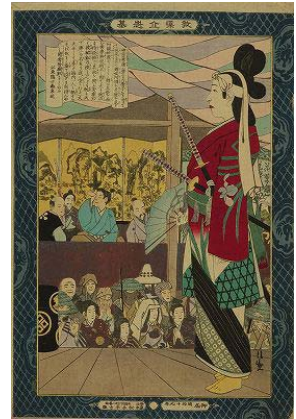
191 清親 (KIYOCHIKA)  
**上杉虎千代**  
 弱中折 ¥13,000



192 清親 (KIYOCHIKA)  
**徳川竹千代**  
 極少シミ ¥13,000



193 清親 (KIYOCHIKA)  
**織田信長** 極少汚  
 極少ヤケ 中折 ¥13,000



194 清親 (KIYOCHIKA)  
**豊臣秀康**  
 少ヤケ 極少シワ ¥13,000



195 年方 (TOSHIKATA)  
**農弥作**  
 極少ヤケ 極少シミ ¥13,000



196 清親 (KIYOCHIKA)  
**荻生徂徠** 極少シミ  
 極少ヤケ 中折 ¥13,000



197 清親 (KIYOCHIKA)  
**徳川慶喜公**  
 極少ヤケ 中折 ¥13,000



198 探景 (TANKEI)  
**佛女**  
 少ヤケ シミ ¥10,000



199 国政三代 (KUNIMASA III)  
**武田勝頼天目山にて木曾小笠原と戦う図** 3枚続 弘化頃 (c.1844)  
 刷良 保存良 極少虫穴 各約37.7x25.5cm. ¥60,000



200 芳勝 (YOSHIKATSU)  
**頼朝公富士之御狩図** 3枚続 弘化頃 (c.1844)  
 刷並 保存良 極少虫穴補修 中折 各約37.5x24.8cm. ¥38,000





201 貞秀 (SADAHIDE)  
鎌倉宮中両雄会戦智図 3枚続 嘉永頃 (c.1848)  
刷良 保存良 極少シミ  
各約37.5x25.6cm. ¥45,000



202 貞秀 (SADAHIDE)  
武田家勇将軍評定之図 3枚続 弘化頃 (c.1844)  
刷良 保存良 少傷  
各約37.5x25.8cm. ¥60,000



203 国綱 (KUNITSUNA)  
桶狭間ノ本陳稲川義元討死図 3枚続 慶応元年 (1865)  
刷極良 保存良 極少虫穴 弱中折  
各約37x25cm. ¥70,000



204 清親 (KIYOCHIKA)  
日本外史之内 鎮西八郎源為朝 3枚続 明治15年頃 (c.1882)  
刷良 保存良 中図極少シミ 端折 中図少傷補修  
各約37.5x25.5cm. ¥70,000



206 延一 (NOBUKAZU)  
児島備後三郎高德 3枚続 明治25年 (1892)  
刷良 保存良 角テープ跡  
各約37x24.5cm. ¥35,000



205 清親 (KIYOCHIKA)  
朝比奈勇力の図 3枚続 明治16年 (1883)  
刷良 保存良 中折  
各約37.2x25cm. ¥55,000



207 豊宣 (TOYONOBU)  
新撰太閤記 富士川ノ功名  
木下藤吉郎 伊東日向守  
2枚続 明治16年 (1883)  
刷良 保存良 極少虫穴 中折  
各約37.2x24.8cm. ¥18,000

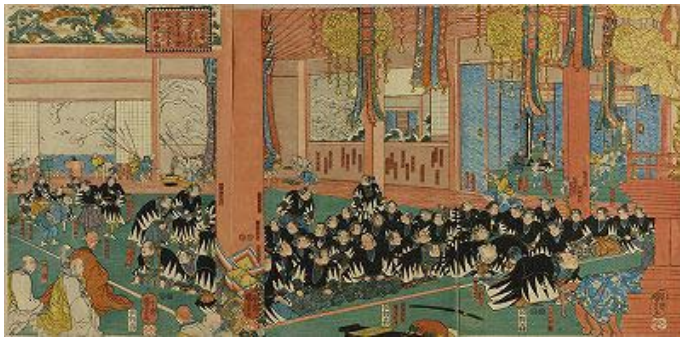


209 国芳 (KUNIYOSHI) 富士裾野曾我兄弟本望逐図 3枚続  
弘化頃 (c.1844) 刷良 保存良 弱中折 各約38x25.5cm. ¥150,000



208 国芳 (KUNIYOSHI)  
通俗水滸傳豪傑百八人之一個  
九紋龍史進 跳間虎陳達 天保頃 (c.1830)  
刷良 保存良 少退色 少汚 縁極少傷補修  
少トリム 36.3x25.7cm. ¥350,000





210 国芳 (KUNIYOSHI)  
大星良金ヲ始め四十余人の義士  
本意を達し万松山泉岳寺引取焼香図  
3枚続 嘉永頃 (c.1848)  
刷良 保存良 一部角少破補修  
各約38x25.9cm. ¥100,000



211 国芳 (KUNIYOSHI)  
誠忠義士肖像 大星由良助良雄  
嘉永5年 (1852)  
刷良 保存良 極少汚 角少破補修 少トリム  
36.2x24.2cm. ¥350,000



212 国芳 (KUNIYOSHI)  
誠忠義士肖像 杉野十平治次房 嘉永5年 (1852)  
刷良 保存良 極少汚 極少ヤケ  
37.6x25.5cm. ¥260,000



213 国芳 (KUNIYOSHI)  
誠忠義士肖像 矢頭與茂七教兼  
嘉永5年 (1852)  
刷良 保存良 極少汚 上部極少穴  
左下少虫穴 少トリム  
36.4x24.3cm. ¥230,000



214 国芳 (KUNIYOSHI)  
誠忠義士肖像  
箭田五郎左衛門助武  
嘉永5年 (1852)  
刷良 保存良 極少汚  
右下少虫穴 少トリム  
36.2x24.2cm. ¥230,000

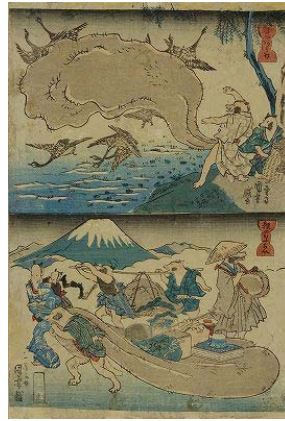




215



216



217

215 国芳 (KUNIYOSHI)  
あらためて狸のたわむれ  
弘化頃 (c.1844) 刷良 保存並  
汚 傷 折 破補修 薄裏打  
35.5x24cm. ¥60,000

216 国芳 (KUNIYOSHI)  
天狗のまね 地引たぬき  
弘化頃 (c.1844)  
刷良 保存並 汚 傷 折  
破補修 薄裏打  
35.5x24.2cm. ¥65,000

217 国芳 (KUNIYOSHI)  
狸のあみ打 狸のおうらい  
弘化頃 (c.1844)  
刷良 保存並 少汚 少傷  
虫穴補修 薄裏打  
38x25.8cm. ¥80,000



218 国芳 (KUNIYOSHI)  
東海道五十三対 由井  
弘化頃 (c.1844)  
刷良 保存良 上下トリム  
35.7x24.4cm. ¥55,000



219 国芳 (KUNIYOSHI) 見たて五行 火 かがり火 3枚続 嘉永頃 (c.1848)  
刷良 保存良 極少虫穴補修 弱中折 各約36x25.5cm. ¥430,000



220  
国芳 (KUNIYOSHI)  
おなじみ竹澤藤治  
改竹澤梅升両国  
広小路相勤申候  
嘉永頃 (c.1848)  
刷良 保存良 少汚  
少傷 極少シミ  
36.5x25cm. ¥38,000



221 芳年 (YOSHITOSHI) 義士姓氏録 明治元年 (1861)  
刷良 保存良 各約36.5x24.5cm. ¥260,000



222 芳年 (YOSHITOSHI) 艶雄六花撰 6枚続 明治12年 (1879)  
刷良 保存良 少汚 少シミ 極少虫穴補修 綴穴 少トリム 蔵印 各約35.8x24.2cm. ¥200,000





223 芳年 (YOSHITOSHI)  
藤原保昌月下弄笛図  
3枚続 明治16年 (1883)  
刷良 保存良 極少傷  
端折 右図切跡補修  
各約34.8x24cm. ¥1,800,000



224 芳年 (YOSHITOSHI)  
新形三十六怪撰 36枚揃+目次  
明治23・35年 (1890、1902)  
刷良 保存良 極少汚 少シミ  
少トリム 一部端折  
各約35.5x23.8cm. ¥2,500,000  
\*印が明治23年(1890) 佐々木豊吉版  
\* Published in 1890



\*

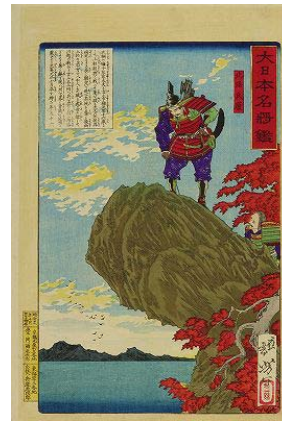




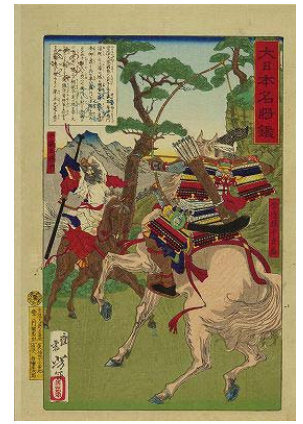
225 芳年 (YOSHITOSHI)  
月百姿 つきの発明 宝蔵院  
明治24年 (1891) 刷良 保存良  
極少シミ 角切 裏打  
36.6x24.5cm. ¥50,000



226 西塔武蔵坊弁慶  
御曹子牛若丸 ¥30,000



227 北条氏康  
右縁極少虫穴 ¥35,000



228 常陸掾平貞盛  
右縁極少虫穴 ¥35,000

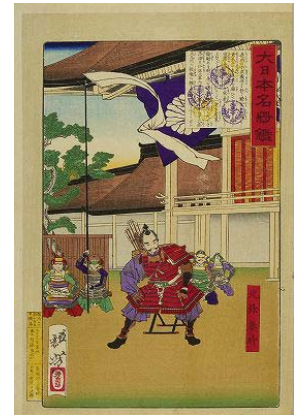
226~231 芳年 (YOSHITOSHI)  
大日本名将鑑  
明治11~12年 (1878-79)  
特記なき限り刷良 保存良 弱中折  
各約36x24cm.



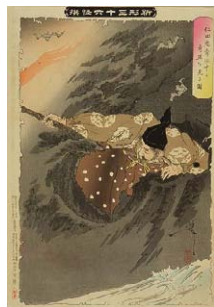
229 徳川家康公  
極少虫穴 ¥25,000



230 東山義政  
右縁極少虫穴 ¥25,000



231 北条泰時  
右縁極少虫穴 ¥25,000







232



233



234

232 国芳 (KUNIYOSHI)  
ほうらい拳 嘉永頃 (c.1848)  
刷良 保存良 少汚 少シワ  
少虫穴補修  
37.2x25.5cm. ¥50,000

233 国芳 (KUNIYOSHI)  
色真申歳春の寿ぎ お茶のこけん  
嘉永頃 (c.1848)  
刷良 保存並 汚 傷  
36.5x24.8cm. ¥40,000

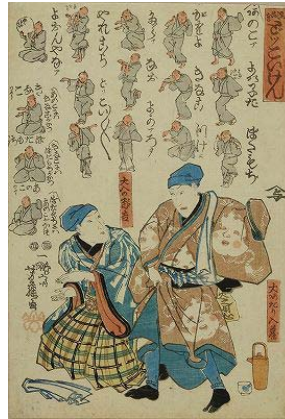
234 英泉 (EISEN)  
流行けんの唄 天保頃 (c.1830)  
刷良 保存良 少汚 少傷 中折  
36.3x24.6cm. ¥35,000



235



236



237

235 無款 (UNSIGNED)  
けんのけいこ 刷良 保存並  
汚 傷 少虫穴補修  
36.2x24.3cm. ¥30,000

236 芳藤 (YOSHIFUJI)  
かたい顔して縁むすび  
嘉永頃 (c.1848) 刷良 保存良  
極少汚 虫穴補修  
35.8x25.5cm. ¥35,000

237 芳藤 (YOSHIFUJI)  
流行どっこいけん  
嘉永頃 (c.1848)  
刷良 保存良 極少汚  
極少虫穴 少トリム  
36x25cm. ¥35,000



238



239

238 芳幾 (YOSHIIKU)  
はつうまけん  
文久元年 (1861)  
刷良 保存良 極少汚  
極少虫穴補修  
37x25.3cm. ¥35,000

239 陽斎 (YOSAI)  
とてつるけん  
明治7年 (1874)  
刷良 保存良 少汚  
少シミ 少傷 少ピン穴補修  
36.5x24.8cm. ¥18,000

240～242  
戊辰戦争風刺画



240 無款 (UNSIGNED)  
當り蘭講母子の寄合 2枚続  
慶応3年 (1867) 刷良 保存良 少汚  
少シミ 少傷 極少虫穴  
各約34.6x23.5cm. ¥15,000



241 無款 (UNSIGNED)  
徳川向め里物 2枚続 明治元年 (1868)  
刷良 保存良 少汚 小傷 少虫穴  
各約34.8x24cm. ¥15,000



242 無款 (UNSIGNED)  
友喧嘩 2枚続 慶応4年頃 (c.1868)  
刷良 並 少ヤケ 傷  
各約35.2x25cm. ¥12,000





243 無款 (UNSIGNED)  
一寸ートロ 千両幟乃語り分 2枚続  
慶応4年頃 (c.1868)  
刷良 保存良 少汚 少傷 少シミ 少虫穴  
各約36.6x25cm. ¥15,000



244 無款 (UNSIGNED)  
徳川奥羽屋 2枚続 慶応4年頃 (c.1868)  
刷良 保存良 少汚 少傷 少シミ 少虫穴  
各約35.3x24cm. ¥15,000



244 無款 (UNSIGNED)  
月見のたはむれ 2枚続 慶応4年 (1868)  
刷良 保存良 少虫穴 少トリム 薄裏打  
各約34.8x23.8cm. ¥20,000



246 無款 (UNSIGNED)  
三人なまえひ 2枚続 慶応4年 (1868)  
刷良 保存良 少ヤケ 少傷  
各約36.1x24.4cm. ¥15,000



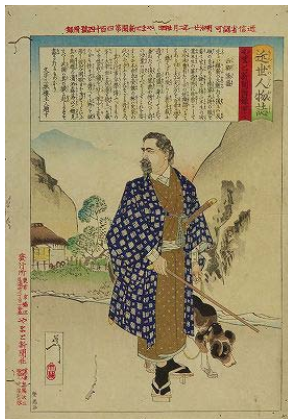
247 無款 (UNSIGNED)  
世の中のうらない 2枚続 慶応4年頃 (c.1868)  
刷良 保存良 少汚 緑少傷 少トリム  
各約35x23.3cm. ¥15,000



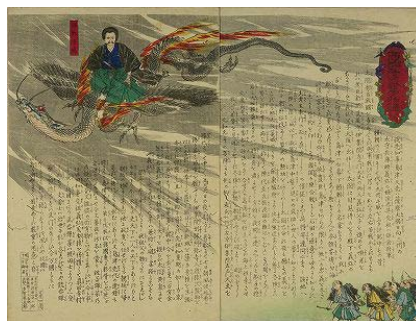
248 無款 (UNSIGNED)  
姫山姥 2枚続 慶応4年頃 (c.1868)  
刷良 保存良 少トリム 裏打  
各約35.2x24cm. ¥18,000

250 諸画家 (VARIOUS ARTISTS)  
西郷隆盛関係 6点11枚  
明治10・21年 (1877, 88)  
刷良 保存良 少汚 少傷  
一部少虫穴 中折  
各約36.3x25cm. ¥80,000

249 無款 (UNSIGNED)  
當世三筋のたのしみ 2枚続  
慶応4年 (1868) 刷良 保存良  
少汚 少シミ 少傷  
各約36.5x24.8cm. ¥15,000



近世人物誌 明治21年 (1888)



夢物語二号 中 2枚続 明治10年 (1877)



流行星の珍説 2枚続 明治10年 (1877)



夢物語 上 2枚続 明治10年 (1877)



夢物語 中 2枚続 明治10年 (1877)



夢物語 下 2枚続 明治10年 (1877)





251 豊国三代 (TOYOKUNI III)  
見立やみつし 夏の闇  
団七九郎兵衛 安政2年 (1855)  
刷良 保存良 右端極少虫穴  
35.5x24.4cm.  
¥200,000



252 芳虎 (YOSHITORA)  
江戸の花子供遊び 二番組  
す組 安政5年 (1858)  
刷良 保存良 極少汚  
極少シミ 少虫穴補修 折部傷  
35.5x24.5cm. ¥30,000



253 豊国三代 (TOYOKUNI III)  
三つ引きの長吉 市川市蔵  
万延元年 (1860) 刷良 保存良  
極少虫穴 薄裏打  
35x23.4cm. ¥50,000



254 豊国三代 (TOYOKUNI III)  
石尊大権現嶮路登山ノ図  
2枚続 万延元年 (1860)  
刷良 保存良 左図極少虫穴  
各約37.3x25.5cm.  
¥250,000



255 豊国三代 (TOYOKUNI III)  
立花の鶴吉 市村家橘  
文久元年 (1861)  
刷良 保存良 極少シミ  
37.5x26cm. ¥120,000



257 豊国三代 (TOYOKUNI III)  
見立十人豊国一世一代 屋久ら水滸伝 3枚続 文久3年 (1863)  
刷良 保存良 極少汚 極少シミ 少トリム  
各約36.3x24cm. ¥300,000



258 豊国三代 (TOYOKUNI III)  
大当大願成就有ヶ瀧壺 3枚続 文久3年 (1863)  
刷良 保存良 少汚 少傷補修 少トリム  
各約36.4x24.1cm. ¥250,000



256 豊国三代 (TOYOKUNI III)  
因果小僧六の助 市川市蔵  
文久元年 (1861)  
刷良 保存良  
37x25.5cm. ¥100,000





259 豊国三代 (TOYOKUNI III)  
見立六花撰 6枚続 文久3年 (1863)  
刷良 保存良 極少汚  
極少ヤケ 少虫穴補修  
各約36.5x25.5cm. ¥150,000



260 国周 (KUNICHIKA)  
「三題咄高座新作」  
竹門の虎松 市村羽左衛門  
文久2年 (1862)  
刷良 保存良 極少汚  
36.4x24.4cm. ¥150,000

261～263 国周 (KUNICHIKA) 当世五明人 元治元年 (1864)  
特記なき限り刷良 保存良 極少汚 各約35x24cm.



261 中村芝翫  
¥55,000



262 市村家橘  
¥55,000



263 坂東彦三郎  
少汚 中折 薄裏打 ¥45,000



264 国周 (KUNICHIKA)  
見立白浪八景 無縁寺の晩鐘  
湯湊場小僧吉三 沢村田之助  
慶応元年 (1865)  
刷良 保存良 極少汚 綴穴補修  
各約36.3x24.6cm. ¥80,000



265 国周 (KUNICHIKA) 「館扇曾我訥芝玉」 3枚続  
明治3年 (1870) 刷良 保存良 極少汚 少傷 極少虫穴  
折部補修 各約35.8x23.9cm. ¥25,000



266 国周 (KUNICHIKA) 見立若三人 3枚続  
慶応2年 (1866) 刷良 保存良 左図少シミ  
各約37x25cm. ¥100,000



267 国周 (KUNICHIKA) 解三升結柏 3枚続  
明治27年 (1894) 刷良 保存良 中図極少シミ 薄裏打  
各約36.8x25cm. ¥80,000



268 国周 (KUNICHIKA) 開化鳴海浴衣揃 3枚続  
明治7年 (1874) 刷良 保存良 極少シミ 少ヤケ  
各約37x25cm. ¥120,000





269 周延 (CHIKANOBU)  
**九紋龍 魯知深** 3枚続 明治19年 (1886)  
 刷良 保存良 左図下極少汚 薄裏打 少トリム  
 各約35.5x23.5cm. ¥150,000



270 銀光 (GINKO)  
**市川高麗蔵** 明治9年 (1876)  
 刷良 保存良 少虫穴補修 折  
 35.5x25cm. ¥45,000



271 鈴木華邨 (SUZUKI KASON)  
**「黒蜥蜴」** 文芸倶楽部1巻5号挿絵  
 広津柳浪著 明治28年5月 (1895/5)  
 刷良 保存良 22.5x28.5cm. ¥8,000



273 豊国 (TOYOKUNI)  
**三世尾上菊五郎**  
 文化頃 (c.1804)  
 刷良 保存良  
 極少虫穴補修 少トリム  
 38.5x26.3cm. ¥60,000



272 豊国 (TOYOKUNI)  
**なる神勝之介 澤村宗十郎** **三ヶつ地鶴之介 坂東三津五郎**  
 2枚続 文化8年 (1811)  
 刷良 保存良 右図少退色 少汚 下角少破補修  
 38.2x25.6cm. ¥350,000



274 国貞 (KUNISADA) **「仕入曾我雁金染」** 3枚続  
 文政3年 (1820) 正月 中村座  
 刷良 保存良 極少汚 少トリム 左図綴穴 各約35x25cm. ¥45,000



275 国貞 (KUNISADA) **假名手本忠臣蔵**  
 11枚揃 天保頃 (c.1830) 刷良 保存良  
 一部縁及角極少傷 五段目右下角少破  
 各約37.7x25.9cm. ¥190,000





277 国芳 (KUNIYOSHI)  
岩井半四郎追善絵  
天保7年 (1836)  
刷良 保存良 極少汚 折  
37.3x25.2cm. ¥13,000



279 芳鶴 (YOSHITSURU)  
子供遊躑梁塵図 弘化頃 (c.1844)  
刷良 保存良 少汚 縁極虫穴  
37.2x25cm. ¥20,000



283 豊国三代 (TOYOKUNI III)  
忠臣蔵八景 五段目の夜の雨  
文久3年頃 (c.1863)  
奉書刷 刷極良 保存良  
少虫穴 右下縁トリム  
36x24.8cm. ¥15,000



284 豊国三代 (TOYOKUNI III)  
豊国漫画図会 宮ノ原小太郎  
万延元年 (1860)  
刷良 保存良 薄裏打  
35.4x25cm. ¥35,000



276 国貞 (KUNISADA)「鎮西八郎降魔鎬」 5枚続 天保11年 (1840) 11月 市村座  
刷良 保存良 極少汚 綴穴 右図極少破穴 各約36.8x25.4cm. ¥180,000



278 豊国三代 (TOYOKUNI III) 五人男 5枚続 安政2年 (1855)  
刷良 保存良 一図極少虫穴 三図端折 各約36.5x26cm. ¥150,000

280～282 豊国三代 (TOYOKUNI III)  
豊国漫画三ッ組盃 文久元年 (1861)  
刷良 保存良 極少汚 縁極少傷  
各約37.5x26cm.



280 市川 ¥18,000



281 板東 ¥13,000



282 嵐 ¥13,000



285 豊国三代 (TOYOKUNI III)  
豊国揮毫奇術鏡 天狗小僧霧太郎  
文久元年 (1861)  
厚奉書刷 刷極良 保存良 綴穴  
36x25.9cm. ¥120,000



286 豊国三代 (TOYOKUNI III)  
四世市川新之助 長尾三郎景勝  
文久3年 (1863) 刷極良 保存良  
少退色 少ヤケ 下角及下縁少破補修  
37.2x25.3cm. ¥120,000





287 芳艶 (YOSHITSUYA) 俳優蛭狩 5枚続 文久2年 (1862)  
刷良 保存良 一部極少汚 各約36.5x25.4cm. ¥180,000



288 国明 (KUNIAKI)  
「助六所縁江戸桜」 3枚続 文久2年 (1862) 3月 市村座  
刷良 保存良 各約37.2x25.8cm. ¥23,000



289 国周 (KUNICHIKA)  
市川団十郎 坂本のさとへ出花や銘茶筒  
2枚続 明治4年頃 (c.1871)  
刷良 保存良 極少汚  
各約37x25.5cm. ¥35,000

290～293 国周 (KUNICHIKA) 善悪鬼人鏡 慶応4年 (1868)  
特記なき限り刷良 保存良 各約37x25cm.



290 石川五右衛門  
極少汚 極少シミ  
少虫穴補修 ¥18,000



291 南郷力丸  
少汚 少シミ 虫穴補修  
¥18,000



292 鬼神於松 極少シミ  
少虫穴及 傷補修  
左縁トリム ¥15,000



293 宇治常悦  
極少シミ 虫穴補修  
¥15,000



294 国周 (KUNICHIKA)  
大谷紫道 おみわ  
明治2年 (1869) 刷良  
保存良 極少虫穴 薄裏打  
35.8x24.3cm. ¥25,000



295 国周 (KUNICHIKA)  
入鹿大臣 大谷友右衛門  
明治2年 (1869) 刷良  
保存良 極少汚  
極少虫穴 薄裏打  
36x24.3cm. ¥35,000



296 国周 (KUNICHIKA)  
大谷紫道 おむら  
明治2年 (1869) 刷良  
保存良 極少汚  
極少虫穴 薄裏打 折  
35.8x24.2cm. ¥25,000



297 国周 (KUNICHIKA)  
歌舞伎三十六句 妻笠曾代次郎  
慶応元年 (1865)  
刷良 保存良 極少シミ 極少穴  
37.2x25cm. ¥12,000





298 国周 (KUNICHIKA) 俳優若手弁慶 3枚続  
明治2年 (1869) 刷良 保存良 少汚 少トリム 左図端折  
各約35x24cm. ¥20,000



299 国周 (KUNICHIKA) 「群見成恋情紀談」 3枚続  
明治3年 (1870) 10月守田座 刷良 保存良 極少シミ  
極少ヤケ 各約37.5x25.7cm. ¥25,000



300 国周 (KUNICHIKA) 「出来秋月光雪販」 3枚続  
明治4年 (1871) 8月 守田座 刷良 保存良  
各約36.5x25cm. ¥20,000



301 国周 (KUNICHIKA) 団七九郎兵衛 一寸徳兵衛  
団七女房お梶 3枚続 明治4年 (1871) 刷良 保存良  
各約36x24.8cm. ¥23,000



302 国周 (KUNICHIKA) 「連花席一大区繫」 3枚続  
明治8年 (1875) 刷良 保存良 極少汚 薄裏打 左図破補修  
各約35x24cm. ¥20,000



303 国周 (KUNICHIKA) 「雨催月笠森」 3枚続  
明治11年 (1878) 9月 都座 刷良 保存良 極少汚 極少虫穴  
各約37x25.2cm. ¥20,000



304 国周 (KUNICHIKA) 花競勇達引 3枚  
明治18年 (1885) 刷良 保存良 極少汚 右図極少シミ  
各約36.5x24.3cm. ¥25,000



305 国周 (KUNICHIKA) 「千歳曾我源氏礎」 3枚続  
明治18年 (1885) 2月 千歳座 刷良 保存良 薄裏打  
各約35.5x23.5cm. ¥24,000



306 国周 (KUNICHIKA) 新歌舞伎十八番之内 左小刀甚五郎  
おやま人形 3枚続 明治20年 (1887) 刷良 保存良  
各約37.2x24cm. ¥55,000



307 国周 (KUNICHIKA) 「籠釣瓶花街酔醒」 3枚続  
明治21年 (1888) 4月 千歳座 刷良 保存良  
左図極少シミ 薄裏打 各約36x23.6cm. ¥45,000





314 国梅 (KUNIUME)  
千代田城噂白浪 縦2枚続  
明治18年 (1885)  
刷良 保存良  
各約37.1x25cm.  
¥220,000



308 周重 (CHIKASHIGE) 首尾四谷色大山 3枚続  
明治13年 (1880) 6月 新富座 刷良 保存良  
極少汚 薄裏打 各約36.5x24cm. ¥70,000



310 国周 (KUNICHIKA) 慈眼寺山石段の月 3枚続  
明治22年 (1889) 刷良 保存良 極少汚 左図極少シミ  
各約37.1x24cm. ¥38,000



309 国周 (KUNICHIKA) 是は萬代の談柄 音聞浅間幻灯画  
3枚続 明治21年9月 (1888) 10月 中村座  
刷良 保存良 薄裏打 各約36x23.8cm. ¥120,000



311 国周 (KUNICHIKA) 俳優侠客伝 男達団四郎坊主三吉  
市川左団次 3枚続 明治27年 (1894) 3月 明治座  
刷良 保存良 極少虫穴 中図極少シミ 裏打  
各約35.5x23.8cm. ¥50,000



313 国周 (KUNICHIKA)  
板木 市川団十郎  
17.3x24.2cm. ¥180,000



312 国周 (KUNICHIKA) 一谷嫩軍記 3枚続  
明治25年 (1895) 3月 深野座 刷良 保存良 極少汚 中折  
各約37.3x26cm. ¥15,000



315 国政四代 (KUNIMASA IV)  
三府五港写幻灯 3枚続  
明治20年 (1887) 10月 新富座  
刷良 保存良 左図少シミ 裏打  
各約36.1x23.8cm. ¥65,000





316 香朝樓 (KOCHORO)  
歌舞伎座春狂言 曾我の対面 3枚続 明治25年 (1892)  
刷良 保存良 極少虫穴 中折  
各約37x24.8cm. ¥15,000



317 香朝樓 (KOCHORO)  
歌舞伎座新狂言 星月夜 鎌倉石段之場 3枚続  
明治26年 (1893) 刷良 保存良 少汚 少傷 左図極少シミ  
各約36.7x24.5cm. ¥12,000

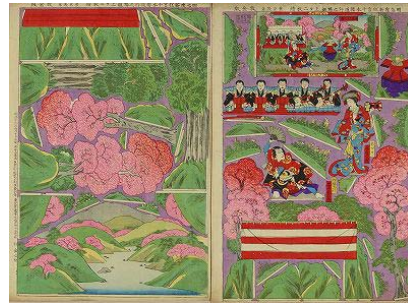


321 無款 (UNSIGNED)  
本朝廿四孝狐火の場 組上三枚続 3枚続  
明治35年 (1902) 刷良 保存良 縁極少汚  
各約36.5x24.5cm. ¥30,000



323 国政四代 (KUNIMASA IV)  
福島中佐単騎遠征 組上絵三枚続 3枚揃  
明治26年 (1893) 刷良 保存良 縁極少汚  
各約37.6x25cm. ¥40,000

324 無款 (UNSIGNED)  
体操組上絵 3枚揃  
明治初頃 (c.1880) 文部省製本所発行  
刷良 保存良 少汚 少シミ 少傷  
薄裏打 蔵印 各約35.5x25cm. ¥70,000



318 無款 (UNSIGNED)  
明治座新狂言 千本桜道  
行之場 組上ゲニ枚続  
2枚揃 明治29年 (1896)  
刷良 保存良  
各約36.5x24.8cm.  
¥25,000



319 無款 (UNSIGNED)  
歌舞伎座狂言小塚原地蔵前之場 三枚続組上 3枚揃  
明治26年 (1893) 刷良 保存良  
各約37.4x25.1cm. ¥30,000



320 無款 (UNSIGNED)  
地震加藤桃山 組上三枚 3枚揃  
明治29年 (1896) 刷良 保存良 縁極少汚  
各約37.2x25.2cm. ¥30,000



322 国政四代 (KUNIMASA IV)  
郡司海軍大尉端艇航海 組上三枚続 3枚揃  
明治26年 (1893) 刷良 保存良  
各約37.4x25.6cm. ¥40,000







325 年正 (TOSHIMASA)  
忠国文武揃 3枚続 明治10年 (1877)  
刷良 保存良 上部少シワ  
各約37.4x25.2cm. ¥35,000



326 周延 (CHIKANOBU)  
日本兵大勝利祝宴を開く図 3枚続 明治27年 (1894)  
刷良 保存良 中図極少穴 右図角欠  
各約37x25.3cm. ¥18,000



327 年方 (TOSHIKATA)  
海軍将校等征清の戦略を論する図 3枚続 明治27年 (1894)  
刷良 保存良 極少汚 極少シワ  
各約37x25.4cm. ¥28,000



328 清親 (KIYOCHIKA)  
成欽二於テ日清激戦我兵大勝図 3枚続 明治27年 (1894)  
刷良 保存良 左図極少穴  
各約37.2x25cm. ¥25,000



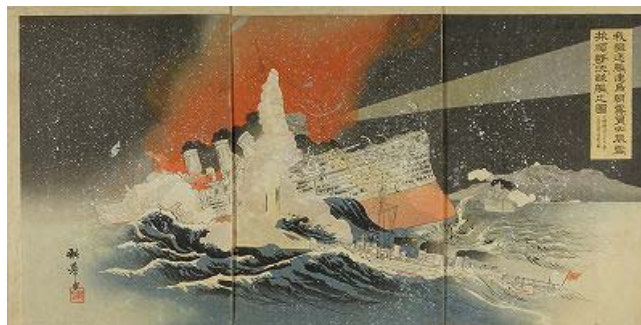
329 清親 (KIYOCHIKA)  
我軍隊牛莊城戦撮影之図 3枚続 明治27年 (1894)  
刷良 保存良  
各約36.5x24.7cm. ¥30,000



330 年章 (TOSHIKI)  
我第二軍威海衛砲台占領之図 3枚続 明治28年 (1895)  
刷良 保存良 右図極少シミ  
各約37x25cm. ¥20,000



331 清親 (KIYOCHIKA)  
陸海軍人高名鑑 浅川大尉  
二等騎兵 木村源松氏  
明治28年 (1895)  
刷良 保存良 縁少傷  
36x24.3cm. ¥20,000



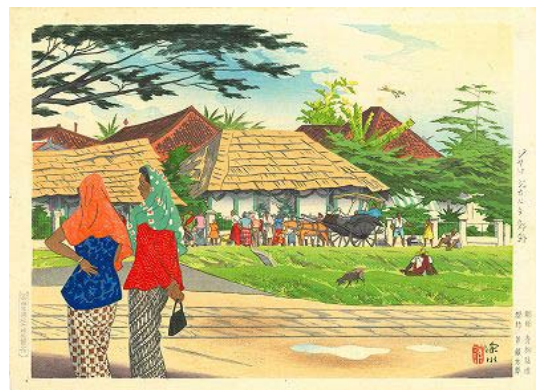
332 耕拳 (KOKYO)  
我駆逐艦速鳥朝霧冒大風雪旅順撃沈敵艦之図 3枚続  
明治37年 (1904) 刷良 保存良 極少ヤケ  
各約36.7x25.2cm. ¥38,000



333 清親 (KIYOCHIKA)  
日本萬歳 百撰百笑  
愚迂の音も電報  
明治37年 (1904)  
刷良 保存良  
37.2x25.5cm. ¥23,000



334 伊東深水 (ITO SHINSUI)  
雪の夜 大正14年 (1925)  
刷良 保存良 縁極少シミ  
36.9x25.7cm. ¥140,000



335 伊東深水 (ITO SHINSUI)  
ジャワ ジャカルタ郊外 昭和18年 (1943)  
刷良 保存良 縁極少シミ  
37.7x27.5cm. ¥100,000



336 小森素石 (KOMORI SOSEKI)  
金魚 昭和初期 (c.1926)  
刷良 保存極良  
39x21.8cm. ¥55,000



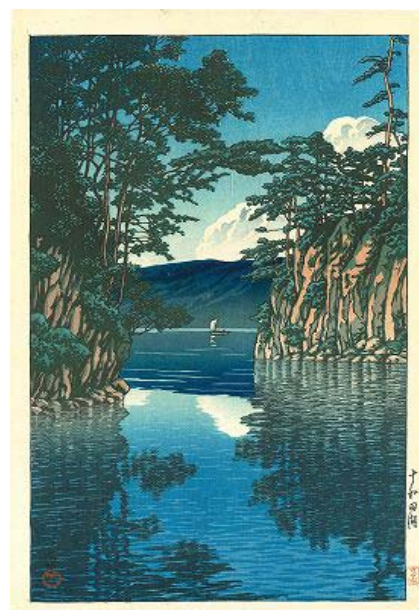
337 小早川清 (KOBAYAKAWA KIYOSHI)  
髪結 昭和5年 (1930)  
刷良 保存良 少ヤケ  
40.1x25.3cm. ¥90,000



338 小早川清 (KOBAYAKAWA KIYOSHI)  
湯上り 昭和8年頃 (c.1933)  
刷良 保存良  
40.8x25.8cm. ¥120,000

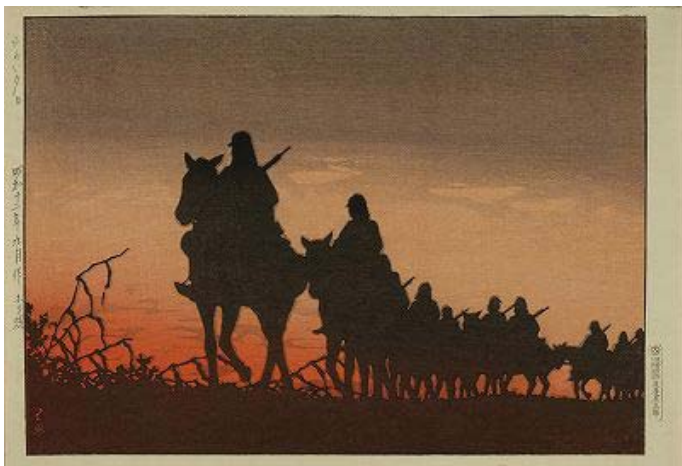


339 土屋光逸 (TSUCHIYA KOITSU)  
日光五重塔 昭和初期 (c.1930)  
刷良 保存良  
41.5x29cm. ¥200,000



340 川瀬巴水 (KAWASE HASUI)  
十和田湖 昭和2年頃 (c.1927)  
刷良 保存良  
38.8x26.5cm. ¥300,000

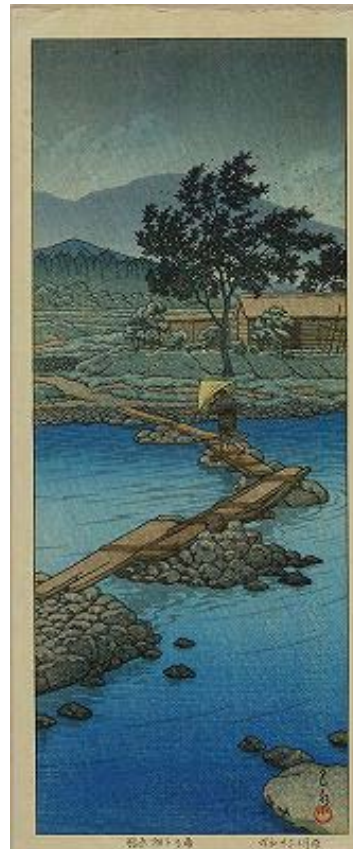




341 川瀬巴水 (KAWASE HASUI)  
あかい夕日 昭和12年 (1937)  
刷極良 保存極良  
24x34.8cm. ¥300,000



342 川瀬巴水 (KAWASE HASUI)  
かちどき 昭和12年 (1937)  
刷極良 保存良 極少退色 極少ヤケ  
24x33.8cm. ¥330,000



343 川瀬巴水 (KAWASE HASUI)  
塩原畑下乃雨 昭和30年 (1955)  
刷良 保存良  
48.5x20cm. ¥180,000



344 川瀬巴水 (KAWASE HASUI)  
上野東照宮 後刷 昭和4年 (1929)  
刷良 保存極良  
40x27.8cm. ¥150,000



345 川瀬巴水 (KAWASE HASUI)  
潮来の夕 後刷 昭和5年 (1930)  
刷良 保存極良  
42.4x30cm. ¥90,000



- 1 KUNISADA: Portrait of the actor Nakamura Shikan in the role of Shoki, from *Nakamura Shikan kyuhenge no uchi* (Nine roles of Nakamura Shikan)—Good impression, fair condition, slightly soiled and worn  
38x25.7cm. ¥50,000
- 2 YOSHITSUNA: *Hoso-e* (talisman to prevent smallpox), illustrating Shoki, c.1848—Good impression, fair condition, slightly soiled and worn, minor tear on lower left repaired with light backing, ownership seal  
31x21.8cm. ¥200,000
- 3 YOSHITSUNA: *Hoso-e* (talisman to prevent smallpox), illustrating Minamoto no Tametomo, c.1848—Good impression and condition, ownership seal, backed  
31x22.2cm. ¥230,000
- 4 YOSHITSUNA: *Hoso-e* (talisman to prevent smallpox), illustrating a mask for lion dance, c.1848—Good impression and condition, slightly soiled, ownership seal, backed  
31.5x22cm. ¥200,000
- 5 YOSHITSUNA: *Hoso-e* (talisman to prevent smallpox), illustrating a toy owl, c.1848—Good impression, fair condition, slightly soiled and worn, fold lines, backed  
31.8x19.7cm. ¥200,000
- 6 KUNICHIKA: Portrait of the actor Nakamura Shikan in the role of Shoki chasing demon of smallpox away, triptych, 1884—Good impressions, fair condition, slightly soiled and stained, some damage repairs  
35.3x25cm. each approx. ¥75,000
- 7 KIYOCHIKA: Shoki chasing demons away, ink and red color on silk, mounted as a hanging scroll, late 19c—Good condition  
118x41.5cm. ¥150,000
- 8 YOSHIMORI: Battle of favorable diet and to be avoided for measles, titled *Hashika nodoku gassen no zu*, triptych, 1859—Good impression, fine condition  
36x25.2cm. each approx. ¥300,000
- 9 YOSHIMORI: *Hashika byochu shokumotsu ben* (List of favorable diet during sickness of measles), 1862—Good impression and condition  
36.5x26cm. ¥120,000
- 10 YOSHIMORI: Shoki defeating God of Cholera, titled *Yakubyo yoke no kami* (God protecting from God of Plague), 1862—Good impression and condition  
35.8x25.5cm. ¥120,000
- 11 YOSHIFUJI: People suffered business loss beating God of Measles while doctor and pharmacist pacifying them, with a list of favorable diet, 1862—Good impressions and condition  
36.5x25.5cm. ¥130,000
- 12 YOSHIKU: *Sanki otoko hashika taiji* (Three braveries defeating Gods of Measles), diptych, 1862—Good impression and condition, lightly backed  
35.6x24.5cm. each approx. ¥150,000
- 13 YOSHIKU: Portrait of actor Sawamura Tanosuke in the role of Sirai Gompachi and Actor Kwarazaki Gonjuro in the role of Banzuini Chobei, slaying demon of measles, diptych, 1862—Good impressions and condition, very slightly stained  
35x25.5cm. each approx. ¥180,000
- 14 YOSHIKU: List of favorable diet and to be avoided for measles, titled *Hashika yojo gusa* (Remedy for measles), 1862—Good impression and condition  
35.8x25cm. ¥120,000
- 15 YOSHITOSHI: God of Izumo Province, Susano no Mikoto, protecting from measles, 1862—Good impression, fair condition, toned, pencil scribble  
36.6x25cm. ¥40,000
- 16 YOSHIMUNE: Bout between God of Measles and Smallpox, titled *Hashika no yojo* (Remedy for measles), 1862—Good impression and condition, some minor wormholes repaired  
35.5x24.8cm. ¥100,000
- 17 YOSHITORA: List of favorable diet and to be avoided for measles, titled *Hashika yojo no den* (Remedy for measles), 1862—Good impression and condition  
35.8x24.8cm. ¥120,000
- 18 UNSIGNED: Battle between measles and foods be avoided, triptych, 1862—Good impressions, fine condition  
36.2x25.5cm. each approx. ¥1,200,000
- 19 HIROSHIGE II: Hashika chudoku gassen (Battle between favorable foods and to be avoided for measles), diptych, 1862—Good impressions and condition  
35.5x24.5cm. each approx. ¥250,000
- 20 YOSHITSUYA: Shoki chasing God of Measles away, titled *Hashika yakubyo yoke* (Preventing God of Measles), 1862—Good impression, fine condition  
35.9x25.3cm. ¥150,000
- 21 YOSHITSUYA: *Hashika majinai oshie takara* (Charms for measles), 1862—Good impression and condition, slightly trimmed  
33.8x25.2cm. ¥100,000
- 22 RYOKO: *Hashika majinai* (Talisman for measles), 1862—Good impression and condition  
35.9x25cm. ¥140,000
- 23 KUNITOSHI: Mother covering her baby's head with a rice pot to reduce sickness, 1885—Good impression and condition  
37.3x25.2cm. ¥120,000
- 24 KUNITOSHI: Process of pregnancy, diptych, 1881—Good impressions and condition, very slightly soiled and stained, slightly worn, some minute wormholes repaired  
36.4x24.2cm. each approx. ¥85,000
- 25 UNSIGNED: *Fubo no on o shiru zu* (knowing obligation to parents), triptych, 1880—Good impressions and condition, right panel some minor wormholes repaired  
37.1x24.8cm. each approx. ¥150,000
- 26 UNSIGNED: Standing Jurojin with a stag, printed in ink with hand-applied colors—Good impression, fair condition, toned and worn  
67.7x28.5cm. ¥35,000
- 27 UNSIGNED: Standing Jurojin with a stag, printed in ink with hand-applied colors—Good impression, fair condition, toned and worn, slightly stained, some minor wormholes  
56.8x26cm. ¥25,000
- 28 KORYUSAI: No. 9, from the erotic set *Shikido tokkumi juniban* (Twelve erotic matches), c.1780—Good impression and condition, a few mirrored wormholes, slight damage along right edge, fold lines  
25.3x38.7cm. ¥180,000
- 29 EISEN: An erotic picture of a couple—Good impression and condition  
18.3x25.8cm. ¥40,000
- 30 EIZAN: Twelve month of little treasures, c.1818—Good impression and condition, slightly soiled, some damage and a few minute wormholes repaired  
36x26.2cm. ¥130,000
- 31 EIZAN: Gompachi and Komurasaki, c.1804—Good impressions and condition, paper partly thinned  
59x10cm. overall ¥85,000
- 32 EISEN: Beauty carrying a *shamisen* case ascending stair, vertical diptych, c.1818—Good impressions and condition, very slightly soiled, lower left corner on lower panel paper thin  
36.5x24.8cm. each approx. ¥150,000
- 33 EISEN: Standing beauty in snow holding an umbrella, vertical diptych, c.1830—Good impressions and condition, very slightly toned, faint diagonal fold on lower panel  
37.5x24.8cm. each approx. ¥280,000
- 34 EISEN: A standing beauty, with a hairpin decorated with coral, vertical diptych, c.1829—Good impressions and condition, slightly toned  
35.5x24.5cm. each approx. ¥95,000
- 35 TOYOKUNI III: Mother arranging child's hair, titled *Atsuraezome imayo gonomi* (Fashionable dyed cloth made to an order), mounted as a hanging scroll, 1844—Good impression and condition, slightly toned and creased, very slightly stained  
69x23cm. overall ¥45,000



- 36 YOSHITORA: Standing courtesan in a robe patterned with carp and peony, mounted as hanging scroll, 1859--Good impressions and condition, very slightly toned, trimmed 71.5x24.1cm. ¥75,000
- 37 SADAHIDE: Portrait of the courtesan Sugaoka of Okadaya, c.1830--Good impression and condition 37.8x25.7cm. ¥38,000
- 38 KUNIMARU: Celebrated courtesans of Gishsharo, Furuichi, Ise Province, c.1803--Good impression and condition 39x26.4cm. ¥350,000
- 39 KUNISADA: Standing beauty before *nadeshiko* (fringed pink), from *Bijin awase* (Collection of beauties), c.1830--Good impression and condition, slightly soiled and toned, minor wormholes repaired 37x25cm. ¥80,000
- 40 KUNISADA: Courtesan in an elaborately decorated robe with a crayfish, c.1830--Good impression and condition, slightly soiled, minor corner tears repaired 38.2x26cm. ¥58,000
- 41 TOYOKUNI III: Beauty reading a book under lighting up a lantern, titled *Arigataki miyo no kage-e* (Shadow pictures of a benevolent Reign), c.1844--Good impression and condition 36x24.5cm. ¥120,000
- 42 TOYOKUNI III: *Mizunoe* (Water), from *Jikkan eto no uchi* (Ten celestial stems), c.1844--Good impression and condition, very slightly soiled 37.4x26cm. ¥28,000
- 43 TOYOKUNI III: Beauties viewing plum blossom, triptych, 1854--Good impressions and condition, some minor wormholes repaired 37x25.4cm. each approx. ¥180,000
- 44 TOYOKUNI III: Genji and beauties in an interior, triptych, c.1848--Good impression, fine condition 37.1x25.8cm. each approx. ¥45,000
- 45 TOYOKUNI III: *Mitate Genji hana no utage* (Parody of the Tale of Genji, Party with cherry blossom), triptych, 1855--Good impressions and condition, very slightly soiled and stained, horizontal crease in the center 37.5x25.4cm. each approx. ¥50,000
- 46 FUSATANE: Genji on a terrace room overlooking a pond with iris, triptych, 1862--Good impression, fine condition 37x25cm. each approx. ¥60,000
- 47 TOYOKUNI III: *Unagi zuki* (Eel lover), from *Nijushiko imayo bijin* (Modern beauties and twenty-four lovers), 1863--Good impression and condition 35x24.9cm. ¥70,000
- 48 YOSHIKAZU: Cranes perched on a pine tree, vertical diptych, c.1848--Good impressions and condition, a pinhole worming on upper panel repaired 36.5x24.8cm. each approx. ¥90,000
- 49 GYOZAN: Canary, butterfly, jewelweed, and other autumn flowers, from *Kusaki kacho zue* (Pictures of birds and flowers), 1878--Good impression and condition, a stain on left 37.7x25.8cm. ¥10,000
- 50 GYOZAN: Sparrow, butterfly, and peony, from the same series as above, 1878--Good impression and condition 37.3x25.8cm. ¥12,000
- 51 GYOZAN: Sparrow and silk tree, from the same series as above, 1878--Good impression and condition, stain on left 37.5x25.7cm. ¥10,000
- 52 GYOZAN: Long tailed bird, swallow, and cherry blossom, from the same series as above, 1878--Good impression and condition 36.5x25cm. ¥15,000
- 53 GYOZAN: Geese, *ominaeshi*, *oikyo*, *oagi*, from the same series as above, 1878--Good impression and condition 38x25.5cm. ¥18,000
- 54 GYOZAN: Parakeet, *wataboshidori*, pomegranate, *murasakihiwa*, from the same series as above, 1878--Good impression and condition, very slightly stained 38x25.5cm. ¥12,000
- 55 GYOZAN: Shrike, kite, nandina, narcissus, and winter chrysanthemum, from the same series as above, 1878--Good impression and condition 37.7x25cm. ¥12,000
- 56 GYOZAN: *Uguisu*, *ginezumi*, plum, and rose, from the same series as above, 1878--Good impression and condition 37.5x25.5cm. ¥15,000
- 57 KUNICHIKA: *Akisame* (autumn rain), from *Kaika ninjo kagami* (Mirror of humanity in the civilization), 1878--Good impression and condition, very slightly toned, very slightly damage in upper margin 37.4x25cm. ¥25,000
- 58 KUNICHIKA: A courtesan taking off her name plate, 4am, from *Mitate chuya nijushi toki* (Parody of day and night in twenty-four hours), 1890--Good impression and condition, very slightly stained 37.5x25.2cm. ¥40,000
- 59 CHIKANOBU: Beauties under cherry blossom, titled *Haru no bu* (Spring), from *Shiki asobi* (Pleasure of four seasons), triptych, c.1887--Good impressions and condition, very slightly toned and stained, split along upper edge repaired with tape 36.1x25cm. each approx. ¥38,000
- 60 CHIKANOBU: *Toso* (New Year's spiced sake), from *Fujin shoreishiki no zu* (Female accomplishments), triptych, 1895--Good impressions and condition, faint centerfold 37.4x25cm. each approx. ¥40,000
- 61 CHIKANOBU: Beauties in an iris garden, from *Tokugawa jidai kifujin no zu* (Noble ladies of Tokugawa era), triptych, c.1897--Good impressions and condition, slightly stained 35.7x23.8cm. each approx. ¥28,000
- 62 CHIKANOBU: *Gantan nidome no gohan* (Second meal on the New Year's Day), from *Caiyoda no o-oku* (Inner palace of Edo Castle), triptych, 1895--Fair impressions, good condition, slightly stained, backed 35.5x24cm. each approx. ¥18,000
- 63 CHIKANOBU: *Takimi no ochaya* (Waterfall viewing teahouse), from the same series as above, triptych, 1895--Fair impressions, good condition, very slightly stained, backed 35.6x23.8cm. each approx. ¥22,000
- 64 CHIKANOBU: Ceremony of *Osazare ishi*, from the same series as above, triptych, c.1895--Fair impressions, good condition, slightly stained, backed 35.5x23.8cm. each approx. ¥20,000
- 65 CHIKANOBU: *Onagare*, from the same series as above, triptych, 1895--Fair impressions, good condition, very slightly stained, backed 35.5x24cm. each approx. ¥20,000
- 66 CHIKANOBU: *Hotaru* (Fireflies), from the same series as above, triptych, c.1895--Fair impressions, good condition, very slightly stained, backed 35.5x24cm. each approx. ¥23,000
- 67 CHIKANOBU: *Setsubun* (The day before first day of spring), from the same series as above, triptych, 1896--Fair impressions, good condition, slightly stained, backed 35.6x23.8cm. each approx. ¥18,000
- 68 CHIKANOBU: *Inu no kurui* (Excited gods), from the same series as above, triptych, 1896--Fair impressions, good condition, very slightly stained, backed 35.7x23.9cm. each approx. ¥22,000
- 69 CHIKANOBU: *Omeshikae* (change of clothes), from the same series as above, triptych, 1895--Fair impressions, good condition, slightly stained, backed 35.7x23.9cm. each approx. ¥16,000
- 70 CHIKANOBU: *Goyusan* (Excursion), from the same series as above, triptych, c.1895--Fair impressions, good condition, slightly stained, backed 35.6x24cm. each approx. ¥18,000
- 71 KOKUNIMASA: Itsukushima Shrine, Miyajima, Aki Province, from *Nihon sankei no uchi* (Three famous views of Japan), 1892--Good impressions and condition, a few spot stains on left panel, some margins very slightly soiled 37.3x25.5cm. each approx. ¥80,000



- 72 SHUNTEI: *Karuta awase* (Playing cards), from *Tosei fuzoku tsu* (Daily life of the day), triptych, 1898--Good impressions and condition, very slightly soiled and stained  
37.5x25.2cm. each approx. ¥55,000
- 73 SHUNTEI: Sea bathing, seventh month, from *Bijin junikagetsu* (Beauties in twelve months), triptych, 1898--Good impressions and condition, a few minute wormholes in some margins  
37.5x25cm. each approx. ¥120,000
- 74 SHUNTEI: *Momiji* (Autumn leaves), tenth month, from the same series as above, triptych, 1898--Good impressions and condition, very slightly soiled  
37.3x25cm. each approx. ¥120,000
- 75 SHOUN: *Eda utsushi* (Releasing insect to bush), from Ima sugata (Modern looking), 1907--Fine impression, good condition, very slightly toned along right edge  
37x25cm. ¥100,000
- 76 SADAFUSA: View of Sanno Festival, two triptychs, c.1844--Good impressions and condition, very slightly soiled  
25.5x18cm. each approx. ¥100,000
- 77 HIROSHIGE: Moriyama, from *Kisokaido rokujukyu tsugi* (the Sixty-nine stations of the Kisokaido), c.1830--Good impression and condition, very slightly stained and toned, some minor wormholes repaired, paper partly thinned  
25.4x37.1cm. ¥80,000
- 78 HIROSHIGE: Nihonbashi, subtitled *Gyoretsu furidashi* (Departing procession), from *Tokaido gojusan tsugi no uchi* (the fifty-three stations of the Tokaido), c.1833--Good impression and condition, a few minute wormholes repaired, left remargined  
24x36.5cm. ¥550,000
- 79 HIROSHIGE: Yoshiwara, subtitled *Hidari Fuji* (Mount Fuji seen on left), from the same series as above, c.1833--Good impression and condition, very slightly soiled, some minor wormholes and centerfold repaired  
24.5x37cm. ¥90,000
- 80 HIROSHIGE: Shimada, subtitled *Oigawa Sungan* (Suruga Bank of Oi River), from the same series as above, c.1833--Good impression and condition, very slightly soiled and toned, faint centerfold, lower margin narrow, lightly backed  
24x36.9cm. ¥120,000
- 81 HIROSHIGE: Totsuka, from *Tokaido gojusan tsugi no uchi* (the Fifty-three stations of the Tokaido), (the 'Gyosho' Tokaido), c.1841--Good impression and condition  
22.5x34cm. ¥80,000
- 82 HIROSHIGE: Hara, from *Gojusan tsugi meisho zue* (Pictures of famous places of the fifty-three stations), (the 'Upright' Tokaido), 1855--Fine impression, good condition, some wormholes repaired  
37x24.8cm. ¥100,000
- 83 HIROSHIGE: Okazaki, from the same series as above, 1855--Good impression and condition, very slightly toned  
36.4x24.8cm. ¥60,000
- 84 HIROSHIGE: *Susaki kaigan shiohigari no zu* (View of clam digging at Susaki), from *Toto meisho* (Famous places of the eastern capital), c.1835--Good impression and condition, very slightly soiled, a tiny tear repaired  
38x12.8cm. ¥220,000
- 85 HIROSHIGE: *Umeyashiki manka no zu* (View of full bloom at plum garden), from the same series as above, c.1835--Good impression and condition, very slightly stained  
37.9x12.6cm. ¥240,000
- 86 HIROSHIGE: *Kameido ike naka Fujibana no sakari* (Prosperity of the wisteria in the pond of Kameido), from the same series as above, c.1835--Good impression and condition  
38x13cm. ¥250,000
- 87 HIROSHIGE: Sazai Hall, Gohyaku rakan Temple, from *Meisho Edo hyakkei* (One hundred views of famous places of Edo), 1856--Good impression and condition  
36.5x24.8cm. ¥230,000
- 88 HIROSHIGE II: *Akasaka Kiribata* (Paulownia plantation at Akasaka), from the same series as above, 1859--Fine impression and condition  
36.3x24.8cm. ¥1,500,000
- 89 HIROSHIGE: Takinogawa, Oji, from *Edo meisho* (Famous places of Edo), 1853--Good impression and condition  
25.5x37.6cm. ¥80,000
- 90 HIROSHIGE: A sheet from *Joruricho hanka no zu* (Prosperity of Joruri street), 1852--Good impression and condition, very slightly soiled, a few minor wormholes repaired, faint centerfold  
37.2x25.6cm. ¥120,000
- 91 HIROSHIGE: A sheet from the same series as above, 1852--Good impression and condition, some minor wormholes repaired, centerfold  
35.5x25.5cm. ¥110,000
- 92 HIROSHIGE: A sheet from the same series as above, 1852--Good impression and condition, very slightly stained, a minor wormhole repaired, centerfold  
37.5x25.6cm. ¥110,000
- 93 HIROSHIGE: A sheet from the same series as above, 1852--Good impression and condition, very slightly soiled, a few minor wormholes repaired, centerfold  
37.4x25.8cm. ¥120,000
- 94 HIROSHIGE: A supplement from the same series as above, titled *Joruricho doge* (Supplement of Joruri street), 1852--Good impression and condition, very slightly soiled, centerfold  
37.5x25.3cm. ¥120,000
- 95 TOYOKUNI III / HIROSHIGE II / KUNIHISA: *Kayabacho*, from *Edo no hana meisho-e* (Pictures of famous views and flamboyance of Edo), 1863--Good impression and condition  
37x25.2cm. ¥20,000
- 96 TOYOKUNI III / HIROSHIGE II / SADAHIDE: Iriya, from the same series as above, 1863--Good impression and condition  
36.5x24.8cm. ¥20,000
- 97 HIROSHIGE II: Figures related to tiger, viewing a tiger in a cage, 1860--Good impression, fair condition, slightly soiled, stained, and toned, wormholes repaired, centerfold, lightly backed  
36x24cm. ¥25,000
- 98 KUNIKAZU: Birds from the west, 1865--Good impression and condition, slightly stained and worn, some wormholes repaired, centerfold, ink inscriptions on verso  
37.9x25.8cm. ¥45,000
- 99 YOSHITOYO: Flyer of an exhibition of a tiger, 1860--Fine impression and condition, some minor wormholes  
36x49.5cm. ¥30,000
- 100 SADAHIDE: View of Honcho and Miyozakicho, Yokohama, triptych, 1860--Good impressions and condition, center panel slightly stained, a few minute wormholes repaired  
36x24cm. each approx. ¥80,000
- 101 SADAHIDE: Sakura, Inba Conty, Shimosa Province, *Dai Nihon kokugun meisho* (Famous places of provinces of great Japan), 1868--Good impression and condition, very slightly soiled and stained, slightly toned  
25.3x33.8cm. ¥35,000
- 102 RISSHO: *Buyo Yokohama ichiran* (View of Yokohama, Musashi Province at a glance) / Map of Yokohama, triptych, 1866--Good impressions and condition, very slightly soiled  
37.5x25.6cm. each approx. ¥120,000
- 103 HIROSHIGE III: View of trading companies at Yokohama, triptych, 1871--Good impressions, fine condition except minute pinhole, damage on lower corners  
37x24.8cm. each approx. ¥130,000
- 104 NAGASAKI SCHOOL: Dutch and Chinese--Good impression, fair condition, soiled and stained, some wormholes repaired  
22x24.8cm. ¥30,000
- 105 NAGASAKI SCHOOL: Dutch and Indonesian servant--Good impression and condition, slightly toned, tear on upper left restored, a minor wormhole repaired  
30.5x15.1cm. ¥80,000



- 106 NAGASAKI SCHOOL: *Orandajin no zu* (Picture of Dutch)--Good impression and condition, very slightly soiled and worn 32.8x22.5cm. ¥200,000
- 107 NAGASAKI SCHOOL: *Oranda nyonin zu* (Picture of Dutch female) --Good impression and condition, slightly soiled, diagonal fold on top left, some minor wormholes repaired 36.3x16cm. ¥130,000
- 108 NAGASAKI SCHOOL: Dutch viewing steam ship--Good impression and condition, slightly soiled and toned, faint centerfold 31.7x21.8cm. ¥150,000
- 109 NAGASAKI SCHOOL: Port of Nagasaki--Good impression, fair condition, soiled, centerfold, backed 20.5x36.1cm. ¥80,000
- 110 UNSIGNED: *Shimpan kodomo asobi, Bankoku zu* (Newly published Children's playing cards, Collection of countries), 1859--Fair impression, good condition 35.8x24.3cm. ¥48,000
- 111 YOSHITORA: British on a horse, subtitled Hommura, from *Bushu Yokohama meisho zu* (Pictures of famous places of Yokohama, Musashi Province), 1860--Good impression and condition, very slightly soiled, some minor wormholes repaired, fold line along left edge 36x24.8cm. ¥35,000
- 112 YOSHITORA: American woman on a horse, from *Gokakoku no uchi* (Five countries), 1861--Fair impression, good condition, very slightly soiled, lightly backed 36.5x24.5cm. ¥40,000
- 113 YOSHITORA: *Furansujin Ganki yukyo* (French playing at Gankiro), 1861--Fair impression and condition, slightly soiled and stained, some minor wormholes repaired 36.6x25cm. ¥25,000
- 114 YOSHITORA: American women and a child on stilts, 1861--Good impression, fair condition, slightly soiled and worn, a few minor wormholes and damage repaired 35.5x23.4cm. ¥40,000
- 115 YOSHITORA: British officer on horse, 1861--Fair impression, good condition 36.5x24.4cm. ¥45,000
- 116 YOSHITORA: Uncut sheet of *Bankoku jinbutsu no uchi* (Collection of foreigners of all countries), illustrating British and American, 1861--Good impression and condition, some minor wormholes repaired, centerfold 35.4x25.4cm. ¥45,000
- 117 YOSHITORA: Russian couple playing music, 1860--Good impression, fair condition, slightly soiled and damaged 36x24.2cm. ¥35,000
- 118 YOSHIMORI: Portrait of a British man seated on a bench, a rectangle reserve with a view of Oji, from *Toto meisho* (Famous places of the eastern capital), 1861--Good impression and condition, slightly stained 37.1x24.8cm. ¥28,000
- 119 YOSHIMORI: American drawing a picture, a rectangle reserve with a view of Shinobazu Pond, from the same series as above, 1861--Good impression and condition, slightly soiled, a tear restored 36x23.4cm. ¥35,000
- 120 YOSHIIKU: Uncut sheet of *Gaikoku jimbutsu zuga* (Collection of pictures of foreigners), illustrating French, China, Dutch, and British, 1861--Good impression and condition, slightly soiled and stained, lightly backed 35.4x24.5cm. ¥35,000
- 121 YOSHIIKU: Uncut sheet of *Bankoku jimbutsu zukushi* (Collection of figures of all countries), illustrating India, Mongolia, China, and female country, 1861--Good impression and condition, very slightly soiled 35.5x24.5cm. ¥40,000
- 122 YOSHIIKU: British couple, from *Gaikoku jimbutsu zuga* (Pictures of foreigners), 1861--Good impression, fair condition, slightly soiled and worn, slight damage repaired 35.9x24.5cm. ¥35,000
- 123 YOSHIFUJI: A French couple, 1861--Good impression and condition 36.7x24.7cm. ¥60,000
- 124 YOSHIKAZU: British woman on horse, 1862--Good impression and condition 37.2x25.2cm. ¥50,000
- 125 YOSHIKAZU: Russian on a horse, 1861--Good impression and condition, slightly soiled, some minor wormholes repaired 35.5x24.2cm. ¥35,000
- 126 YOSHIKAZU: *Shimpan gaikokujin* (Newly published, Foreigners), 1861--Good impression and condition, minor tear in left margin repaired, lower margin narrow 36.2x24.5cm. ¥35,000
- 127 YOSHIHISA: *Shimpan kodomo asobi, bankoku zukushi* (Newly published, Children's playing card, collection of countries)--Good impression, fair condition, slightly soiled and worn, slight damage along edges repaired, fold lines 35.5x23.7cm. ¥28,000
- 128 NAKAJIMA CHITOSE: *Naichi zakkyo mirai no ponchi-e* (Picture of the future of the confused inland), triptych, 1899--Good impressions and condition, left panel very slightly stained, centerfold 37.5x25.3cm. each approx. ¥260,000
- 129 KUNITERU: Floats of Kanda Myojin Festival, triptych, 1871--Good impressions and condition, very slightly soiled, stained and toned 36.5x25.5cm. each approx. ¥28,000
- 130 TOYOKUNI IV: Prosperity of the newly-built Meganebashi (eyeglass-bridge) at Kanda Sujikai, Tokyo, 1873--Good impressions and condition 36.8x24.9cm. each approx. ¥38,000
- 131 KUNITERU II: Opening of the main hall of Zojoji Temple, Shiba, 1872--Good impression and condition, centerfold 37.3x25.1cm. each approx. ¥150,000
- 132 KUNITERU: Wresters entering the dedicatory sumo match, triptych, 1873--Good impressions and condition 36.5x25.5cm. each approx. ¥35,000
- 133 HIROSHIGE III: Mantai Bridge, triptych, 1873--Good impressions and condition, center panel with vertical centerfold 36.8x25.5cm. each approx. ¥30,000
- 134 HIROSHIGE III: True view of the *Meganebashi* (eyeglass-bridge), a famous view of Edo, triptych, c.1874--Good impressions and condition, very slightly stained and toned, a few minute wormholes 36.5x24.8cm. each approx. ¥35,000
- 135 KUNIMASA IV: Prosperity of Mantai Bridge at Kanda, Tokyo, triptych, c.1874--Good impressions and condition, slightly soiled, stained, and worn 37x25cm. each approx. ¥35,000
- 136 YOSHITORA: *Sujikai Shin-meganebashi ichiran* (New "eyeglass bridge" at Sujikai at a glance), triptych, c.1874--Good impressions and condition, very slightly soiled, a few minute wormholes repaired 35.7x24.8cm. each approx. ¥50,000
- 137 KUNIMATSU: *Dai nikai kangyo hakurankai zu* (Picture of the second domestic exposition), triptych, 1881--Good impressions and condition, a few minor wormholes, center panel very slightly stained 36.3x24.8cm. each approx. ¥25,000
- 138 KUNITOSHI: Emperor's carriage before the imperial palace, triptych, 1890--Good impressions and condition 36.3x24cm. each approx. ¥15,000
- 139 HIROSHIGE III: *Dai Nippon bussan zue* (Pictures of famous products of Great Japan), 118 sheets, complete, c.1877--Generally good impressions and condition, some slightly soiled, stained, damaged, toned, centerfold and/or backed 17.6x24.7cm. each approx. ¥2,500,000
- 140 KIYOCHIKA: Shinobazu Pond in rain, from *Tokyo meisho* (Famous places of Tokyo), c.1877--Good impression and condition, very slightly soiled, very slightly damaged near left edge, side margins trimmed, centerfold 23.5x33.2cm. ¥120,000



- 141 KIYOSHIKA: Fireflies at Ochanomizu, from the same series as above, c.1877--Good impression and condition, margins very slightly soiled, side margins trimmed, centerfold 23.5x33.4cm. ¥120,000
- 142 KIYOSHIKA: *Shinagawa kaijo no chobo* (View of the sea of Shinagawa), from the same series as above, 1879--Good impression and condition, margins very slightly soiled, side margins narrow, centerfold 23.3x33.2cm. ¥160,000
- 143 KIYOSHIKA: Snow at Toshogu Shrine, Ueno, from the same series as above, 1879--Good impression and condition, margins very slightly soiled, a minute wormhole repaired, side margins narrow, centerfold 23.5x33.2cm. ¥140,000
- 144 KIYOSHIKA: Yushima moto-seido, from the same series as above, 1879--Good impression and condition, very slightly faded and toned, some minor stains in margins 23.1x35cm. ¥100,000
- 145 KIYOSHIKA: Iris at Horikiri, from the same series as above, 1879--Good impression and condition, margins very slightly soiled, left margin narrow, centerfold 23.4x33.3cm. ¥80,000
- 146 KIYOSHIKA: *Tokyo Ryogoku hyappongui akatsuki no zu* (Dawn and one-hundred piles at Ryogoku, Tokyo), from the same series as above, 1879--Good impression and condition, margins very slightly soiled, centerfold 23.5x33.5cm. ¥160,000
- 147 KIYOSHIKA: *Takanawa Ushimachi oboro-zuki* (Hazy moon over Ushimachi, Takanawa), from the same series as above, 1879--Good impression and condition, margins very slightly soiled, a minute hole repaired, side margins narrow, centerfold 23.3x33.3cm. ¥160,000
- 148 KIYOSHIKA: *Omori asa no umi* (Morning sea at Omori), from the same series as above, 1880--Good impression and condition, margins very slightly soiled, side margins narrow, centerfold 23.3x33.3cm. ¥140,000
- 149 KIYOSHIKA: Distant view of Eitai Bridge, seen from Mitsumata, from the same series as above, 1880--Good impression and condition, a few minute wormholes in lower margin repaired 34.5x36.4cm. ¥180,000
- 150 KIYOSHIKA: *Tsukudajima usei* (Clear sky after rain at Tsukuda Island), from the same series as above, 1880--Good impression and condition, slightly soiled and creased, centerfold 23.2x33cm. ¥100,000
- 151 KIYOSHIKA: Sunrise at Mantai Bridge, from the same series as above, 1880--Good impression and condition, margins very slightly soiled, centerfold 23.3x33.5cm. ¥100,000
- 152 KIYOSHIKA: Mint at Tokiwabashi, from the same series as above, 1880--Good impression and condition, margins very slightly soiled, side margins narrow, centerfold 23.3x33.3cm. ¥120,000
- 153 KIYOSHIKA: *Kudanzaka satsukiyo* (Night in May at Kudan Hill), from the same series as above, 1880--Good impression and condition, margins very slightly soiled, side margins narrow, centerfold 23.5x33.3cm. ¥140,000
- 154 KIYOSHIKA: *Gohommatsu ame tsuki* (Gohommatsu in rain under the moon), from the same series as above, 1880--Good impression and condition, margins very slightly soiled, centerfold 23.4x33.2cm. ¥160,000
- 155 KIYOSHIKA: *Gohommatsu ame tsuki* (Gohommatsu in rain under the moon), from the same series as above, 1880--Good impression and condition, slightly toned, margins very slightly soiled, ownership seal 23.6x35.3cm. ¥250,000
- 156 KIYOSHIKA: Taro Inari Shrine at Asakusa, from the same series as above, c.1881--Good impression and condition, very slightly soiled 23x34.5cm. ¥200,000
- 157 KIYOSHIKA: Fireworks at Ikenohata, from the same series as above, 1881--Good impression and condition, margins very slightly soiled, two minute wormholes in lower margin repaired, centerfold 23.3x33.5cm. ¥140,000
- 158 KIYOSHIKA: *Sumidagawa yoru* (Night at Sumida River), from the same series as above, 1881--Good impression and condition, margins very slightly soiled, centerfold 23.5x33.3cm. ¥120,000
- 159 KIYOSHIKA: *Imado kagetsu* (Summer moon at Imado), from the same series as above, 1881--Good impression and condition, very slightly soiled near margins, side margins narrow, minor repair on lower right corner, centerfold 23.5x33.4cm. ¥120,000
- 160 KIYOSHIKA: Wisteria at Kameido, from the same series as above, 1881--Good impression and condition, margins very slightly soiled, a few minor damage repaired, centerfold 23.4x33.3cm. ¥80,000
- 161 KIYOSHIKA: Night at Nihonbashi, from the same series as above, 1881--Good impression and condition, margins very slightly soiled, lower right corner very slightly damaged, centerfold 23.3x33.5cm. ¥160,000
- 162 KIYOSHIKA: Daimaru department store at Odemmacho, from the same series as above, 1881--Good impression and condition, margins very slightly soiled, centerfold 23.3x33.3cm. ¥80,000
- 163 KIYOSHIKA: Okura Bridge, Honjo, from the same series as above, c.1881--Good impression and condition, margins very slightly soiled, centerfold 23.5x33.3cm. ¥80,000
- 164 KIYOSHIKA: *Kyu hommaru yukibare* (Clear sky after snow at the site of Edo Castle), from the same series as above, c.1881--Good impression and condition, very slightly soiled, margins slightly narrow, centerfold 23.4x33.3cm. ¥80,000
- 165 KIYOSHIKA: *Hakone sanchu yori Fugaku chobo* (View of Mount Fuji from mountains of Hakone), 1880--Good impression and condition, margins very slightly soiled, a few minor wormholes in lower margin repaired, centerfold, lightly backed 23.4x33.3cm. ¥100,000
- 166 KIYOSHIKA: Enoshima Island, from *Nihon meisho zue* (Famous views of Japan), 1896--Good impression and condition, slightly soiled and stained, centerfold 36.5x24.5cm. ¥30,000
- 167 RYUSON: Yaomatsu Restaurant at Mukojima, 1881--Good impression and condition, very slightly soiled, slight loss of metallic pigment in margins, centerfold 23.5x33.5cm. ¥400,000
- 168 YASUJI: *Asakusabashi yukei* (Evening view at Asakusa Bridge), c.1881--Good impression and condition, margins very slightly soiled, very slightly creased on upper right, side margins narrow, centerfold 23.5x33.4cm. ¥180,000
- 169 YASUJI: *Asakusabashi uchu no kei* (View of Asakusa Bridge in rain), 1881--Good impression, fair condition, slightly soiled and worn, some small tears and wormholes repaired 23.4x33.3cm. ¥180,000
- 170 YASUJI: Embankment of Kakigaracho, 1881--Good impression and condition, damage long lower edge and a few minute wormholes repaired, side margins narrow, centerfold 23.5x33.2cm. ¥180,000
- 171 YASUJI: Makurabashi Bridge, 1881--Good impression and condition, slightly soiled and stained, narrow margins, centerfold 23.5x33.3cm. ¥100,000



- 172 KIYOCHIKA: A sheet from *Hitori rokumenso* (Six expressions of a person), 1884--Good impression, fine condition  
36.7x25cm. ¥40,000
- 173 KIYOCHIKA: A sheet from the same series as above, 1884--Good impression, fine condition  
36.7x24.8cm. ¥40,000
- 174 KIYOCHIKA: A sheet from the same series as above, 1884--Good impression, fine condition  
36.2x24.8cm. ¥40,000
- 175 KIYOCHIKA: A sheet from the same series as above, 1884--Good impression, fine condition  
36x24.6cm. ¥40,000
- 176 KIYOCHIKA: Ushijima, Sumida River, from *Kiyochika Ponchi* (Kiyochika Punch), c.1881--Good impression, fair condition, slightly soiled, stained, and toned, minor damage repaired, centerfold  
35.2x23.6cm. ¥20,000
- 177 KIYOCHIKA: Sensoji Temple, Asakusa, from the same series as above, c.1881--Good impression, fair condition, slightly soiled, stained, and toned, minor damage repaired  
35.5x23.5cm. ¥18,000
- 178 KIYOCHIKA: Takinogawa, Oji, from the same series as above, c.1881--Good impression, fair condition, slightly soiled, stained, and toned, minor damage repaired  
35.4x23.5cm. ¥20,000
- 179 KIYOCHIKA: Sanjusangen Moat, from the same series as above, c.1881--Good impression, fair condition, slightly soiled, stained, and toned, minor damage repaired  
35.4x23.5cm. ¥18,000
- 180 KIYOCHIKA: Shin Yoshiwara, from the same series as above, c.1881--Good impression and condition, very slightly soiled and toned, slight damage repaired, faint centerfold  
35.2x23.5cm. ¥20,000
- 181 KIYOCHIKA: Kanda Myojin Shrine, from the same series as above, c.1881--Good impression, fair condition, slightly soiled, stained, and toned, a few minor wormholes repaired, centerfold  
35.5x23.6cm. ¥20,000
- 182 KIYOCHIKA: Ekoin Temple, Ryogoku, from the same series as above, c.1881--Good impression, fair condition, slightly soiled, stained, and toned, centerfold  
35.4x23.5cm. ¥20,000
- 183 KIYOCHIKA: Yoshimachi, from the same series as above, c.1881--Good impression, fair condition, slightly soiled, stained, and toned, centerfold  
35.4x23.5cm. ¥18,000
- 184 KIYOCHIKA: Fukagawa Susaki, from the same series as above, c.1881--Good impression and condition, very slightly soiled, stained, and worn, a minor wormhole, centerfold  
35.4x23.6cm. ¥25,000
- 185 KIYOCHIKA: Tenno Pond, Yanaka from the same series as above, c.1881--Good impression and condition, very slightly soiled and toned, slight damage repaired, faint centerfold  
35.5x23.6cm. ¥35,000
- 186 KIYOCHIKA: Geisha of Tokyo, Osaka, and Kyoto, 1879--Good impression and condition, centerfold  
36x24.7cm. ¥150,000
- 187 KIYOCHIKA: *Aki no nagame sankyoku awase* (Instrumental trio, a scene of autumn), from *Shiki no asobi uchi* (Pleasures of four seasons), triptych, 1896--Good impressions and condition  
37.5x25.4cm. each approx. ¥150,000
- 188 KIYOCHIKA: Kesa Gozen, from *Kyodo risshi no motoi* (Instruction in the fundamentals of success), c.1887--Fine impression, good condition, faint centerfold  
36.6x25.2cm. ¥13,000
- 189 KIYOCHIKA: Sato Tsugunobu, from the same series as above, 1886--Fine impression, good condition, slightly toned  
37x25cm. ¥13,000
- 190 KIYOCHIKA: Kikuchi Takemitsu, from the same series as above, c.1887--Good impression and condition, very slightly soiled  
36.7x25cm. ¥15,000
- 191 KIYOCHIKA: Uesugi Kagetora (Kenshin), from the same series as above, 1888--Good impression and condition, faint centerfold  
36.5x25cm. ¥13,000
- 192 KIYOCHIKA: Tokugawa Takechiyo (Ieyasu), from the same series as above, 1885--Good impression and condition, a few minor stains  
36.3x24.6cm. ¥13,000
- 193 KIYOCHIKA: Oda Nobunaga, from the same series as above, 1885--Good impression and condition, very slightly soiled and toned, centerfold  
37.1x25.1cm. ¥13,000
- 194 KIYOCHIKA: Toyotomi Hideyasu, from the same series as above, 1886--Good impression and condition, slightly toned, very slightly creased  
36.7x25.1cm. ¥13,000
- 195 TOSHIKATA: Farmer Yasaku, from the same series as above, 1889--Good impression and condition, very slightly toned and stained  
37x25.1cm. ¥13,000
- 196 KIYOCHIKA: Ogiu Sorai, from the same series as above, 1886--Good impression and condition, very slightly stained and toned, centerfold  
37.3x25cm. ¥13,000
- 197 KIYOCHIKA: Tokugawa Yoshinobu, from the same series as above, 1886--Good impression and condition, very slightly toned, centerfold  
37.2x25.3cm. ¥13,000
- 198 TANKEI: Hotoke Gozen, from the same series as above, 1885--Good impression and condition, slightly stained, stained  
37.2x25.2cm. ¥10,000
- 199 KUNIMASA III: Takeda Katsuyori and his troops in Mount Tenmoku, c.1844--Good impressions and condition, a few pinhole worming  
37.7x25.5cm. each approx. ¥60,000
- 200 YOSHIKATSU: Yoritomo's hunting at the foot of Mount Fuji, triptych, c.1844--Fair impressions, good condition, some minute wormholes repaired, centerfold  
37.5x24.8cm. each approx. ¥38,000
- 201 SADAHIDE: A battle of Kamakura, triptych, c.1848--Good impressions and condition, a few minor stains  
37.5x25.6cm. each approx. ¥45,000
- 202 SADAHIDE: *Takeda-ke yusho ikusa hyojo no zu* (Council at Takeda Shingen's retainers), triptych, c.1844--Good impressions and condition, slightly  
37.5x25.8cm. each approx. ¥60,000
- 203 KUNITSUNA: Death of Inagawa (Imagawa) Yoshimoto in the battle of Okehazama, triptych, 1865--Fine impressions, good condition, some pinhole worming, faint centerfold  
37x25cm. each approx. ¥70,000
- 204 KIYOCHIKA: Chinzei Hachiro Minamoto no Tametomo, from *Nihon gaishi no uchi* (History of Japan), triptych, c.1882--Good impressions and condition, a minor stain on center panel, faint fold line along edges, minor damage on center panel repaired  
37.5x25.5cm. each approx. ¥70,000
- 205 KIYOCHIKA: Kusazuribiki, a scene of *Soga monogatari* (Tale of Soga Brothers), Asahina pulling Juro's armor, triptych, 1883--Good impressions and condition, centerfold  
37.2x25cm. each approx. ¥55,000
- 206 NOBUKAZU: Kojima Takanori engraving a poem on a cherry tree at the etape of the Emperor Godaigo after failing to recapture the emperor, triptych, 1892--Good impressions and condition, tape residue and stains on corners  
37x24.5cm. each approx. ¥35,000
- 207 TOYONOBU: *Shinsen Taikoki* (Newly selected history of Toyotomi Hideyoshi), diptych, 1883--Good impressions and condition, a few minute wormholes, centerfold  
37.2x24.8cm. each approx. ¥18,000



- 208 KUNIYOSHI: Kumonryu Shishin, from *Tsuzoku Suikoden goketsu hyakuhachinin no hitori* (One-hundred and eight heroes of the popularized Suikoden), c.1830--Good impression and condition, slightly faded, soiled, and trimmed, slight damage along edges repaired  
36.3x25.7cm. ¥350,000
- 209 KUNIYOSHI: Night attack of Soga Brothers, triptych, c.1844--Good impressions and condition, faint centerfold  
38x25.5cm. each approx. ¥150,000
- 210 KUNIYOSHI: Retainers visiting Asano's alter at Sengakuji Temple after the revenge, triptych, c.1848--Good impressions and condition, minor tear on some corners repaired  
38x25.9cm. each approx. ¥100,000
- 211 KUNIYOSHI: Oboshi Yuranosuke Yoshio, from *Seichu gishi shozo* (Portraits of Loyal retainers), 1852--Good impression and condition, very slightly soiled, corner tears restored  
36.2x24.2cm. ¥350,000
- 212 KUNIYOSHI: Sugino Juheiji Tsugufusa, from the same series as above, 1852--Good impression and condition, very slightly soiled and toned  
37.6x25.5cm. ¥260,000
- 213 KUNIYOSHI: Yato Yomoshichi Norikane, from the same series as above, 1852--Good impression and condition, very slightly soiled, a minute hole on top, a minor wormhole on lower left, slightly trimmed  
36.4x24.3cm. ¥230,000
- 214 KUNIYOSHI: Yada Gorozaemon Suketake, from the same series as above, 1852--Good impression and condition, very slightly soiled, a minor wormhole on lower right, slightly trimmed  
36.2x24.2cm. ¥230,000
- 215 KUNIYOSHI: Badgers playing with their scrotum, c.1844--Good impression, fair condition, soiled and damaged, fold lines, tears restored with light backing  
35.5x24cm. ¥60,000
- 216 KUNIYOSHI: Badgers playing with their scrotum, c.1844--Good impression, fair condition, soiled and damaged, fold lines, tears restored with light backing  
35.5x24.2cm. ¥65,000
- 217 KUNIYOSHI: Badgers playing with their scrotum, c.1844--Good impression, fair condition, slightly soiled and damaged, wormholes repaired with light backing  
38x25.8cm. ¥80,000
- 218 KUNIYOSHI: Yui, from *Tokaido gojusan tsui* (Fifty-three matching pictures of Tokaido), c.1844--Good impression and condition, trimmed  
35.7x24.4cm. ¥55,000
- 219 KUNIYOSHI: Genji and beauties observing fire fishing, titled *Hi* (Fire), from Mitate gogyo (Parody of five elements), triptych, c.1848--Good impressions and condition, a few minute wormholes repaired, faint centerfold  
36x25.5cm. each approx. ¥430,000
- 220 KUNIYOSHI: A spinning-top performance by Takezawa Baisho, c.1848--Good impression and condition, slightly soiled and worn, very slightly stained  
36.5x25cm. ¥38,000
- 221 YOSHITOSHI: Loyal retainers planning the night attack, triptych, 1861--Good impressions and condition  
36.5x24.5cm. each approx. ¥260,000
- 222 YOSHITOSHI: *En'yu rokkasen* (Selection of poems by six heroes accompanied by geisha), six sheets, complete, 1879--Good impressions and condition, slightly soiled, stained, and trimmed, each with a minor wormhole on lower right repaired, binding holes, ownership seal  
35.8x24.2cm. each approx. ¥200,000
- 223 YOSHITOSHI: *Fujiwara no Yasumasa gekka roteki zu* (Fujiwara no Yasumasa playing the flute by moonlight), triptych, 1883--Good impressions and condition, very slightly damaged, faint fold line along edges, a cut on right panel repaired  
34.8x24cm. each approx. ¥1,800,000
- 224 YOSHITOSHI: *Shinkei sanjurokkaisen* (The new forms of the thirty-six ghosts), thirty-six sheets, complete, with table of contents, sixteen sheets first state, 1890,1902--Good impressions and condition, very slightly soiled, slightly stained, narrow margins, some with fold line in left margin  
35.5x23.8cm. each approx. ¥2,500,000
- 225 YOSHITOSHI: *Tsuki no hatsumei* (Invention from the moon), Hozoin, from Tsuki hyakushi (One hundred aspects of the moon), 1891--Good impression and condition, very slightly stained, corners cut, backed  
36.6x24.5cm. ¥50,000
- 226 YOSHITOSHI: Priest Benkei and Minamoto no Yoshitsune, from *Dai Nihon meisho kagami* (Mirror of heroes of great Japan), 1878--Good impression and condition, faint centerfold  
36x24.4cm. ¥30,000
- 227 YOSHITOSHI: Hojo Ujiyasu, from the same series as above, 1879--Good impression and condition, a minute wormhole in right margin, faint centerfold  
36x24.4cm. ¥35,000
- 228 YOSHITOSHI: Taira no Masakado, from the same series as above, 1879--Good impression and condition, a minute wormhole in right margin, faint centerfold  
36x24.3cm. ¥35,000
- 229 YOSHITOSHI: Tokugawa Ieyasu, from the same series as above, c.1878--Good impression and condition, a minute wormhole, faint centerfold  
36x24.4cm. ¥25,000
- 230 YOSHITOSHI: Higashiyama Yoshimasa, from the same series as above, 1879--Good impression and condition, a minute wormhole in right margin, faint centerfold  
35.7x24.3cm. ¥25,000
- 231 YOSHITOSHI: Hojo Yasutoki, from the same series as above, 1879--Good impression and condition, a minute wormhole in right margin, faint centerfold  
36x24.4cm. ¥25,000
- 232 KUNIYOSHI: Actors playing *ken* game, c.1848--Good impression and condition, slightly soiled and creased, some minor wormholes repaired  
37.2x25.5cm. ¥50,000
- 233 KUNIYOSHI: Animalized actors and crane, tortoise, and pine tree, playing *ken* game, c.1848--Good impression, fair condition, soiled and worn  
36.5x24.8cm. ¥40,000
- 234 EISEN: Ebisu, Hotei, Daikoku playing ken game, c.1830--Good impression and condition, slightly soiled and worn, centerfold  
36.3x24.6cm. ¥35,000
- 235 UNSIGNED: Actors playing *ken* game--Good impression, fair condition, soiled and worn, some minor wormholes repaired  
36.2x24.3cm. ¥30,000
- 236 YOSHIFUJI: Actors playing *ken* game, c.1848--Good impression and condition, very slightly soiled, wormholes repaired  
35.8x25.5cm. ¥35,000
- 237 YOSHIFUJI: Actors playing ken game, c.1848--Good impression and condition, very slightly soiled, a minute wormhole, slightly trimmed  
36x25cm. ¥35,000
- 238 YOSHIIKU: Actors playing *ken* game, 1861--Good impression and condition, very slightly soiled, some minute wormholes repaired  
37x25.3cm. ¥35,000
- 239 YOSAI: Animalized actors as toad, tiger, and fox, playing *ken* game, 1874--Good impression and condition, slightly soiled, stained and worn, pinholes repaired  
36.5x24.8cm. ¥18,000
- 240 UNSIGNED: Satire picture of Boshin War, diptych, 1867--Good impression and condition, slightly soiled, stained, and worn, some minor wormholes repaired  
34.6x23.5cm. each approx. ¥15,000



- 241 **UNSIGNED:** Satire picture of Boshin War, diptych, 1868--Good impressions and condition, slightly soiled and worn, some minor wormholes  
34.8x24cm. each approx. ¥15,000
- 242 **UNSIGNED:** Fight of blind men, a satire picture of Boshin War, diptych, c.1868--Good impressions, fair condition, slightly stained, damaged  
35.2x25cm. each approx. ¥12,000
- 243 **UNSIGNED:** Satire picture of Boshin War, diptych, c.1868--Good impressions and condition, slightly soiled, stained, and worn, some minor wormholes  
36.6x25cm. each approx. ¥15,000
- 244 **UNSIGNED:** Satire picture of Boshin War, diptych, c.1868--Good impressions and condition, slightly soiled, stained, and worn, some minor wormholes  
35.3x24cm. each approx. ¥15,000
- 245 **UNSIGNED:** Figures making large mochi (rice cake), a satire picture of Boshin War, diptych, 1868--Good impressions and condition, some minor wormholes, slightly trimmed, lightly backed  
34.8x23.8cm. each approx. ¥20,000
- 246 **UNSIGNED:** Figures pulling a pine tree while a foreigner laughing at, a satire picture of Boshin War, diptych, 1868--Good impressions and condition, slightly toned and damaged  
36.1x24.4cm. each approx. ¥15,000
- 247 **UNSIGNED:** Titled *Yononaka no uranai* (Fortunetelling in the world), a satire picture of Boshin War, diptych, c.1868--Good impressions and condition, slightly soiled and trimmed, slight damage along edges  
35x23.3cm. each approx. ¥15,000
- 248 **UNSIGNED:** Chant of *Komochi Yamanba*, a satire picture of Boshin War, diptych, c.1868--Good impressions and condition, slightly trimmed, backed  
35.2x24cm. each approx. ¥18,000
- 249 **UNSIGNED:** Titled *Tosei Mifushi no tanoshimi*, a satire picture of Boshin War, diptych, 1868--Good impression, fair condition, slightly soiled, stained, and worn  
36.5x24.8cm. each approx. ¥15,000
- 250 **VARIOUS ARTISTS:** Prints related to Saigo Takamori, five diptychs and one single sheet, 1877, 88--Good impressions and condition, slightly soiled and worn, some with wormholes, centerfold  
36.3x25cm. each approx. ¥80,000
- 251 **TOYOKUNI III:** Portrait of the actor Kataoka Gado in the role of Danshichi Kurobei, titled *Natsu no yami* (Darkness in summer), from *Mitate yami zukushi* (Parody collection of darkness), 1855--Good impression and condition, a few minute wormholes near right edge  
35.5x24.4cm. ¥200,000
- 252 **YOSHITORA:** Portrait of a fireman, 1858--Good impression and condition, very slightly soiled and stained, wormholes repaired, damage along fold line  
35.5x24.5cm. ¥30,000
- 253 **TOYOKUNI III:** Portrait of the actor Ichikawa Ichizo in the role of a carpenter Mutsubiki Chokichi, 1860--Good impression and condition, a minute wormhole, lightly backed  
35x23.4cm. ¥50,000
- 254 **TOYOKUNI III:** Actors climbing the mountain pass to Afuri Shrine in the Mount Oyama, diptych, 1860--Good impressions and condition, a minute wormhole on left panel  
37.3x25.5cm. each approx. ¥250,000
- 255 **TOYOKUNI III:** Portrait of the actor Ichimura Kakitsu in the role of Tachibana Tsurukichi, 1861--Good impression and condition, very slightly stained  
37.5x26cm. ¥120,000
- 256 **TOYOKUNI III:** Portrait of the actor Ichikawa Ichizo in the role of Ingakozo Rokunosuke, 1861--Good impression and condition  
37x25.5cm. ¥100,000
- 257 **TOYOKUNI III:** Actors in the role of braveries, triptych, 1863--Good impressions and condition, very slightly soiled and stained, slightly trimmed  
36.3x24cm. each approx. ¥300,000
- 258 **TOYOKUNI III:** Actors in the waterfall of Afuri Shrine in the Mount Oyama, 1863--Good impressions and condition, slightly soiled and trimmed, some minor damage repaired  
36.4x24.1cm. each approx. ¥250,000
- 259 **TOYOKUNI III:** *Mitate rokkasen* (Parody selection of six flowers and actors), six panel complete, 1863--Good impressions and condition, very slightly soiled and toned, some wormholes near edges repaired  
36.5x25.5cm. each approx. ¥150,000
- 260 **KUNICHIKA:** Portrait of the actor Ichimura Uzaemon in the role of Takemon no Toramatsu, 1862--Good impression and condition, very slightly soiled  
36.4x24.4cm. ¥150,000
- 261 **KUNICHIKA:** Portrait of the actor Nakamura Saikan, from *Tosei gomeijin* (Five masters of the day), 1864--Good impression and condition, very slightly soiled  
35.2x24.2cm. ¥55,000
- 262 **KUNICHIKA:** Portrait of the actor Ichimura Kakitsu, from the same series as above, 1864--Good impression and condition, very slightly soiled  
35.2x24.2cm. ¥55,000
- 263 **KUNICHIKA:** Portrait of the actor Bando Hikosaburo, from the same series as above, 1864--Good impression and condition, slightly soiled, centerfold, lightly backed  
35.2x24.2cm. ¥45,000
- 264 **KUNICHIKA:** Portrait of the actor Sawamura Tanosuke in the role of Yukanbakocho Kichisa, subtitled *Muenji no bansho* (Evening bell at abandoned temple, from *Mitate shiranami hakkei* (Parody of eight bandit performances of kabuki), 1865--Good impression and condition  
36.3x24.6cm. ¥80,000
- 265 **KUNICHIKA:** A scene of a kabuki performance, triptych, 1870--Good impressions and condition, very slightly soiled, slightly damaged, a few minute wormholes, fold lines repaired  
35.8x23.9cm. each approx. ¥25,000
- 266 **KUNICHIKA:** Portrait of actor Nakamura Shikan, Sawamura Tanosuke, and Ichimura Kakitsu, triptych, 1866--Good impressions and condition, left panel slightly stained  
37x25cm. each approx. ¥100,000
- 267 **KUNICHIKA:** Portrait of actor Ichikawa Danjuro and Ichikawa Kuzo, triptych, 1894--Good impressions and condition, center panel very slightly stained, lightly backed  
36.8x25cm. each approx. ¥80,000
- 268 **KUNICHIKA:** Portrait of actors in female roles wearing *yukata* (bath robe), triptych, 1874--Good impressions and condition, very slightly stained, slightly toned  
37x25cm. each approx. ¥120,000
- 269 **CHIKANOBU:** Portrait of the actor Ichikawa Danjuro in the role of Kumonryu, and Ichikawa Sadanji in the role of Rochishin, triptych, 1886--Good impressions and condition, left panel very slightly soiled at bottom, lightly backed, slightly trimmed  
35.5x23.5cm. each approx. ¥150,000
- 270 **GINKO:** Portrait of the actor Ichikawa Komazo, 1876--Good impression and condition, some minor wormholes repaired, a vertical foldline  
35.5x25cm. ¥45,000
- 271 **KASON:** Frontispiece of the novel, Kuro tokage, from *Bungei Club* magazine, vol. 1-5, 1895--Good impression and condition, original foldline  
22.5x28.5cm. ¥8,000
- 272 **TOYOKUNI:** Portrait of the actor Sawamura Sojuro in the role of Narukami Katsunosuke, and Bando Mitsugoro in the role of Mikatsuchi Tsurunosuke, diptych, 1811--Good impressions and condition, right panel slightly faded and soiled, lower corners restored  
38.2x25.6cm. ¥350,000
- 273 **TOYOKUNI:** Portrait of the actor Onoe Kikugoro, c.1804--Good impression and condition, a few minute wormholes repaired, slightly trimmed  
38.5x26.3cm. ¥60,000



- 274 KUNISADA: A scene of a kabuki performance, triptych, 1820--Good impressions and condition, very slightly soiled, slightly trimmed, binding holes on left panel  
35x25cm. each approx. ¥45,000
- 275 KUNISADA: Chapters of the kabuki performance *Kanadehon Chushingura*, twelve sheets, complete, c.1830--Good impressions and condition, very slight damage along some corners and edges, small tear on lower right corner of chapter V  
37.7x25.9cm. each approx. ¥190,000
- 276 KUNISADA: A scene of a kabuki performance, pentaptych, 1840--Good impressions and condition, very slightly soiled, binding holes, a few minor tear holes on right panel  
36.8x25.4cm. each approx. ¥180,000
- 277 KUNIYOSHI: Memorial portrait of the actor Iwai Hanshiro VI, 1836--Good impression and condition, very slightly soiled, fold lines  
37.3x25.2cm. ¥13,000
- 278 TOYOKUNI III: Portrait of actors, five sheets, complete, 1855--Good impressions and condition, one sheet with a minute wormhole, three sheets with fold line along side edges  
36.5x26cm. each approx. ¥150,000
- 279 YOSHITSURU: Child preparing for *Shiokumi* dance, c.1844--Good impression and condition, slightly soiled, a few minute wormholes along right edge  
37.2x25cm. ¥20,000
- 280 TOYOKUNI III: Actor portraits of Ichikawa Family in sake cups, from *Toyokuni manga mitsugumi sakazuki* (Toyokuni's sketches in triple sake cups), 1861--Good impression and condition, very slightly soiled, very slightly damaged along edges  
37.3x25.7cm. ¥18,000
- 281 TOYOKUNI III: Actor portraits of Bando Family in sake cups, from the same series as above, 1861--Good impression and condition, very slightly soiled, very slightly damaged along edges  
37.5x26cm. ¥13,000
- 282 TOYOKUNI III: Actor portraits of Arashi Family in sake cups, from the same series as above, 1861--Good impression and condition, very slightly soiled, very slightly damaged along edges  
37.3x25.8cm. ¥13,000
- 283 TOYOKUNI III: Act V, titled *Yoru no ame* (Night rain), from *Chushingura hakkei* (Eight views of *Kanadehon Chushingura*), printed on luxury paper, details printed in lacquer, c.1863--Fine impression, good condition, minute wormholes, right and lower margin trimmed  
36x24.8cm. ¥15,000
- 284 TOYOKUNI III: Miyanojima Kotaro, from *Toyokuni manga zue* (Toyokuni's caricatures), 1860--Good impression and condition, lightly backed  
35.4x25cm. ¥35,000
- 285 TOYOKUNI III: Tengukozo Kiritaro, from *Toyokuni kigo Kijutsu kurabe* (Comparison of witchcrafts, drawn by Toyokuni), printed on luxury paper, 1861--Good impression and condition, binding holes  
36x25.9cm. ¥120,000
- 286 TOYOKUNI III: Portrait of the actor Ichikawa Shinnosuke IV in the role of Nagao Saburo Kagekatsu, published by Kinshodo, printed on luxury paper, 1863--Fine impression, good condition, slightly faded and toned, minor tears on lower edge and corners repaired  
37.2x25.3cm. ¥120,000
- 287 YOSHITSUYA: Portrait of actors before fireflies, five sheets, complete, 1862--Good impressions and condition, some sheets very slightly soiled  
36.5x25.4cm. each approx. ¥180,000
- 288 KUNIAKI: A scene of the kabuki performance, Sukeroku, triptych, 1862--Good impressions and condition  
37.2x25.8cm. each approx. ¥23,000
- 289 KUNICHIKA: Portrait of the actor Ichikawa Danjuro, c.1871--Good impressions and condition, very slightly soiled  
37x25.5cm. each approx. ¥35,000
- 290 KUNICHIKA: Ishikawa Goemon, from *Zen aku kijin kagami* (Mirror of furious figures of good and evil), 1868--Good impression and condition, very slightly soiled and stained, some minor wormholes repaired  
36.8x25.5cm. ¥18,000
- 291 KUNICHIKA: Nango Rikimaru, from the same series as above, c.1868--Good impression and condition, slightly soiled and stained, wormholes repaired  
36.5x25cm. ¥18,000
- 292 KUNICHIKA: Kijin Omatsu, from the same series as above, 1868--Good impression and condition, very slightly stained, a few minor wormholes and slight damage repaired, left margin trimmed  
37x24cm. ¥15,000
- 293 KUNICHIKA: Uji Joetsu, from the same series as above, c.1868--Good impression and condition, very slightly stained, wormholes repaired  
37x25cm. ¥15,000
- 294 KUNICHIKA: Portrait of the actor Otani Shido in the role of Oniwa, 1869--Good impression and condition, a pinhole worming, lightly backed  
35.8x24.3cm. ¥25,000
- 295 KUNICHIKA: Portrait of the actor Otani Tomoemon in the role of Iruka Daijin, 1869--Good impression and condition, very slightly soiled, a minute wormhole, lightly backed  
36x24.3cm. ¥35,000
- 296 KUNICHIKA: Portrait of the actor Otani Shido in the role of Omura, 1869--Good impression and condition, very slightly soiled, a minor wormhole, lightly backed, fold lines  
35.8x24.2cm. ¥25,000
- 297 KUNICHIKA: Portrait of the actor Ichimura Uzaemon III in the role of Tsumagasa Soyōjiro, 1865--Good impression and condition, very slightly stained, a minute hole  
37.2x25cm. ¥12,000
- 298 KUNICHIKA: A scene of a kabuki performance, triptych, 1869--Good impressions and condition, slightly soiled and trimmed, left panel, fold line along left edge of left panel  
35x24cm. each approx. ¥20,000
- 299 KUNICHIKA: Actors at wheat tea stall, triptych, 1870--Good impressions and condition, very slightly stained and toned  
37.5x25.7cm. each approx. ¥25,000
- 300 KUNICHIKA: Actors in a kabuki performance, triptych, 1871--Good impressions and condition  
36.5x25cm. each approx. ¥20,000
- 301 KUNICHIKA: Actors in a kabuki performance, triptych, 1871--Good impressions and condition  
36x24.8cm. each approx. ¥23,000
- 302 KUNICHIKA: A scene of a kabuki performance, triptych, 1875--Good impressions and condition, very slightly soiled, lightly backed, tear on left panel repaired  
35x24cm. each approx. ¥20,000
- 303 KUNICHIKA: A scene of a kabuki performance, triptych, 1878--Good impressions and condition, very slightly soiled, some pinhole worming  
37x25.2cm. each approx. ¥20,000
- 304 KUNICHIKA: Portrait of actors, three sheets, 1885--Good impressions and condition, very slightly soiled, right panel very slightly stained  
36.5x24.3cm. each approx. ¥25,000
- 305 KUNICHIKA: A scene of a kabuki performance, triptych, 1885--Good impressions and condition, lightly backed  
35.5x23.5cm. each approx. ¥24,000
- 306 KUNICHIKA: Hidari Jingoro, from Shin kabuki juhachiban no uchi (New eighteen master plays of the Ichikawa Family), triptych, 1887--Good impressions and condition  
37.2x24cm. each approx. ¥55,000
- 307 KUNICHIKA: A scene of a kabuki performance, triptych, 1888--Good impressions and condition, left panel very slightly stained, lightly backed  
36x23.6cm. each approx. ¥45,000



- 308 CHIKASHIGE: Actors visiting Mount Oyama, triptych, 1880--Good impressions and condition, very slightly soiled, lightly backed  
36.5x24cm. each approx. ¥70,000
- 309 KUNICHIKA: A scene of a kabuki performance, triptych, 1888--Good impressions and condition, lightly backed  
36x23.8cm. each approx. ¥120,000
- 310 KUNICHIKA: A scene of a kabuki performance, triptych, 1889--Good impressions and condition, very slightly soiled, left panel very slightly stained  
37.1x24cm. each approx. ¥38,000
- 311 KUNICHIKA: A scene of a kabuki performance, triptych, 1894--Good impressions and condition, a few minute wormholes, backed, center panel very slightly stained  
35.5x23.8cm. each approx. ¥50,000
- 312 KUNICHIKA: A scene of the play Ichinotani futaba gunki, triptych, 1895--Good impressions and condition, very slightly soiled, centerfold  
37.3x26cm. each approx. ¥15,000
- 313 KUNICHIKA: Key block of a print illustrating a portrait of the actor Ichikawa Danjuro--Good condition  
17.3x24.2cm. ¥180,000
- 314 KUNIUME: Scene of the kabuki performance, *Shisenryo koban no umenoha*, also titled *Chiyodajo uwasa no shiranami*, vertical diptych, 1885--Good impressions and condition  
37.1x25cm. each approx. ¥220,000
- 315 KUNIMASA IV: A scene of a kabuki performance, triptych, 1887--Good impressions and condition, left panel slightly stained, lightly backed  
36.1x23.8cm. each approx. ¥65,000
- 316 KOCHORO: A scene of a kabuki performance, triptych, 1892--Good impressions and condition, some pinhole worming, centerfold  
37x24.8cm. each approx. ¥15,000
- 317 KOCHORO: A scene of a kabuki performance, triptych, 1893--Good impressions and condition, slightly soiled and worn, left panel very slightly stained  
36.7x24.5cm. each approx. ¥12,000
- 318 UNSIGNED: Miniature stage model of the kabuki performance, Senbon zakura (One thousand cherry tree), two sheets, complete, 1896--Good impressions and condition  
36.5x24.8cm. each approx. ¥25,000
- 319 UNSIGNED: Miniature stage model of a kabuki performance, three sheets, complete, 1893--Good impressions and condition  
37.4x25.1cm. each approx. ¥30,000
- 320 UNSIGNED: Miniature stage model of the kabuki scene of Toyotomi Hideyoshi evacuate the castle after earthquake, three sheets, complete, 1896--Good impressions and condition, margins very slightly soiled  
37.2x25.2cm. each approx. ¥30,000
- 321 UNSIGNED: Miniature stage model of the kabuki performance, *Nijushiko*, three sheets, complete, 1902--Good impressions and condition, margins very slightly soiled  
36.5x24.5cm. each approx. ¥30,000
- 322 KUNIMASA IV: A miniature scenery model of a scene of Shino-Japan War, three sheets, complete, 1893--Good impressions and condition  
37.4x25.6cm. each approx. ¥40,000
- 323 KUNIMASA IV: A miniature scenery model of the lieutenant colonel Fukushima Yasumasa's single-horse journey to Siberia, three sheets, complete, 1893--Good impressions and condition, margins very slightly soiled  
37.6x25cm. each approx. ¥40,000
- 324 UNSIGNED: Miniature scenery set of gymnastics, three sheets, complete, published by Ministry of Education, c.1880--Good impressions and condition, slightly soiled, stained, and damaged, lightly backed, ownership stamp  
35.5x25cm. each approx. ¥70,000
- 325 TOSHIMASA: Saigo Takamori and officers, triptych, 1877--Good impressions and condition, slightly creased on top  
37.4x25.2cm. each approx. ¥35,000
- 326 CHIKANOBU: Soldiers celebrating victory, a scene of Sino-Japan war, triptych, 1894--Good impressions and condition, center panel with a small hole, corners of left panel torn  
37x25.3cm. each approx. ¥18,000
- 327 TOSHIKATA: A scene of Sino-Japan war, triptych, 1894--Good impressions and condition, very slightly soiled and creased  
37x25.4cm. each approx. ¥28,000
- 328 KIYOCHIKA: A scene of Sino-Japan war, triptych, 1894--Good impressions and condition, a minor hole on left panel  
37.2x25cm. each approx. ¥25,000
- 329 KIYOCHIKA: A scene of Sino-Japan war, triptych, 1894--Good impressions and condition  
36.5x24.7cm. each approx. ¥30,000
- 330 TOSHIKI: A scene of Sino-Japan war, triptych, 1895--Good impressions and condition, right panel very slightly stained  
37x25cm. each approx. ¥20,000
- 331 KIYOCHIKA: Captain Asakawa and Second-cavalry Kimura Gemmatsu, from *Rikukai gunjin komei kagami* (Mirror of famous officers of army and navy), 1895--Good impression and condition, slightly damage along side edges  
36x24.3cm. ¥16,000
- 332 KOKYO: A scene of Japan-Russo war, triptych, 1904--Good impressions and condition, very slightly toned  
36.7x25.2cm. each approx. ¥38,000
- 333 KIYOCHIKA: *Nihon banzai hyakusen hyakusho* (Hurrah for Japan, One hundred selections, one hundred laughs), 1904--Good impression and condition  
37.2x25.5cm. ¥23,000
- 334 ITO SHINSUI: *Yuki no yoru* (Snowy night), published by Isetatsu, 1925--Good impression and condition, margins very slightly stained  
36.9x25.7cm. ¥140,000
- 335 ITO SHINSUI: *Jawa Jakaruta kogai* (Outskirt Jakarta, Java, Indonesia), 1943--Good impression and condition, margins very slightly stained  
37.7x27.5cm. ¥100,000
- 336 KOMORI SOSEKI: Goldfish, c.1926--Good impression, fine condition  
39x21.8cm. ¥55,000
- 337 KOBAYAKAWA KIYOSHI: *Kamiyui* (Dressing her hair), 1930--Good impression and condition, slightly toned  
40.1x25.3cm. ¥90,000
- 338 KOBAYAKAWA KIYOSHI: Yuagari (After a bath), c.1933--Good impression and condition  
40.8x25.8cm. ¥120,000
- 339 TSUCHIYA KOITSU: *Nikko, Goju no to* (Five-storied pagoda at Nikko), c.1930--Good impression and condition  
41.5x29cm. ¥200,000
- 340 KAWASE HASUI: Lake Towada, published by Bijutsusha, c.1927--Good impression and condition  
38.8x26.5cm. ¥300,000
- 341 KAWASE HASUI: *Akai yuhi* (The red setting sun), 1937--Fine impression and condition  
24x34.8cm. ¥300,000
- 342 KAWASE HASUI: *Kachidoki* (A victory Cheer), 1937--Fine impression, good condition, very slightly faded and toned  
24x33.8cm. ¥330,000
- 343 KAWASE HASUI: *Shiobara Hataori no ame* (Sudden rain at Shiobara Hataori), 1955--Good impression and condition  
48.5x20cm. ¥180,000
- 344 KAWASE HASUI: Toshogu, Ueno, late edition, published by Sakai, 1929--Good impression, fine condition  
40x27.8cm. ¥150,000
- 345 KAWASE HASUI: *Itako no yu* (Evening at Itako), late edition, 1930--Good impression, fine condition  
42.4x30cm. ¥90,000



## 通信販売のご案内

掲載品は特記なき限り真作であることを保障いたします。ご希望により詳細な状態をお知らせいたします。

日本国内への発送費用は書籍、複製映画類を除き無料です。海外への発送は実費を頂戴いたします。

品物のお引渡しは原則として全額支払後となります。

万一、購入された作品がお気に召さなかった場合の返品はご自由です。作品が原状にて7日以内に返送されることを原則といたします。

国内からのご送金は郵便振替、銀行振込、現金書留のいずれでも結構です。海外からの場合は国際郵便為替、または日本円での銀行送金でお願いいたします。送金手数料はお客様負担となります。又、主要クレジットカードでのお支払もお受けしております。その他のお支払方法につきましてはお問い合わせください。

商品の表示価格は消費税を含みます。

## CONDITIONS OF SALE

All lots, unless noted, are guaranteed genuine. Condition reports are available upon request.

Shipping can be arranged within Japan without charge (except books and reproductions). Shipping to overseas is extra.

Purchase will not be transferred until payment in full has been received.

Purchase can be returned in case of dissatisfaction. Refund to be made provide that the purchase is returned within 7 days in its original condition at purchaser's cost.

For orders within Japan, payments can be made by postal transfer, bank transfer, or registered mail. For those from overseas, payments to be made by international postal money order or bank transfer in Japanese Yen. Bank charges are at purchaser's cost. Payment by major credit cards is also accepted. Other payment methods can be consulted.





## 原書房

101-0051

東京都千代田区神田神保町2-3

Tel 03 5212 7801

Fax 03 3230 1158

ホームページ <http://www.harashobo.com>

eメール [ukiyoe@harashobo.com](mailto:ukiyoe@harashobo.com)

## HARA SHOBO

2-3 Kanda Jimbocho, Chiyoda-ku

Tokyo 101-0051 Japan

Tel +81 (0)3 5212 7801

Fax +81 (0)3 3230 1158

Website <http://www.harashobo.com>

e-mail [ukiyoe@harashobo.com](mailto:ukiyoe@harashobo.com)





## 原書房

101-0051

東京都千代田区神田神保町2-3

Tel 03 5212 7801

Fax 03 3230 1158

ホームページ <http://www.harashobo.com>

eメール [ukiyoe@harashobo.com](mailto:ukiyoe@harashobo.com)

## HARA SHOBO

2-3 Kanda Jimbocho, Chiyoda-ku

Tokyo 101-0051 Japan

Tel +81 (0)3 5212 7801

Fax +81 (0)3 3230 1158

Website <http://www.harashobo.com>

e-mail [ukiyoe@harashobo.com](mailto:ukiyoe@harashobo.com)