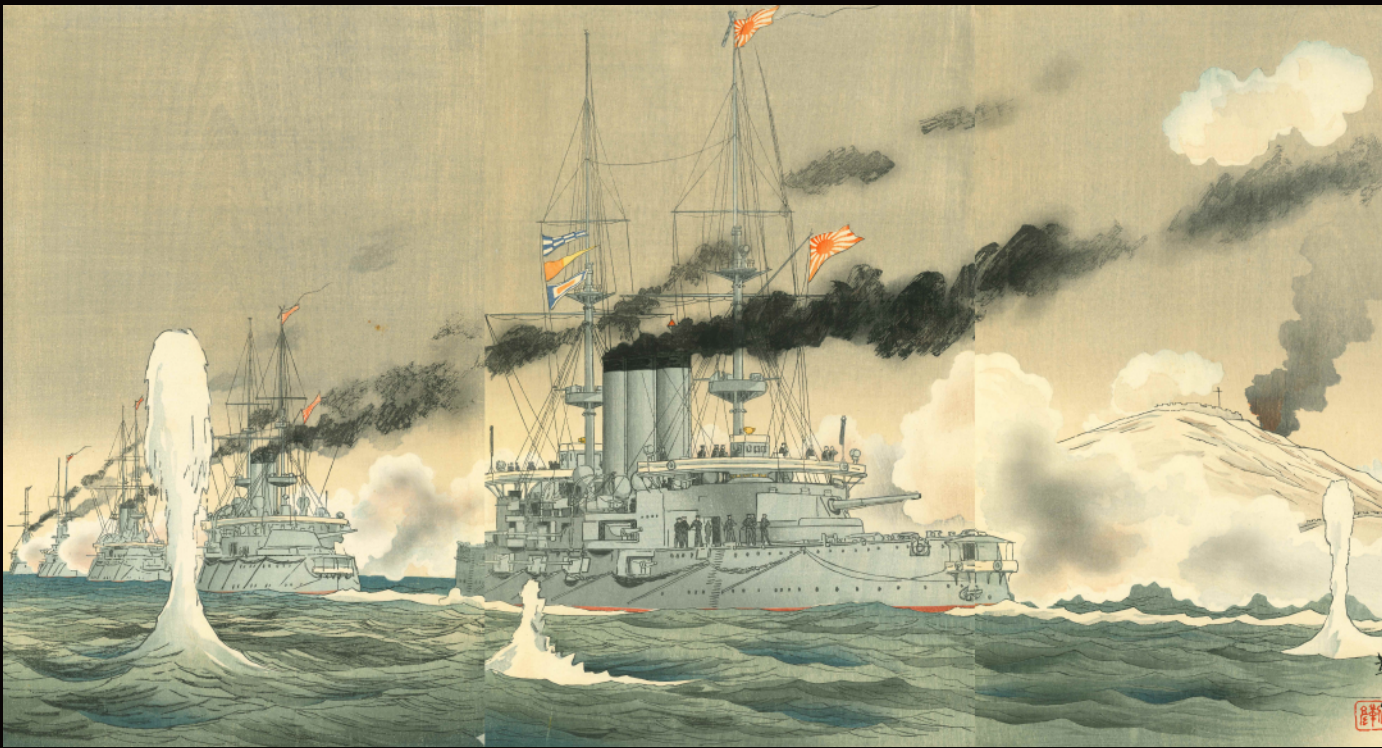


新収浮世絵版画目録 えどげいじゅつ
EDO GEIJUTSU -Catalogue of New Acquisitions



No. 96
2022.06

原書房
HARA SHOBO
Tokyo

原 書 房

<http://www.harashobo.com>

101-0051

東京都千代田区神田神保町2-3

Tel. 03 5212 7801

Fax. 03 3230 1158

eメール ukiyoe@harashobo.com

営業時間:

午前10時 - 午後6時

日・月・祭日 休業

郵便振替 00130-2-37578

みずほ銀行 九段支店

当座 0142732

三菱UFJ銀行 神保町支店

普通 0748571

三井住友銀行 神保町支店

普通 2003925

ゆうちょ銀行 ○一八支店

普通 9221851

当面の間、営業時間は以下の通りとなっております。

火～土曜 午前11時 - 午後5時

上記以外でご来店ご希望の場合はお問い合わせください。

Please note temporary gallery hours as below.

Tue - Sat 11am - 5pm

Otherwise by appointment

HARA SHOBO

<http://www.harashobo.com>

2-3 Kanda Jimbocho, Chiyoda-ku,

Tokyo 101-0051 Japan

Tel. +81 (0)3 5212 7801

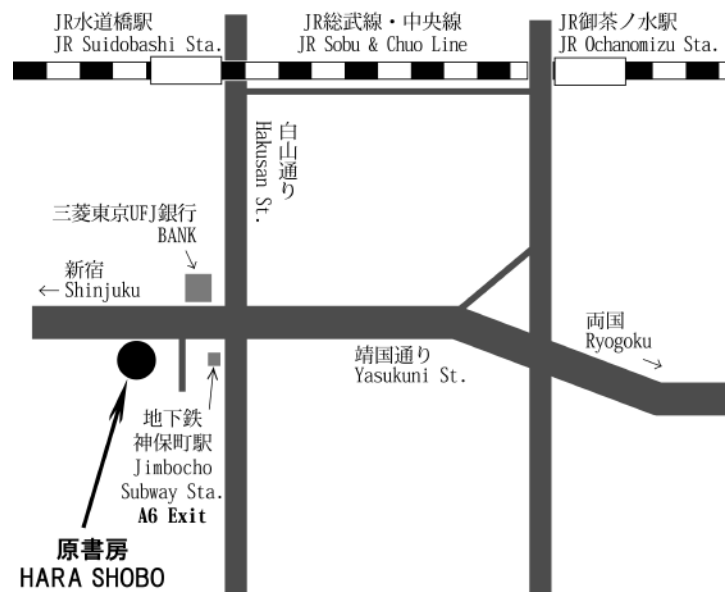
Fax. +81 (0)3 3230 1158

e-mail ukiyoe@harashobo.com

Gallery Hours:

Tuesday - Saturday, 10am - 6pm

Closed on Sundays, Mondays and Public Holidays



地下鉄神保町 (三田線・新宿線・半蔵門線): A6出口 徒歩1分


JR水道橋駅 (総武線): 東口 徒歩10分

JR御茶ノ水駅 (中央線・総武線): 西口 徒歩15分

Jimbocho Subway Station (Mita Line, Shinjuku Line, Hanzomon Line) Exit A6: 1min.

JR Suidobashi Station (JR Sobu Line) East Exit: 10mins.

JR Ochanomizu Station (JR Chuo Line, Sobu Line) West Exit: 15mins.



お客様各位

平素は格別のご愛顧を賜り厚く御礼申し上げます。新収浮世絵版画目録「えどげいじゅつ」96号をお送りいたします。

世界中で苦しい試練が続き、海外への旅行や買い付けもままならない昨今ですが、いくつかの良い仕入れの機会もいただき、日々の商いを続けることができるのはこの上ない喜びです。

休日などは神保町の街を歩く人も増えてきました。近所のカレー屋や喫茶店も以前のような行列ができています。外国人の姿も少しは増えた気がしますが、2万人のツアー旅行者が増えたところで当店の営業にはあまり変わりがないように思えます。

ギャラリーにはまだ整理のつかない作品もあり、徐々に出してまいります。ギャラリー自体はまだ概ね静かですので、休日を避けてご来店いただければ幸いです。

皆様のご注文、ご来店を心よりお待ちしております。

原書房 原敏之

Dear Customers

I am pleased to present our new catalogue "Edo Geijutsu", No. 96. Despite challenges the world is facing to, thanks to all clients, it is very fortunate that our business is still running well.

Streets in our neighbor became quite crowded during week-ends, as it used to be before COVID. Japanese government has also increased number of tourist entries, but traveling to Japan seems to be still difficult and effects of only 20,000 tourists, strictly with conductor, to our gallery may be very limited.

We look forward to welcome you to our gallery when our government fully opens up the door, Meanwhile, we look forward to receiving your orders.

Toshiyuki Hara
HARA SHOBO



1 子興 (長喜) (SHIKO [CHOKI])
 浄瑠璃見立八景 梅川忠兵衛の暮雪 寛政10年頃 (c.1798)
 刷良 保存極良 14.5x32cm. ¥220,000



2 歌麿 (UTAMARO)
 美人面相拾骸之図 楊枝
 享和頃 (c.1803) 刷良 保存並
 退色 汚 ヤケ 傷 裏打
 19x12.8cm. ¥30,000
 歌麿図典未載



4 春亭 (SHUNTEI)
 摺物 梅下美人 文政頃 (c.1818)
 刷良 保存良 少汚
 19.3x17cm. ¥70,000



5 英泉 (EISEN)
 摺物 美人画 文政頃 (c.1818)
 刷良 保存良 少汚 少シワ
 20.5x18.5cm. ¥55,000

3 歌麿 (UTAMARO)
 柱絵 虫籠売と美人
 享和頃 (c.1801)
 刷良 保存並 退色
 汚 傷 薄裏打
 61x11.5cm. ¥180,000



6 英泉 (EISEN)
 浮世逢妓 天保頃 (c.1830)
 刷良 保存良 極少シミ
 極少虫穴補修
 38x26cm. ¥150,000



7 国貞 (KUNISADA)
 江戸八景之内 愛宕
 文政頃 (c.1818) 刷良 保存良
 極少汚 弱中折
 38.5x26cm. ¥160,000



8 豊国二代 (TOYOKUNI II)
 松葉屋内松山 ふたば こまつ
 文政頃 (c.1818) 刷並 保存良
 右下極少シミ 少トリム
 34.8x23.5cm. ¥23,000



9 国芳 (KUNIYOSHI)
 女今川姿合 二
 弘化頃 (c.1844)
 刷良 保存良 極少汚
 35.5x24.8cm. ¥30,000



10 豊国三代 (TOYOKUNI III)
 十二支のうち 寅
 弘化頃 (c.1844)
 刷良 保存良
 極少汚 極少シミ
 37.5x25.2cm. ¥55,000



11 豊国三代 (TOYOKUNI III)
 江戸名所百人美女 小石川 牛天神
 安政4年 (1857)
 刷良 保存良 極少汚 裏打
 35.5x24cm. ¥30,000

12 豊国三代 (TOYOKUNI III)
能狂言之内 羽衣の松 3枚続 文久2年 (1862)
刷極良 保存極良 但綴穴
各約37.7x26cm. ¥230,000

「浮世絵 一竿百趣味」つり人社 2006年, p.76
Illustrated in *Ukiyo-e Ikkan hyakushu*
(Tsuriribito-sha, 2006), p.76



13 豊国三代 (TOYOKUNI III)
睦月 3枚続 嘉永頃 (c.1848)
刷良 保存良 弱中折
各約37.5x25.5cm. ¥270,000



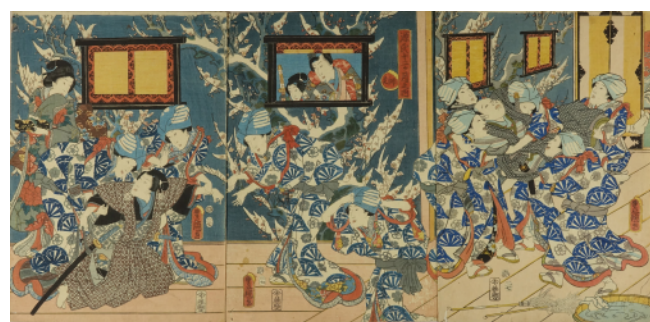
14 豊国三代 (TOYOKUNI III)
吾妻源氏雪月花之内 花 3枚続 安政元年 (1854)
刷良 保存良 極少汚 極少虫穴及縁傷補修 裏打
各約36x25.5cm. ¥45,000



15 豊国三代 (TOYOKUNI III)
十二月之内 文月 廿十六夜待 3枚続 安政元年 (1854)
刷良 保存良 少汚 少傷 極少虫穴及縁傷補修 裏打
各約36x25cm. ¥65,000



16 豊国三代 (TOYOKUNI III)
当世源氏六条かよひ 3枚続 安政3年 (1856)
刷良 保存良
各約37x25.2cm. ¥60,000



17 豊国三代 (TOYOKUNI III)
源氏十二月之内 師走 3枚続 安政4年 (1857)
刷良 保存良 極少シミ 極少虫穴
各約36.5x25.5cm. ¥50,000



19 芳年 (YOSHITOSHI)
江戸紫花形源氏 つくだじま夜景
3枚続 慶応2年 (1866)
刷良 保存良 極少虫穴補修
各約37x25.4cm. ¥400,000



21 吟光 (GINKO) 貴女裁縫之図 3枚続 明治12年 (1879)
刷良 保存良 少シミ 少ヤケ 各約36.5x25cm. ¥110,000



18 国周 (KUNICHIKA)
葉うた虎之巻 廿五 品川屋
文久3年 (1863)
刷良 保存良 極少シミ 下縁トリム
36x24.5cm. ¥18,000



22 国明 (KUNIAKI)
伝聞民之喜 3枚続 明治10年 (1877)
刷良 保存良 極少汚 極少虫穴
各約37.5x26cm. ¥18,000



23 周延 (CHIKANOBU) 新年御歌撰之図 3枚続
明治10年 (1877) 刷良 保存良 極少汚 中図極少シミ 弱中折
各約37x25cm. ¥35,000



24 房種 (FUSATANE) 皇太后宮様皇后宮様紅葉遊覧之図
3枚続 明治20年頃 (c.1887) 刷良 保存良 下角極少シミ
各約37.7x25.5cm. ¥15,000



25 周延 (CHIKANOBU) 吹上御庭釣橋遠景 3枚続
明治13年 (1880) 刷良 保存良 極少穴 弱中折
各約37x25.4cm. ¥28,000



26 周延 (CHIKANOBU) 奥御殿猿曳之図 3枚続
明治20年頃 (c.1887) 刷良 保存並 シミ ヤケ 少傷補修
各約36x24.5cm. ¥18,000

20 芳年 (YOSHITOSHI)
 奥州安達がはらひとつ家の図
 竪2枚続 明治18年 (1885)
 刷極良 保存極良
 各約37.5x25.5cm.
 ¥2,200,000





27 周延 (CHIKANOBU)
踏舞会 上野桜花観遊ノ図 3枚続
明治20年 (1887)
刷良 保存良 極薄シミ
各約37.5x25.3cm.
¥180,000



28 周延 (CHIKANOBU) 女礼式略図 3枚続
明治25年 (1892) 刷良 保存良 右図極少シミ 薄裏打
各約36x24cm. ¥38,000



29 周延 (CHIKANOBU) 千代田之大奥 お庭の夜桜 3枚続
明治29年 (1896) 刷良 保存良 少退色 少ヤケ 左図縁極少シミ 薄裏打
各約36.1x25cm. ¥40,000



30 周延 (CHIKANOBU) 婦人諸礼式の図 屠蘇 3枚続
明治28年 (1895) 刷良 保存良 少退色 極少シミ
各約37.5x25cm. ¥28,000



31 周延 (CHIKANOBU) 美人観菊之図 3枚続
明治31年 (1898) 刷良 保存良 少シミ
各約35.5x23.5cm. ¥30,000



32 周延 (CHIKANOBU)
教育幼稚園之図 3枚続 明治32年 (1899)
刷良 保存良 極少汚 極少シワ
各約37.1x24.5cm. ¥55,000

33～36 年方 (TOSHIKATA)
三十六佳撰 明治24～26年 (1892-94)
特記なき限り刷良 保存良 各約37x25cm.



33 遊山
縁極少シミ ¥13,000



34 茸狩
極少シミ ¥13,000



35 侍女 左縁極少シミ
極少シワ ¥13,000



36 芝居見物
縁極少汚及 シミ ¥13,000

37～44 年方 (TOSHIKATA) 三十六佳撰 明治24～26年 (1892-94) 特記なき限り刷良 保存良 各約37x25cm.



37 汐干
極少シミ ¥13,000



38 雪見
¥15,000



39 辻君
¥13,000



40 菊見
極少シミ ¥13,000



41 虫の音 縁極少汚
極少シワ ¥13,000



42 雨やどり 極少シミ
極少酸化傷 ¥13,000



43 洗髪 極少汚
極少シワ ¥10,000



44 旅路
左縁極少汚及シミ ¥13,000



45 国貞 (KUNISADA)
常山五郎吉 (山形県)
弘化頃 (c.1844)
刷良 保存良
38x25.5cm. ¥80,000



46 豊国三代 (TOYOKUNI III)
秀ノ山雷五郎 (宮城県)
弘化頃 (c.1844) 刷良 保存良
極少汚 極少虫穴
37.9x25.8cm. ¥35,000



47 豊国三代 (TOYOKUNI III)
荒岩亀之助 (鳥取県)
嘉永7年 (1854)
刷良 保存良 極少虫穴 裏打
36.5x25cm. ¥25,000



48 春斎 (SHUNSAI)
勧進大相撲土俵入図 2枚続 明治30年 (1897)
刷良 保存並 少汚 少傷 折
24.8x54cm. ¥13,000

49 国郷 (KUNISATO)
両国大相撲繁栄之図 3枚続
嘉永6年 (1853)
刷良 保存良 極少虫穴
各約37.3x26cm. ¥300,000



50～55 春潮 (SHUNCHO) 春画 寛政頃 (c.1790) 特記なき限り刷良 保存良 少汚



50 好色図会十二候
保存並 退色 汚 傷補修 折
25x37.8cm. ¥70,000



51 好色図会十二候
退色 少シミ 少シワ
26.3x38.6cm. ¥90,000



52 男女色交合之糸
少シワ 中折部少補修 トリム
25x34.2cm. ¥60,000



53 男女色交合之糸
少シワ 中折部少補修 色差 トリム
25x35cm. ¥60,000



54 男女色交合之糸
少シワ 中折部少補修
25x37.7cm ¥70,000



55 男女色交合之糸
少シワ 中折部少補修
25x37.6cm. ¥70,000

56～64 英山 (EIZAN) 絵合錦街抄 文化12年 (1815)

各約26x38cm. 刷良 保存良 少汚 中折部少傷 図版番号は日文研「艶本資料データベース」による



56 第1図 ¥55,000



57 第2図 ¥55,000



58 第4図 ¥55,000



59 第5図 ¥60,000



60 第6図 ¥55,000



61 第7図 ¥55,000



62 第8図 ¥55,000



63 第9図 ¥55,000



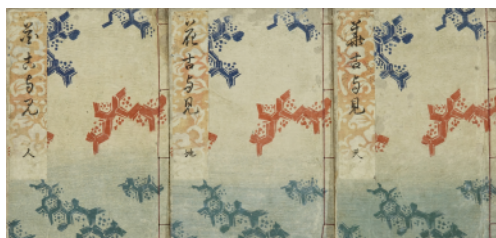
64 第11図 ¥55,000



65 国貞 (KUNISADA)

艶紫娛拾餘帖 3冊揃

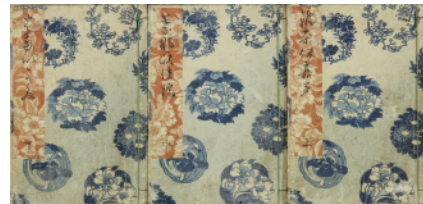
天保頃(c.1830)刊 原装 元表紙 元題箋
刷極良 保存良 極少指汚 極少虫穴 一部酸化シミ
各約25.7x18cm. ¥3,800,000



66 国芳 (KUNIYOSHI)

華古与見 3冊揃 天保6年(1835)刊

原装 元表紙 元題箋 表紙少汚 天の巻極少虫穴
各22x15.5cm. ¥1,300,000



67 国芳 (KUNIYOSHI)

波奈伊嘉多 3冊揃

天保7年(1836)刊 原装 元表紙 元題箋

極少指汚 一部極少シミ 表紙極少汚

各22.3x15.5cm. ¥950,000



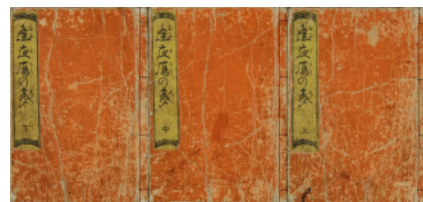
68 歌麿 (UTAMARO)

会本都功密那倍 3冊揃

寛政10年(1798)刊 原装 元表紙 元題箋

表紙極少傷 少指汚

各21.5x15cm. ¥650,000



69 豊国 (TOYOKUNI)

逢夜雁之声 3冊揃

文政5年(1822)刊 原装 元表紙 元題箋

少指汚 表紙少傷

各22x15.5cm. ¥950,000





70 北斎 (HOKUSAI)
春興五十三駄之内 川崎 享和頃 (c.1801)
刷極良 保存極良 但左上極少虫穴補修
13x17.8cm. ¥80,000



71 北斎 (HOKUSAI)
春興五十三駄之内 神奈川 享和頃 (c.1801)
刷極良 保存極良
13x17.7cm. ¥90,000



72 北斎 (HOKUSAI)
東海道五十三次 (絵本駅路鈴)
金谷 文化頃 (c.1804)
刷良 保存良 少汚 裏打
22.5x16.5cm. ¥140,000



73 英泉 (EISEN)
江戸八景 日本橋の晴嵐
弘化頃 (c.1844)
刷良 保存良 極少汚 少虫穴補修
25.5x37.1cm. ¥250,000

74 広重 (HIROSHIGE)
東海道五十三次の内 浜松
蔦屋版 嘉永頃 (c.1848)
刷良 保存良 裏にテープ残
18x24.8cm. ¥35,000



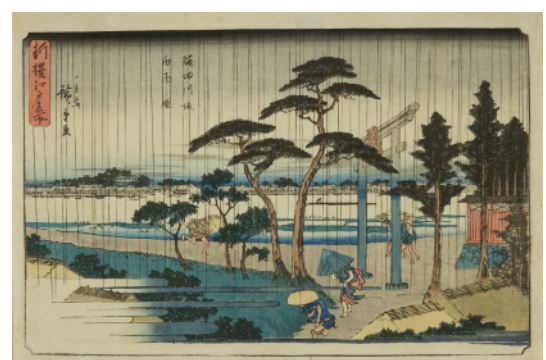
75 広重 (HIROSHIGE)
東海道五十三次の内 浜松
蔦屋版 嘉永頃 (c.1848)
刷良 保存良 極少汚
裏にテープ残
17.9x25cm. ¥38,000



76 広重 (HIROSHIGE)
隸書東海道五十三次 川崎 嘉永頃 (c.1848)
刷良 保存良 極少汚 少虫穴補修 弱中折 少トリム
23.6x36cm. ¥280,000



77 広重 (HIROSHIGE)
江都名所 目黒不動詣 佐野喜版 天保3年頃 (c.1832)
刷良 保存良 極少汚 26x37.6cm. ¥100,000



78 広重 (HIROSHIGE)
新撰江戸名所 隅田川堤白雨之図 天保10年頃 (c.1839)
刷良 保存良 極少虫穴 24.8x36.7cm. ¥220,000



79 広重 (HIROSHIGE)
名所江戸百景
五百羅漢 さざみ堂
安政3年 (1856)
刷極良 保存良
36.5x24.8cm. ¥450,000



80 広重 (HIROSHIGE)
名所江戸百景 よし原日本堤 安政4年 (1857)
刷良 保存良 極少虫穴 裏打剥離跡
36x24.3cm. ¥450,000



81 広重 (HIROSHIGE)
東都名所 あすかやま花盛
天保10年頃 (c.1839)
刷良 保存良 縁少シミ 弱折
23.5x36cm. ¥38,000

82 広重二代 (HIROSHIGE II)
諸国六玉川 6枚揃 文久3年 (1863)
刷良 保存良 一部極少シミ
各約37.1x25.5cm. ¥300,000



83 貞虎 (SADATORA) 鎌倉七里ヶ浜より江の島遠望 3枚続
天保頃 (c.1833) 刷良 保存良 極少虫穴 左図少汚及少傷
各約38.2x26cm. ¥350,000



84 芳虎 (YOSHITORA)
東都名所八景之内 永代橋帰帆
安政元年 (1854)
刷良 保存良 極少汚
25.2x37cm. ¥38,000



85 芳員 (YOSHIKAZU)
五国異人横濱上陸図 3枚続 文久元年 (1861)
刷並 保存良 少汚 端折
各約36.4x25.2cm. ¥80,000



86 芳員 (YOSHIKAZU)
横濱異人屋敷之内 3枚続 文久元年 (1861)
刷良 保存良 端折
各約36.3x25.3cm. ¥120,000



87 芳虎 (YOSHITORA)
万国名勝盡競之内 大清南京府市坊 3枚続 文久2年 (1862)
刷良 保存良 弱折
各約36.3x25cm. ¥70,000



88 芳虎 (YOSHITORA)
万国名勝盡競之内 英吉利龍動海口 3枚続 文久2年 (1862)
刷良 保存良 端折
各約36.5x25.5cm. ¥95,000



89 芳虎 (YOSHITORA)
英吉利人 文久3年 (1863)
刷並 保存良
36.3x24cm. ¥30,000



90 芳虎 (YOSHITORA)
魯西亜人 文久3年 (1863)
刷並 保存良 少汚
36.4x25cm. ¥25,000



91 芳虎 (YOSHITORA)
魯西亜人 文久3年 (1863)
刷並 保存良 極少汚
36.3x24.8cm. ¥30,000



92 芳虎 (YOSHITORA)
清朝人 文久3年 (1863)
刷並 保存良
36.1x24cm. ¥25,000



93 長崎版画 (NAGASAKI SCHOOL)
大清人納涼之図
刷良 保存良 極少汚
31.4x21.5cm. ¥70,000

94 年基 (TOSHIMOTO)
大日本名所写真
北海難風 東京柳橋雨
明治10年頃 (c.1877)
刷良 保存良 少シ汚
37.4x25.5cm. ¥50,000

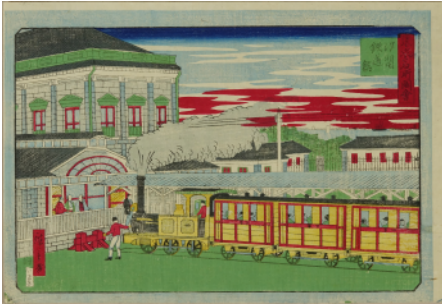
95 年基 (TOSHIMOTO)
大日本名所写真
大阪自安寺夜景
大阪生魂招裏社曙
明治10年頃 (c.1877)
刷良 保存良 上部少傷
37.2x25cm. ¥50,000



94



95



96 広重三代 (HIROSHIGE III)
東京名所図会 汐留鉄道館 明治7年 (1874)
刷並 保存良 極少破補修
25x37.6cm. ¥15,000



97 広重三代 (HIROSHIGE III)
大日本物産図会 武蔵国 浅草海苔製図
明治10年 (1877)
刷良 保存良 極少シミ 中折
17.5x24cm. ¥20,000



98 広重三代 (HIROSHIGE III)
大日本物産図会 淡路国 鯛ブリ網之図
明治10年 (1877)
刷良 保存良 左下少破 裏打
17x23.8cm. ¥12,000



99 広重三代 (HIROSHIGE III)
大日本物産図会 淡路国 鯛網之図
明治10年 (1877) 刷良 保存良 中折
17.5x23.8cm. ¥14,000



100 広重三代 (HIROSHIGE III)
日本地誌略図
筑前国箱崎之図/筑後川屏風山景
明治9年 (1876)
刷良 保存良
37x25.4cm. ¥25,000



101 清親 (KIYOCHIKA)
東京名所 江戸橋夕暮富士 明治12年 (1879)
刷極良 保存極良 但縁極少虫穴及極少汚
24.7x36.7cm. ¥450,000



102 清親 (KIYOCHIKA)
東京名所 柳原夜雨 明治14年 (1881)
刷良 保存良 少退色 少汚 中折
24.6x34.8cm. ¥150,000



103 清親 (KIYOCHIKA)
東京名所 赤坂紀伊国坂 明治13年 (1880)
刷極良 保存極良
24.9x36.5cm. ¥350,000



104 清親 (KIYOCHIKA)
東京名所 隅田川枕橋前 明治13年 (1880)
刷良 保存良 少汚 極少ヤケ 中折
24.1x34.4cm. ¥60,000



105 清親 (KIYOCHIKA)
東京名所 九段馬かけ
明治14年 (1881)
刷良 保存良 右縁少シミ
左縁少トリム 中折
23.5x32.5cm. ¥80,000

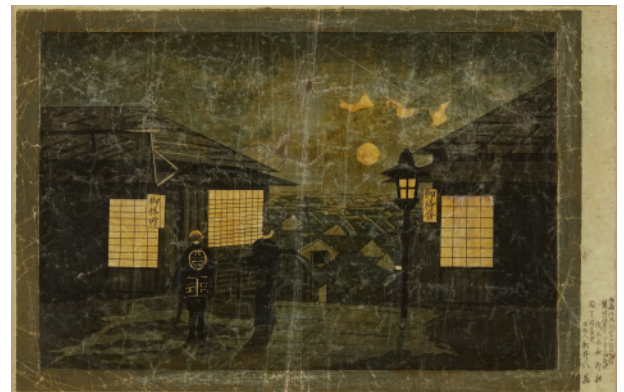


106 清親 (KIYOCHIKA)
武蔵百景之内 江戸見坂
明治17年 (1884)
刷極良 保存極良
36x24.5cm. ¥150,000

107 柳村 (RYUSON)
ハツ山之景 明治13年 (1880)
刷良 保存良 中折 綴穴
23.8x35cm. ¥1,500,000



109 玉英 (GYOKUEI)
東京湾より富士を見る図 団扇絵
明治20年頃 (c.1889)
刷良 保存良 極少汚
約25x24.8cm. ¥7,000



108 柳村 (RYUSON)
湯嶋之景 明治13年 (1880)
ニス引 刷良 保存良
少汚 シワ 裏打
23.5x36cm. ¥300,000



110 国利 (KUNITOSHI)
富国養蚕の図 5枚
明治14年 (1881)
刷良 保存良 極少汚
極少虫穴補修 端折
各約36x24.8cm. ¥60,000



111 西尾慶治 (NISHIO KEIJI)
加州金澤製糸場之図 3枚続
明治7年頃 (c.1874)
刷良 保存良 極少傷
中図極少シミ 蔵印
各約34.5x23.8cm. ¥500,000



112 年忠 (TOSHITADA)
東京名所吾妻橋鉄橋之全図 3枚続 明治20年 (1887)
刷良 保存良 極少汚 極少シミ 極少傷 中折
各約36.5x25cm. ¥55,000



113 周延 (CHIKANOBU)
上野不忍競馬ノ図 3枚続 明治18年 (1885)
刷良 保存良 極少汚 右図酸化ヤケ部穴極少補修
各約37x25cm. ¥35,000



114 探景 (TANKEI)
観兵式御幸図 3枚続 明治18年 (1885)
刷良 保存良 折
各約36.7x25.4cm. ¥45,000



115 探景 (TANKEI)
明治天皇桜田門前之図 3枚続 明治21年 (1888)
刷良 保存良 弱中折
各約36.6x25.5cm. ¥45,000



116 延一 (NOBUKAZU)
帝国議会議事堂之図 3枚続 明治23年 (1890)
刷良 保存良 左下角切
各約37.1x24.8cm. ¥18,000



117 小国政 (KOKUNIMASA)
五五大典 銀婚御式之図 3枚続 明治27年 (1894)
刷良 保存良
各約36.5x24.8cm. ¥15,000



118 楊斎 (YOSAI)
二重橋楠公銅像 3枚続 明治32年 (1899)
刷良 保存良 極少シミ 極少虫穴 左図少破補修
各約37x25cm. ¥13,000



119 たか雄 君は今...
紙薄 少トリム
¥50,000



120 祇園まち
少ヤケ 極少シミ 少トリム
¥60,000



121 稲葉山の月
極少ヤケ
¥80,000



123いつくしまの月 室遊女
少虫穴補修
¥80,000



122 朝野川晴雪月 孝女ちか子
極少ヤケ 少トリム
¥300,000



124 竹生島月 経正
極少ヤケ 極少シミ 少トリム
¥80,000



125 神事残月 旧山王祭
下縁少トリム
¥90,000



126 心観月 手友梅
薄裏打 ¥60,000



127 高倉月 長谷部信連
極少ヤケ 極少汚 少トリム
裏打残 ¥50,000



128 垣間見の月 かほよ
極少シミ 極少ヤケ 少トリム
裏打 ¥70,000



129 藤原公任 しらしらと...
極少汚 極少ヤケ 少トリム
¥50,000



130 赤染衛門 やすらはで...
極少穴 少トリム
¥70,000



131 稲むらが崎の明ほの月
少汚 極少シミ 左縁折 下縁トリム
¥50,000

119～131 芳年 (YOSHITOSHI)
月百姿 明治18～20年 (1885-87)
特記なき限り刷良 保存良 各約36x24cm.

132～156
 芳年 (YOSHITOSHI)
 月百姿
 明治19～25年 (1885-92)
 特記なき限り刷良 保存良
 各約36x24cm.



132 賊巢の月 小碓皇子
 トリム
 ¥60,000



133 淮水月 伍子胥
 極少シミ 少トリム 薄裏打
 ¥60,000



134 五節の命婦
 上縁極少汚
 ¥60,000



135 西宮夜静百花香王昌齡
 ¥70,000



136 前田玄以 常にこそ...
 角切
 ¥60,000



137 読書の月 子路
 右縁極少シミ 角切
 ¥50,000



138 源頼政 ほととぎす...
 極少シミ 角切
 ¥60,000



139 月明林下美人来
 少シミ 少ヤケ 薄裏打
 ¥80,000



140 堅田浦の月 斉藤内蔵介
 薄裏打
 ¥80,000



141 世尊寺の月 小將義孝
 極少ヤケ 右縁極少虫穴
 ¥50,000



142 貞観殿月 源経基
 少汚 少シミ 少ヤケ 少トリム
 ¥40,000



143 赤壁月 角にピン穴
 ¥50,000



144 雨中月 児嶋高德
 少シミ 角切 ¥70,000



145 豊臣秀次 おもひきや...
 少シミ 角切 右下極少傷
 ¥70,000



146 足柄山月 義光
 極少汚 極少シミ 極少ヤケ
 少トリム ¥50,000



147 明石義太夫 弓取りの...
極少シミ 極少ヤケ 少トリム
¥60,000



148 孤家月
極少ヤケ 左縁トリム
¥120,000



149 平忠度 かしかまし...
角切
¥60,000



150 つきの発明 宝蔵院
¥80,000



151 翁 三日月の...
極少汚 極少シミ トリム 蔵印
¥40,000



152 水木辰の助 桜さく...
極少汚 角切
¥80,000



153 姥捨月
極少汚 極少ヤケ
¥50,000



155 猿楽月
虫穴補修 裏打
¥30,000

156 いてしほの月
少トリム
¥50,000



157 芳年 (YOSHITOSHI)
英名二十八衆句 遠城喜八郎
慶応3年 (1867)
刷良 保存良 極少虫穴補修
縁少傷 裏にテープ残 弱堅折
36.5x24.5cm. ¥70,000



158 芳幾 (YOSHIKU)
英名二十八衆句 遠城治左衛門
慶応3年 (1867)
刷良 保存良 薄裏打 少トリム
35x24cm. ¥80,000



154 むさしの月
少退色
¥300,000

159～161 国芳 (KUNIYOSHI) 七ついろは東都富士尽 嘉永5年 (1852)

特記なき限り刷良 保存良 各約36x25cm.



159 の 高なわおきの富士
野狐平 左下少シミ
¥35,000



160 む 浅草おく山の富士
夕霧 少汚 右下極少シミ
¥30,000



161 を 御厩河岸の富士
遠藤武者
¥38,000



162 国芳 (KUNIYOSHI)
「高木織右武実録」
嘉永元年 (1848) 8月中村座
刷良 保存良 少虫穴補修
左縁折補修 下縁トリム
36.6x25.3cm. ¥18,000



163 国貞 (KUNISADA) 「菊月千種の夕暎」 2枚続
文政12年 (1829) 9月 河原崎座
刷良 保存良 極少汚 綴穴
各約37.6x25.5cm. ¥25,000



164 豊国三代 (TOYOKUNI III)
梅暦見立八勝人 男達鳳巾の播蔵
安政6年 (1859) 刷良 保存良
37.8x25.5cm. ¥35,000



165 豊国三代 (TOYOKUNI III)
東海道五拾三次之内 土山 阿漕平治
嘉永5年 (1852) 刷良 保存良
左縁傷 少トリム 34.3x23.9cm. ¥13,000



166 豊国三代 (TOYOKUNI III)
「仮名手本硯高島」 3枚続 安政5年 (1858) 5月 市村座
刷極良 保存良 上角極少傷
各約37.4x25.5cm. ¥50,000

167～171
豊国三代 (TOYOKUNI III)
今様押絵鏡
特記なき限り 刷極良 保存良
各約39x27cm. ¥50,000



167 沢井又五郎 中村歌雀
極少ヤケ ¥50,000



168 三浦屋九重 初世市川新車
¥55,000



169 安達昌伯 坂東村右衛門
保存極良 ¥45,000



170 茶屋廻り三吉 中村子雀
極少シミ ¥45,000



171 嶋川太兵衛 二世浅尾与六
極少シミ ¥45,000

172 豊国三代 (TOYOKUNI III)
見立十人豊国一世一代
屋久ら水滸傳 3枚続 文久3年 (1863)
刷良 保存良 極少汚 綴穴補修
各約36x25.5cm. ¥400,000



173 国周 (KUNICHIKA)
河原崎三升 沢村田之助
文久3年 (1863)
刷良 保存良 極少汚
35.7x25cm. ¥80,000



174 国周 (KUNICHIKA)
見立白浪八景 8枚揃 慶応元年 (1865)
刷良 保存良 極少汚 一部極少虫穴補修 一図少シワ
各約37.5x25.5cm. ¥550,000



176 国周 (KUNICHIKA)
富士三十六景 駿河三保
五節天女 岩井半四郎
明治9年 (1876)
刷良 保存良 極少汚
36.6x24.5cm. ¥88,000

同図で題名が「見立富士三十六景」
の異版あり。
当作品の方が早い刷と思われる。



175 国周 (KUNICHIKA)
「初雁芸者評判」3枚続 明治4年 (1871) 8月 守田座
刷良 保存良 左図極少虫穴 各約36.9x25cm. ¥20,000



177 国周 (KUNICHIKA)
「梅春俠客御所染」3枚続 明治20年 (1887) 2月 千歳座
刷良 保存良 少シワ 各約37x25cm. ¥15,000



178 周延 (CHIKANOBU)
「茶臼山凱歌陣立」3枚続 明治13年 (1880) 11月 新富座
刷良 保存良 上角極少シミ 各約37x24.8cm. ¥15,000



180 芳幾 (YOSHIKU)
俳優写真鑑 白拍子花子 中村芝翫
明治3年 (1870) 刷良 保存良
下縁トリム 薄裏打 ニス引
36x24cm. ¥160,000



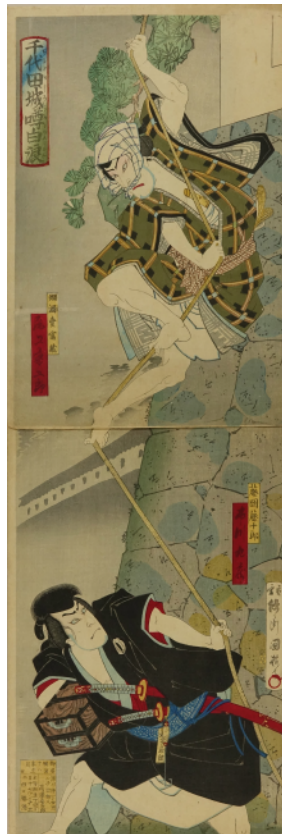
182 国政四代 (KUNIMASA IV)
「酒戦場愛宕連歌」3枚続 明治20年 (1887)
刷良 保存良 極少汚 縁極少傷
各約36.7x24.5cm. ¥15,000



184 国周 (KUNICHIKA)
「黄八丈大岡政談」3枚続 明治26年 (1893)
刷良 保存並 少汚 少ヤケ 少傷
各約36.3x25.3cm. ¥18,000



185 国周 (KUNICHIKA)
明治座新狂言 大同江激戦場 3枚続
明治27年 (1894) 10月 明治座
刷良 保存良 少酸化シミ及傷
各約37.2x25cm. ¥18,000



181 国梅 (KUNIUME)
千代田城噂白浪
豎2枚続 明治18年 (1885)
刷良 保存良 極少汚
極少シミ 少ヤケ
各約37x25cm. ¥150,000



183 国政四代 (KUNIMASA IV)
「籠釣瓶花街酔醒」3枚続 明治21年 (1888) 9月 千歳座
刷良 保存良 極少汚 各約37x25cm. ¥15,000



186 作者不詳
(ARTIST UNKNOWN)
版木 宝船 彫工 亀二
29x41x2cm. ¥60,000



187 芳虎 (YOSHITORA)
七福即生開運出世 金のなる木
刷良 保存良 少汚 ヤケ
35.8x24.2cm. ¥20,000



188 国貞 (KUNISADA)
七福即生 開運出世
金のなる木 縦2枚続
弘化頃 (c.1844)
刷良 保存良 極少汚
極少シミ 少ヤケ
各約33.7x22.8cm. ¥35,000



189 暁斎 (KYOSAI)
大黒とお福 縦2枚続
明治20年頃 (c.1887)
刷極良 保存良
各約37.4x26.5cm.
¥90,000



190 暁斎 (KYOSAI)
暁斎楽画 十号 明治7年 (1874)
刷良 保存良 極少汚
37.6x24.7cm. ¥230,000



191 芳年 (YOSHITOSHI)
東京開化狂画名所
墨堤三圍社野狐の愉快
招魂社馬のり名人
明治14年 (1881)
刷良 保存極良
36.6x24.5cm. ¥25,000



192 国芳 (KUNIYOSHI)
三国拳 嘉永頃 (c.1848)
刷良 保存良 極少汚
極少シミ 縁少傷
37.9x25.9cm. ¥50,000



193 芳艶 (YOSHITSUYA)
流行裡けん 文久元年 (1861)
刷良 保存良 極少汚 極少虫穴
37.8x25.8cm. ¥50,000



194 芳幾 (YOSHIKU)
はつけん 文久元年 (1861)
刷良 保存良
37x25.3cm. ¥50,000



195 無款 (UNSIGNED)
伊勢大神宮のおたすけ 安政2年 (1855)
刷良 保存良 少汚 少傷
24.2x36cm. ¥80,000



196 無款 (UNSIGNED)
ひやかし鯉 安政2年 (1855)
刷良 保存良 少汚 縁少傷
36.5x25.5cm. ¥90,000



197 無款 (UNSIGNED)
万歳楽身の用心 安政2年 (1855)
刷良 保存並 汚 傷
36.8x24.7cm. ¥80,000



198 無款 (UNSIGNED)
大鯨江戸の賑ひ
安政2年 (1855)
刷良 保存良
37x24.2cm. ¥330,000



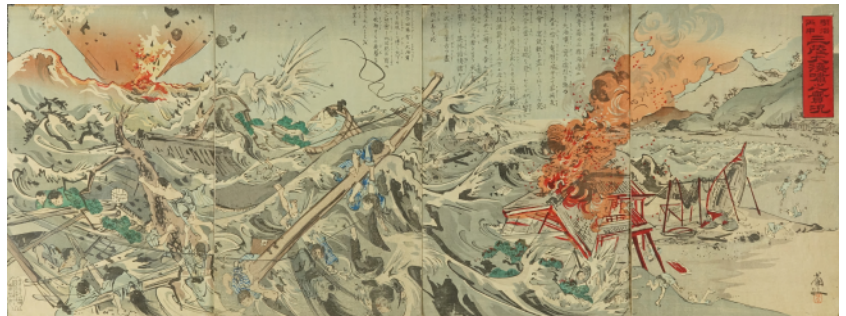
199 無款 (UNSIGNED)
風流葉唄尽 安政2年 (1855)
刷良 保存良
36.4x24.4cm. ¥90,000



200 無款 (UNSIGNED)
名石十歳羽 男之助せりふ
安政2年 (1855)
刷良 保存並 少汚
少シミ 少傷
36.7x24.5cm. ¥80,000



203 芳年 (YOSHITOSHI)
郵便報知新聞
第832号 大鯨見世物
明治8年頃 (c.1875)
刷良 保存良 綴穴 右縁トリム
35.8x23.8cm. ¥98,000



201 小国政 (KOKUNIMASA) 明治丙申三陸海嘯之実況 4枚続
明治29年 (1896) 刷良 保存良 極少シミ 縁少傷 少トリム
各約35.2x23.5cm. ¥260,000



202 芳年 (YOSHITOSHI)
郵便報知新聞 第491号
明治7年 (1874)
刷良 保存良
37.3x25cm. ¥20,000



204 芳年 (YOSHITOSHI)
近世人物誌 やまと新聞
附録第十 錦織剛清
明治20年 (1887)
刷良 保存良 極少汚
37x25.2cm. ¥18,000

205~207
芳幾 (YOSHIIKU)
東京日々新聞
明治7頃 (c.1874)
刷良 保存良
各約36.5x24.5cm.



205 322号
¥20,000



206 849号
¥20,000



207 940号
¥20,000



208 豊国三代 (TOYOKUNI III)
新板百人一首むべ山雙六 十返舎一九校
 大黒屋平吉板 2枚続 弘化頃 (c.1844)
 刷良 保存並 汚 シミ 傷
 52x75cm. ¥50,000



209 芳幾 (YOSHIKIKU)
春あそび辻占寿吾六 万延元年 (1860)
 刷良 保存並 少汚 少シミ 少傷 裏打
 59.5x71.5cm. ¥18,000



210 芳員 (YOSHIKAZU)
源平ふりわけ雙六 袋付 3枚 万延元年 (1860)
 刷良 保存並 少汚 傷
 36x72cm. ¥30,000



212 芳虎 (YOSHITORA)
魁戦場出陣寿語録 袋付 4枚揃 慶応2年 (1866)
 刷良 保存良 少汚 少傷
 49x72cm. ¥50,000



211 国周 (KUNICHIKA)
山門豪傑双録 6枚続 慶応元年 (1865)
 刷良 保存良 少退色 少ヤケ 少傷補修 裏打
 90x108cm. ¥150,000



213 国周 (KUNICHIKA)
東海道五十三駅滑稽道中雙六 袋付 5枚 元治元年 (1864)
 刷良 保存良 少汚 少シミ 少傷
 60x71cm. ¥70,000



214 春暁 (SHUNGYO)
自転車競争双六 コマ(自転車)・袋付 明治21年 (1888)
 刷良 保存良 袋は裏面に貼付
 37.3x50cm ¥120,000



215 周延 (CHIKANOBU)
女禮式教育壽語録 袋付
3枚続 明治21年 (1888)
刷良 保存良
極少シミ 袋少汚
各約74x49.5cm. ¥60,000



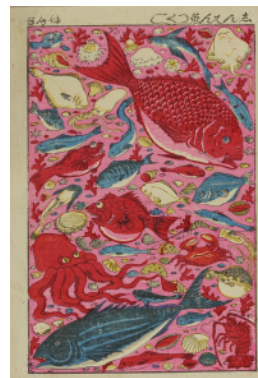
216 小国政 (KOKUNIMASA)
福島中佐道中壽語録 袋付 明治26年 (1893)
刷良 保存良 49x72cm. ¥60,000



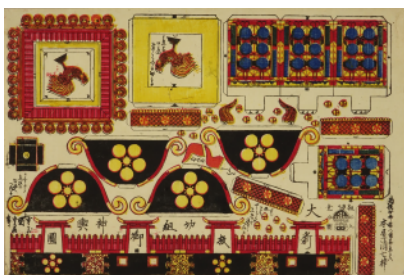
217 周延 (CHIKANOBU)
智育女児遊寿語六 袋付 明治29年 (1896)
刷並 保存良 約73.5x49.5cm. ¥90,000



218 国利 (KUNITOSHI)
魚尽 明治22年 (1889)
刷並 保存良
24.8x33.5cm. ¥7,000



219 無款 (UNSIGNED)
志んぱん魚つくし
明治 (Meiji Period)
刷並 保存良 中折
36.5x24.8cm. ¥10,000



220 貞信二代 (SADANOBU II)
大新板 切組 御神輿図
刷良 保存良 38.9x26cm. ¥25,000



221 無款 (UNSIGNED)
祇園祭礼信功記金閣寺の場 四枚続 4枚組 明治31年 (1898)
刷良 保存良 各約39.3x26.5cm. ¥50,000



222 無款 (UNSIGNED)
歌舞伎座當り狂言羽衣組上 三枚続 3枚組 明治31年 (1898)
刷良 保存良 各約39.5x26.4cm. ¥35,000



223 無款 (UNSIGNED)
奥州安達ヶ原三段目組上 三枚続 3枚組 明治41年 (1908)
刷良 保存良 各約39.5x26.5cm. ¥35,000



224 芳虎 (YOSHITORA)
美濃国赤坂宿熊坂夜討之図 3枚続 万延元年 (1860)
刷良 保存良 極少虫穴 左図左上破
各約36.3x25.5cm. ¥120,000



225 芳員 (YOSHIKAZU)
播州須磨寺若木桜制札図 3枚続 安政5年 (1858)
刷良 保存良 極少汚 極少傷
各約37x24.8cm. ¥90,000



226 貞秀 (SADAHIDE)
一ノ谷源平大合戦之図 3枚続 嘉永頃 (c.1848)
刷良 保存良 極少シミ 少傷 極少虫穴補修
各約37.4x25cm. ¥65,000



227 国芳 (KUNIYOSHI)
源平合戦 3枚続 天保頃 (c.1830)
刷良 保存良 極少汚 少傷 弱中折
各約37.5x26.5cm. ¥80,000



228 芳艶 (YOSHITSUYA)
壇之浦大合戦之図 3枚続 安政6年 (1859)
刷良 保存良 少汚 少傷
各約36.5x25cm. ¥55,000



229 貞秀 (SADAHIDE)
頼朝公上京行列図 3枚続 弘化頃 (c.1844)
刷良 保存良
各約36.8x24.8cm. ¥70,000



230 芳虎 (YOSHITORA)
文治五年源頼朝卿奥州征伐ノ図
3枚続 弘化頃 (c.1844)
刷良 保存良 極少汚 少傷
各約37.3x25cm. ¥58,000



231 吟光 (GINKO)
古今名婦鏡 袈裟御前
明治19年 (1886)
刷良 保存良 極少汚 極少傷
36.9x25.4cm. ¥18,000



232 勝月 (SHOGETSU)
花くらべ鶯錦 さくら静堀川夜討
明治22年 (1889)
刷極良 保存良 極少汚 極少ヤケ
36.8x25cm. ¥13,000



233
芳年 (YOSHITOSHI)
武勇雪月花之内 吉野の雪
3枚続 慶応3年 (1867)
刷良 保存良 右図下角極少汚
各約37x25.5cm.
¥450,000



234 国芳 (KUNIYOSHI)
富士裾野曾我兄弟本望遂図 3枚続 弘化頃 (c.1844)
刷良 保存良 少ヤケ 少傷 極少虫穴補修 少トリム 弱中折
各約36x25.5cm. ¥110,000



235 芳虎 (YOSHITORA)
和田合戦之図 3枚続 嘉永頃 (c.1848)
刷良 保存良 端少傷補修 中折
各約36.5x25.2cm. ¥45,000



236 芳員 (YOSHIKAZU)
太平記大合戦之図 3枚続 安政3年 (1856)
刷良 保存良 中図破補修
各約36x25.2cm. ¥45,000



237 芳虎 (YOSHITORA)
太平記葛井寺合戦 3枚続 慶応2年 (1866)
刷良 保存並 少汚 少シミ 傷補修 裏打
各約36.7x25cm. ¥40,000



238 芳廉 (YOSHIKADO)
湊川大合戦図 3枚続 嘉永頃 (c.1848)
刷良 保存良 少ヤケ 左図右縁切補修 少トリム
各約36x25.4cm. ¥50,000



239
春亭 (SHUNTEI)
上杉謙信 武将揃
文化頃 (c.1804)
刷良 保存良 少汚
少傷 極少虫穴補修 折
46.7x34.8cm.
¥180,000



240 国芳 (KUNIYOSHI)
名高百勇伝 武田信玄
弘化頃 (c.1844)
刷良 保存良 極少汚
37x25cm. ¥45,000



241 国綱 (KUNITSUNA)
川中島大合戦ノ図 3枚続 元治元年 (1864)
刷良 保存極良 但極少虫穴補修
各約36.4x25.5cm. ¥300,000



242 芳鶴 (YOSHITSURU)
川中島大合戦 3枚続 弘化頃 (c.1844)
刷良 保存良 少汚 少傷 縁傷補修
各約37x25cm. ¥150,000



243 国綱 (KUNITSUNA)
源平大合戦 3枚続 文久2年 (1862)
刷良 保存良 弱中折
各約36x25.5cm. ¥85,000



244 延一 (NOBUKAZU)
桶狭間 前田犬千代軍功 3枚続 明治25年 (1892)
刷良 保存良 少シミ
各約36.6x24.5cm. ¥12,000



245 国芳 (KUNIYOSHI)
平井権八幡随院長兵衛 3枚続 弘化頃 (c.1844)
刷良 保存良 少汚 少傷 中図裏に墨書
各約37x25.5cm. ¥98,000



246 芳虎 (YOSHITORA)
九州大合戦 3枚続 慶応3年 (1867)
刷良 保存良 縁極少汚
各約37x25cm. ¥65,000



247 芳幾 (YOSHIKU)
太平記英勇伝 石川兵助貞友
伊木半七 慶応3年 (1867)
刷良 保存良 極少汚
24.7x36.7cm. ¥15,000



248 芳虎 (YOSHITORA)
大日本六十余将
山城 佐馬守源頼光
慶応2年 (1866)
刷良 保存良
36.5x24.7cm. ¥20,000

249～252 芳虎 (YOSHITORA) 大日本六十余将 慶応2年 (1866) 特記なき限り刷良 保存良 各約37x25cm.



249 琉球 源為朝
極少シミ ¥20,000



250 備後 児嶋備後三郎高德
¥20,000



251 河内 楠判官橘正成
¥20,000



252 上野 新田左中将義貞
¥20,000



253 芳虎 (YOSHITORA) 義士銘々功名之図 3枚続
嘉永頃 (c.1848) 刷良 保存良 極少汚 極少虫穴 中折
各約38x25.8cm. ¥90,000



254 行川三平宗則
少シミ 角極少傷 ¥38,000



255 岡野銀右衛門包秀
虫穴補修 薄裏打 ¥28,000



256 貞秀 (SADAHIDE) 義士両国橋退去図 3枚続
文久3年 (1863) 刷良 保存良 極少汚 極少ヤケ
極少シワ 少傷補修 各約37.2x25.2cm. ¥220,000



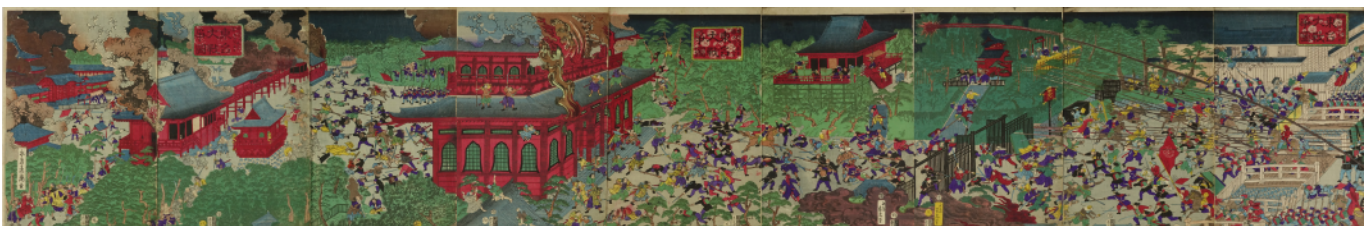
257 年参 (TOSHIKAZU) 元治夢物語 3枚続
明治11年 (1878) 刷良 保存良 各約37x25cm. ¥150,000



258 芳年 (YOSHITOSHI) 信州小田井城合戦之図 3枚続
明治元年 (1868) 刷良 保存良 極少汚 極少傷
各約35.2x25.2cm. ¥250,000



259 英斎 (EISAI) 春永本能寺合戦 3枚続
明治元年 (1868) 刷良 保存良 各約37.2x24.8cm. ¥80,000



260 芳虎 (YOSHITORA) 東台大戦争図 9枚続 明治7年 (1874) 刷良 保存良 少シミ 少汚 3枚目少破 各約37x25.2cm. ¥120,000



261 年信 (TOSHINOBU)
鹿兒島戦争記事 村田新八
明治10年 (1877)
刷良 保存良 極少汚
37.1x25.2cm. ¥13,000



262 芳年 (YOSHITOSHI)
西南雪月花内 川尻出陣之雪 チリメン絵
3枚続 明治10年 (1877) 刷良 保存良 裏打
29x57.6cm. ¥38,000



263 孟斎 (MOSAI) 川尻本陣評定ノ図 3枚続
明治10年 (1877) 刷良 保存良 極少汚
各約37x24.5cm. ¥18,000



264 年信 (TOSHINOBU) 日向陰地へ暴徒引退図 3枚続
明治10年 (1877) 刷良 保存良 極少汚
各約37x25cm. ¥18,000



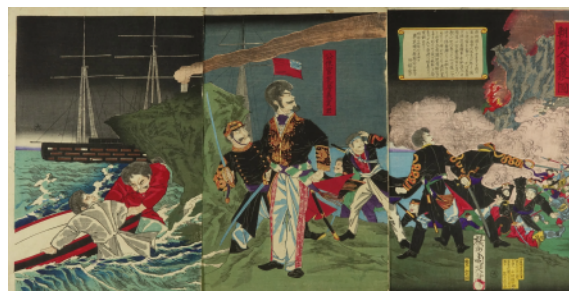
265 芳年 (YOSHITOSHI)
近世人物誌 やまと新聞附録
第十七 西郷隆盛
明治21年 (1888)
刷良 保存良 少汚
少傷 少虫穴 中折
36.3x25cm. ¥12,000



267 羽田富三郎 (HANEDA TOMISABURO)
西郷隆盛夢物語 上・中・下 二号中編 8枚 明治10年 (1877)
刷良 保存良 極少汚 極少虫穴 中折 各約37x25.5cm. ¥40,000



266 国利 (KUNITOSHI) 流行星の珍説 2枚続
明治10年 (1877) 刷良 保存良 少虫穴 中折
各約37x25.5cm. ¥15,000



268 周延 (CHIKANOBU)
朝鮮人暴徒ノ図 3枚続 明治15年 (1882)
刷良 保存良 各約37.1x25cm. ¥28,000



269 年英 (TOSHIHIDE)
万死を冒して大同江に敵情を探 3枚続 明治27年 (1894)
刷良 保存良 極少ヤケ 弱中折
各約37x25.2cm. ¥28,000



270 年方 (TOSHIKATA) 玄武門攻撃随一軍功者
原田重吉氏先登奮戦図 3枚続 明治27年 (1894)
刷良 保存良 極少シミ 弱中折 各約37.7x25cm. ¥22,000



271 年英 (TOSHIHIDE) 勇兵原田氏玄武門ヲ開ク 3枚続
明治27年 (1894) 刷良 保存良 極少汚 極少シミ 極少ヤケ
中折部少傷 各約35.5x25.1cm. ¥18,000



272 年方 (TOSHIKATA) 大日本帝国万歳平壤激戦大勝利図
3枚続 明治27年 (1894) 刷良 保存良 縁極少シミ 弱中折
各約37x25cm. ¥28,000



273 年光 (TOSHIMITSU) 日清九連城激戦船橋之図 3枚続
明治27年 (1894) 刷良 保存良 縁少汚及少シミ 弱中折
各約37.5x24.8cm. ¥18,000



274 耕漁 (KOGYO) 奉天附近我斥候騎兵雪夜敵情偵察図
3枚続 明治28年 (1895) 刷良 保存良 極少汚 少シワ
極少虫穴 各約37x24.8cm. ¥15,000



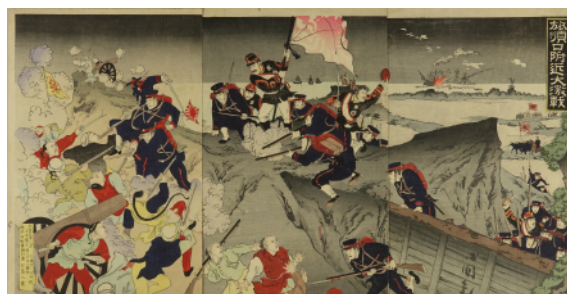
275 米作 (BEISAKU) 第一軍之斥候摩天嶺探検之図 3枚続
明治27年 (1894) 刷良 保存良 少シミ 弱中折
各約37.5x25cm. ¥32,000



276 周延 (CHIKANOBU) 金洲城先登 3枚続
明治28年 (1895) 刷良 保存良
各約36.4x25cm. ¥25,000



277 米作 (BEISAKU) 草河口附近日陣遠望満州騎兵異
相出陣之図 3枚続 明治28年 (1895) 刷良 保存良
縁極少シミ 一部角折 弱中折 各約37.4x25.4cm. ¥24,000



278 小国政 (KOKUNIMASA) 旅順口附近大激戦 3枚続
明治27年 (1894) 刷良 保存良 少ヤケ
少破補修 各約37.5x25.2cm. ¥18,000



279 周延 (CHIKANOBU) 日清戦争之内 3枚続
明治28年 (1895) 刷良 保存良
各約36.2x24.8cm. ¥25,000



280 清興 (KIYOOKI) 栄城湾上陸后之露營 3枚続
明治28年(1895) 刷良 保存良 折
各約36.5x24.8cm. ¥28,000



281 清親 (KIYOCHIKA) 冒弾雨単身開玄武門 3枚続
明治27年(1894) 刷良 保存良 縁極少シミ 弱中折
各約37x25cm. ¥38,000

286~291 清親 (KIYOCHIKA)
陸海軍人高名鑑 明治28年(1895)
刷良 保存良 各約35.5x25.5cm.



286 第三連隊歩兵
船山市之助氏 ¥18,000



287 陸軍中將山地元治君
¥24,000



282 清親 (KIYOCHIKA) 我軍平壤ノ清営ヲ襲フ 3枚続
明治27年(1894) 刷良 保存良 縁極少汚 中折
各約37x25.8cm. ¥40,000



283 清親 (KIYOCHIKA) 黄海之戦我松島之水兵臨死問敵艦之存否 3枚続 明治27年(1894)
刷良 保存良 裏打 約35x70.5cm. ¥23,000



288 工兵小野口徳造氏
¥24,000



289 三谷中尉
¥25,000



284 清親 (KIYOCHIKA) 威海衛攻撃氷上之進撃 3枚続
明治28年(1895) 刷良 保存良 少シミ 弱中折
各約37x25cm. ¥36,000



290 歩兵第十一連隊長
富岡中佐 ¥25,000



291 可児大尉市太君
¥25,000



285 清親 (KIYOCHIKA) 第二軍旅順口攻撃之図 3枚続
明治27年(1894) 刷良 保存良 縁極少シミ 弱中折
各約36.7x25.3cm. ¥43,000

292～297 耕濤 (KOTO) 日本魂 明治28年 (1895) 特記なき限り刷良 保存良 各約35.5x25cm.



292 松崎大尉
安城渡に勇戦する図
縁極少シミ ¥10,000



293 林大尉勇進憤闘
進んで敵壘に迫る図
縁極少シミ ¥10,000



294 斥候尾崎少尉
極少穴 ¥8,000



295 大鳥公使入城之図
¥10,000



296 工兵小野口徳重
爆烈弾を以て金州城門
を破る図 ¥10,000

日露戦争版画 298～380

写真技術の進歩によって日露戦争(1904-05)を描いた木版画は日清戦争(1894-95)に比べて極端に少なく、「渡邊庄三郎」(渡辺規編 渡辺美術木版画舗 1974)には「前者(日清戦争)をモチーフにした木版画は百点を越すと思われるが、後者(日露戦争)の場合30点以上出版されていないのではなかろうか」と記されている。

絵師が直接取材したものではないため、報道目的よりも絵画的要素を重視した美しい作品が多い。

80種もの作品のコレクションは極めて稀ですので、全点(重複作品を除く)一括でご所蔵していただけるお客様のご注文を優先させていただきます。8月2日(火)までにお申し出及びご購入の確約をいただけるのお客様を対象とさせていただきます。

個別作品のご注文も承りますが、販売の確定は8月3日(水)以降となります。また、趣旨をご理解いただき、再販目的のお客様の一括のご注文はお断り申し上げます。予めご了承ください。

No. 297a 2,600,000円 (80点)

No. 298～380 一括購入(個別合計 3,067,000円)

*重複作品(313/314; 353/354; 378/379)はどちらかお選びください。

No. 298-380

JAPAN-RUSSO WAR (1904-05)

After Shino-Japan War (1894-95), role of wood-block prints as news-media was taken over by photography and other printed medium. Compare to Shino-Japan War, of which over 300 woodblock prints were published, number of Japan-Russo War is extremely small.

While Shino-Japan War prints took the role of news-media or propaganda, many of Japan-Russo War prints focused on pictorial beauty.

Collection of 80 works is highly important. Collection purchase from museums, institutions, and private collectors, who would keep the collection together, takes precedence. Payment or purchase confirmation must be received by August 2. Individual orders will also be taken. Confirmation of availability will be informed after August 3.

No. 297a: ¥2,600,000 (80 pieces)

Collection purchase of No. 298-380

(List total: ¥3,067,000)

*Duplicates (313/314; 353/354; 378/379) are to be chosen one of each.



297 旗手大森狷之助
船橋里の乱戦に連隊
旗を護図 ¥10,000

←
こちらをクリック
Click here.



298 耕濤 (KOTO) 日露会見談判図 3枚続
明治37年 (1904) 刷良 保存良 少シミ 少虫穴 弱中折
裏打 各約35.5x24.6cm. ¥23,000



299 華香 (KAKO) 仁川港ニ於テ敵艦二隻ヲ撃沈敗兵端艇ニ
乗ジテ逃走スル之図 3枚続 明治37年 (1904) 刷良 保存良
少シミ 極少虫穴 弱中折 裏打 各約35.5x24.2cm. ¥28,000



300 清親 (KIYOCHIKA) 日露仁川大日本海軍大勝利萬歳
3枚続 明治37年 (1904) 刷良 保存良 周囲極少シミ
極少虫穴 中折 裏打 各約35.4x24.5cm. ¥30,000



301 清親 (KIYOCHIKA) 旅順港口初瀬艦奮闘之図 3枚続
明治37年 (1904) 刷良 保存良 少シミ 中折 裏打
各約35.5x24.5cm. ¥30,000

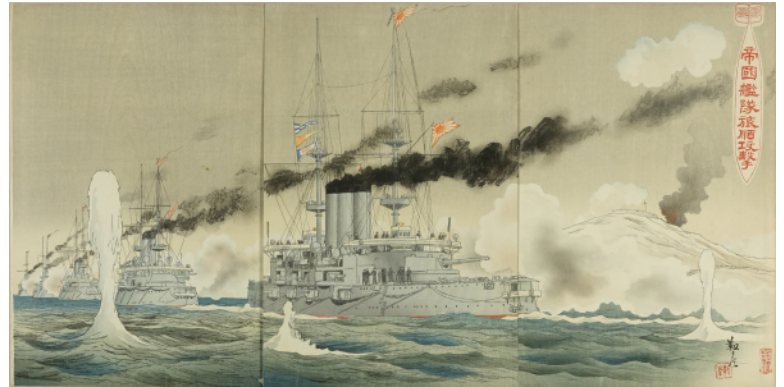


302 静斎 (SEISAI) 日露交戦錦絵一 旅順之大海戦 3枚続
明治37年(1904) 刷良 保存良 極少シミ 極少虫穴
弱中折 裏打 各約35.5x24.8cm. ¥25,000



303 周延 (CHIKANOBU) 日露軍艦旅順港二大激戦之図 3枚続
明治37年(1904) 刷良 保存良 極少シミ 少虫穴 弱中折 裏打
各約35.3x24.7cm. ¥40,000

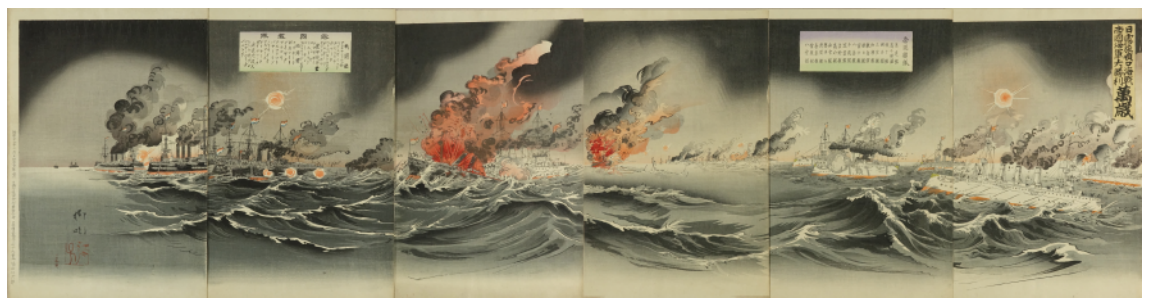
304 安田鞞彦 (YASUDA YUKIHIKO)
帝国艦隊旅順攻撃
3枚続 明治37年(1904)
刷良 保存良 左図極少シミ 裏打
各約34.6x23.8cm. ¥120,000



305 華香 (KAKO) 旅順大海戦露艦撃沈之図 3枚続
明治37年(1904) 刷良 保存良 極少汚 極少シミ 裏打
各約37.4x25cm. ¥35,000



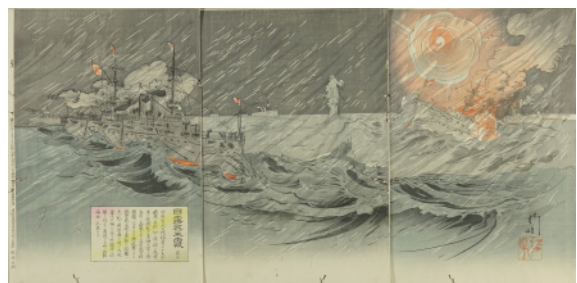
306 画狂人又平 (GAKYOJIN MATAHEI)
旅順港外ニ於テ露艦轟沈之図 3枚続 明治37年(1904)
刷良 保存良 極少シミ 極少虫穴 弱中折 裏打
各約35.2x24.5cm. ¥28,000



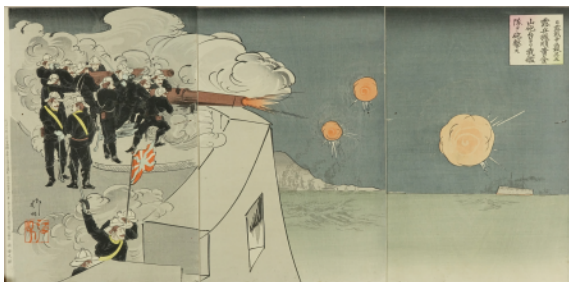
307 柳哇 (RYUA) 日露旅順口海戦帝国海軍大勝利万歳 6枚続 明治37年(1904)
刷良 保存良 一部極少汚 裏打 各約37.5x25.2cm. ¥150,000



308 柳哇 (RYUA) 露義戦旅順大攻撃海戦 3枚続
明治37年(1904) 刷良 保存良 少トリム 裏打
各約33.1x24cm. ¥30,000



309 柳哇 (RYUA) 日露戦争画報 其三 3枚続
明治37年(1904) 刷良 保存良 極少シミ 少虫穴
弱中折 裏打 各約35.5x24.5cm. ¥25,000



310 柳哇 (RYUA) 日露戦争画報 其五 露兵旅順黄金山砲台ヨリ我艦隊ヲ砲撃ス 3枚続 明治37年 (1904)
刷良 保存良 下部極少シミ 極少虫穴 弱中折 裏打
各約35.5x24.8cm. ¥28,000



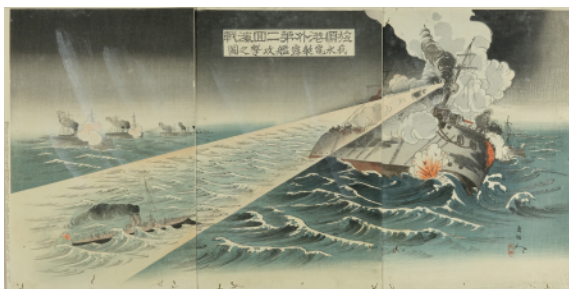
311 倚松 (ISHO) 日露戦争旅順港外敵艦轟沈 大日本帝国海軍大勝利之図 3枚続 明治37年 (1904)
刷良 保存良 極少シミ 極少虫穴 裏打
各約35.3x24.8cm. ¥30,000



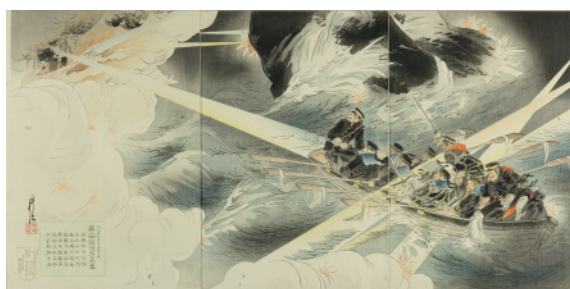
312 玉宝 (GYOKUHO) 旅順港外大海戦ニ我水雷艇奮戦之図 3枚続 明治37年 (1904) 刷良 保存良 裏打
各約35.5x24cm. ¥35,000



313 画狂人又平 (GAKYOJIN MATAHEI) 旅順港外第二海戦 我水雷艇露艦攻撃之図 3枚続 明治37年 (1904)
刷良 保存良 少極少虫穴 弱中折 裏打
各約35.5x24.6cm. ¥30,000



314 画狂人又平 (GAKYOJIN MATAHEI) 旅順港外第二回海戦 我水雷艇露艦攻撃之図 3枚続 明治37年 (1904)
刷良 保存良 極少シミ 下部極少汚及少虫穴 弱中折 裏打
各約37.8x24.5cm. ¥28,000



315 耕涛 (KOTO) 明治卅七年二月二十四日夜 第一回 旅順港口閉塞 3枚続 明治37年 (1904)
刷良 保存良 周囲極少シミ 極少虫穴 弱中折 裏打
各約36.5x24.5cm. ¥30,000



316 年英 (TOSHIHIDE) 日露交戦紀聞 三月十日旅順口 彼我駆逐艦の... 3枚続 明治37年 (1904)
刷良 保存良 極少虫穴 弱中折 裏打
各約35.5x24.5cm. ¥25,000



317 耕涛 (KOTO) 明治卅七年三月十日曉旅順港海戦 第一軍功者 南澤安雄君 名誉功四級 賜金鵒勲章 任機関少監 3枚続 明治37年 (1904) 刷良 保存良 下部極少シミ 極少虫穴 弱中折 裏打 各約35.5x24.6cm. ¥30,000



318 美邦 (BIHO) 海軍中佐広瀬君之大偉勲 3枚続 明治37年 (1904) 刷良 保存良 裏打
各約35.6x24.7cm. ¥30,000



319 耕涛 (KOTO) 軍神 我海軍中佐広瀬武夫君 3枚続 明治37年 (1904) 刷良 保存良 極少虫穴 裏打
各約35.5x24.8cm. ¥25,000



320 作者不詳 (ARTIST UNKNOWN) 日露旅順港海戦日本
決死隊勇戦ス 3枚続 明治37年 (1904)
刷良 保存良 中図極少シミ 極少虫穴 弱中折 裏打
各約35.4x24.7cm. ¥28,000



321 清親 (KIYOCHIKA) 海軍中佐佐瀬武夫君 3枚続
明治37年 (1904) 刷良 保存良 極少汚 極少シミ
中折 裏打 各約35.5x24.6cm. ¥30,000

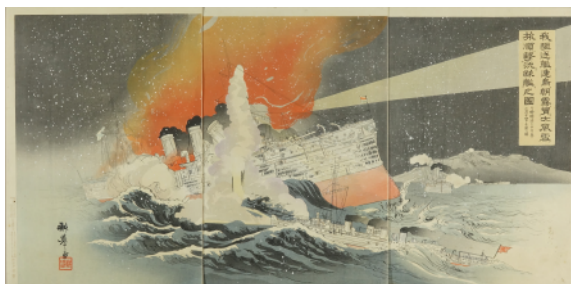


322 鏡湖 (KYOKO) 旅順港閉塞隊佐瀬中佐奮戦ス 3枚続
明治37年 (1904) 刷良 保存良 緑少汚 左図右下極少虫穴
裏打 各約35.7x25.2cm. ¥30,000



324 耕峰 (KOHO) 旅順海戦露国提督致命之現況 3枚続
明治37年 (1904) 刷良 保存良 極少シミ 中図題部補修
裏打 各約37x24.8cm. ¥25,000

323 半喃 (HAMPO)
第八旅順攻撃之図
横判縦3枚続
明治37年 (1904)
刷良 保存良 極少汚
極少シミ 薄裏打
各約23.4x36.5cm.
¥150,000



325 耕拳 (KOKYO) 我駆逐艦速鳥朝霧大風雪ヲ冒シテ
旅順ニ敵艦ヲ撃沈スル之図 3枚続 明治37年 (1904)
刷良 保存良 右図極少シミ 極少虫穴 弱中折 裏打
各約35.5x24.6cm. ¥30,000



326 美邦 (BIHO) 八雲御乗組山階宮菊麿王殿下御奮戦之図
3枚続 明治37年 (1904) 刷良 保存良 極少シミ 極少虫穴
弱中折 裏打 各約35.5x24.5cm. ¥25,000



327 画狂人 (GAKYOJIN) 日露戦争画報 其七 旅順海戦露艦沈没
3枚続 明治37年 (1904) 刷良 保存良 極少虫穴 弱中折 裏打
各約35.2x24.5cm. ¥23,000



328 輝方 (TERUKATA) 大日本帝国海軍大勝利萬歳 3枚続
明治37年 (1904) 刷良 保存良 左図極少シミ 極少虫穴
弱中折 裏打 各約35.5x24.6cm. ¥30,000



329 清親 (KIYOCHIKA) 浦潮港海軍之攻撃八雲艦の砲撃は敵に多大の損害を加へ大勝利にて引揚露艦氷結困却の図
3枚続 明治37年(1904) 刷良 保存良 左図極少汚
一部縁極少シミ 弱中折 裏打 各約35.4x24.5cm. ¥40,000



330 不詳 (ARTIST UNKNOWN) 韓国京城外日露戦闘之図
3枚続 明治37年(1904) 刷良 保存良 下部少シミ 裏打
各約35.5x24.5cm. ¥20,000



331 柳哇 (RYUA) 日露戦争画報 其八 我斥候隊勇戦
3枚続 明治37年(1904) 刷良 保存良 右図極少シミ
弱中折 裏打 各約35.5x24.5cm. ¥23,000



332 柳哇 (RYUA) 日露戦争電報実記 馬賊満州鉄道ヲ破壊ス
3枚続 明治37年(1904) 刷良 保存良 少シワ 綴穴
35.5x71.5cm. ¥45,000



333 柳哇 (RYUA) 日露戦争電報実記之内 バイカル湖水上鉄道
3枚続 明治37年(1904) 刷良 保存良 極少シミ 極少虫穴
弱中折 裏打 各約35.5x24.5cm. ¥60,000



334 華香 (KAKO) 敵騎兵襲義州街道 我歩兵猛烈追撃退却之
3枚続 明治37年(1904) 刷良 保存良 弱中折 裏打
各約35.3x24.5cm. ¥23,000



335 年英 (TOSHIHIDE) 日露交戦紀聞 三月廿八日定州於
彼我騎兵衝突... 3枚続 明治37年(1904) 刷良 保存良 裏打
各約35.4x24.5cm. ¥23,000



336 年英 (TOSHIHIDE) 陸戦第一日本軍大勝利 3枚続
明治37年(1904) 刷良 保存良 極少シミ 極少虫穴 裏打
各約35.5x24.5cm. ¥20,000



337 月三 (GESSAN) 鴨緑江上之衝突 3枚続
明治37年(1904) 刷良 保存良 極少シミ 右図極少虫穴 裏打
各約35.5x24.2cm. ¥23,000



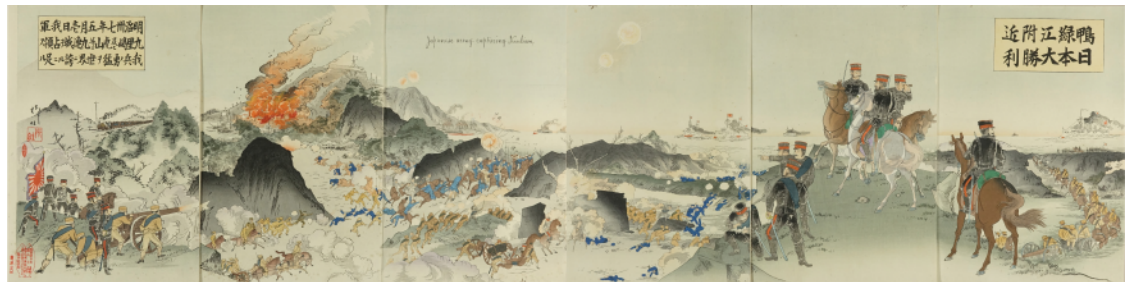
338 月三 (GESSAN) 我騎兵隊ノ将校斥候... 3枚続
明治37年(1904) 刷良 保存良 極少シミ 裏打
各約35.5x24.4cm. ¥23,000



339 清親 (KIYOCHIKA) 近衛砲兵大佐連隊長隈元政次氏
3枚続 明治37年(1904) 刷良 保存良 中折 裏打
各約35.5x24.5cm. ¥35,000



340 柳哇 (RYUA) 我軍定洲附近進撃 3枚続
明治37年(1904) 刷良 保存良
各約36.1x24cm. ¥18,000



341 柳哇 (RYUA) 鴨緑江附近日本大勝利 6枚続 明治37年(1904)
刷良 保存良 極少シミ 極少虫穴 弱中折 裏打
各約35.5x24.5cm. ¥50,000



342 周延 (CHIKANOBU) 定州城占領之図 3枚続
明治37年(1904) 刷良 保存良 少虫穴 弱中折 裏打
各約36.5x24.5cm. ¥55,000



343 年英 (TOSHIHIDE) 日露交戦紀聞 近衛歩兵上等兵
大橋啓吉氏 3枚続 明治37年(1904) 刷良 保存良 極少シミ
裏打 各約35.2x24.5cm. ¥23,000



344 安田靫彦 (YASUDA YUKIHIKO) 九連城激戦松平中尉奮戦ノ図 3枚続 明治37年(1904)
刷良 保存良 極少シミ 極少虫穴 弱中折 裏打
各約35.5x24.5cm. ¥45,000



345 月三 (GESSAN) 我軍鴨緑江上架橋ヲ渡リ敵兵ヲ撃退シ
竟ニ九連城ヲ占領ス 3枚続 明治37年(1904)
刷良 保存良 極少シミ 極少虫穴 裏打
各約37.5x24.5cm. ¥23,000



346 月三 (GESSAN) 九連城蛤蟆塘大戦ニ我兵露兵ヲ生擒ス
3枚続 明治37年(1904) 刷良 保存良 極少シミ 裏打
各約35.5x24.5cm. ¥23,000



347 清親 (KIYOCHIKA) 近衛砲隊ノ進軍 3枚続
明治37年(1904) 刷良 保存良 周囲極少シミ 弱中折
裏打 各約35.3x24.5cm. ¥40,000



348 輝方 (TERUKATA) 我軍鳳凰城占領ス大日本陸軍大勝利 萬歳 3枚続 明治37年(1904) 刷良 保存良 弱中折 裏打 各約35.5x24.8cm. ¥28,000



349 画狂人 (GAKYOJIN) 日露交戦 明治三十七年五月一日 我軍九連城之露軍ヲ撃退シ呐喊占領之光景 3枚続 明治37年(1904) 刷良 保存良 各約36x25cm. ¥18,000



350 清親 (KIYOCHIKA) 南山之役我軍迅雷風雨ニ乗ジテ敵壕ヲ突進ス 3枚続 明治37年(1904) 刷良 保存良 縁極少シミ 極少虫穴 弱中折 裏打 各約35.7x24.5cm. ¥40,000



351 清親 (KIYOCHIKA) 日露戦争南山激戦大日本大勝利萬歳 3枚続 明治37年(1904) 刷良 保存良 弱中折 裏打 各約35.5x24.6cm. ¥45,000



352 耕年 (KONEN) 我軍一斉突撃占領南山 3枚続 明治37年(1904) 刷良 保存良 裏打 各約35.5x24.6cm. ¥28,000



353 月三 (GESSAN) 工兵第四大隊中決死勇士冒迅雷豪雨以綿火藥破壊金州城門 3枚続 明治37年(1904) 刷良 保存良 縁極少汚 各約38x25.4cm ¥30,000



354 月三 (GESSAN) 工兵第四大隊中決死勇士冒迅雷豪雨以綿火藥破壊金州城門 3枚続 明治37年(1904) 刷良 保存良 裏打 各約35.5x24.5cm. ¥28,000



355 月三 (GESSAN) 我第二軍之右翼砲火ヲ冒シテ金州灣ヲ徒渉シ敵壘ヲ攻撃ス 3枚続 明治37年(1904) 刷良 保存良 中図及右図下角極少シミ 弱中折 裏打 各約35.5x24.5cm. ¥28,000



356 月三 (GESSAN) 南山之役中尉栄川又三郎君陣頭ニ旭日ノ軍扇ヲ捧テ士卒ヲ指揮ス 3枚続 明治37年(1904) 刷良 保存良 極少シミ 極少虫穴 弱中折 裏打 各約35.4x24.5cm. ¥30,000



357 月三 (GESSAN) 鉄條網ヲ破壊シテ南山之敵壘ヲ抜ク 3枚続 明治37年(1904) 刷良 保存良 弱中折 裏打 各約35.4x24.5cm. ¥28,000



358 年英 (TOSHIHIDE) 白露交戦紀聞 歩兵少尉上田麟氏
3枚続 明治37年(1904) 刷良 保存良 弱中折 裏打
各約35.5x24.6cm. ¥28,000



359 萬里 (BANRI) 金州城陥落我第二軍之劇戦南山占領之
光景 3枚続 明治37年(1904) 刷良 保存良 中図及右図
極少シミ 弱中折 裏打 各約35.5x24.5cm. ¥28,000



360 美邦 (BIHO) 我軍大挙シテ金州城ヲ攻略ス 3枚続
明治37年(1904) 刷良 保存良 中図極少シミ 弱中折
裏打 各約35.5x24.5cm. ¥28,000



361 小原古邨 (OHARA KOSON) 得利寺大砲撃我騎兵
龍王廟二大勇戦之図 3枚続 明治37年(1904)
刷良 保存良 縁極少シミ 極少虫穴 弱中折 裏打
各約35.5x24.5cm. ¥100,000



362 美邦 (BIHO) 我第二軍砲弾雨ヲ冒シテ蓋平之地ヲ
占領ス 3枚続 明治37年(1904)
刷良 保存良 左図極少汚 中図極少シミ 弱中折 裏打
各約35.5x24.5cm. ¥28,000



363 清親 (KIYOCHIKA) 摩天嶺之逆襲 3枚続
明治37年(1904) 刷良 保存良 一部縁極少シミ 弱中折
裏打 各約35.5x24.5cm. ¥40,000



364 美邦 (BIHO) 我軍強襲シテ敵軍ヲ砲撃シ大石橋ノ
堅壘ヲ占領ス 3枚続 明治37年(1904) 刷良 保存良
極少シミ 裏打 各約35.2x24.5cm. ¥28,000



365 美邦 (BIHO) 我軍司令部従リ一目遼陽ノ大戦場ヲ望ム
3枚続 明治37年(1904) 刷良 保存良 極少虫穴 裏打
各約35.4x24.5cm. ¥28,000



366 月三 (GESSAN) 遼陽之役敵將黒鳩公戦略齟齬シ総軍
大ニ敗ル公勇奮自陣頭ニ立テ血戦ス 3枚続
明治37年(1904) 刷良 保存良 極少虫穴 裏打
各約36.5x24.5cm. ¥35,000



367 月三 (GESSAN) 敵軍汽車ニ乗ジ普蘭店ニ来リ我軍ヲ
見テ蒼惶 赤十字旗ヲ濫用シ北方ニ疾走ス 3枚続
明治37年(1904) 刷良 保存良 中図極少シミ 弱中折 裏打
各約35.5x24.5cm. ¥28,000



368 美邦 (BIHO) 七星門外斥候衝突 3枚続
明治37年 (1904) 刷良 保存良 少シミ 弱中折 裏打
各約36.3x24.5cm. ¥20,000



369 静舟 (SEISHU) 白露交戦錦絵 七 平壤付近七星門外ニ
我兵敵ノ偵察隊ヲ撃退ス 3枚続 明治37年 (1904)
刷良 保存良 極少シミ 極少虫穴 弱中折 裏打
各約35.5x24.5cm. ¥25,000



370 美邦 (BIHO) 沙河ノ会戦ニ我力右翼軍之一縦隊
頑強之敵ヲ太子河ノ左岸ニ撃退 3枚続 明治37年 (1904)
刷良 保存良 極少虫穴 裏打 各約35.4x24.5cm. ¥28,000



371 月三 (GESSAN) 龍王廟大混戦 3枚続
明治37年 (1904) 刷良 保存良 極少虫穴 裏打
各約36.5x24.5cm. ¥30,000



372 国活 (KUNIKATSU) 我軍旅順口占領之図 3枚続
明治37年 (1904) 刷良 保存良 極少虫穴 裏打
各約36.6x24.5cm. ¥28,000



373 美邦 (BIHO) 我軍猛進シテ旅順ノ背面ヲ攻撃ス 3枚続
明治37年 (1904) 刷良 保存良 縁極少シミ 極少虫穴 裏打
各約35.5x24.7cm. ¥23,000



374 紫紅 (SHIKO) 旅順港占領 3枚続
明治37年 (1904) 刷良 保存良 極少虫穴 裏打
各約36.5x24.5cm. ¥28,000



376 清親 (KIYOCHIKA) 大激戦二百三高地占領 3枚続
明治37年 (1904) 刷良 保存良 縁極少シミ 極少虫穴裏打
各約36.5x24.5cm. ¥45,000



377 半喃 (HANPO) 帝国萬歳旅順口占領之図 3枚続
明治37年 (1904) 刷良 保存良 右図極少シミ 極少虫穴 裏打
各約36.5x24.5cm. ¥28,000



375 小原古邨 (OHARA KOSON) 帝国軍団旅順口背面上陸
占領之図 3枚続 明治37年 (1904) 刷良 保存良 極少虫穴
中図題部補修 弱中折 裏打 各約37x24.6cm. ¥120,000



378 清親 (KIYOCHIKA)
 日露旅順港之撃戦 大日本大勝利萬歳 6枚続 明治37年 (1904)
 刷良 保存良 裏打
 各約35.5x23.6cm. ¥70,000



379 清親 (KIYOCHIKA)
 日露旅順港之撃戦 大日本大勝利萬歳 6枚続 明治37年 (1904)
 刷良 保存良 縁極少シミ 極少虫穴 弱中折 裏打
 各約35.5x24.5cm. ¥70,000



380 耕濤 (KOTO)
 日露戦争画 8枚 明治37年 (1904)
 刷良 保存良 極少シミ 極少虫穴 裏打
 各約25.2x36.5cm. ¥40,000



381 耕濤 (KOTO) 背面攻撃
 明治37年 (1904) 刷良 保存良
 25.3x36.6cm. ¥16,000



382

高橋松亭 (TAKAHASHI SHOTEI)

都南八景 蒲田 大正11年 (1922)

刷極良 保存極良

26.5x39cm.

¥1,000,000



383

高橋松亭 (TAKAHASHI SHOTEI)

雪月花 徳持 大正11年 (1922)

刷極良 保存極良

38.8x26.5cm.

¥800,000



384

川瀬巴水 (KAWASE HASUI)

土浦の朝 昭和6年 (1931)

刷極良 保存極良 但縁極少ヤケ

38.8x26.2cm.

¥800,000



386 川瀬巴水 (KAWASE HASUI)
後志美国 (朝海) 昭和7年 (1932)
刷極良 保存極良 但縁極少ヤケ
38.6x26.5cm. ¥700,000



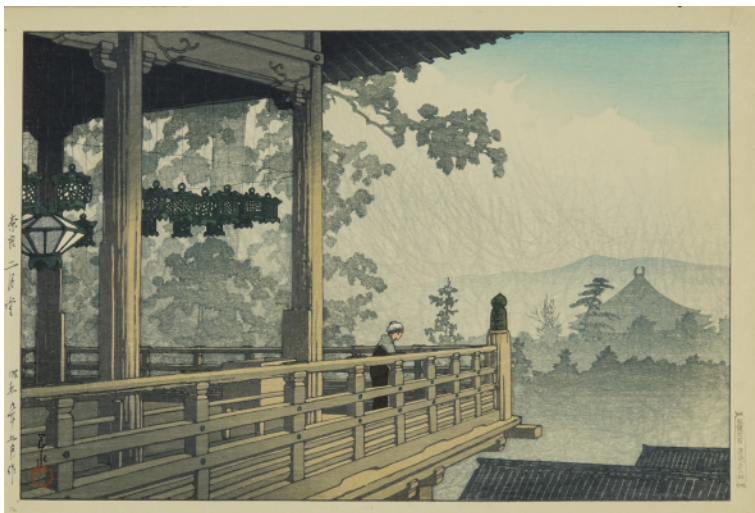
385 川瀬巴水 (KAWASE HASUI)
富士の雪晴 (田子の浦)
土井貞一版 昭和7年 (1932)
刷極良 保存極良
39.1x26cm. ¥1,000,000



388 川瀬巴水 (KAWASE HASUI)
宇治平等院鳳凰堂 昭和8年 (1933)
刷極良 保存極良
38.5x26.4cm. ¥800,000



387 川瀬巴水 (KAWASE HASUI)
大坂道頓堀の朝 昭和8年 (1933)
刷極良 保存極良 但縁極少ヤケ
39.5x26.5cm. ¥900,000



389 川瀬巴水 (KAWASE HASUI)
奈良二月堂 昭和9年 (1934)
刷極良 保存極良
26x38.8cm. ¥800,000

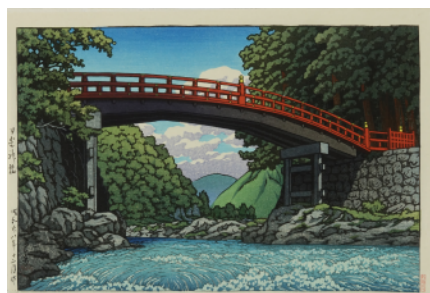
390
川瀬巴水 (KAWASE HASUI)
朝鮮智異山泉隱寺
昭和15年 (1940)
刷極良 保存極良
39.3x26.6cm. ¥200,000



391 川瀬巴水 (KAWASE HASUI)
五浦之月 (茨城県) 昭和27年 (1952) 後刷
刷極良 保存極良
26.5x39cm. ¥100,000



392
川瀬巴水 (KAWASE HASUI)
三津浜の朝
昭和28年 (1953) 後刷
刷極良 保存極良
39.5x26.3cm. ¥100,000



393 川瀬巴水 (KAWASE HASUI)
日光神橋 昭和28年 (1953) 後刷
刷極良 保存極良
26.3x39cm. ¥90,000



394 川瀬巴水 (KAWASE HASUI)
舟津の秋 昭和28年 (1953) 後刷
刷極良 保存極良
26.2x39.5cm. ¥100,000



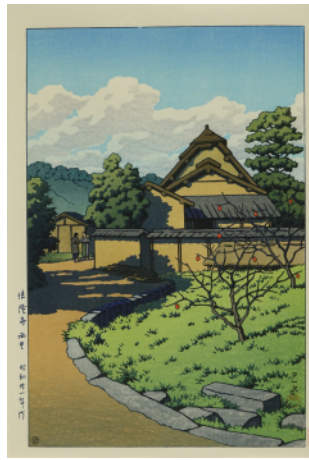
395 川瀬巴水 (KAWASE HASUI)
池上本門寺の塔 昭和28年 (1953) 後刷
刷極良 保存極良
26.5x39.8cm. ¥110,000



396 川瀬巴水 (KAWASE HASUI)
勿来の夕 昭和29年 (1954) 後刷
刷極良 保存極良
39.2x26.2cm. ¥80,000



397 川瀬巴水 (KAWASE HASUI)
岡山城之朝 昭和30年 (1955) 後刷
刷極良 保存極良
39.3x26.6cm. ¥100,000



398 川瀬巴水 (KAWASE HASUI)
法隆寺西里 昭和30年 (1955) 後刷
刷極良 保存極良
39.6x26.7cm. ¥90,000



399 川瀬巴水 (KAWASE HASUI)
田沢湖漢搓宮 昭和2年 (1927) 後刷
刷極良 保存極良
26.5x39cm. ¥180,000



400 暁斎 (after KYOSAI)
雨中の鷺 死後版
刷良 保存良
38.5x26cm. ¥50,000



401
小原古邨 (OHARA KOSON)
鷲 昭和初期 (c.1926)
刷極良 保存良
35x19cm.
¥140,000



402 笠松紫浪 (KASAMATSU SHIRO)
たそがれ 信州穂波温泉
昭和23年 (1948) 刷良 保存良
39.2x26cm. ¥160,000



403 景文 (KEIBUN)
鴨 昭和 (Showa Period)
刷極良 保存極良
26.5x39.5cm. ¥10,000



404 大野麦風 (ONO BAKUFU)
イシダイ 昭和10年頃 (c.1935)
刷良 保存良 少ヤケ 極少シミ
28.2x40cm. ¥50,000



405 大野麦風 (ONO BAKUFU)
さわら 昭和10年頃 (c.1935)
刷良 保存良 極少ヤケ 極少シミ
28.6x40.5cm. ¥50,000



406 山中古洞 (YAMANAKA KODO)
神宮の神苑 昭和12年 (1937)
刷良 保存良
26.5x38.8cm. ¥5,000



407 静光 (SEIKO)
庭 昭和20年頃 (c.1945)
刷極良 保存極良
27x39.5cm. ¥28,000



408 静光 (SEIKO)
月明かり 昭和23年 (1948)
刷極良 保存極良
26.9x39.7cm. ¥28,000

409 月岡耕漁 (TSUKIOKA KOGYO)

能樂百番 120枚揃 (1枚x74図 / 2枚続x13図 / 3枚続x3図)

大正11～昭和元年 (1922-26)

刷極良 保存極良 一部極少汚 一部極少シミ 一部縁極少変色

各約37.4x25.3cm. ¥1,200,000







410 伊東深水 (ITO SHINSUI)
新美人十二姿 炬燵 限200 大正12年 (1923)
 刷極良 保存良 極少ヤケ
 42.8x26cm. ¥800,000



412 吉田博 (YOSHIDA HIROSHI)
東京拾二題 旧本丸 自摺 昭和4年 (1929)
 刷極良 保存極良
 27.2x41.2cm. ¥300,000



414 吉田博 (YOSHIDA HIROSHI)
帆船 順序刷 5枚組 昭和14年 (1939)
 刷良 保存良 一部極少シミ
 各約31x24cm. ¥70,000



411 吉田博 (YOSHIDA HIROSHI)
東京拾二題 落合徳川ぼたん園 自摺 昭和3年 (1928)
 刷極良 保存極良
 27.5x41.3cm. ¥450,000



413 吉田博 (YOSHIDA HIROSHI)
梅之家 自摺 昭和10年 (1935)
 刷極良 保存良 縁極少汚
 40.7x27cm. ¥240,000



415 鳥居清忠 (TORI KIYOTADA)
石橋 白頭獅子の精
 昭和12年頃 (c.1937)
 刷極良 保存良 極少ヤケ
 44.5x28.6cm. ¥18,000



416 竹内栖鳳 (TAKEUCHI SEIHO)
 栖鳳十二支帖 12図一帖 明治 (Meiji Period)
 刷良 保存良
 49.5x37.2cm. ¥280,000



417 諸画家 (VARIOUS ARTISTS)
 東京回顧図会 15枚揃 昭和20年 (1945)
 刷良 保存良 一部極少シミ 一部極少ヤケ 帙傷補修
 20x26.3cm. ¥260,000

Onchi Koshiro 恩地孝四郎 (3), Sekino Jun'ichiro 関野準一郎,
 Saito Kiyoshi 齋藤清, Hiratsuka Un'ichi 平塚運一 (2),
 Azechi Umetaro 畦地梅太郎, Yamaguchi Gen 山口源 (2),
 Kawakami Sumio 川上澄生 (2), Maekawa Sempan 前川千帆 (2),
 and Maeda Masao 前田政雄





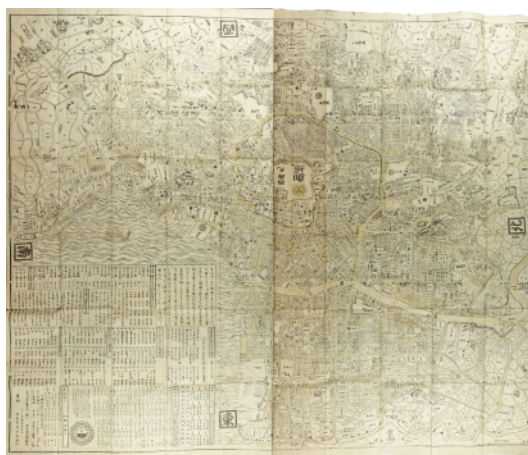
418 無款 (UNSIGNED)
御江戸大絵図 天保改正 弘化3年 (1846) 原装 元題箋 袋付
極少虫穴 袋汚及傷 121x133cm. ¥130,000



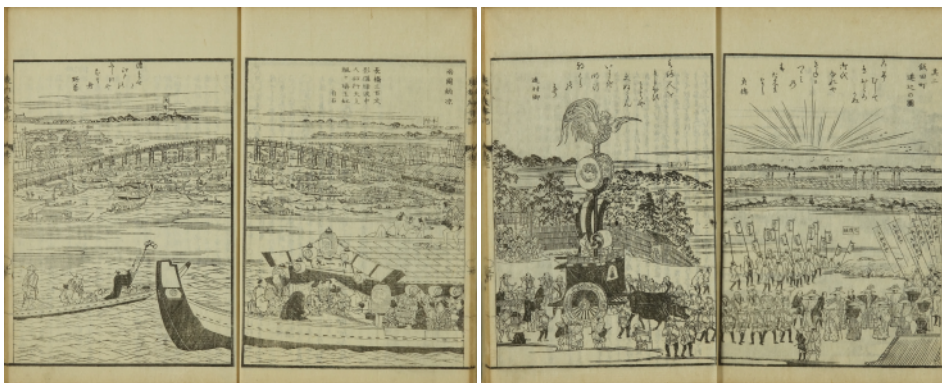
419 無款 (UNSIGNED)
分間江戸大江図 須原屋治右衛門蔵版 享保9年 (1724)
原装 元題箋 墨刷 筆彩 帙入
少虫穴補修 133x175cm. ¥250,000



420 無款 (UNSIGNED)
泰平御江戸絵図 弘化 (c.1844)
貼出付 元表紙 一部破 69x93cm. ¥40,000



421 無款 (UNSIGNED)
分間江戸大江図 須原屋茂兵衛版 嘉永7年 (1854)
原装 元題箋 少シミ 少虫穴
166x197cm. ¥120,000



422
長谷川雪旦 (HASEGAWA SETTAN)
東都歳事記 5冊揃 斎藤月岑著
天保9年 (1839)刊 原装美本 蔵印
各23x15.5cm. ¥120,000



423



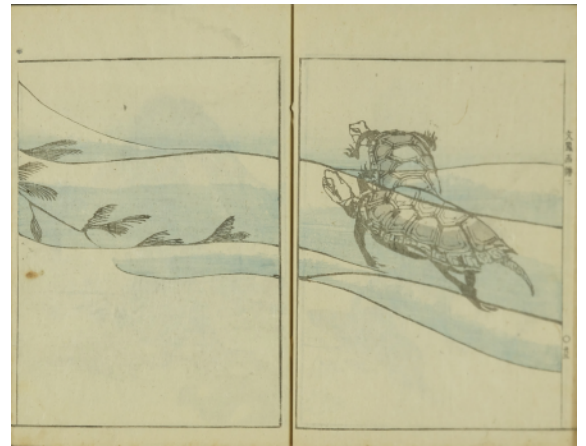
424

423 北斎 (HOKUSAI)
北斎漫画 初編 江戸刷
表紙傷及墨書入 題箋傷
角少指汚及 少傷 一部墨書入
一部極少シミ 蔵印
22.6x15.5cm. ¥100,000

424 北斎 (HOKUSAI)
北斎漫画 九編 江戸刷
題箋欠 見返と奥付欠
少指汚 少色サシ
22.6x15.5cm. ¥85,000



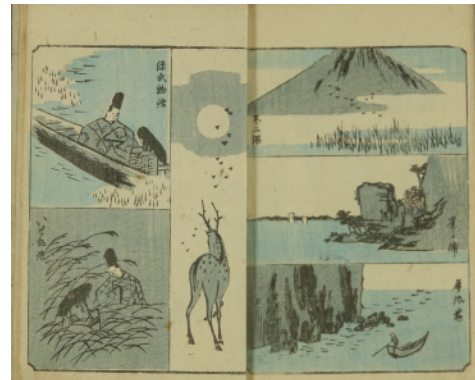
425 河村文鳳 (KAWAMURA BUMPO)
文鳳山水画譜 文政7年(1824)刊
 元表紙 元題箋 表紙少墨汚及傷
 少指汚 蔵印 25.5x17.4cm. ¥45,000



426 河村文鳳 (KAWAMURA BUMPO)
文鳳画譜 3冊揃 文化4年(1807)~10年(1813)刊
 元表紙 元題箋 各25.6x18cm. ¥300,000



427 広重 (HIROSHIGE)
立斎草筆画譜 初編 嘉永元年(1848)刊
 元表紙 元題箋 少指汚 少落書 題箋少傷
 17.9x12cm. ¥30,000



428 広重 (HIROSHIGE)
立斎草筆画譜 二編 嘉永3年(1850)刊
 元表紙 元題箋 極少指汚
 裏表紙見返少シミ 18.3x12cm. ¥35,000



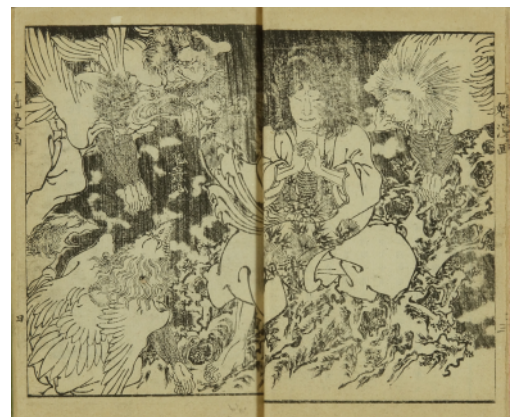
429 永濯 (EITAKU)
現今英名百首 明治14年(1881)刊
 元表紙 元題箋 序文極少破
 18x12.5cm. ¥15,000



430 為斎 (ISAI)
花鳥山水細画図式 四編 慶応2年(1866)刊
 題箋欠 極少汚 一部少シミ 一部極少虫穴 蔵印
 12x17.8cm. ¥13,000



431 重信 (SHIGENOBU)
水滸伝画譜 上 明治期 見返し少破 一部少シミ 蔵印
 22.4x15cm. ¥35,000



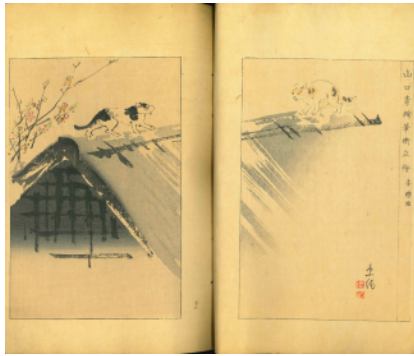
432 芳年 (YOSHITOSHI)
一魁漫画 慶応2年(1866)刊 元表紙 元題箋 序文少シミ
 17.5x11.5cm. ¥170,000

433～443 渡辺省亭編 (WATANABE SEITEI, ed)

美術世界 明治24～25年 (1891-92) 木版図版入 特記なき限り保存良 各約25x16cm.



433 巻の二
極少汚 ¥20,000



434 巻の五
極少汚 ¥20,000



435 巻の六
極少汚 ¥20,000



436 巻の七
極少汚 極少ヤケ 綴直 ¥18,000



437 巻の九 極少汚 一部極少シミ
裏表紙に番号墨書入 ¥18,000



438 巻の十
極少汚 ¥20,000



439 巻の十四
¥20,000



440 巻の十六
極少汚 一図極少シミ ¥20,000



441 巻の十九 極少汚 極少シミ
歌表紙極少破 ¥20,000



442 巻の二十一
極少汚 少シミ 極少虫 ¥20,000



443 巻の二十二
極少汚 極少シミ ¥20,000

- 1 SHIKO [CHOKI]: *Umekawa Chubei no bosetsu* (Evening snow of Uemkawa Chubei), based on the Joruri performance (Meido no hikyaku) by Chikamatsu Monzaemon, from *Joruri mitate hskkei* (Eight views of joruri parodies), c.1798--Good impression, fine condition
14.5x32cm. ¥220,000
- 2 UTAMARO: Beauty picking her teeth, from *Bijin menso juttai no uchi* (Ten types of women's physiognomies), c.1803--Good impression, fair condition. faded, soiled, toned, and worn, backed
19x12.8cm. ¥30,000
- 3 UTAMARO: *Hashira-e* (Pillar print) of a beauty and insect cage seller, c.1801--Good impression and condition, faded, soiled, and worn, lightly backed
61x11.5cm. overall ¥180,000
- 4 SHUNTEI: *Surimono* of a beauty looking up a bird perched on a plum branch, c.1818--Good impression and condition, slightly soiled
19.3x17cm. ¥70,000
- 5 EISEN: *Surimono* of a beauty preparing formal robe for the New year, c.1818--Good impression and condition, slightly soiled and creased
20.5x18.5cm. ¥55,000
- 6 EISEN: Seated oiran holding books, titled *Ukiyo ogi* (Meeting with courtesan in a floating world), c.1830--Good impression and condition, a few spot stains and minor wormhole repairs
38x26cm. ¥150,000
- 7 KUNISADA: Beauty cuddling a baby, with a square reserve with a view of Atago Shrine, from *Edo hakkei no uchi* (Eight views of Edo), c.1818--Good impression and condition, very slightly soiled, faint centerfold
38.5x26cm. ¥160,000
- 8 TOYOKUNI II: Portrait of the courtesan Matsuyama of Matsubaya, c.1818--Fair impression, good condition, a minor stain on lower right, slightly trimmed
34.8x23.5cm. ¥23,000
- 9 KUNIYOSHI: No. 2, from *Onna imagawa sugata awase* (Precepts for women and matching figures), c.1844--Good impression and condition, very slightly soiled
35.5x24.8cm. ¥30,000
- 10 TOYOKUNI III: Beauty standing by a lantern painted with centipede, subtitled *Tora* (Year of tiger), from *Junishi no uchi* (Twelve zodiacs), c.1844--Good impression and condition, very slightly soiled and stained
37.5x25.2cm. ¥55,000
- 11 TOYOKUNI III: Ushi Tenjin Shrine, Koishikawa, from *Edo meissho hyakunin bijo* (One hundred famous places and beauties of Edo), 1857--Good impression and condition, very slightly soiled, backed
35.5x24cm. ¥30,000
- 12 TOYOKUNI III: A scene of the kabuki performance *Hagoromo no matsu*, triptych, 1862--Fine impressions and condition except binding holes
37.7x26cm. each approx. ¥230,000
- 13 TOYOKUNI III: Beauties and a child before a plum tree, titled *Mutsuki* (First month), triptych, c.1848--Good impression and condition, faint centerfold
37.5x25.5cm. each approx. ¥270,000
- 14 TOYOKUNI III: Courtesan strolling under cherry tree, triptych, 1854--Good impressions and condition, very slightly soiled, a few minor wormholes and corner damage repaired with backing
36x25.5cm. each approx. ¥45,000
- 15 TOYOKUNI III: *Nijurokuya machi* (View of twenty-sixth moon), from *Junitsuki no uchi* (Twelve months), triptych, 1854--Good impressions and condition, slightly soiled and worn, a few minor wormholes and corner damage repaired with backing
36x25cm. each approx. ¥65,000
- 16 TOYOKUNI III: Genji visiting a courtesan, triptych, 1856--Good impressions and condition
37x25.2cm. each approx. ¥60,000
- 17 TOYOKUNI III: Scene of year-end cleaning, triptych, 1857--Good impressions and condition, very slightly stained, some pinhole worming, a minor wormhole repaired
36.5x25.5cm. each approx. ¥50,000
- 18 KUNICHIKA: Shinagawayu, from *Hauta toranomaki* (Secret book of hauta chant), 1863--Good impression and condition, a minute stain, lower margin narrow
36x24.5cm. ¥18,000
- 19 YOSHITOSHI: Genji and beauties on a terrace overlooking night fishing at Tsukuda Island, triptych, 1866--Good impressions and condition, a few pinhole wormings repaired
37x25.4cm. each approx. ¥400,000
- 20 YOSHITOSHI: *Adachigahara hitotsuya no zu* (A solitary house of Adachigahara), the woman's skin where rope is cutting into printed in pale blue, vertical diptych, 1885--Fine impressions and condition
37.5x25.5cm. each approx. ¥2,200,000
- 21 GINKO: *Kijo saiho no zu* (Noble ladies tailoring), triptych, 1879--Good impressions and condition, slightly stained and toned
36.5x25cm. each approx. ¥110,000
- 22 KUNIAKI: Empress preparing medical supplies for hospitals of imperial army, triptych, 1877--Good impressions and condition, very slightly soiled, some pinhole worming
37.5x26cm. each approx. ¥18,000
- 23 CHIKANOBU: Poem competition of the New Year, triptych, triptych, 1877--Good impressions and condition, very slightly soiled, venter panel very slightly stained, feint centerfold
37x25cm. each approx. ¥35,000
- 24 FUSATANE: Emperor and Empress viewing autumn leaves, triptych, c.1887--Good impressions and condition, some lower corners very slightly stained
37.7x25.5cm. each approx. ¥15,000
- 25 CHIKANOBU: *Fukiage oniwa tsuribashi enkei* (Distant view of the suspension bridge in the Fukiage garden), triptych, 1880--Good impressions and condition, a few minute wormholes, faint centerfold
37x25.4cm. each approx. ¥28,000
- 26 CHIKANOBU: Monkey performance in the inner palace, triptych, c.1887--Good impressions, fair condition, stained and toned, damages repaired
36x24.5cm. each approx. ¥18,000
- 27 CHIKANOBU: *Butokai Ueno oka kan'yu no zu* (Picture of cherry blossom viewing and dance party at Ueno), triptych, 1887--Good impressions and condition, very slightly stained
37.5x25.3cm. each approx. ¥180,000
- 28 CHIKANOBU: Beauties strolling in a garden, from *Onna reishiki ryakuzu* (Picture of etiquette for ladies), triptych, 1892--Good impressions and condition, right panel very slightly stained, lightly backed
36x24cm. each approx. ¥38,000
- 29 CHIKANOBU: *Oniwa no yozakura* (Cherry blossom in the garden in the night), from *Chiyoda no o-oku* (Inner palace of Edo Castle), triptych, 1896--Good impressions and condition, slightly faded and toned, left panel margin very slightly stained, lightly backed
36.1x25cm. each approx. ¥40,000
- 30 CHIKANOBU: *Toso* (New Year's spiced sake), from *Fujin shoreishiki no zu* (Female accomplishments), triptych, 1895--Good impressions and condition, slightly faded, very slightly stained
37.5x25cm. each approx. ¥28,000
- 31 CHIKANOBU: *Bijin kangiku no zu* (Beauties viewing chrysanthemum), triptych, 1898--Good impressions and condition, slightly stained
35.5x23.5cm. each approx. ¥30,000
- 32 CHIKANOBU: *Kyoiku yochien no zu* (View of educational kinder garden), triptych, 1899--Good impressions and condition, very slightly soiled and creased
37.1x24.5cm. each approx. ¥55,000

- 33 TOSHIKATA: *Yusan* (Sightseeing), from *Sanjurokkasen* (Thirty-six elegant selections), 1892--Good impression and condition, a few spot stains in margins
37x25cm. ¥13,000
- 34 TOSHIKATA: *Kinokogari* (Mushroom hunting), from the same series as above, 1893--Good impression and condition, very slightly stained
37x25cm. ¥13,000
- 35 TOSHIKATA: *Jijo* (Female court servant), from the same series as above, c.1891--Good impression and condition, a minor stain in left margin, faint creases
36.5x25cm. ¥13,000
- 36 TOSHIKATA: *Shibai kembutsu* (Theaters), from the same series as above, 1893--Good impression and condition, margins very slightly soiled and stained
37x25cm. ¥13,000
- 37 TOSHIKATA: *Shiohigari* (Clam digging), from the same series as above, 1893--Good impression and condition, very slightly stained
36.7x24.8cm. ¥13,000
- 38 TOSHIKATA: *Yukimi* (viewing snow), from the same series as above, 1891--Good impression and condition
37x24.6cm. ¥15,000
- 39 TOSHIKATA: *Tsujigimi* (Streetwalker), from the same series as above, 1891--Good impression and condition
37x25cm. ¥13,000
- 40 TOSHIKATA: *Kikumi* (Chrysanthemum viewing), from the same series as above, 1891--Good impression and condition, very slightly stained
37.1x25cm. ¥13,000
- 41 TOSHIKATA: *Mushi no ne* (Song of insects), from the same series as above, 1893--Good impression and condition, margins very slightly soiled, faint creases
37x24.8cm. ¥13,000
- 42 TOSHIKATA: *Amayadori* (Sheltering from rain), from the same series as above, 1893--Good impression and condition, very slightly stained, a minor oxidation crack
35.5x24.3cm. ¥13,000
- 43 TOSHIKATA: *Araigami* (Washed hair), from the same series as above, 1892--Good impression and condition, very slightly soiled and creased
37x25cm. ¥10,000
- 44 TOSHIKATA: *Tabiji* (Traveling), from the same series as above, 1892--Good impression and condition, left margin very slightly soiled and stained
37x25.1cm. ¥13,000
- 45 KUNISADA: Portrait of the actor Tsuneyama Gorokichi, c.1844--Good impression and condition
38x25.5cm. ¥80,000
- 46 TOYOKUNI III: Portrait of the sumo wrestler Hidenoyama Raigoro, c.1844--Good impression and condition, very slightly soiled, a few pinhole wormings
37.9x25.8cm. ¥35,000
- 47 TOYOKUNI III: Portrait of the sumo wrestler Araiwa Kamenosuke, 1854--Good impression and condition, a minor wormhole, backed
36.5x25cm. ¥25,000
- 48 SHUNSAI: Wrestlers entering the ring at dedicatory sumo match, 1897--Good impressions, fair condition, slightly soiled and worn, fold lines
24.8x54cm. overall ¥13,000
- 49 KUNISATO: *Ryogoku ozumo han'ei no zu* (View of prosperity of grand sumo match at Ryogoku), triptych, 1853--Good impressions and condition, a few minute wormholes
37.3x26cm. each approx. ¥300,000
- 50 SHUNCHO: A plate from *Koshoku zue juni ko* (Erotic pictures for the twelve months), c.1790--Good impression, fair condition, faded and soiled, damage repaired, fold lines
25x37.8cm. ¥70,000
- 51 SHUNCHO: A plate from the same series as above, c.1790--Good impression and condition, faded, slightly soiled, stained, and creased
26.3x38.6cm. ¥90,000
- 52 SHUNCHO: A plate from the erotic series *Imayo irokumi no ito* (Entwined colored threads of men and women of the day), c.1790--Good impression and condition, slightly soiled and creased, centerfold repaired, trimmed
25x34.2cm. ¥60,000
- 53 SHUNCHO: A plate from the same series as above, c.1790--Good impression and condition, slightly soiled and creased, centerfold repaired, touched in, trimmed
25x35cm. ¥60,000
- 54 SHUNCHO: A plate from the same series as above, c.1790--Good impression and condition, slightly soiled and creased, centerfold repaired
25x37.7cm. ¥70,000
- 55 SHUNCHO: A plate from the same series as above, c.1790--Good impression and condition, slightly soiled and creased, centerfold repaired, trimmed
25x37.6cm. ¥70,000
- 56 EIZAN: Plate I, from *E-awase kingaisho*, 1815--Good impression and condition, slightly soiled, slight damage on centerfold
25.8x37.5cm. ¥55,000
- 57 EIZAN: Plate II, from the same series as above, 1815--Good impression and condition, slightly soiled, slight damage on centerfold
25.9x37.6cm. ¥55,000
- 58 EIZAN: Plate IV, from the same series as above, 1815--Good impression and condition, slightly soiled, slight damage on centerfold
25.9x37.6cm. ¥55,000
- 59 EIZAN: Plate V, from the same series as above, 1815--Good impression and condition, slightly soiled, slight damage on centerfold
25.9x37.8cm. ¥60,000
- 60 EIZAN: Plate VI, from the same series as above, 1815--Good impression and condition, slightly soiled, slight damage on centerfold
25.9x37.7cm. ¥55,000
- 61 EIZAN: Plate VII, from the same series as above, 1815--Good impression and condition, slightly soiled, slight damage on centerfold
25.8x37.7cm. ¥55,000
- 62 EIZAN: Plate IIX, from the same series as above, 1815--Good impression and condition, slightly soiled, slight damage on centerfold
25.8x37.5cm. ¥55,000
- 63 EIZAN: Plate IX, from the same series as above, 1815--Good impression and condition, slightly soiled, slight damage on centerfold
26x37.6cm. ¥55,000
- 64 EIZAN: Plate XI, from the same series as above, 1815--Good impression and condition, slightly soiled, slight damage on centerfold
25.8x37.7cm. ¥55,000
- 65 KUNISADA: *Enshi gojuyojo* (Amorous Murasaki finds pleasure in fifty-some chapters): three vols., complete, c.1830, original covers and title slips, fine impression, very slight finger soiling, a few minor wormholes, some pages with offset stain
25.7x18cm. each approx. ¥3,500,000
- 66 KUNIYOSHI: *Hanagoyomi* (Calendar of flower): three vols., complete, 1835, original covers and title slips, covers slightly soiled, vol. 1 with some wormholes
22x15.5cm. each ¥1,300,000
- 67 KUNIYOSHI: *Hana ikada*: three vols., complete, 1836, original covers and title slips, very slight finger soiling, some pages very slightly stained, covers very slightly soiled
22.3x15.5cm. each ¥950,000
- 68 UTAMARO: *Ehon tsukumanabe*: Kitagawa Utamaro, *illustrator*, three vols., complete, 1798, original covers and title slips, covers very slightly worn, slight finger soiling
21.5x15cm. each ¥650,000

- 69 TOYOKUNI: *Oyogari no koe*: three vols., complete, 1822, original covers and title slips, slight finger soiling, covers slightly worn
22x15.5cm. each ¥950,000
- 70 HOKUSAI: Kawasaki, from *Shunko gojusan eki* (Spring of the fifty-three stations [of the Tokaido]), c.1801--Fine impression and condition except a minute wormhole on top left
13x17.8cm. ¥80,000
- 71 HOKUSAI: Kanagawa, from the same series as above, c.1801--Fine impression and condition
13x17.7cm. ¥90,000
- 72 HOKUSAI: Kanaya, from *Tokaido gojusan tsugi* (the Fifty-three stations of the Tokaido), c.1804--Good impression and condition, slightly soiled, backed
22.5x16.5cm. ¥140,000
- 73 EISEN: *Nihonbashi no seiran* (Clear sky after rain at Nihonbashi), from *Edo hakkei* (Eight views of Edo), c.1844--Good impression and condition, very slightly soiled, some minor wormholes repaired
25.5x37.1cm. ¥250,000
- 74 HIROSHIGE: Hamamatsu, from *Tokaido* ([the Fifty-three stations of the] Tokaido), published by Tsutaya, c.1848--Good impression and condition, tape residue on verso
18x24.8cm. ¥35,000
- 75 HIROSHIGE: Hamamatsu, from the same series as above, c.1848--Good impression and condition, very slightly soiled, very slightly soiled, tape residue on verso
17.9x25cm. ¥38,000
- 76 HIROSHIGE: Kawasaki, Station 3, from (the fifty-three stations of the) *Tokaido* (the 'Reisho' Tokaido), c.1848--Good impression and condition, very slightly soiled, a minor wormhole repaired, faint centerfold, narrow margins
23.6x36cm. ¥280,000
- 77 HIROSHIGE: Meguro Fudo Shrine, from *Edo meisho* (Famous places of Edo), published by Sanoya Kihei, c.1832--Good impression and condition, very slightly soiled
26x37.6cm. ¥100,000
- 78 HIROSHIGE: *Sumidagawa zutsumi Mukojima no zu* (View of Mukojima at Sumida Riverbank), from *Shinsen Edo meisho* (Newly selected famous places of Edo), c.1839--Good impression and condition, a few pinhole wormings
24.8x36.7cm. ¥220,000
- 79 HIROSHIGE: Sazai Hall, Gohyaku rakan Temple, from *Meisho Edo hyakkei* (One hundred views of famous places of Edo), 1856--Fine impression, good condition
36.5x24.8cm. ¥450,000
- 80 HIROSHIGE: Yoshiwara, Nihon zutsumi (Nihon Embankment, Yoshiwara), from the same series as above, 1857--Good impression and condition, a few pinhole wormings, slight backing residue
36x24.3cm. ¥450,000
- 81 HIROSHIGE: *Asukayama hanazakari* (Cherry blossom in full bloom at Asukayama), from *Toto meisho* (Famous places of the eastern capital), c.1839--Good impression and condition, margins slightly stained, faint fold lines
23.5x36cm. ¥38,000
- 82 HIROSHIGE II: *Shokoku Mutamagawa* (Six Jewel Rivers of provinces), six sheets, complete, 1863--Good impression and condition, some sheets very slightly stained
37.1x25.5cm. each approx. ¥300,000
- 83 SADATORA: Enoshima seen from Shichirigahama, triptych, c.1833--Good impressions and condition, a few minor wormholes, right panel slightly soiled and worn
38.2x26cm. each approx. ¥350,000
- 84 YOSHITORA: *Eitaibashi kihan* (Returning sail to Eitai Bridge), from *Toto meisho hakkei no uchi* (Eight views of famous places of Edo), 1854--Good impression and condition, very slightly soiled
25.2x37cm. ¥38,000
- 85 YOSHIKAZU: *Gogakoku jin Yokohama joriku zu* (View of foreigners from five countries land Yokohama), triptych, 1861--Fair impressions, good condition, slight ink smudge, fold line along edges
36.4x25.2cm. each approx. ¥80,000
- 86 YOSHIKAZU: *Yokohama jin yashiki no zu* (View of foreigners' residence in Yokohama), triptych, 1861--Good impressions and condition, faint fold line along edges
36.3x25.3cm. each approx. ¥120,000
- 87 YOSHITORA: View of Nanjing, from *Bankoku meisho zukushi kurabe no uchi* (Comparison of famous views around the world), triptych, 1862--Good impression and condition, faint fold lines
36.3x25cm. each approx. ¥70,000
- 88 YOSHITORA: View of London, triptych, 1862--Good impressions and condition, fold line along edges
36.5x25.5cm. each approx. ¥95,000
- 89 YOSHITORA: British, 1863--Fair impression, good condition
36.3x24cm. ¥30,000
- 90 YOSHITORA: Russian, 1863--Fair impression, good condition, slight ink smudge
36.4x25cm. ¥25,000
- 91 YOSHITORA: Russian, 1863--Fair impression, good condition, very slight ink smudge
36.3x24.8cm. ¥30,000
- 92 YOSHITORA: Chinese, 1863--Fair impression, good condition
36.1x24cm. ¥25,000
- 93 NAGASAKI SCHOOL: A Chinese family enjoying an evening cool--Good impression and condition, very slightly soiled
31.4x21.5cm. ¥70,000
- 94 TOSHIMOTO: Storm at north sea, and rain at Yamagibashi, from *Dai Nihon meisho shashin* (True sketch of famous places of Japan), c.1877--Good impression and condition, slightly creased
37.4x25.5cm. ¥50,000
- 95 TOSHIMOTO: Night view of Jianji, and dawn at Shokonsha, Osaka, from the same series as above, c.1877--Good impression and condition, very slight damage on top
37.2x25cm. ¥50,000
- 96 HIROSHIGE III: Shiodome Station, from *Tokyo meisho zue* (Famous places of Tokyo), 1874--Fair impression, good condition, a minor tear repaired
25x37.6cm. ¥15,000
- 97 HIROSHIGE III: Making *nori* (dried seaweed sheet) at Asakusa, Musashi Province, from *Dai Nippon bussan zue* (Pictures of famous products of Japan), 1877--Good impression and condition, very slightly stained, centerfold
17.5x24cm. ¥20,000
- 98 HIROSHIGE III: Net fishing of snapper and yellowtail, Awaji Province, from the same series as above, 1877--Good impression and condition, small tear on lower left corner, backed
17x23.8cm. ¥12,000
- 99 HIROSHIGE III: Snapper fishing, Awaji Province, from the same series as above, 1877--Good impression and condition, centerfold
17.5x23.8cm. ¥14,000
- 100 HIROSHIGE III: Uncut sheet of Hakozaki, Chikuzen Province and Mount Byobu by Chikugo River, Chikugo Province from *Nihon chishi ryakuzu* (Topographical sketches of Japan), 1876--Good impression and condition
37x25.4cm. ¥25,000
- 101 KIYOCHIKA: *Edobashi yugure Fuji* (Mount Fuji in the twilight, seen from Edo Bridge), from *Tokyo meisho* (Famous places of Tokyo), 1879--Fine impression and condition except minute wormhole and a spot soiling in upper margin
24.7x36.7cm. ¥450,000
- 102 KIYOCHIKA: Night rain at Yanagihara, from the same series as above, 1881--Good impression and condition, slightly faded and soiled, centerfold
24.6x34.8cm. ¥150,000
- 103 KIYOCHIKA: Kinokuni Hill, Akasaka, from the same series as above, 1880--Fine impression and condition
24.9x36.5cm. ¥350,000

- 104 KIYOCHIKA: Before Makura Bridge, Sumida River, from the same series as above, 1880--Good impression and condition, slightly soiled, very slightly toned, centerfold 24.1x34.4cm. ¥60,000
- 105 KIYOCHIKA: Horse racing at Kudan, from the same series as above, 1881--Good impression and condition, right margin slightly stained, left margin narrow, centerfold 23.5x32.5cm. ¥80,000
- 106 KIYOCHIKA: Edomi Hill, illustrating Echigo lion dance, from *Musashi hyakkei no uchi* (One hundred views of Musashi Province), 1884--Fine impression and condition 36x24.5cm. ¥150,000
- 107 RYUSON: *Yatsuyama no kei* (View of Yatsuyama), 1880--Good impression and condition, centerfold, binding holes 23.8x35cm. ¥1,500,000
- 108 RYUSON: *Yushima no kei* (View of Yushima), varnished, 1880--Good impression and condition, slightly soiled, creased, backed 23.5x36cm. ¥300,000
- 109 GYOKUEI: Fan print of Mount Fuji seen over Tokyo Bay, c.1889--Good impression and condition, very slightly soiled 25x24.8cm. ¥7,000
- 110 KUNITOSHI: Scenes of sericulture, five sheets complete, 1881--Good impressions and condition, very slightly soiled, some minute wormholes repaired, fold line along edges 36x24.8cm. each approx. ¥60,000
- 111 NISHIO KEIJI: Silk mill at Kanazawa, Kaga Province, triptych, c.1874--Good impressions and condition, very slightly worn, very slightly stain on center panel, ownership seal 34.5x23.8cm. each approx. ¥500,000
- 112 TOSHITADA: View of Azuma Bridge, Asakusa, and man-made model of Mount Fuji, triptych, 1887--Good impressions and condition, very slightly soiled, stained, and worn, centerfold 36.5x25cm. each approx. ¥55,000
- 113 CHIKANOBU: *Ueno Shinobazu keiba no zu* (View of house racing at Shinobazu Pond), triptych, 1885--Good impressions and condition, very slightly soiled, a minute repair to a hole where oxidized on right panel 37x25cm. each approx. ¥35,000
- 114 TANKEI: *Kampeishiki gyoko zu* (Emperor observing a military parade), triptych, 1885--Good impressions and condition, foldlines 36.7x25.4cm. each approx. ¥45,000
- 115 TANKEI: Meiji Emperor's carriage before Sakurada Gate of the Imperial Palace, triptych, 1888--Good impressions and condition, faint centerfold 36.6x25.5cm. each approx. ¥45,000
- 116 NOBUKAZU: *Teikoku kokkai gijido no zu* (View of the Diet Building of imperial Japan), triptych, 1890--Good impressions and condition, lower left corner chipped 37.1x24.8cm. each approx. ¥18,000
- 117 KOKUNIMASA: Emperor's silver anniversary, triptych, 1894--Good impressions and condition 36.5x24.8cm. each approx. ¥15,000
- 118 YOSAI: Statue of Kusunoki Masashige before Nijubashi at the imperial palace, triptych, 1899--Good impressions and condition, very slightly stained, a few minute wormholes, a small tear on left panel repaired 37x25cm. each approx. ¥13,000
- 119 YOSHITOSHI: Poem by Takao, from *Tsuki hyakushi* (One hundred aspects of the moon), 1885--Good impression and condition, paper thinned, narrow margins 35.1x23.5cm. ¥50,000
- 120 YOSHITOSHI: *Gionmachi* (Gion District), from the same series as above, 1885--Good impression and condition, slightly toned, very slightly stained, narrow margins 35.6x27.7cm. ¥60,000
- 121 YOSHITOSHI: *Inabayama no tsuki* (Moon at Mount Inaba), from the same series as above, 1885--Good impression and condition, very slightly toned 36.2x24.2cm. ¥80,000
- 122 YOSHITOSHI: *Asanogawa seisetsu no tsuki, Kojo Chikako* (Moon of pure snow at Asano River -Chikako, the faithful daughter), from the same series as above, 1885--Good impression and condition, very slightly toned, lower margin narrow 35.8x23.8cm. ¥300,000
- 123 YOSHITOSHI: Itsukushima Moon, Courtesan Muro, from the same series as above, 1886--Good impression and condition, some minute wormholes repaired 36x24.3cm. ¥80,000
- 124 YOSHITOSHI: Chikubujima Moon, Tsunemasa, from the same series as above, 1886--Good impression and condition, very slightly stained and toned, some margins narrow 35.6x23.7cm. ¥80,000
- 125 YOSHITOSHI: *Shinji no zangetsu* (Dawn moon of the shinto rites), from the same series as above, 1886--Good impression and condition, lower margin narrow 35.8x23.8cm. ¥90,000
- 126 YOSHITOSHI: *Shinkan no tsuki* (Moon's inner vision), Taira no Tomomune, from the same series as above, 1886--Good impression and condition, lightly backed 36.4x24.5cm. ¥60,000
- 127 YOSHITOSHI: Takakura moon, Hasebe Nobutsura, from the same series as above, 1886--Good impression and condition, very slightly soiled and toned, some margins narrow, light backing residue 36.2x23.5cm. ¥50,000
- 128 YOSHITOSHI: *Kaimami no tsuki* (A glimpse of the moon), from the same series as above, 1886--Good impression and condition, very slightly stained and toned, some margins narrow, backed 35.5x23.7cm. ¥70,000
- 129 YOSHITOSHI: Fujiwara no Kinto, from the same series as above, 1887--Good impression and condition, very slightly soiled and toned, some margins narrow 35.2x23.4cm. ¥50,000
- 130 YOSHITOSHI: *Yasurawade...*, poem by Akazome Emon, from the same series as above, 1887--Good impression and condition, a pinhole, some margins narrow 35.6x23.8cm. ¥70,000
- 131 YOSHITOSHI: *Inamuragasaki no akebono no tsuki* (Moon at dawn at Inamura Promontory), from the same series as above, 1886--Good impression and condition, slightly soiled, very slightly stained, fold line in left margin, lower margin trimmed 35x24.6cm. ¥50,000
- 132 YOSHITOSHI: Moon of enemy's lair, from the same series as above, 1887--Good impression and condition, lower margin narrow, right margin trimmed 35.2x23.8cm. ¥60,000
- 133 YOSHITOSHI: *Waisui no tsuki, Goshisho* (Huai River moon, Wu Zixu), from the same series as above, 1887--Good impression and condition, very slightly stained, some margins narrow, lightly backed 35.8x23.7cm. ¥60,000
- 134 YOSHITOSHI: *Gosechi no Myobu* (Lady Gosechi), from the same series as above, 1887--Good impression and condition, upper margin very slightly soiled 37.2x25.1cm. ¥60,000
- 135 YOSHITOSHI: Poem by Wang Changling, from the same series as above, 1887--Good impression and condition 36x24.4cm. ¥70,000
- 136 YOSHITOSHI: Poem by Gen'i, from the same series as above, 1887--Good impression and condition, some corners chipped 36.5x24.6cm. ¥60,000
- 137 YOSHITOSHI: *Dokusho no tsuki, Shiraku* (Reading by the moon, Zi Luo), from the same series as above, 1888--Good impression and condition, right margin very slightly stained, some corners chipped 36.5x24.5cm. ¥50,000
- 138 YOSHITOSHI: Poem by Minamoto no Yorimasa, from the same series as above, 1888--Good impression and condition, red pigment bleed, some corners chipped 36.5x24.5cm. ¥60,000

- 139 YOSHITOSHI: In the moonlight under the trees a beautiful woman comes, from the same series as above, 1888--Good impression and condition, slightly stained and toned, lightly backed
35.6x23.6cm. ¥80,000
- 140 YOSHITOSHI: Katada Bay moon, Saito Kuranosuke, from the same series as above, 1888--Good impression and condition, lightly backed
36x24.3cm. ¥80,000
- 141 YOSHITOSHI: *Sesonji no tsuki*, Hosho Yoshikata (Moon at Seson Temple, Captain Yoshitaka), from the same series as above, 1888--Good impression and condition, very slightly toned, a few pinholes worming in right margin
36.1x24.3cm. ¥50,000
- 142 YOSHITOSHI: Joganden moon, Minamoto no Tsunemoto, from the same series as above, 1888--Good impression and condition, slightly soiled, stained, and toned, some margins narrow
35.6x23.5cm. ¥40,000
- 143 YOSHITOSHI: *Sekiheki no tsuki* (Moon at the red wall), from the same series as above, 1889--Good impression and condition, pinholes on corners
36.5x24.4cm. ¥50,000
- 144 YOSHITOSHI: *Uchu no tsuki* (Rainy moon), Kojima Takanori, from the same series as above, 1889--Good impression and condition, slight offset stain, some corners chipped
36.6x24.5cm. ¥70,000
- 145 YOSHITOSHI: Toyotomi Hidetsugu, from the same series as above, 1889--Good impression and condition, slight offset stain, some corners chipped, slight damage on lower right
36.7x24.6cm. ¥70,000
- 146 YOSHITOSHI: Mount Ashigara moon, Yoshimitsu, from the same series as above, 1889--Good impression and condition, very slightly soiled, stained, and toned, some margins narrow
35.6x23.8cm. ¥50,000
- 147 YOSHITOSHI: Akashi Gidayu, from the same series as above, 1889--Good impression and condition, very slightly stained and toned, some margins narrow
35.6x23.8cm. ¥60,000
- 148 YOSHITOSHI: *Hitotsuya no tsuki* (Moon of the lonely hut at Asajigahara), from the same series as above, 1890--Good impression and condition, very slightly toned, left margin trimmed
35.4x23.9cm. ¥120,000
- 149 YOSHITOSHI: Poem by Taira no Tadanori, from the same series as above, 1890--Good impression and condition, some corners chipped
36.6x24.5cm. ¥60,000
- 150 YOSHITOSHI: *Tsuki no hatsume* (Invention from the moon), Hozoin, from the same series as above, 1891--Good impression and condition
36x24.5cm. ¥80,000
- 151 YOSHITOSHI: *Okina* (Old man), from the same series as above, 1891--Good impression and condition, very slightly soiled, a minor offset stain, some margins narrow, ownership seal
35.3x23.2cm. ¥40,000
- 152 YOSHITOSHI: Poem by Mizuki Tatsunosuke, from the same series as above, 1891--Good impression and condition, very slightly soiled, some corners chipped
36.5x24.4cm. ¥80,000
- 153 YOSHITOSHI: *Obasute no tsuki* (Moon and the abandoned old woman), from the same series as above, 1891--Good impression and condition, very slightly soiled and toned
35.8x23.7cm. ¥50,000
- 154 YOSHITOSHI: *Musashino no tsuki* (Musashi Plain moon), from the same series as above, 1891--Good impression and condition, slightly faded
35.7x24.2cm. ¥300,000
- 155 YOSHITOSHI: *Sarugaku no tsuki* (Monkey-music moon), from the same series as above, 1891--Good impression and condition, wormholes repaired with backing
36x24.3cm. ¥30,000
- 156 YOSHITOSHI: *Ideshio no tsuki* (The moon at high tide), from the same series as above, 1892--Good impression and condition, some margins narrow
35.6x23.7cm. ¥50,000
- 157 YOSHITOSHI: Enjo Kihachiro, from *Eimei nijuhasshuku* (Twenty-eight forms of murders with verse), 1867--Good impression and condition, a few minute wormholes repaired, slight damage along edges, tape residue on verso, faint vertical foldline
36.5x24.5cm. ¥70,000
- 158 YOSHIKU: Enjo Jizaemon, from the same series as above, ash from the basket sprinkled with gofun, 1867--Good impression and condition, lightly backed, slightly trimmed
35x24cm. ¥80,000
- 159 KUNIYOSHI: Mount Fuji seen from offshore Takanawa, with a portrait of Nogitsunebei, from *Nanatsu iroha, Toto Fuji zukushi* (Alphabets in seven styles, with views of Mount Fuji seen from the eastern capital), 1852--Good impression and condition, slightly trimmed on lower left
35.8x25cm. ¥35,000
- 160 KUNIYOSHI: Mount Fuji seen from Asakusa, with a portrait of Yugiri, from the same series as above, 1852--Good impression and condition, slightly soiled, very slightly stained on lower right
36.6x25cm. ¥30,000
- 161 KUNIYOSHI: Mount Fuji seen from Ommayagashi, with a portrait of Endo Musha, from the same series as above, 1852--Good impression and condition
36.8x25cm. ¥38,000
- 162 KUNIYOSHI: Portrait of actor Nakamura Utaemon IV and Iwai Kumesaburo III, 1848--Good impression and condition, a few minor wormholes and binding holes repaired, fold line along left margin repaired, lower margin trimmed
36.6x25.3cm. ¥18,000
- 163 KUNISADA: A scene of a kabuki performance, diptych, 1829--Good impressions and condition, very slightly soiled, binding holes
37.6x25.5cm. each approx. ¥25,000
- 164 TOYOKUNI III: Portraits of eight actors, titled *Ume goyomi Mitate hasshojin* (Parody of eight rising actors), 1859--Good impression and condition
37.8x25.5cm. ¥35,000
- 165 TOYOKUNI III: Tsuchiyama, from *Tokaido gojusan tsugi no uchi* (the Fifty-three stations of the Tokaido), 1852--Good impression and condition, slight damage along left edge, slightly trimmed
34.3x23.9cm. ¥13,000
- 166 TOYOKUNI III: A scene of a kabuki performance, triptych, 1858--Fine impression, good condition, minute damage on upper corners
37.4x25.5cm. each approx. ¥50,000
- 167 TOYOKUNI III: Bust portrait of the actor Nakamura Kajaku, from *Imayo oshi-e kagami* (Mirror of modern oshi-e), 1860--Good impression and condition, very slightly toned
38.5x26.8cm. ¥50,000
- 168 TOYOKUNI III: Bust portrait of the actor Ichikawa Shinsha, from the same series as above, 1860--Fine impression, good condition
39.5x27.5cm. ¥55,000
- 169 TOYOKUNI III: Bust portrait of the actor Bando Muraemon, from the same series as above, 1860--Fine impression and condition
39.2x26.7cm. ¥45,000
- 170 TOYOKUNI III: Bust portrait of the actor Nakamura Shijaku, from the same series as above, 1860--Fine impression, good condition, very slightly stained
39.1x26.9cm. ¥45,000
- 171 TOYOKUNI III: Bust portrait of the actor Asao Yoroku, from the same series as above, 1860--Good impression and condition, very slightly stained
39x27cm. ¥45,000

- 172 TOYOKUNI III: Actors in the role of braveries, triptych, 1863--Good impressions and condition, very slightly soiled, binding holes repaired
36x25.5cm. each approx. ¥400,000
- 173 KUNICHIKA: Actor Kazarazaki Mimasu and Sawamura Tanosuke, 1863--Good impression and condition, very slightly soiled
35.7x25cm. ¥80,000
- 174 KUNICHIKA: *Mitate shiranami hakkei* (Parody of eight bandit performances of kabuki), eight sheets, complete, 1865--Good impressions and condition, very slightly soiled, some sheets with a few minute wormhole repair, one sheet with slight crease
37.5x25.5cm. each approx. ¥550,000
- 175 KUNICHIKA: A scene of the kabuki performance Hatsu karigane geisha no hyoban, triptych, 1871--Good impressions and condition, a pinhole worming on left panel
36.9x25cm. each approx. ¥20,000
- 176 KUNICHIKA: Actor Iwai Hanshiro in the role of the celestial maiden, subtitled Suruga [Province], Miho, from *Fuji sanjurokkei* (Thirty-six views of Mount Fuji), 1876--Good impression and condition, very slightly soiled
36.6x24.5cm. ¥88,000
- 177 KUNICHIKA: A scene of a kabuki performance, triptych, 1887--Good impressions and condition, slightly creased
37x25cm. each approx. ¥15,000
- 178 CHIKANOBU: A scene of a kabuki performance, triptych, 1880--Good impressions and condition, very slightly stained on some top corners
37x24.8cm. each approx. ¥15,000
- 179 KUNICHIKA: Portrait of the actor Ichikawa Danjuro in the role of Yoshida Matsuwaka, subtitled *Oka* (Cherry blossom), from *Junikagetsu Hana awase* (Collection of flowers of twelve months), *chirimen-e* (Creped picture), 1877--Good impression and condition, tape residue on verso
36x20cm. ¥12,000
- 180 YOSHIIKU: Portrait of the actor Nakamura Shikan in the role of Shibyashi dancer Hanako, from *Haiyu shashin kagami* (Photography of actors), varnished, 1870--Good impression and condition, lower margin trimmed, lightly backed
36x24cm. ¥160,000
- 181 KUNIUME: Scene of the kabuki performance, *Shisenryo koban no umenoha*, also titled *Chiyodajo uwasa no shiranami*, vertical diptych, 1885--Good impressions and condition, very slightly soiled and stained, slightly toned
37x25cm. each approx. ¥150,000
- 182 KUNIMASA IV: A scene of a kabuki performance, triptych, 1887--Good impressions and condition, very slightly soiled, very slight damage along edges
36.7x24.5cm. each approx. ¥15,000
- 183 KUNIMASA IV: A scene of a kabuki performance, triptych, 1888--Good impressions and condition, very slightly soiled
37x25cm. each approx. ¥15,000
- 184 KUNICHIKA: A scene of a kabuki performance, triptych, 1893--Good impressions, fair condition, slightly soiled, toned, and damaged
36.3x25.3cm. each approx. ¥18,000
- 185 KUNICHIKA: Battle scene at Daidoko, a new kyogen performance at Meiji Theater, triptych, 1894--Good impressions and condition, slight oxidation stain and crack
37.2x25cm. each approx. ¥18,000
- 186 ARTIST UNKNOWN: Woodblock carved with takarabune
29x41x2cm. ¥60,000
- 187 YOSHITORA: Ebisu, Daikokum and "Tree of money"--Good impression and condition, slightly soiled, toned
35.8x24.2cm. ¥20,000
- 188 KUNISADA: Ebisu and Daikoku under the "Tree of money", vertical diptych, c.1844--Good impression and condition, very slightly soiled and stained, slightly toned
33.7x22.8cm. each approx. ¥35,000
- 189 KYOSAI: A tower of auspicious figures, vertical diptych, c.1887--Good impressions, fine condition
37.4x26.5cm. each approx. ¥90,000
- 190 KYOSAI: No. 10 from *Gyosai rakuga* (Gyosai scribble), 1874--Good impression and condition, very slightly soiled
37.6x24.7cm. ¥230,000
- 191 YOSHITOSHI: An uncut sheet from *Tokyo kaika kyoga meisho* (Comic pictures of famous places of civilized Tokyo), illustrating Fox at Mimeguri Shrine, Horse racing at Yasukuni Shrine, 1881--Good impression, fine condition
36.6x24.5cm. ¥25,000
- 192 KUNIYOSHI: Actors playing ken game, titled *Sangoku-ken*, c.1848--Good impression and condition, very slightly soiled and stained, slight damage along edges
37.9x25.9cm. ¥50,000
- 193 YOSHITSUYA: Actors playing ken game, titled Ryuko kitsune-ken, 1861--Good impression and condition, very slightly soiled, a few pinhole worming
37.8x25.8cm. ¥50,000
- 194 YOSHIIKU: Actors playing ken game, titled *Hatsune-ken*, 1861--Good impression and condition
37x25.3cm. ¥50,000
- 195 UNSIGNED: *Namazu-e* (Catfish picture or earthquake picture), 1855--Good impression and condition, slightly soiled and worn
24.2x36cm. ¥80,000
- 196 UNSIGNED: *Namazu-e* (Catfish picture or earthquake picture), 1855--Good impression and condition, slightly soiled, slightly damaged along edges
36.5x25.5cm. ¥90,000
- 197 UNSIGNED: *Namazu-e* (Catfish picture or earthquake picture), 1855--Good impression and condition, soiled and worn
36.8x24.7cm. ¥80,000
- 198 UNSIGNED: *Namazu-e* (Catfish picture or earthquake picture), illustrating a giant catfish squirting money, 1855--Good impression and condition
37x24.2cm. ¥330,000
- 199 UNSIGNED: *Namazu-e* (Catfish picture or earthquake picture), illustrating catfish and demon chanting hauta, 1855--Good impression and condition
36.4x24.4cm. ¥90,000
- 200 UNSIGNED: *Namazu-e* (Catfish picture or earthquake picture), 1855--Good impression and condition, slightly soiled, stained, and damaged
36.7x24.5cm. ¥80,000
- 201 KOKUNIMASA: Scene of tsunami at Sanriku area after earthquake, four sheets, complete, 1896--Good impressions and condition, very slightly stained, slight damage along edges, slightly trimmed
35.2x23.5cm. each approx. ¥260,000
- 202 YOSHITOSHI: *Yubin Hochi* Newspaper, No. 491, 1874--Good impression and condition
37.3x25cm. ¥20,000
- 203 YOSHITOSHI: No. 832, from the same series as above, c.1875--Good impression and condition, binding holes, right margin trimmed
35.8x23.8cm. ¥98,000
- 204 YOSHITOSHI: Nishikori Takekiyo, from *Kinsei jimbutsushi* (Stories of modern figures), 1887--Good impression and condition, very slightly soiled
37x25.2cm. ¥18,000
- 205 YOSHIIKU: *Tokyo nichu-nichi shimbun* (Tokyo daily newspaper), No. 322, 1874--Good impression and condition
36.2x24.5cm. ¥20,000
- 206 YOSHIIKU: No. 849, from the same series as above, c.1875--Good impression and condition
36.5x24.6cm. ¥20,000
- 207 YOSHIIKU: No. 940, from the same series as above, No. 940, 1874--Good impression and condition
36.5x24.6cm. ¥20,000
- 208 TOYOKUNI III: *Sugoroku* game of yakunin-issu (One-hundred poems by one-hundred poets), c.1844--Good impression, fair condition, soiled, stained, worn, and damaged
52x75cm. overall ¥50,000

- 209 YOSHIKU: *Sugoroku* game of fortunetelling, 1860--Good impression, fair condition, slightly soiled, stained, and damaged, backed
59.5x71.5cm. overall ¥18,000
- 210 YOSHIKAZU: *Sugoroku* game of warriors of Genji and Heike clan, with wrapper, 1860--Good impressions, fair condition, slightly soiled, damaged
36x72cm. overall ¥30,000
- 211 KUNICHIKA: *Sugoroku* game of heroes ascending a temple gate, six sheets, complete, 1865--Good impressions and condition, slightly faded and toned, some minor damages repaired, backed
90x108cm. ¥150,000
- 212 YOSHITORA: *Sugoroku* game of warriors, four sheets, with wrapper, 1866--Good impressions and condition, slightly soiled and worn
49x72cm. overall ¥50,000
- 213 KUNICHIKA: *Sugoroku* game of comical Tokaido, with wrapper, 1864--Good impressions and condition, slightly soiled, stained, and worn
60x71cm. ¥70,000
- 214 SHUNGYO: *Sugoroku* game of bicycle, with *koma* (pieces) as bicycle, with wrapper which is pasted on verso, 1888--Good impression and condition
37.3x50cm. ¥120,000
- 215 CHIKANOBU: *Sugoroku* game of *Onna reishiki* (Picture of etiquette for ladies), with wrapper, 1888--Good impression and condition, very slightly stained, wrapper slightly soiled
74x49.5cm. each approx. ¥60,000
- 216 KOKUNIMASA: *Sugoroku* game of the lieutenant colonel Fukushima Yasumasa's single-horse journey to Siberia, with paper wrapper, 1893--Good impression and condition
49x72cm. overall ¥60,000
- 217 CHIKANOBU: *Sugoroku* game of *Onna reishiki* (Etiquette for ladies), with wrapper, 1896--Fair impression, good condition
73.5x49.5cm. overall ¥90,000
- 218 KUNITOSHI: Collection of fish, 1889--Fair impression, good condition
24.8x33.5cm. ¥7,000
- 219 UNSIGNED: Shimpan uo zukushi (Newly published, collection of fish), Meiji Period--Fair impression, good condition, centerfold
36.5x24.8cm. ¥10,000
- 220 SADANOBU II: Miniature model of a *mikoshi* (Portable shrine), Meiji Period--Good impression and condition
38.9x26cm. ¥25,000
- 221 UNSIGNED: Miniature stage model of the kabuki performance *Gion sairei shinkoki*, four sheets, complete, 1898--Good impressions and condition
39.3x26.5cm. each approx. ¥50,000
- 222 UNSIGNED: Miniature stage model of the kabuki performance *Hagoromo*, three sheets, complete, 1898--Good impressions and condition
39.5x26.4cm. each approx. ¥35,000
- 223 UNSIGNED: Miniature stage model of the kabuki performance *Adachigahara*, three sheets, complete, 1908--Good impressions and condition
39.5x26.5cm. each approx. ¥35,000
- 224 YOSHITORA: Night attack by Kumasaka Chohan, triptych, 1860--Good impressions and condition, a few minute wormholes, upper left corner of left panel torn
36.3x25.5cm. each approx. ¥120,000
- 225 YOSHIKAZU: Priest Benkei putting a notice board before a cherry tree in Minamoto no Yoshitsune's camp in Suma temple, Harima Province, triptych, 1858--Good impressions and condition, very slightly soiled and worn
37x24.8cm. each approx. ¥90,000
- 226 SADAHIDE: Battle of Ichinotani, triptych, c.1848--Good impressions and condition, very slightly stained, slightly worn, some minute wormholes repaired
37.4x25cm. each approx. ¥65,000
- 227 KUNIYOSHI: Battle between Minamoto and Taira Clan, triptych, c.1830--Good impressions and condition, very slightly soiled, slightly worn, faint centerfold
37.5x26.5cm. each approx. ¥80,000
- 228 YOSHITSUYA: Emperor Antoku's ship at the battle at Dannoura, 1859--Good impressions and condition, slightly and worn
36.5x25cm. each approx. ¥55,000
- 229 SADAHIDE: Procession of Minamoto no Yoritomo to Kyoto, triptych, c.1844--Good impressions and condition
36.8x24.8cm. each approx. ¥70,000
- 230 YOSHITORA: Minamoto Yoritomo's conquest of Mutsu Province, triptych, c.1844--Good impressions and condition, very slightly soiled, slightly worn
37.3x25cm. each approx. ¥58,000
- 231 GINKO: Kesa Gozen, from *Kokon meifu kagami* (Mirror of famous women of present and past), 1886--Good impression and condition, very slightly soiled and worn
36.9x25.4cm. ¥18,000
- 232 SHOGETSU: Cherry blossom and Shizuka Gozen, from *Hana kurabe homare nishiki* (Comparison of flowers and famous figures on brocade pictures), 1889--Fine impression, good condition, very slightly soiled and toned
36.8x25cm. ¥13,000
- 233 YOSHITOSHI: Sato Tadanobu fighting at Yoshino after fleeing Minamoto no Yoshitsune, titled *Yoshino no yuki* (Snow at Yoshino), from Buyu setsugekka no uchi (Snow, moon and flower with heroes), triptych, 1867--Good impressions and condition, lower corners on right panel very slightly soiled
37x25.5cm. each approx. ¥450,000
- 234 KUNIYOSHI: Night attack of Soga Brothers, triptych, c.1844--Good impressions and condition, slightly soiled, worn, and trimmed, a few minor wormholes repaired, faint centerfold
36x25.5cm. each approx. ¥110,000
- 235 YOSHITORA: Battle of Wada, triptych, c.1848--Good impressions and condition, damage along edges repaired, centerfold
36.5x25.2cm. each approx. ¥45,000
- 236 YOSHIKAZU: Battle scene from *Taiheiki* (Tale of grand pacification), triptych, 1856--Good impressions and condition, tear on center panel restored
36x25.2cm. each approx. ¥45,000
- 237 YOSHITORA: Battle of Kuzuidera, a scene of *Taiheiki* (Tale of grand pacification), triptych, 1866--Good impressions, fair condition, slightly soiled and stained, damage and minor wormholes repaired with backing
36.7x25cm. each approx. ¥40,000
- 238 YOSHIKADO: Scene of the battle of Minatogawa, triptych, c.1848--Good impressions and condition, slightly toned, a cut along right edge on left panel repaired
36x25.4cm. each approx. ¥50,000
- 239 SHUNTEI: Retainers of Uesugi Kenshin, c.1804--Good impression and condition, slightly soiled and worn, some minute wormholes repaired, fold lines
46.7x34.8cm. ¥180,000
- 240 KUNIYOSHI: Takeda Shingen, from *Meiko hyakuyu den* (One-hundred famous braveries), c.1844--Good impression and condition, very slightly soiled
37x25cm. ¥45,000
- 241 KUNITSUNA: Battle of Uesugi Kenshin and Takeda Shingen at Kawanakajima, triptych, 1864--Good impressions, fine condition except a few minute wormholes repaired
36.4x25.5cm. each approx. ¥300,000
- 242 YOSHITSURU: Battle of Kawanakajima, triptych, c.1844--Good impressions and condition, slightly soiled and worn, damage along edges repaired
37x25cm. each approx. ¥150,000
- 243 KUNITSUNA: *Gempei dai-kassen* (Battle between Minamoto Clan and Taira Clan), triptych, 1862--Good impressions and condition, faint centerfold
36x25.5cm. each approx. ¥85,000

- 244 NOBUKAZU: Fierce fight of Maeda Inuchiyo (Toshiie) in the battle of Okehazama, triptych, 1892--Good impressions and condition, slightly stained
36.6x24.5cm. each approx. ¥12,000
- 245 KUNIYOSHI: Banzui Chobei finds Hirai Gompach, triptych, c.1844--Good impressions and condition, slightly soiled and worn, center panel with ink scribble on verso
37x25.5cm. each approx. ¥98,000
- 246 YOSHITORA: Kato Kiyomasa at the battle at Kyushu, triptych, 1867--Good impressions and condition, margins very slightly soiled
37x25cm. each approx. ¥65,000
- 247 YOSHIIKU: Uncut sheet of *Taiheiki Eiyuden* (Heroes of Taiheiki), comprising Ishikawa Sadatomo (Kazumitsu) and Iki Hanshichi (Totake), 1867--Good impression and condition, very slightly soiled
24.7x36.7cm. ¥15,000
- 248 YOSHITORA: Minamoto no Yorimitsu, Yamashiro Province, from *Dai Nippon rokujuyo sho* (Sixty-odd warriors of great Japan), 1866--Good impression and condition
36.5x24.7cm. ¥20,000
- 249 YOSHITORA: Minamoto no Tametomo, Ryukyu Province, from the same series as above, 1866--Good impression and condition, some spot stains
37x25cm. ¥20,000
- 250 YOSHITORA: Kojima Takanori, Bingo Province, from the same series as above, 1866--Good impression and condition
37x24.5cm. ¥20,000
- 251 YOSHITORA: Kusunoki Masashige, Kawachi Province, from the same series as above, 1866--Good impression and condition
37x24.9cm. ¥20,000
- 252 YOSHITORA: Nitta Yoshisada, Kozuke Province, from the same series as above, 1866--Good impression and condition
37x24.08cm. ¥20,000
- 253 YOSHITORA: Scene of the night attack by loyal retainers, c.1848--Good impressions and condition, very slightly soiled, a few minor wormholes, centerfold
38x25.8cm. each approx. ¥90,000
- 254 KUNIYOSHI: Yukukawa Sampei Munenori (Yokokawa Kanbei Munetoshi), from *Seichu gishiden* (Stories of the true loyalty of the faithful samurai), c.1848--Good impression and condition, slightly soiled and stained, corners very slightly damaged
37.5x25.5cm. ¥38,000
- 255 KUNIYOSHI: Okano Gin'emon (Kin'emon) Kanehide, from the same series as above, c.1848--Good impression and condition, slightly soiled, some wormholes repaired, lightly backed
36.4x25.1cm. ¥28,000
- 256 SADAHIDE: Loyal retainers crossing Ryogoku Bridge after accomplishing the night attack, triptych, 1863--Good impressions and condition, very slightly soiled, toned, and creased, some minute damage repairs
37.2x25.2cm. each approx. ¥220,000
- 257 TOSHIKAZU: Scene of Satsuma rebellion, triptych, 1878--Good impressions and condition
37x25cm. each approx. ¥150,000
- 258 YOSHITOSHI: A scene of the battle of Odai Castle, Shinano Province, triptych, 1868--Good impressions and condition, very slightly soiled and worn
35.2x25.2cm. each approx. ¥250,000
- 259 EISAI: Battle of Honnoji Temple, triptych, 1868--Good impressions and condition
37.2x24.8cm. each approx. ¥80,000
- 260 YOSHITORA: A scene of the battle at Kan'eiji Temple, Ueno, nine sheets, complete, 1874--Good impressions and condition, slightly soiled and stained, a minor tear on third panel
37x25.2cm. each approx. ¥120,000
- 261 TOSHINOBU: Murata Shimpachi, from *Kagoshima senso kiji* (News of Satsuma Rebellion), 1877--Good impression and condition, very slightly soiled
37.1x25.2cm. ¥13,000
- 262 YOSHITOSHI: *Chirimen-e* (Creped print) of a scene of the Satsuma rebellion, triptych, 1877--Good impressions and condition, backed
29x57.6cm. overall ¥38,000
- 263 MOSAI: Scene of the Satsuma rebellion, triptych, 1877--Good impressions and condition, very slightly soiled
37x24.5cm. each approx. ¥18,000
- 264 TOSHINOBU: Scene of the Satsuma rebellion, triptych, 1877--Good impressions and condition, very slightly soiled
37x25cm. each approx. ¥18,000
- 265 YOSHITOSHI: Saigo Takamori, from *Kinsei jimbutsushi* (Stories of modern figures), 1888--Good impressions and condition, slightly soiled and worn, some wormholes, centerfold
36.3x25cm. ¥12,000
- 266 KUNITOSHI: People praying to Saigo Takamori appears in the Mars, diptych, 1877--Good impressions and condition, some minor wormholes, centerfold
37x25.5cm. each approx. ¥15,000
- 267 HANEDA TOMISABURO: Saigo Takamori's dream, four diptych, 1877--Good impressions and condition, very slightly soiled, some minute wormholes, centerfold
37x25.5cm. each approx. ¥40,000
- 268 CHIKANOBU: A scene of the riot at Korea, triptych, 1882--Good impressions and condition
37.1x25cm. each approx. ¥28,000
- 269 TOSHIHIDE: A scene of Sino-Japan war, triptych, 1894--Good impressions and condition, very slightly toned, faint centerfold
37x25.2cm. each approx. ¥28,000
- 270 TOSHIKATA: A scene of Shino-Japanese war, triptych, 1894--Good impressions and condition, very slightly stained, faint centerfold
37.7x25cm. each approx. ¥22,000
- 271 TOSHIHIDE: A scene of Sino-Japan war, triptych, 1894--Good impressions and condition, very slightly soiled, stained, and toned, centerfold slightly damaged
35.5x25.1cm. each approx. ¥18,000
- 272 TOSHIKATA: A scene of Sino-Japan war, triptych, 1894--Good impressions and condition, margins very slightly stained, faint centerfold
37x25cm. each approx. ¥28,000
- 273 TOSHIMITSU: A scene of Shino-Japanese war, triptych, 1894--Good impressions and condition, margins slightly soiled and stained, faint centerfold
37.5x24.8cm. each approx. ¥18,000
- 274 KOGYO: A scene of Sino-Japan war, triptych, 1895--Good impressions and condition, very slightly soiled, slightly creased, some minute wormholes
37x24.8cm. each approx. ¥15,000
- 275 BEISAKU: A scene of Sino-Japan war, triptych, 1894--Good impressions and condition, slightly stained, faint centerfold
37.5x25cm. each approx. ¥32,000
- 276 CHIKANOBU: A scene of Sino-Japan war, triptych, 1895--Good impressions and condition
36.4x25cm. each approx. ¥25,000
- 277 BEISAKU: A scene of Sino-Japan war, triptych, 1895--Good impressions and condition, margins very slightly stained, fold line on a corner, faint centerfold
37.4x25.4cm. each approx. ¥24,000
- 278 KOKUNIMASA: A scene of Shino-Japanese war, triptych, 1894--Good impressions and condition, slightly toned, some minor tears partly repaired
37.5x25.2cm. each approx. ¥18,000
- 279 CHIKANOBU: A scene of Sino-Japan war, triptych, 1895--Good impressions and condition
36.2x24.8cm. each approx. ¥25,000
- 280 KIYOOKI: A scene of Sino-Japan war, triptych, 1895--Good impressions and condition, fold lines
36.5x24.8cm. each approx. ¥28,000
- 281 KIYOCHIKA: A scene of Sino-Japan war, triptych, 1894--Good impressions and condition, margins very slightly stained, faint centerfold
37x25cm. each approx. ¥38,000

- 282 KIYOCHIKA: A scene of Sino-Japan war, triptych, 1894--
Good impressions and condition, margins very slightly soiled,
centerfold
37x25.8cm. each approx. ¥40,000
- 283 KIYOCHIKA: A scene of Sino-Japan war, triptych, 1894--
Good impressions and condition, backed
35x70.5cm. overall ¥23,000
- 284 KIYOCHIKA: A scene of Sino-Japan war, triptych, 1895--
Good impressions and condition, slightly stained, faint
centerfold
37x25cm. each approx. ¥36,000
- 285 KIYOCHIKA: A scene of Sino-Japan war, triptych, 1894--
Good impressions and condition, margins very slightly
stained, faint centerfold
36.7x25.3cm. each approx. ¥43,000
- 286 KIYOCHIKA: Infantry Funayama Ichinosuke, from *Rikukai
gunjin komei kagami* (Mirror of famous officers of army and
navy), 1895--Good impression and condition
35.5x25.3cm. ¥18,000
- 287 KIYOCHIKA: Lieutenant General Yamaji Motoharu, from the
same series as above, 1895--Good impression and condition
35.5x25.5cm. ¥24,000
- 288 KIYOCHIKA: Engineer Onoguchi Tokuzo, from the same
series as above, 1895--Good impression and condition
35.5x25.5cm. ¥24,000
- 289 KIYOCHIKA: Lieutenant Mitani, from the same series as
above, 1895--Good impression and condition
35.5x25.3cm. ¥25,000
- 290 KIYOCHIKA: Lieutenant Colonel Tomioka, from the same
series as above, 1895--Good impression and condition
35.5x25.3cm. ¥25,000
- 291 KIYOCHIKA: Captain Kaji Ichita, from the same series as
above, 1895--Good impression and condition
35.5x25.4cm. ¥25,000
- 292 KOTO: Lieutenant Matsuzaki, from *Nippon damashii* (Japan
spirit), 1895--Good impression and condition, margins very
slightly stained
35.5x25.3cm. ¥10,000
- 293 KOTO: Lieutenant Hayashi, from the same series as above,
1895--Good impression and condition, margins very slightly
stained
35.5x24.7cm. ¥10,000
- 294 KOTO: Ensign Ozaki, from the same series as above, 1895--
Good impression and condition, a pinhole
35.5x25.2cm. ¥8,000
- 295 KOTO: Minister Otori, from the same series as above, 1895--
Good impression and condition
35.5x24.6cm. ¥10,000
- 296 KOTO: Engineer Onoguchi Norishige, from the same series as
above, 1895--Good impression and condition
35.5x25.2cm. ¥10,000
- 297 KOTO: Standard-bearer Omori Kennosuke, from the same
series as above, 1895--Good impression and condition
35.5x24.8cm. ¥10,000
- 298-379 VARIOUS ARTISTS:
Scene of Japan-Russo War, triptych, 1904
- 298 KOTO: Good impressions and condition, slightly stained,
some minor wormholes, faint centerfold, backed
35.5x24.6cm. each approx. ¥23,000
- 299 KAKO: Good impressions and condition, slightly stained,
some minute wormholes, faint centerfold, backed
35.5x24.2cm. each approx. ¥28,000
- 300 KIYOCHIKA: Good impressions and condition, very slightly
stained near edges, some minor wormholes, centerfold,
backed
35.4x24.5cm. each approx. ¥30,000
- 301 KIYOCHIKA: Good impressions and condition, slightly stained,
centerfold, backed
35.5x24.5cm. each approx. ¥30,000
- 302 SEISAI: Good impressions and condition, very slightly stained,
a few minute wormholes, faint centerfold, backed
35.5x24.8cm. each approx. ¥25,000
- 303 CHIKANOBU: Good impressions and condition, very slightly
stained, some minor wormholes, faint centerfold, backed
35.3x24.7cm. each approx. ¥40,000
- 304 YASUDA YUKIHIKO: Good impressions and condition, a spot
stain on left panel, backed
34.6x23.8cm. each approx. ¥120,000
- 305 KAKO: Good impressions and condition, very slightly soiled
and stained, backed
37.4x25cm. each approx. ¥35,000
- 306 GAKYOJIN MATAHEI: Good impressions and condition, very
slightly stained, a few minute wormholes, faint centerfold,
backed
35.2x24.5cm. each approx. ¥28,000
- 307 RYUA: Good impressions and condition, some sheets very
slightly soiled, backed
37.5x25.2cm. each approx. ¥150,000
- 308 RYUA: Good impressions and condition, slightly trimmed,
backed
33.1x24cm. each approx. ¥30,000
- 309 RYUA: Good impressions and condition, very slightly stained,
some minor wormholes, faint centerfold, backed
35.5x24.5cm. each approx. ¥25,000
- 310 RYUA: Good impressions and condition, very slightly stained
along bottom edge, some minute wormholes, faint centerfold,
backed
35.5x24.8cm. each approx. ¥28,000
- 311 ISHO: Good impressions and condition, very slightly stained,
a few minute wormholes, backed
35.3x24.8cm. each approx. ¥30,000
- 312 GYOKUHO: Good impressions and condition, backed
35.5x24cm. each approx. ¥35,000
- 313 GAKYOJIN MATAHEI: Good impressions and condition, a few
minute wormholes, faint centerfold, backed
35.5x24.6cm. each approx. ¥30,000
- 314 GAKYOJIN MATAHEI: Good impressions and condition, a few
spot stains, very slight soiling and some minor wormholes
near bottom, faint centerfold, backed
37.8x24.5cm. each approx. ¥28,000
- 315 KOTO: Good impressions and condition, very slightly stained
near edges, a few minor wormholes, faint centerfold, backed
36.5x24.5cm. each approx. ¥30,000
- 316 TOSHIHIDE: Good impressions and condition, a few minute
wormholes, faint centerfold, backed
35.5x24.5cm. each approx. ¥25,000
- 317 KOTO: Good impressions and condition, very slightly stained
along bottom edge, some minute wormholes, faint centerfold,
backed
35.5x24.6cm. each approx. ¥30,000
- 318 BIHO: Good impressions and condition, backed
35.6x24.7cm. each approx. ¥30,000
- 319 KOTO: Good impressions and condition, some minute
wormholes, backed
35.5x24.8cm. each approx. ¥25,000
- 320 ARTIST UNKNOWN: Good impressions and condition, a
minor stain on center panel, a few pinhole worming, faint
centerfold, backed
35.4x24.7cm. each approx. ¥28,000
- 321 KIYOCHIKA: Good impressions and condition, very slightly
soiled and stained, centerfold, backed
35.5x24.6cm. each approx. ¥30,000
- 322 KYOKO: Good impressions and condition, margins slightly
soiled, a minute wormhole on left panel, backed
35.7x25.2cm. each approx. ¥30,000
- 323 HAMPO: Good impressions and condition, very slightly soiled
and stained, lightly backed
23.4x36.5cm. each approx. ¥150,000
- 324 KOHO: Good impressions and condition, very slightly stained,
title on center panel repaired, backed
37x24.8cm. each approx. ¥25,000

325	KOKYO: Good impressions and condition, right panel very slightly stained, a few pinhole worming, faint centerfold, backed 35.5x24.6cm. each approx.	¥30,000	349	GAKYOJIN: Good impression and condition 36x25cm. each approx.	¥18,000
326	BIHO: Good impressions and condition, very slightly stained, a few minute wormholes, faint centerfold, backed 35.5x24.5cm. each approx.	¥25,000	350	KIYOCHIKA: Good impressions and condition, margins very slightly stained, a few minor wormholes, faint centerfold, backed 35.7x24.5cm. each approx.	¥40,000
327	GAKYOJIN: Good impressions and condition, a few minute wormholes, faint centerfold, backed 35.2x24.5cm. each approx.	¥23,000	351	KIYOCHIKA: Good impressions and condition, faint centerfold, backed 35.5x24.6cm. each approx.	¥45,000
328	TERUKATA: Good impressions and condition, very slightly stained, a few minute wormholes, faint centerfold, backed 35.5x24.6cm. each approx.	¥30,000	352	KONEN: Good impressions and condition, backed 35.5x24.6cm. each approx.	¥28,000
329	KIYOCHIKA: Good impressions and condition, left panel very slightly soiled, very slight stain along some edges, faint centerfold, backed 35.4x24.5cm. each approx.	¥40,000	353	GESSAN: Good impressions and condition, margins very slightly soiled 38x25.4cm. . each approx.	¥30,000
330	ARTIST UNKNOWN: Good impressions and condition, slightly stained on bottom, backed 35.5x24.5cm. each approx.	¥20,000	354	GESSAN: Good impressions and condition, backed 35.5x24.5cm. each approx.	¥28,000
331	RYUA: Good impressions and condition, a small stain on right panel, faint centerfold, backed 35.5x24.5cm. each approx.	¥23,000	355	GESSAN: Good impressions and condition, lower corner of center and right panel very slightly stained, faint centerfold, backed 35.5x24.5cm. each approx.	¥28,000
332	RYUA: Good impressions and condition, slightly creased, binding holes 35.5x71.5cm. overall	¥45,000	356	GESSAN: Good impressions and condition, very slightly stained, faint centerfold, backed 35.4x24.5cm. each approx.	¥30,000
333	RYUA: Good impressions and condition, very slightly stained, a few minor wormholes, faint centerfold, backed 35.5x24.5cm. each approx.	¥60,000	357	GESSAN: Good impressions and condition, faint centerfold, backed 35.4x24.5cm. each approx.	¥28,000
334	KAKO: Good impressions and condition, faint centerfold, backed 35.3x24.5cm. each approx.	¥23,000	358	TOSHIHIDE: Good impressions and condition, faint centerfold, backed 35.5x24.6cm. each approx.	¥28,000
335	TOSHIHIDE: Good impressions and condition, backed 35.4x24.5cm. each approx.	¥23,000	359	BANRI: Good impressions and condition, center and right panel very slightly stained, faint centerfold, backed 35.5x24.5cm. each approx.	¥28,000
336	TOSHIHIDE: Good impressions and condition, very slightly stained, a few minor wormholes, backed 35.5x24.5cm. each approx.	¥20,000	360	BIHO: Good impressions and condition, center panel very slightly stained, faint centerfold, backed 35.5x24.5cm. each approx.	¥28,000
337	GESSAN: Good impressions and condition, very slightly stained, a minute wormhole on right panel, backed 35.5x24.2cm. each approx.	¥23,000	361	OHARA KOSON: Good impressions and condition, margins very slightly stained, a few minor wormholes, faint centerfold, backed 35.5x24.5cm. each approx.	¥100,000
338	GESSAN: Good impressions and condition, very slightly stained, backed 35.5x24.4cm. each approx.	¥23,000	362	BIHO: Good impressions and condition, right panel very slightly soiled, a minute stain on center panel, faint centerfold, backed 35.5x24.5cm. each approx.	¥28,000
339	KIYOCHIKA: Good impressions and condition, centerfold, backed 35.5x24.5cm. each approx.	¥35,000	363	KIYOCHIKA: Good impressions and condition, some margins very slightly stained, faint centerfold, backed 35.5x24.5cm. each approx.	¥40,000
340	RYUA: Good impressions and condition 36.1x24cm. each approx.	¥18,000	364	BIHO: Good impressions and condition, backed 35.2x24.5cm. each approx.	¥28,000
341	RYUA: Good impressions and condition, very slightly stained, a few minute wormholes, faint centerfold, backed 35.5x24.5cm. each approx.	¥50,000	365	BIHO: Good impressions and condition, a few minute wormholes, backed 35.4x24.5cm. each approx.	¥28,000
342	CHIKANOBU: Good impressions and condition, a few minor wormholes, faint centerfold, backed 36.5x24.5cm. each approx.	¥55,000	366	GESSAN: Good impressions and condition, some minute wormholes, backed 36.5x24.5cm. each approx.	¥35,000
343	TOSHIHIDE: Good impressions and condition, very slightly stained, backed 35.2x24.5cm. each approx.	¥23,000	367	GESSAN: Good impressions and condition, center panel very slightly stained, faint centerfold, backed 35.5x24.5cm. each approx.	¥28,000
344	YASUDA YUKIHIKO: Good impressions and condition, very slightly stained, a few minute wormholes, faint centerfold, backed 35.5x24.5cm. each approx.	¥45,000	368	BIHO: Good impressions and condition, slightly stained, faint centerfold, backed 36.3x24.5cm. each approx.	¥20,000
345	GESSAN: Good impressions and condition, very slightly stained, a few minute wormholes, backed 37.5x24.5cm. each approx.	¥23,000	369	SEISHU: Good impressions and condition, very slightly stained, a few minute wormholes, faint centerfold, backed 35.5x24.5cm. each approx.	¥25,000
346	GESSAN: Good impressions and condition, very slightly stained, backed 35.5x24.5cm. each approx.	¥23,000	370	BIHO: Good impressions and condition, a few minor wormholes, backed 35.4x24.5cm. each approx.	¥28,000
347	KIYOCHIKA: Good impressions and condition, very slightly stained near edges, faint centerfold, backed 35.3x24.5cm. each approx.	¥40,000	371	GESSAN: Good impressions and condition, a few minor wormholes, backed 36.5x24.5cm. each approx.	¥30,000
348	TERUKATA: Good impressions and condition, faint centerfold, backed 35.5x24.8cm. each approx.	¥28,000	372	KUNIKATSU: Good impressions and condition, a few minute wormholes, backed 36.6x24.5cm. each approx.	¥28,000

- 373 BIHO: Good impressions and condition, very slightly stained near edges, a few minute wormholes, backed 35.5x24.7cm. each approx. ¥23,000
- 374 SHIKO: Good impressions and condition, a few minute wormholes, backed 36.5x24.5cm. each approx. ¥28,000
- 375 KIYOCHIKA: Good impressions and condition, margins very slightly stained, a few minute wormholes, backed 36.5x24.5cm. each approx. ¥45,000
- 376 HANPO: Good impressions and condition, a spot stain on right panel, a few minor wormholes, backed 36.5x24.5cm. each approx. ¥28,000
- 377 OHARA KOSON: Good impressions and condition, a few minute wormholes, title on center panel repaired, faint centerfold, backed 37x24.6cm. each approx. ¥120,000
- 378 KIYOCHIKA: Good impressions and condition, backed 35.5x23.6cm. each approx. ¥70,000
- 379 KIYOCHIKA: Good impressions and condition, margins very slightly stained, a few minor wormholes, faint centerfold, backed 35.5x24.5cm. each approx. ¥70,000
- 380 KOTO: Scenes of Japan-Russo War, eight sheets--Good impressions and condition, very slightly stained, some minor wormholes, backed 25.2x36.5cm. each approx. ¥40,000
- 381 KOTO: A scene of Japan-Russo war, titled *Haimen kogeki* (Attach from back), 1994--Good impression and condition 25.3x36.6cm. ¥16,000
- 382 TAKAHASHI SHOTEL: Kamata, from *Tonan hakkei* (Eight views of south Tokyo), 1922--Fine impression and condition 26.5x39cm. ¥1,000,000
- 383 TAKAHASHI SHOTEL: Tokumochi Sirine, from *Setsugelkka* (Snow, moon, and flower), 1922--Fine impression and condition 38.8x26.5cm. ¥800,000
- 384 KAWASE HASUI: *Tsuchiura no asa* (Morning in Tsuchiura), 1931--Fine impression and condition except very slight toning on edge 38.8x26.2cm. ¥800,000
- 385 KAWASE HASUI: *Fuji no yukibare, Tagonoura* (Clear sky after snow at Mount Fuji seen from Tagonoura), 1932--Fine impression and condition 39.1x26cm. ¥1,000,000
- 386 KAWASE HASUI: *Shiribeshi Bikuni, Asa-umi* (Morning sea at Bikuni Shiribeshi), 1932--Fine impression and condition except very slight toning on edge 38.6x26.5cm. ¥700,000
- 387 KAWASE HASUI: *Osaka Dotonbori no asa* (Morning at Dotonbori, Osaka), 1933--Fine impression and condition except very slight toning on edge 39.5x26.5cm. ¥900,000
- 388 KAWASE HASUI: Ho-o Hall at Byodoin Temple, Uji (Kyoto), 1933--Fine impression and condition 38.5x26.4cm. ¥800,000
- 389 KAWASE HASUI: Nigatsudo Hall, Nara, 1934--Fine impression and condition 26x38.8cm. ¥800,000
- 390 KAWASE HASUI: Senkyoji Temple, Mount Chii, Korea, 1940--Fine impression and condition 39.3x26.6cm. ¥200,000
- 391 KAWASE HASUI: Moon over Izura, posthumous edition, 1952--Fine impression and condition 26.5x39cm. ¥100,000
- 392 KAWASE HASUI: Morning at Mito Beach, posthumous edition, 1953--Fine impression and condition 39.5x26.3cm. ¥100,000
- 393 KAWASE HASUI: Shinkyo Bridge, Nikko, posthumous edition, 1953--Fine impression and condition 26.3x39cm. ¥90,000
- 394 KAWASE HASUI: Autumn at Funatsu, posthumous edition, 1953--Fine impression and condition 26.2x39.5cm. ¥100,000
- 395 KAWASE HASUI: Pagoda at Honmonji Temple, Ikegami, posthumous edition, 1953--Fine impression and condition 26.5x39.8cm. ¥110,000
- 396 KAWASE HASUI: Dusk at Nakoso, posthumous edition, 1954--Fine impression and condition 39.2x26.2cm. ¥80,000
- 397 KAWASE HASUI: Morning at Okayama Castle, posthumous edition, 1955--Fine impression and condition 39.3x26.6cm. ¥100,000
- 398 KAWASE HASUI: Western Hamlet of Horyuji Temple, posthumous edition, 1955--Fine impression and condition 39.6x26.7cm. ¥90,000
- 399 KAWASE HASUI: Kansanomiya Shrine, Lake Tazawa, posthumous edition, 1927--Fine impression and condition 26.5x39cm. ¥180,000
- 400 after KYOSAI: Heron in rain, posthumous publication--Good impression and condition 38.5x26cm. ¥50,000
- 401 OHARA KOSON: Eagle, c.1926--Fine impression, good condition 35x19cm. ¥140,000
- 402 KASAMATSU SHIRO: *Tasogare, Shinshu Honami onsen* (Twilight at Honami hot spring, Shinano Province), 1948--Good impression and condition 39.2x26cm. ¥160,000
- 403 KEIBUN: Ducks, Showa Period--Fine impression and condition 26.5x39.5cm. ¥10,000
- 404 ONO BAKUFU: *Ishidai* (Striped beakfish), c.1935--Good impression and condition, slightly toned, very slightly stained 28.2x40cm. ¥50,000
- 405 ONO BAKUFU: *Sawara* (Spanish mackerel), c.1935--Good impression and condition, very slightly stained and toned 28.6x40.5cm. ¥50,000
- 406 YAMANAKA KODO: *Jingu no shin'en* (Jingu Shrine), 1937--Good impression and condition 26.5x38.8cm. ¥5,000
- 407 SEIKO: Temple ground, c.1945--Fine impression and condition 27x39.5cm. ¥28,000
- 408 SEIKO: *Tsuki akari* (Moonlight), 1948--Fine impression and condition 26.9x39.7cm. ¥28,000
- 409 TSUKIOKA KOGYO: *Nogaku hyakuban* (One hundred noh performances), complete set of 120 sheets, comprising seventy-four single sheets, thirteen diptychs, and three triptychs, 1922-26--Fine impressions and condition, some very slightly soiled, stained and/or discoloration near edges 37.4x25.3cm. each approx. ¥1,200,000
- 410 ITO SHINSUI: *Kotatsu* (Charcoal footwarmer), from *Shin bijin juni sugata* (Twelve figures of modern beauties), limited edition of 200, 1923--Fine impression, good condition, very slightly toned 42.8x26cm. ¥800,000
- 411 YOSHIDA HIROSHI: *Ochiak Tokugawa botan-en / Tokugawa peony garden*, from *Tokyo junidai* (Twelve subjects of Tokyo), signed in pencil and in brush, with *jizuri* seal, 1928--Fine impression and condition 27.5x41.3cm. ¥450,000
- 412 YOSHIDA HIROSHI: *Kyu hommaru / Edo Canstle*, from *Tokyo junidai* (Twelve subjects of Tokyo), signed in pencil and in brush, with *jizuri* seal, 1929--Fine impression and condition 27.2x41.2cm. ¥300,000
- 413 YOSHIDA HIROSHI: *Ume no ie / Plum gateway*, signed in pencil and in brush, with *jizuri* seal, 1935--Good impression and condition, margins very slightly soiled 40.7x27cm. ¥240,000
- 414 YOSHIDA HIROSHI: Print process, titled *A junk*, five sheets and description, 1939--Good impressions and condition, some sheets very slightly stained 31x24cm. each approx. ¥70,000

- 415 TORI KIYOTADA: No performance *Shakkyo*, the spirit of White head lion, c.1937--Fine impression, good condition, very slightly toned
44.5x28.6cm. ¥18,000
- 416 TAKEUCHI SEIHO: *Seiho junishi jo* (Album of twelve zodiacs by Takeuchi Seiho), twelve sheets, complete, bound as an accordion-type album, with green covers, Meiji Period--Good impression and condition, some sheets very slightly soiled, front cover with a numbered sticker
49.5x37.2cm. ¥280,000
- 417 VARIOUS ARTISTS: *Tokyo kaiko zue / Scenes of last Tokyo*, fifteen sheets, complete, with table of content, each with original mat, with paper folder, 1845--Good impressions and condition, some very slightly stained and/or toned, paper folder damaged and restored
20x26.3cm. ¥260,000
- 418 UNSIGNED: Map of Edo, original covers and title slip, with original wrapper, 1846--Good impression and condition, a few minute wormholes, wrapper soiled and worn
121x133cm. overall ¥130,000
- 419 UNSIGNED: Map of Edo, original covers and title slip, 1724--Good impression and condition, wormholes repaired
133x175cm. overall ¥250,000
- 420 UNSIGNED: Map of Edo, with fold-out, original covers, c.1844--Good impression and condition, a tear along fold line
69x93cm. overall ¥40,000
- 421 UNSIGNED: Map of Edo, original covers and title slip, 1854--Good impression and condition, slightly stained, some wormholes
166x197cm. overall ¥120,000
- 422 *Toto saijiki* (Almanac of seasonal events of the eastern capital): Hasegawa Gettan, *illustrator*, Saito Gesshin, *author*, five vols., complete, 1839, original covers and title slips, good condition, ownership seal
23x15.5cm. each ¥120,000
- 423 *Hokusai manga* (Hokusai sketchbook), Vol. 1: Katsushika Hokusai, *illustrator*, Edo Period edition, covers slightly worn and with ink inscription, title slip damaged, slight finger soiling and damage on corners, some pages with very slight stain and/or ink inscription, ownership seal
22.6x15.5cm. ¥100,000
- 424 *Hokusai manga* (Hokusai sketchbook), Vol. 9: Katsushika Hokusai, *illustrator*, Edo Period, title slip missing, inside front cover and colophon missing, slight finger soiling some colors painted
22.6x15.5cm. ¥85,000
- 425 *Bumpo sansui gafu* (Album of landscape pictures by Bumpo): Kawamura Bumpo, *illustrator*, one volume, complete, original covers and title slip, slight finger soiling, covers slightly ink soiled and worn, ownership seal and signature
25.5x17.4cm. ¥45,000
- 426 *Bumpo gafu* (Picture album by Bumpo): Kawamura Bumpo, *illustrator*, three vols., complete, 1807-13, original covers and title slips
25.6x18cm. each approx. ¥300,000
- 427 *Ryusai sohitsu gafu*, Vol. 1: Utagawa Hiroshige, *illustrator*, original covers and title slip, slight finger soiling and scribble, title slip slightly worn
17.9x12cm. ¥30,000
- 428 *Ryusai sohitsu gafu*, Vol. 2: Utagawa Hiroshige, *illustrator*, original covers and title slip, very slight finger soiling, inside backcover slightly stained
18.3x12cm. ¥35,000
- 429 *Genkon eimei kyakushu* (One hundred poems by modern heroes): Seisai Eitaku, *illustrator*, 1 vol. complete, 1881, original covers and title slip, minor tear on introduction
18x12.5cm. ¥15,000
- 430 *Kacho sansui saiga zushiki* (Illustration samples of Flower, birds, and landscapes), Vol. 4: Katsushika Isai, *illustrator*, 1866, title slip missing, very slightly soiled, some pages slightly stained and/or with minor wormholes, ownership seal
12x17.8cm. ¥13,000
- 431 *Suikoden gafu* (Album of Suikoden), Vol. 1: Yanagawa Shigenobu, *illustrator*, Meiji Period, tear on inside front cover, some pages slightly stained, ownership seal
22.4x15cm. ¥35,000
- 432 *Ikkai manga* (Sketchbook by Ikkai [Yoshitoshi]): Tsukioka Yoshitoshi, *illustrator*, one volume, 1866, original covers and title slip, preface slightly stained
17.5x11.5cm. ¥170,000
- 433 *Bijutsu sekai* (Art world), Vol. 2: Watanabe Seitei, *ed.*, with woodblock illustration by Yoshitoshi, Seitei, Korin and others, 1891, slightly soiled
25x16cm. ¥20,000
- 434 *Bijutsu sekai* (Art world), Vol. 5: Watanabe Seitei, *ed.*, with woodblock illustration by contemporary artists and after Hokusai, Jakuchu, and others, 1891, very slightly soiled
25x16cm. ¥20,000
- 435 *Bijutsu sekai* (Art world), Vol. 6: Watanabe Seitei, *ed.*, with woodblock illustration by contemporary artists and after Sesshu and others, 1891, very slightly soiled
25x16cm. ¥20,000
- 436 *Bijutsu sekai* (Art world), Vol. 7: Watanabe Seitei, *ed.*, with woodblock illustration by contemporary artists and after Kano Eitoku, Hokusai, Zeshin and others, 1891, very slightly soiled and toned, binding repair
¥18,000
- 437 *Bijutsu sekai* (Art world), Vol. 9: Watanabe Seitei, *ed.*, with woodblock illustration by contemporary artists and after Hokusai, Sesshu, Okumura Masanobu, and others, 1891, very slightly soiled, some pages very slightly stained, number inscription in ink on back cover
¥18,000
- 438 *Bijutsu sekai* (Art world), Vol. 10: Watanabe Seitei, *ed.*, with woodblock illustration by contemporary artists and after Eizan, Hokusai, Sesshu and others, 1891, very slightly soiled
25x16cm. ¥20,000
- 439 *Bijutsu sekai* (Art world), Vol. 14: Watanabe Seitei, *ed.*, with woodblock illustration by contemporary artists and after Moronobu, Korin, Utamaro and others, 1891
¥20,000
- 440 *Bijutsu sekai* (Art world), vol. 16: Watanabe Seitei, *ed.*, with woodblock illustration after Yosai, Gyosai Zeshin, 1892, very slightly soiled, a minor stain on one page
25x16cm. ¥20,000
- 441 *Bijutsu sekai* (Art world), Vol. 19: Watanabe Seitei, *ed.*, with woodblock illustration by contemporary artists and after Kuniyoshi, Oyko, Masanobu and others, 1892, very slightly soiled and stained, a minor tear on back cover
25x16cm. ¥20,000
- 442 *Bijutsu sekai* (Art world), Vol. 21: Watanabe Seitei, *ed.*, with woodblock illustration by contemporary artists and after Sukenobu, Itcho, Matabei and others, 1892, very slightly soiled, slightly stained, some minor worming
¥20,000
- 443 *Bijutsu sekai* (Art world), Vol. 22: Watanabe Seitei, *ed.*, with woodblock illustration by contemporary artists and after Choshun, Hokusai and others, 1892, very slightly soiled and stained
¥20,000

通信販売のご案内

掲載品は特記なき限り真作であることを保障いたします。ご希望により詳細な状態をお知らせいたします。

日本国内への発送費用は書籍、複製版画類を除き無料です。海外への発送は実費を頂戴いたします。

品物のお引渡しは原則として全額支払後となります。

万一、購入された作品がお気に召さなかった場合の返品はご自由です。作品が原状にて7日以内に返送されることを原則といたします。

国内からのご送金は郵便振替、銀行振込、現金書留のいずれでも結構です。海外からの場合は国際郵便為替、または日本円での銀行送金でお願いいたします。送金手数料はお客様負担となります。又、主要クレジットカードでのお支払もお受けしております。その他のお支払方法につきましてはお問い合わせください。

商品の表示価格は消費税を含みます。

CONDITIONS OF SALE

All lots, unless noted, are guaranteed genuine. Condition reports are available upon request.

Shipping can be arranged within Japan without charge (except books and reproductions). Shipping to overseas is extra.

Purchase will not be transferred until payment in full has been received.

Purchase can be returned in case of dissatisfaction. Refund to be made provide that the purchase is returned within 7 days in its original condition at purchaser's cost.

For orders within Japan, payments can be made by postal transfer, bank transfer, or registered mail. For those from overseas, payments to be made by international postal money order or bank transfer in Japanese Yen. Bank charges are at purchaser's cost. Payment by major credit cards is also accepted. Other payment methods can be consulted.

原書房

101-0051

東京都千代田区神田神保町2-3

Tel 03 5212 7801

Fax 03 3230 1158

ホームページ <http://www.harashobo.com>

eメール ukiyoe@harashobo.com

HARA SHOBO

2-3 Kanda Jimbocho, Chiyoda-ku

Tokyo 101-0051 Japan

Tel +81 (0)3 5212 7801

Fax +81 (0)3 3230 1158

Website <http://www.harashobo.com>

e-mail ukiyoe@harashobo.com

原書房

101-0051

東京都千代田区神田神保町2-3

Tel 03 5212 7801

Fax 03 3230 1158

ホームページ <http://www.harashobo.com>

eメール ukiyoe@harashobo.com

HARA SHOBO

2-3 Kanda Jimbocho, Chiyoda-ku

Tokyo 101-0051 Japan

Tel +81 (0)3 5212 7801

Fax +81 (0)3 3230 1158

Website <http://www.harashobo.com>

e-mail ukiyoe@harashobo.com