

新収浮世絵版画目録 えどげいじゅつ
EDO GEIJUTSU -Catalogue of New Acquisitions



No. 97
2022.11

原書房
HARA SHOBO
Tokyo

原 書 房

<http://www.harashobo.com>

101-0051

東京都千代田区神田神保町2-3

Tel. 03 5212 7801

Fax. 03 3230 1158

eメール ukiyoe@harashobo.com

営業時間:

午前10時 - 午後6時

日・月・祭日 休業

郵便振替 00130-2-37578

みずほ銀行 九段支店

当座 0142732

三菱UFJ銀行 神保町支店

普通 0748571

三井住友銀行 神保町支店

普通 2003925

ゆうちょ銀行 ○一八支店

普通 9221851

当面の間、営業時間は以下の通りとなっております。

火～土曜 午前11時 - 午後6時

上記以外でご来店ご希望の場合はお問い合わせください。

Please note temporary gallery hours as below.

Tue - Sat 11am - 6pm

Otherwise by appointment

HARA SHOBO

<http://www.harashobo.com>

2-3 Kanda Jimbocho, Chiyoda-ku,

Tokyo 101-0051 Japan

Tel. +81 (0)3 5212 7801

Fax. +81 (0)3 3230 1158

e-mail ukiyoe@harashobo.com

Gallery Hours:

Tuesday - Saturday, 10am - 6pm

Closed on Sundays, Mondays and Public Holidays



地下鉄神保町 (三田線・新宿線・半蔵門線): A6出口 徒歩1分


JR水道橋駅 (総武線): 東口 徒歩10分

JR御茶ノ水駅 (中央線・総武線): 西口 徒歩15分

Jimbocho Subway Station (Mita Line, Shinjuku Line, Hanzomon Line) Exit A6: 1min.

JR Suidobashi Station (JR Sobu Line) East Exit: 10mins.

JR Ochanomizu Station (JR Chuo Line, Sobu Line) West Exit: 15mins.



お客様各位

平素は格別のご愛顧を賜り、厚く御礼申し上げます。新収浮世絵版画目録「えどげいじゅつ」97号をお送りいたします。

円安や運賃の高騰で、海外の買い付けもままなりません。海外での浮世絵の人気日本でも浮世絵の価格は上がってきています。幸い良い仕入れにも恵まれ、目録をお届けすることができました。

神保町にも活気が戻ってまいりました。先日開催された「神田古本まつり」も大変な人出で大盛況でした。来店される外国からのお客様も増え、「お店に来るのを楽しみにしていたよ」と仰る方もいて、対面での商売を続けられる喜びを感じております。

お客様の増加に伴い、午後5時までだった営業時間を以前の午後6時までに戻しました。開店時間は当面の間、11時とさせていただきます。

皆様からのご注文、ご来店を心よりお待ちしております。

原書房 原敏之

Dear Customers

I am pleased to present our new catalogue, *Edo Geijutsu*, No. 97.

After three years of isolation, Japan has finally opened the gate to the world and our streets became as lively as it used to be.

Despite, it seems still not easy for us to go abroad because of imbalanced exchange rate. Meanwhile, we stay with patience and look forward to welcoming you to our gallery here in Tokyo.

Toshiyuki Hara
HARA SHOBO



1 龍子 (RYUSHI)
青樓美人合 加賀屋内月岡 文化5年頃 (c.1808)
刷良 保存良 周囲極少汚及極少シワ
39x26.4cm. ¥280,000
歌川龍子(竹斎 歌川国直門人)



2 春扇 (SHUNSEN) 見立東下り 文化頃 (c.1804)
刷良 保存並 少シミ 極少虫穴 中折 裏打残
25.5x38.4cm. ¥25,000



3 春扇 (SHUNSEN) 吊籠 文化頃 (c.1804)
刷良 保存良 中折
25.5x38.6cm. ¥40,000



6 英山 (EIZAN)
東都名所八景 浅草寺暮ノ市
文化9年 (1812)
刷良 保存良 極少汚
極少シワ 極少虫穴
39x25.8cm. ¥680,000



4 春扇 (SHUNSEN) 海女 文化頃 (c.1804)
刷良 保存良 中折
24.5x38.5cm. ¥55,000



5 春扇 (SHUNSEN) 汐くみ 文化頃 (c.1804)
刷良 保存良 極少汚 中折部極少補修
25.5x38.5cm. ¥30,000



7 英山 (EIZAN)
風流五節句 端午の杜若
天保頃 (c.1830)
刷良 保存並 少汚
少シミ 極少傷補修
34x22.8cm. ¥45,000



8 英山 (EIZAN)
春画 文化頃 (c.1814)
刷良 保存良 極少汚 中折
25.5x38.6cm. ¥150,000



9 国芳 (KUNIYOSHI)
春画 天保頃 (c.1830) 刷良 保存並 少汚 傷
極少虫穴 中折 トリム
21.1x35cm. ¥50,000



10 英泉 (EISEN)
浮世二十四孝 郭巨
文政頃 (c.1818)
刷良 保存良 極少シワ
38x26cm. ¥180,000



12 泉晁 (SENCHO)
北澤の牡丹 天保頃 (c.1830)
刷良 保存良 極少汚 極少シミ
37.5x25.8cm. ¥80,000
貞齋泉晁 (蝶)



11 英泉 (EISEN)
傾城江戸角 れ 平川天神
海老屋内 鴨緑 天保頃 (c.1830)
刷良 保存良 極少汚 上角破補修
38.6x26.1cm. ¥50,000



15 北斎 (HOKUSAI)
喜撰法師 天保頃 (c.1830)
刷良 保存良 少汚 少しシミ
少傷 少虫穴補修
36.4x25.8cm. ¥180,000



13 国安 (KUNIYASU)
美人花合 文政頃 (c.1818)
刷良 保存並 退色 ヤケ 傷 少汚
34.5x22.7cm. ¥30,000



14 国安 (KUNIYASU)
東都名所 柳島の妙見
天保頃 (c.1830) 刷良 保存良
少汚 極少シミ 綴穴補修
35x25cm. ¥70,000



16 北斎 (HOKUSAI)
摺物 馬盡 綿線馬
文政5年 (1822) 刷良 保存良 少しシミ
21.1x18.6cm. ¥380,000



17 国貞 (KUNISADA)
化粧三美人 (お齒黒)
文政頃 (c.1818)
刷良 保存良 少汚
39.5x26.9cm.
¥350,000



18 国貞 (KUNISADA)
星の霜当世風俗 待合 文政2年頃 (c.1819)
刷良 保存良 少汚 上部少シワ
38.3x25.9cm. ¥220,000



19 国貞 (KUNISADA)
俳仙十哲ノ内 支考
弘化頃 (c.1844)
刷良 保存良 極少シミ
縁極少破 上角破補修
38x25.8cm.
¥30,000



20 国芳 (KUNIYOSHI)
四季之内 御下やしきの春あそび 3枚続 嘉永頃 (c.1848)
刷並 保存良 極少汚 縁少破補修
各約36.5x24.8cm. ¥75,000



21 豊国三代 (TOYOKUNI III)
兒桜園愛樹 3枚続 嘉永頃 (c.1848)
刷良 保存良
各約35.5x24.5cm. ¥70,000



22 豊国三代 (TOYOKUNI III)
牡丹花と美人 3枚続 嘉永頃 (c.1848)
刷良 保存良 右図右縁トリム
各約36x25cm. ¥55,000



23 豊国三代 (TOYOKUNI III)
雪月花之内 はな 3枚続 嘉永頃 (c.1848)
刷良 保存良 右縁極少虫穴
各約35.5x24.4cm. ¥80,000



24 豊国三代 (TOYOKUNI III)
曲水遊覧之図 3枚続 嘉永5年 (1852)
刷良 保存良 極少ヤケ 左図シミ
各約36.2x25cm. ¥40,000



25 豊国三代 (TOYOKUNI III)
喜怒愛楽之内 楽 3枚続 安政元年 (1854)
 刷良 保存良
 各約35.5x24.5cm. ¥80,000



26 豊国三代 (TOYOKUNI III)
吾妻源氏雪月花之内 花 3枚続 安政元年 (1854)
 刷極良 保存極良 但極少虫穴
 各約37.2x25.8cm. ¥200,000



27 豊国三代 (TOYOKUNI III)
源氏十二月之内 弥生 3枚続 安政2年 (1855)
 刷並 保存良 少退色 少ヤケ 弱中折
 各約37x25.5cm. ¥45,000



28 豊国三代 (TOYOKUNI III)
十二月月ノ内 弥生 雛祭 3枚続 安政元年 (1854)
 刷良 保存良 極少虫穴
 各約38x25.5cm. ¥180,000



29 豊国三代 (TOYOKUNI III)
秋の夜虫の音聞図 3枚続 元治元年 (1864)
 刷良 保存良
 各約35.8x24.7cm. ¥70,000
 背景は国久画



30 豊国三代 (TOYOKUNI III)
再板 伽羅先代萩御殿之図 3枚続 安政5年 (1858)
 刷良 保存極良
 各約37.5x25.7cm. ¥120,000



31 貞秀 (SADAHIDE)
東錦さくらかり 3枚続 嘉永頃 (c.1848)
 刷良 保存良 右図極少シミ
 各約37.5x25.5cm. ¥100,000



32 国輝 (KUNITERU)
四季詠 穠の楽 3枚続 嘉永6年 (1853)
 刷良 保存良 極少虫穴及虫穴補修 弱中折
 各約38.5x27.6cm. ¥160,000



33 国周 (KUNICHIKA)
春の景花遊図 3枚続 安政元年 (1854)
刷良 保存良 中図極少シミ 極少傷補修
各約36.5x25.5cm. ¥80,000



34 豊国四代 (TOYOKUNI IV)
東京新吉原江戸町壱丁目 松本樓金瓶大黒於大広間娯遊之図
明治4年 (1871) 刷良 保存良 中図極少シミ
各約37x25cm. ¥18,000



39 年方 (TOSHIKATA)
雪月花之内 石山寺秋之月 3枚続 明治17年 (1884)
刷良 保存良 極少汚 極少シミ 少ヤケ 縁極少傷 少トリム
各約34.4x23.8cm. ¥20,000



35 深川 松本
¥10,000



36 今戸 大七
¥12,000



40 延一 (NOBUKAZU)
佳人雪見之清楽 3枚続 明治23年 (1890)
刷良 保存良 極少ヤケ 極少シミ
各約36.8x25cm. ¥25,000



37 柳橋 柳光亭
¥12,000



38 両国 中村屋
下縁極少虫穴 ¥10,000



41 周延 (CHIKANOBU)
世上各国写画帝王鏡 3枚続 明治12年 (1879)
刷良 保存良 少トリム 裏打
各約35x23.5cm. ¥18,000



42 周延 (CHIKANOBU) 頂貴弥生花戦の戯れ 3枚続
明治13年 (1880) 刷良 保存良 少虫穴
各約36.8x25cm. ¥15,000



43 周延 (CHIKANOBU) 里の花廓の賑 3枚続
明治20年頃 (c.1887) 刷良 保存良 少汚
少傷 左図角シミ 各約36.8x25.4cm. ¥18,000

44 周延 (CHIKANOBU)
上野公園開花図 3枚続
明治21年 (1888)
刷極良 保存良 中図極少シミ
各約37.5x25cm. ¥300,000



45 周延 (CHIKANOBU)
婦人諸礼式之図 盆栽 3枚続
明治38年 (1905)
刷極良 保存極良
各約37x25cm. ¥200,000



46 周延 (CHIKANOBU)
幼女礼式教育之図 3枚続 明治24年 (1891)
刷良 保存良 中図少シミ 右図極少シミ
各約37x25cm. ¥25,000



47 周延 (CHIKANOBU)
小金井桜御遊覧図 3枚続 明治19年 (1886)
刷良 保存良 薄裏打
各約36x23.5cm. ¥28,000



48 周延 (CHIKANOBU)
見立十二支 西 浅草田園
西の市 明治20年 (1887)
刷良 保存良 極少汚
少トリム 薄裏打
36x24.3cm. ¥15,000



49 周延 (CHIKANOBU)
雪月花 花 扇折
明治32年 (1899)
刷良 保存良
37.7x25cm. ¥30,000



50 周延 (CHIKANOBU)
婦人諸礼式之図 (お茶) 3枚続 明治28年 (1895)
刷良 保存良 裏打
各約35.8x23.8cm. ¥40,000

50～54 月耕 (GEKKO) 婦人風俗 明治24年 (1891) 特記なき限り刷良 保存良 各約35x24.5cm.



51 花嫁
極少汚 ¥15,000



52 三曲
¥15,000



53 御祭礼
極少汚 ¥15,000



54 七草の里
極少汚 少ヤケ ¥10,000

57 清親 (KIYOCHIKA)
花模様 もくろく 明治29年 (1896)
刷良 保存良 裏打
35.9x23.8cm. ¥10,000



56 清親 (KIYOCHIKA)
川俣絹布整錬株式会社カレンダー
明治10年頃 (c.1877)
刷極良 保存極良
36.5x25cm. ¥18,000



55 挿花
極少汚 ¥15,000

58～61 清親 (KIYOCHIKA) 花模様 3枚続 明治29年 (1896) 特記なき限り刷良 保存良 裏打 各約36x24cm.



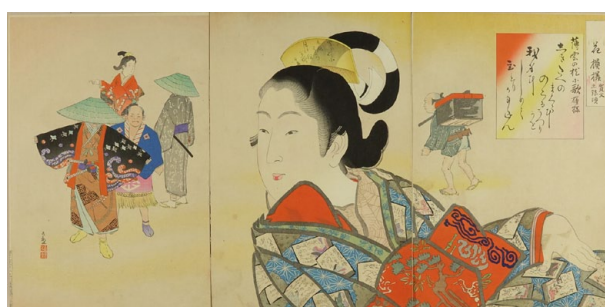
58 慶長頃
極少汚 ¥60,000



59 寛永正保頃
極少汚 裏打 ¥60,000



60 承応万治頃
¥60,000



61 寛文元禄頃
極少汚 極少シミ ¥60,000

62～67 清親 (KIYOCHIKA) 花模様 3枚続 明治29年 (1896) 特記なき限り刷良 保存良 裏打 各約36x24cm.



62 延宝頃
¥60,000



63 享保
極少汚 ¥60,000



64 安永頃
¥60,000



65 天明ノ頃
極少汚 極少シミ ¥55,000



66 文化ノ頃
極少汚 極少シミ ¥60,000



67 天保ノ頃
極少汚 極少シミ ¥70,000



68 清親 (KIYOCHIKA)
古代模様 清少納言 3枚続 明治29年 (1896)
刷良 保存良 極少汚 極少シミ 裏打
各約35.7x23.7cm. ¥60,000



69 清親 (KIYOCHIKA)
古代模様 紫式部 3枚続 明治29年 (1896)
刷良 保存良 極少汚 極少シミ 裏打
各約35.7x23.7cm. ¥60,000



70 春汀 (SHUNTEI)
 美人十二ヶ月 12組揃 目次共 明治31年 (1898)
 刷極良 保存良 其6極少シミ 其1、其2、其11少シミ
 其4左図少トリム 其12左図極少シミ
 各約35.5x25.2cm. ¥1,200,000



71 月耕 (GEKKO)
 日本花図会 36枚揃+目次
 明治30年 (1897)
 刷良 保存良 一部下部少シミ
 各約35.5x24cm.
 ¥380,000



72 昇雲 (SHOUN)
 今すがた 蚊屋の月
 明治39年 (1906)
 刷極良 保存極良
 36.5x24.5cm. ¥140,000



73 昇雲 (SHOUN)
 いすがた はなれざしき
 明治40年 (1907)
 刷極良 保存極良
 但下部極少インク汚
 37x25.4cm. ¥140,000





74 鏑木清方 (KABURAGI KIYOKATA)
「小春」文芸倶楽部17巻13号 口絵
明治44年10月 (1911)/10
刷良 保存良
31.2x21.9cm. ¥28,000



75 武内桂舟 (TAKEUCHI KEISHU)
「初松魚」文芸倶楽部20巻5号 口絵
大正3年4月 (1914/4)
刷良 保存良
29.4x22cm. ¥10,000



76 水野年方 (MIZUNO TOSHIKATA)
「愛の花束」文芸倶楽部6巻12号 口絵
明治33年9月 (1900/9)
刷良 保存良
22x29.5cm. ¥6,000



77 梶田半古 (KAJITA HANKO)
「うたたね」文芸倶楽部12巻9号 口絵
明治39年7月 (1906/7)
刷良 保存良
21.7x30.3cm. ¥7,000



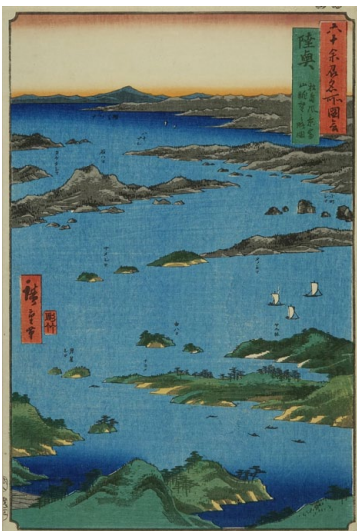
78 武内桂舟 (TAKEUCHI KEISHU)
「ひな」文芸倶楽部18巻4号 口絵
明治45年3月 (1912/3) 刷良 保存良
30.7x22.2cm. ¥6,000



79 広重 (HIROSHIGE)
東都名所 永田馬場山王宮 喜鶴堂版 天保3年頃 (c.1832)
刷良 保存良 極少汚 極少シミ 極少ヤケ 極少虫穴補修
25.3x35.6cm. ¥80,000



80 広重 (HIROSHIGE)
江戸名所 浅草東本願寺の図
藤慶版 嘉永頃 (c.1848)
刷並 保存良 極少汚 弱中折
24.8x37cm. ¥60,000



82 広重 (HIROSHIGE)
六十余州名所図会 陸奥
松島風景 富山眺望之略図
嘉永6年 (1853)
刷良 保存良
上部極少虫穴補修 少トリム
35.2x23.9cm. ¥120,000



81 広重 (HIROSHIGE)
東海道張交図会 十三
坂の下 土山 水口 石部
泉市版 嘉永5年 (1852)
刷良 保存良 上縁極少シミ
37.6x24.8cm. ¥30,000



83 広重 (HIROSHIGE)
六十余州名所図会
佐渡 金やま 嘉永6年 (1853)
刷極良 保存良
綴穴補修 下縁少トリム
36.2x25.6cm. ¥400,000



84 広重 (HIROSHIGE)
六十余州名所図会
下総 銚子の浜 外浦
嘉永6年 (1853)
刷良 保存良 極少汚
極少虫穴補修
36.4x24.5cm. ¥360,000



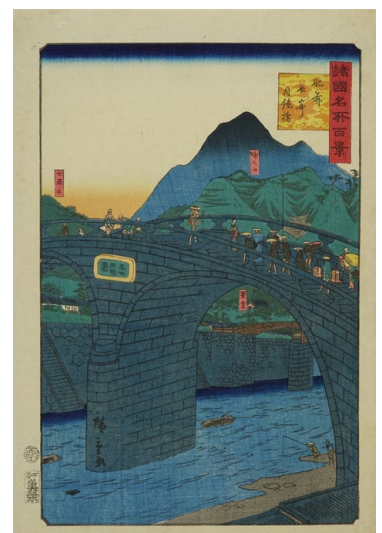
85 広重 (HIROSHIGE)
五十三次名所図会 十四
原 あし鷹山不二眺望 安政2年 (1855)
刷良 保存良 極少シミ 綴穴 少トリム
35.2x24.1cm. ¥220,000



86 広重 (HIROSHIGE)
名所江戸百景 小梅堤
安政3年 (1856)
刷良 保存極良
36.5x24.8cm.
¥400,000



87 広重二代 (HIROSHIGE II)
江戸名勝図会 真乳山
文久2年 (1862)
刷良 保存良
極少虫穴補修
36x25.2cm. ¥45,000



88 広重二代 (HIROSHIGE II)
諸国名所百景 肥前 長崎目鏡橋
安政6年 (1859)
刷良 保存極良 但縁少虫穴補修
36.7x25cm. ¥200,000

89～92 御上洛東海道 文久3年(1863) 特記なき限り刷良 保存良 各約 35x25cm.



89 豊国三代 (TOYOKUNI III)
原 番号墨書 裏に糊跡
¥60,000



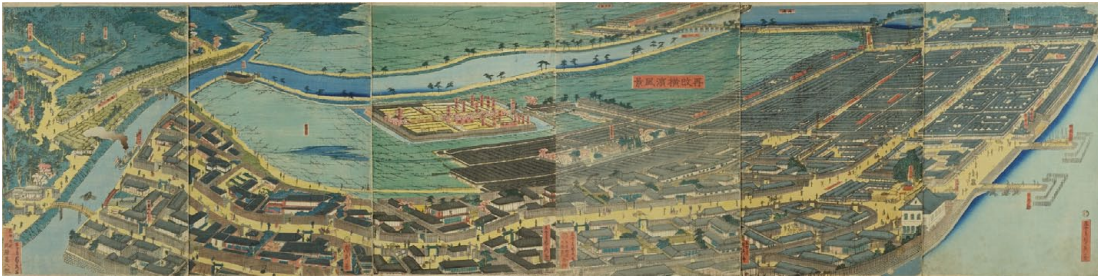
90 広重二代 (HIROSHIGE II)
由井 少汚 左縁極少虫穴補修
¥35,000



91 艶長 (TSUYANAGA)
桶狭間 上縁少トリム
¥23,000



92 国貞二代 (KUNISADA II)
亀山 極少汚 上縁少トリム
¥25,000



93 貞秀 (SADAHIDE)
再改横浜風景 6枚続
文久元年(1861)
刷良 保存良
各約37.5x25.5cm.
¥180,000



94 芳虎 (YOSHITORA)
亜墨利加国風船 3枚続
慶応3年(1867)
刷良 保存良 少汚
少傷 画帖跡
各約36.8x24.5cm.
¥80,000



95 芳員 (YOSHIKAZU)
北亜墨利加合衆国 (マシンを使う図)
文久元年(1861) 刷良 保存並
汚 少虫穴補修 薄裏打
36.2x24cm. ¥30,000



96 景舛斎 (KEISHOSAI)
東地名 吉原さくら時 明治 (Meiji Period)
刷良 保存良 縁極少汚極少虫穴
25.2x35.7cm. ¥65,000



97 清親 (KIYOCHIKA)
東京名所 東京両国百本杭暁之図 明治12年(1879)
刷良 保存良 少汚 中折
23.2x33cm. ¥80,000



98 清親 (KIYOCHIKA)
東京名所 品川海上眺望図 明治12年(1879)
刷良 保存良 少シミ
23.8x35.4cm. ¥150,000

100 清親 (KIYOCHIKA)
一月中院午前九時写 薩た之富士
明治14年頃 (c.1881)
刷良 保存良
24.5x36.4cm. ¥950,000



99 清親 (KIYOCHIKA)
東京名所 天王寺下衣川 明治13年 (1880)
刷良 保存良 少汚 弱中折
23x34cm. ¥280,000



101 清親 (KIYOCHIKA)
駿州湖日没の富士 2枚続 明治13年 (1880)
刷良 保存良 左図極少シミ
各約35x23.5cm. ¥500,000



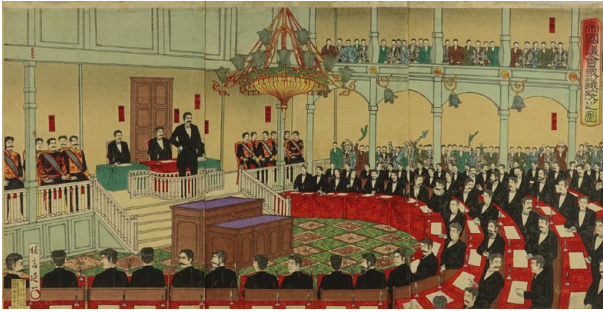
102 周延 (CHIKANOBU)
二重橋より桜田門之景 3枚続 明治20年頃 (c.1880)
刷良 保存良 極少汚 極少シミ 極少虫穴
各約36.8x24.7cm. ¥18,000



104 玉英 (GYOKUEI)
東京湾より富士を見る図
団扇絵 明治20年頃 (c.1889)
刷良 保存良
約24x24.7cm. ¥7,000



103 探景 (IKKEI)
赤坂假皇居及太政官眞景 3枚続 明治18年 (1885)
刷良 保存良 極少穴補修
各約35.5x24cm. ¥20,000



105 延一 (NOBUKAZU)
帝国議会衆議院之図 3枚続 明治23年 (1890)
 刷良 保存良 極少汚 極少シミ
 各約36.8x25cm. ¥35,000



106 月岡耕漁 (TSUKIOKA KOGYO)
皇都三十年祝賀会 丸の内式場の場 3枚続 明治31年 (1898)
 刷良 保存良 極少汚
 各約37.5x25.2cm. ¥35,000



107 国芳 (KUNIYOSHI)
通俗三国志 関羽五關破図
 3枚続 嘉永6年 (1853)
 刷良 保存良 極少虫穴補修
 各約37.5x25.5cm. ¥550,000



108 国芳 (KUNIYOSHI)
通俗三国志之内 馬超大戦渭水橋曹操髭切敗走
 3枚続 嘉永6年 (1853)
 刷良 保存良 極少汚 極少虫穴補修
 各約37x25.4cm. ¥400,000



109 国芳 (KUNIYOSHI)
三国志長板橋の図 3枚続 嘉永5年 (1852)
 刷良 保存極良 但極少墨汚
 各約37.5x26cm. ¥580,000



110 国芳 (KUNIYOSHI)
二十四孝童子鑑 王哀 弘化頃 (c.1844)
 刷良 保存良 極少汚 極少ヤケ 角少破補修
 25.3x35.5cm. ¥120,000



111 芳虎 (YOSHITORA)
保元軍記 白川殿合戦 3枚続 天保頃 (c.1830)
刷良 保存並 少汚 少シミ 傷 極少虫穴
各約37.7x25.5cm. ¥35,000



112 芳兼 (YOSHIKANE)
粟津原大合戦図 3枚続 嘉永頃 (c.1848)
刷良 保存良 極少虫及端傷補修
各約36.8x25.3cm. ¥120,000



113 国芳 (KUNIYOSHI)
曾我致宗本意を達し右幕下の本陣へ切込み捕縛るの図 曾我夜討之図 6枚続 弘化頃 (c.1844)
刷良 保存良 極少虫穴補修
各約37.2x25.5cm. ¥350,000

115~119 芳虎 (YOSHITORA)
忠臣義士銘々伝 元治元年 (1864)
特記なき限り刷良 保存良 極少汚
各約25x18.5cm.



115 は 尾久田孫大夫藤原重盛
極少虫穴 ¥15,000



114 広重 (HIROSHIGE)
信州川中島合戦之図 故人春亭画応需広重模画 3枚続
弘化頃 (c.1844) 刷良 保存良
各約38x25.5cm. ¥200,000



116 に 真世忠太夫紀正明
極少シミ ¥15,000



117 ほ 若柿玄蔵藤原正賢
極少シミ ¥15,000



118 ら 織部矢兵衛源金丸
極少虫穴 ¥15,000



119 の 早野和輔藤原常成
¥15,000



121 芳年 (YOSHITOSHI)
 仮寝のきぬぎぬ 3枚続 万延元年 (1860)
 刷良 保存良 極少汚 少トリム 中図極少虫穴 左図右縁少破補修
 各約35.5x24cm. ¥120,000



120 芳幾 (YOSHIKU)
 英名二十八衆句 十木伝七
 慶応2年 (1866)
 刷良 保存良 極少汚
 37.3x24.8cm. ¥70,000

122～125 芳年 (YOSHITOSHI) 魁題百撰相 明治元年 (1868)
 特記なき限り刷良 保存良



122 塙団右衛門
 極少シミ 極少ヤケ 少トリム
 35.5x24.7cm. ¥85,000



123 木村長門守重成
 左縁綴跡 少トリム
 35.3x24.5cm. ¥80,000



124 鈴木飛騨守重幸
 下部少シミ及傷 綴穴 薄裏打
 37.5x25.5cm. ¥45,000



125 滋野左衛門幸村
 保存並 少汚 少傷 裏打残
 トリム 35x23.8cm. ¥40,000



126 芳年 (YOSHITOSHI) 本朝義盜競 3枚続
 慶応元年 (1865) 刷良 保存良 各約37.4x25.5cm. ¥80,000



127 芳年 (YOSHITOSHI)
 豊臣昇進録 3枚続 明治元年頃 (c.1868)
 刷良 保存良 縁極少汚及極少シミ 左図極少虫穴
 各約37x25cm. ¥50,000



128 芳年 (YOSHITOSHI)
 近世奇説年表 豪商に談判 / 連行 / 両国橋梟首 3枚 明治7年 (1874)
 刷良 保存良 少汚 少傷 一図左縁破及び薄裏打 一図左トリム及薄裏打
 各約35.5x24.5cm. ¥100,000

※このシリーズ3枚で完揃と思われる。
 (「芳年」(岩切由里子著, 平凡社, 2014)にはこの3図のみリストされている。)



129 芳年 (YOSHITOSHI)
 名譽新談 借月照
 明治7年 (1874)
 刷良 保存良 薄み
 少傷補修 トリム
 35.4x23.2cm. ¥15,000



130 芳年 (YOSHITOSHI)
 情得感壇形 花曇
 紅梅丸 沢村訥升
 明治9年 (1876)
 刷良 保存良 左縁極少シワ
 少トリム 薄裏打
 36x23.9cm. ¥45,000



131 芳年 (YOSHITOSHI)
 東京両国橋之図 後刷 3枚続 明治 (Meiji Period)
 刷並 保存良 極少汚 極少シミ 極少傷
 各約37.4x24.9cm. ¥80,000
 * 初刷は明治8年頃

132・133 芳年 (YOSHITOSHI)
 東京開化狂画名所 明治14年 (1881)
 刷良 保存良 各約36.5x24cm.



132 芝神明社内矢場女の
 羅生門 / 浅草観音年の市
 蓋幣の仁王 ¥25,000



133 墨堤三圍社野狐の愉快 /
 招魂社馬のり名人 ¥25,000

134~138
 芳年 (YOSHITOSHI)
 大日本名將鑑
 明治11~13年 (1878-80)
 特記なき限り刷良 保存良



134 六條判官為義
 下縁少トリム 裏打跡
 34.5x23cm. ¥45,000



135 常陸掾平貞盛
 平親王将門 下縁少トリム
 34.5x23.1cm. ¥35,000



136 御曹司牛若丸
 少汚 少シミ 破補修
 37.1x25.6cm. ¥20,000



137 小松内大臣平重盛
 少汚 極少シミ
 35.5x23.8cm. ¥20,000



138 厩戸皇子
 極少汚 極少虫穴
 34.5x22.9cm. ¥35,000

139~141 芳年 (YOSHITOSHI)
 月百姿 明治19~22年 (1886-89)
 特記なき限り刷良 保存良

139 音羽山月 田村明神
 極少汚 極少ヤケ
 37x25cm. ¥35,000

140 豊臣秀次 おもひきや...
 極少汚 極少ヤケ 裏打跡
 35.9x23.7cm ¥50,000

141 月宮迎 竹とり
 極少シミ 少トリム
 35.3x23.4cm. ¥60,000



139



140



141



142
芳年 (YOSHITOSHI)
奥州安達がはら
ひとつ家の図
豎2枚続
明治18年 (1885)
刷良 保存良 少汚
少傷 裏打跡 トリム
各約36x24.2cm.
¥1,200,000



143
芳年 (YOSHITOSHI)
魯智深爛醉打壞
五臺山金剛神の図
豎2枚続
明治20年 (1887)
刷良 保存良
トリム 裏打
各約36x24.3cm.
¥700,000

144~148
芳年 (YOSHITOSHI)
皇国二十四功
特記なき限り刷良 保存良



144 曾我の箱王丸
明治14年 (1881)
シミ トリム 薄裏打
34.5x23.5cm. ¥25,000



145 羽柴筑前守秀吉
明治20年 (1887)
極少汚
36.8x24.8cm. ¥50,000



146 毛谷邨の農六助
明治14年 (1881)
極少汚 少トリム
35.4x23.8cm. ¥40,000



147 加藤主計頭清正
明治26年 (1893)
少汚 折 裏打残
37x24.6cm. ¥30,000



148 鳥居強右衛門勝高
明治28年 (1881)
少汚
36.8x25cm. ¥40,000

149~152 芳年 (YOSHITOSHI) 芳年武者无類 明治16頃~19年 (c.1883-86) 特記なき限り刷良 保存良



149 源三位頼政
縁極少汚
36.8x24.8cm. ¥65,000



150 新中納言平知盛
保存並 少汚 少シミ 少傷
少トリム 35.5x23.2cm. ¥35,000



151 主計頭加藤清正
極少汚 少トリム 裏打
35.5x24cm. ¥40,000



152 曾我五郎時宗 五所五郎丸
縁極少汚
36.6x24.8cm. ¥60,000

153・154 芳年 (YOSHITOSHI) 芳年武者无類
 明治16年 (1883) 特記なき限り刷良 保存良 極少汚
 トリム 裏打に墨書 各約35x23.5cm.



153 遠藤武者盛遠
 ¥35,000



154 相模守北条最明寺入道
 時頼 極少ヤケ ¥35,000

155・156 風俗三十二相 明治21年 (1888) 各約35.2x23.5cm.



155 のみたそう 安政年間
 町芸者俗二酌人之風俗
 刷良 保存並 少汚 少シミ
 縁少傷 少トリム ¥50,000



156 じれったさう 嘉永年間
 鳶妻の風俗
 刷良 保存良 極少汚 極少シミ
 少トリム 薄裏打 ¥70,000



157 芳年 (YOSHITOSHI)
 新形三十六怪撰 さぎむすめ
 明治22年 (1889)
 刷良 保存良
 37x25.4cm. ¥250,000



158 芳年 (YOSHITOSHI)
 新形三十六怪撰
 老婆鬼腕を持去る図
 明治22年 (1889)
 刷良 保存良 極少汚 極少シミ
 36.5x25cm. ¥200,000



159 芳年 (YOSHITOSHI)
 新形三十六怪撰 藤原秀郷
 龍宮城蜈蚣射るの図
 明治23年 (1890)
 刷良 保存良
 36.8x25cm. ¥150,000



160 芳年 (YOSHITOSHI)
 新形三十六怪撰 保多舞とうろう
 明治24年 (1891)
 刷良 保存良
 37x25.3cm. ¥180,000



161 芳年 (YOSHITOSHI)
 新形三十六怪撰 地獄太夫悟道の図
 明治23年 (1890)
 刷良 保存良 縁極少汚
 37x25.2cm. ¥200,000



162 小早川隆景彦山ノ天狗
問答之図 明治25年(1892)
右下極少シミ 少トリム ¥180,000



163 小早川隆景 彦山ノ天狗
問答之図 明治25年(1892)
少トリム ¥120,000



164 藤原実方の執心雀となるの図
明治23年(1890)
極少汚 中折 ¥120,000

163~168
芳年 (YOSHITOSHI)
新形三十六怪撰
特記なき限り刷良 保存良
各約35.5x24cm.



165 仁田忠常洞中に奇異を
見る図 明治23年(1890)
裏打 少トリム ¥100,000



166 奈須野原殺生石之図
明治35年(1902)
少トリム ¥100,000



167 大物之浦に靈平知盛海上
に出現之図 明治25年(1892)
極少汚 極少シミ 少トリム ¥80,000



168 秋風のふくにつけても..業平
明治23年(1890) 極少汚 少汚
少傷 極少破 ¥80,000



169 芳年 (YOSHITOSHI) 太平記姉ヶ波大合戦志村政蔵
勇戦之図 3枚続 明治元年(1868) 刷良 保存並 少汚
傷 極少虫穴 各約35.5x25cm. ¥45,000



170 芳年 (YOSHITOSHI) 鹿兒島戦争記 川尻本營之図 3枚続
明治10年(1877) 刷良 保存良 極少シミ 各約37x25cm. ¥28,000



171 芳年 (YOSHITOSHI)
假名読珍聞309号 明治10年(1877)
刷良 保存極良
37x25cm. ¥25,000



172 芳年 (YOSHITOSHI)
薩州鹿兒島征討記之内 3枚続 明治10年(1877)
刷良 保存良 端少傷 薄裏打
各約35.5x23.96cm. ¥25,000



173 芳年 (YOSHITOSHI)
鹿兒島明暗録 巡查某
明治11年(1878) 刷良 保存良
下部少シミ 36.5x25cm. ¥18,000



174 芳年 (YOSHITOSHI) 征西平穩記 3枚続
明治11年(1878) 刷良 保存良 シワ 裏打
各約35x24.5cm. ¥20,000



175 周延 (CHIKANOBU) 西海暴動電信紀聞 3枚続
明治10年(1877) 刷良 保存良 左図極少シミ
各約37x25cm. ¥28,000



176 周延 (CHIKANOBU) 鹿児島新聞 美々津川大戦争
3枚続 明治10年(1877) 刷良 保存良
各約36.9x25cm. ¥28,000



177 孟斎 (MOSAI) 鹿児島島の賊軍熊本城激戦図 3枚続
明治10年(1877) 刷良 保存良 縁極少傷
各約37x25.4cm. ¥20,000

179~182 芳宗 (YOSHIMUNE)
撰雪六々談 明治25~26年(1892-23)
特記なき限り刷良 保存良 少ヤケ 各約37x25cm.



179 義心の鉦
極少汚 極少シミ ¥18,000



180 妙法の奇端
少汚 少シミ ¥18,000



178 芳艶二代 (YOSHITSUYA II) 西南鎮定賞賜図 3枚続
明治10年(1877) 刷良 保存良 極少汚 右図極少シミ
各約37.3x25.4cm. ¥15,000



181 佐野の夕暮
極少汚 ¥20,000



182 天目山 武田勝頼
極少汚 極少シミ ¥18,000



183 年章 (TOSHIKI) 教訓歴史画解 源義家 3枚続
明治30年(1897) 刷良 保存良 少汚 極少シミ 右図左下角折
各約37.5x25.3cm. ¥18,000



184 呂雪 (ROSETSU)
都平安城外勇戦之図
小松内大臣重盛 悪源太義平
3枚続 明治30年(1897)
刷良 保存良 極少汚 中図極少シミ
各約36.9x25cm. ¥120,000



186 周延 (CHIKANOBU) 鶴越 3枚続
明治26年 (1893) 刷良 保存良
各約36.9x25cm. ¥140,000



185 周延 (CHIKANOBU) 源平雪月花之内 花 3枚続
明治 (Meiji Period) 刷良 保存極良
各約36.6x24.8cm. ¥55,000



187 呂雪 (ROSETSU) 川中島激戦之図 3枚続
明治30年 (1897) 刷良 保存良 極少シミ
各約35.5x25.2cm. ¥130,000



188 小国政 (KOKUNIMASA) 大徳寺ノ焼香ニ秀吉諸将ヲ挫ク
3枚続 明治29年 (1896) 刷良 保存良 極少汚
各約37.8x25.8cm. ¥40,000



189 周延 (CHIKANOBU) 賤ヶ嶽合戦 加藤帋之助 山路将監 3枚続
明治30年頃 (c.1897) 刷良 保存良 左図少破補修
各約37.8x26cm. ¥120,000



190 豊宣 (TOYONOBU)
新撰太閤記 時は得難く失ひ易し
桶狭間合戦 首実検 2枚続
明治16年 (1883)
刷良 保存極良
各約37.5x25cm. ¥20,000



191 豊宣 (TOYONOBU)
新撰太閤記
三法師丸 大徳寺ノ焼香
2枚続 明治16年 (1883)
刷良 保存良 極少汚
各約36.5x24.8cm. ¥15,000

192 豊国 (TOYOKUNI)
「年々歳々砂石川」 竪3枚続
文化8年 (1811) 3月中村座
刷良 保存並 退色 汚 傷
少虫穴補修 中折
各約36.9x24.6cm. ¥85,000





194 豊国 (TOYOKUNI)
七世市川團十郎 水売り 景清
文化8年 (1811)
刷良 保存良 少汚 少トリム 綴穴
37.1x25.5cm. ¥200,000



193 豊国 (TOYOKUNI)
役者舞台姿絵 音羽屋
尾上松助の大星由良助
寛政6年頃 (c.1794)
刷良 保存並 少退色 少汚
少シミ 少ヤケ 少傷補修
38.7x24.7cm. ¥270,000



195 国安 (KUNIYASU)
風流五雁金 5枚続
文化頃 (c.1818)
刷良 保存良 少汚
少傷 折 裁ち及貼付
各約38.5x25.5cm.
¥100,000



196 国貞 (KUNISADA)
沢村訥升 小町桜のせい
天保11年 (1840) 3月 中村座
刷良 保存良
少汚 少シミ 少傷
37x25.8cm.
¥12,000



197 広重 (HIROSHIGE)
浄る町繁花の図
嘉永5年 (1852)
刷良 保存良 少傷
37.1x25.5cm.
¥120,000



198 豊国三代 (TOYOKUNI III)
阿古屋 嘉永頃 (c.1848)
刷良 保存良 極少虫穴 薄裏打
25x36.1cm. ¥13,000



199 豊国三代 (TOYOKUNI III)
「恋飛脚大和往来」 3枚続
嘉永4年 (1851) 3月 河原崎座
刷良 保存良
左図少シワ 裏打跡
各約36x24.8cm. ¥12,000



200 豊国三代 (TOYOKUNI III)
「入船曾我和取楫」3枚続
安政4年(1857)2月 守田座
刷良 保存良 右下図極少シミ
各約35.8x24.4cm. ¥120,000

203～209
豊国三代 (TOYOKUNI III)
近世水滸伝
文久元～2年(1861-62)
特記なき限り刷良 保存良
極少汚 少トリム
各約35x24cm.



203
提緒の猪之助 河原崎権十郎
¥26,000



204
木隠の霧太郎 坂東三津五郎
¥26,000



205
羅漢の武蔵 市川九蔵
極少シミ 極少虫穴 ¥25,000



206 徳名舟万吉 沢村田之助
¥26,000



207 波切重三 尾上梅幸
左下極少虫穴補修 ¥28,000



208 なだれの岩松 市川市蔵
¥28,000



209 井岡の捨五郎 沢村訥升
少汚 ¥25,000



201 豊国三代 (TOYOKUNI III)
「染分紅地江戸棲」3枚続 安政5年(1858)10月 中村座
刷良 保存良 極少汚 極少シミ 少虫穴補修 薄裏打
各約37x25.5cm. ¥18,000



202 豊国三代 (TOYOKUNI III)
「鬼一法眼三略絵巻」3枚続 文久元年(1861)9月 市村座
刷良 保存良
各約35.3x25cm. ¥18,000

210～213 豊国三代 (TOYOKUNI III) 近世水滸伝 文久年 (1862) 特記なき限り刷良 保存良 極少汚 少トリム 各約35x24cm.



210 桐嶋辰五郎 坂東彦三郎
極少虫穴 綴穴 ¥25,000



211 神楽囃子雷八 中村鶴蔵
¥23,000



212 蟹の阿宅 岩井桑三郎
極少シミ 少傷 綴穴 ¥26,000



213 浪形紋弥 沢村田之助
¥28,000



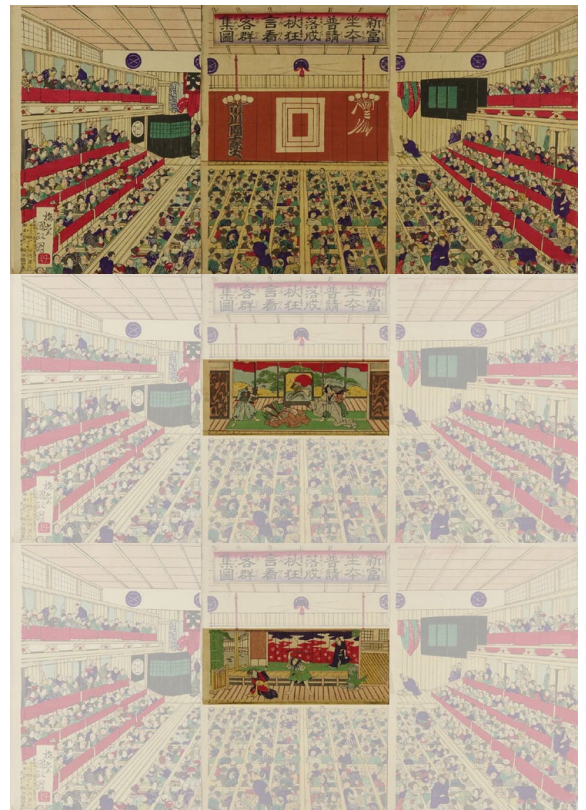
214 芳幾 (YOSHIKU)
「助六所縁江戸桜」3枚続 文久2年 (1862)
刷良 保存良 極少傷
各約38x26cm. ¥25,000



215 国周 (KUNICHIKA)
総ざらい将棋の駒組 3枚続 慶応元年 (1865)
刷良 保存良 中図極少シミ
各約38x25.5cm. ¥85,000



216 国政四代 (KUNIMASA IV)
千歳座新狂言替利絵 仕掛付 明治19年 (1886)
刷良 保存良 極少シミ 極少傷 上縁に墨書
23.3x34.8cm. ¥80,000



217 国政四代 (KUNIMASA IV)
新富座本普請落成 秋狂言看客群集図
仕掛付 3枚続 明治11年 (1878)
刷良 保存良 極少汚 右図少シミ
各約36.8x25.2cm. ¥100,000



218 国政四代 (KUNIMASA IV)
東京新富町守田座大入之図
3枚続 明治6年(1872)
刷良 保存極良
各約37x25.5cm. ¥70,000



219
国周・暁斎 (KUNICHIKA / KYOSAI)
地名十二ヶ月之内 三月
尾上菊五郎 小島三郎
明治15年(1882)
刷良 保存良 極少汚
極少シミ 少虫穴及破補修
37.5x25cm. ¥18,000



220 芳虎 (YOSHITORA)
假名手本忠臣蔵 12枚揃 明治 (Meiji Period)
刷良 保存良 少汚 少傷 薄裏打
各約24.5x36cm. ¥60,000



221 国周 (KUNICHIKA) 「実成秋清正伝記」3枚続
明治8年(1875)10月 新堀座 刷良 保存良 極少汚
中図及右図縁少破 各約36.3x25cm. ¥10,000



222 周延 (CHIKANOBU)
「千代誉松山美談」3枚続 明治14年(1881)3月 新富座
刷良 保存極良 各約37x24.8cm. ¥13,000



223 周重 (CHIKASHIGE)
「千代誉松山美談」3枚続 明治14年(1881)3月 新富座
刷良 保存極良 但中図極少穴 各約36.8x24.9cm. ¥12,000



224 周重 (CHIKASHIGE)
「千代誉松山美談」3枚続 明治14年(1881)3月 新富座
刷良 保存極良 各約36.2x24.8cm. ¥10,000



225 周重 (CHIKASHIGE)
「千代誉松山美談」3枚続 明治14年(1881)3月 新富座
刷良 保存極良 各約37x25cm. ¥10,000



226 国周 (KUNICHIKA)
兜軍記 3枚続 明治17年(1884)正月 市村座
刷良 保存極良 但中図極少酸化傷 各約37.3x24.4cm. ¥15,000



227 国周 (KUNICHIKA)
「新清水花御所染」3枚続 明治19年 (1886) 4月市村座
刷良 保存良
各約37.3x25.2cm. ¥13,000



228 国周 (KUNICHIKA)
歌舞伎座新狂言「春興鏡獅子」3枚続 明治26年 (1893)
刷良 保存良 少ヤケ 少シミ
各約36.5x25.5cm. ¥25,000



229 香朝楼 (KOCHORO)
日蓮大士真実伝 本間館星際 of 馬 3枚続 明治27年 (1894)
刷良 保存極良
各約37.5x25cm. ¥25,000



230 国周 (KUNICHIKA)
歌舞伎座 中幕 和田合戦女舞鶴 3枚続 明治30年 (1897)
刷極良 保存極良 但中図極少シミ
各約36.5x25cm. ¥45,000



231 香朝楼 (KOCHORO)
歌舞伎座 中幕 和田合戦女舞鶴 3枚続 明治30年 (1897)
刷良 保存極良
各約37.5x25cm. ¥35,000



232 香朝楼 (KOCHORO)
歌舞伎座 中幕 和田合戦女舞鶴 3枚続 明治30年 (1897)
刷良 保存極良 但中図極少シミ
各約37x25cm. ¥33,000



235 無款 (UNSIGNED)
坂東しうか追善絵 安政2年 (1855)
刷良 保存良 極少汚
34.9x24cm. ¥13,000



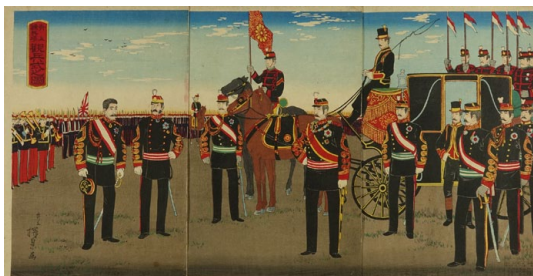
236 年英 (TOSHIHIDE)
九代目市川團十郎追善絵
明治36年 (1903)
刷良 保存良 極少シミ
37.5x25.5cm. ¥25,000



233 梅堂 (BAIDO)
「侠客春雨傘」3枚続 明治30年 (1897) 4月 歌舞伎座
刷良 保存良 極少汚 極少シミ
各約37.4x25.4cm. ¥25,000



234 梅堂 (BAIDO)
「侠客春雨傘」3枚続
明治30年 (1897) 4月 歌舞伎座
刷極良 保存極良 但右図極少シミ
各約36.8x24.5cm. ¥20,000



237 探景 (TANKEI) 青山練兵場觀兵式之図 3枚続
明治22年(1889) 刷良 保存良 極少汚 左図右縁極少シミ
各約37x25.2cm. ¥22,000



239 年方 (TOSHIKATA) 鎮川地方ニ五名ノ日本工兵
清兵百余人ヲ撃退ク 3枚続 明治27年(1894)
刷良 保存良 極少汚 各約37x24.8cm. ¥18,000



241 無款 (UNSIGNED) 我斥候台北府之敵陣ヲ窺フ之図
3枚続 明治27年(1894) 刷良 保存極良
各約37x24.8cm. ¥38,000



243 年方 (TOSHIKATA) 樋口大尉 3枚続
明治28年(1895) 刷良 保存良 極少ヤケ
各約37x25cm. ¥25,000



245 小国政 (KOKUNIMASA) 田庄台激戦我軍占領ス
3枚続 明治28年頃(c.1895) 刷良 保存良 極少インク汚
各約37x24.8cm. ¥22,000



247 年章 (TOSHIKI) 我第二軍摩天嶺之砲台占領之図
3枚続 明治28年(1895)
刷良 保存良 極少汚 極少ヤケ
少シミ 左図極少破補修 中折
各約37x25cm. ¥18,000



238 延一 (NOBUKAZU) 栃木県大演習之図 3枚続
明治25年(1892) 刷良 保存極良
各約37.5x24.8cm. ¥20,000



240 吟光 (GINKO) 松崎大尉安城川ニ勇戦 3枚続
明治27年(1894) 刷良 保存良 極少汚 左図極少シミ 中折
各約37x25cm. ¥18,000



242 月耕 (GEKKO) 旅順口陥落之図 3枚続
明治27年(1894) 刷良 保存良 極少汚 縁少シミ及傷
各約36.7x25.2cm. ¥16,000



244 英一 (EIICHI) 威海衛先発ノ陸軍隊百尺崖所ノ砲台ヲ
占ム 3枚続 明治28年(1895) 刷良 保存良 少ヤケ
各約36.8x25.5cm. ¥18,000



246 年方 (TOSHIKATA) 樋口大尉 3枚続 明治28年(1895)
刷良 保存良 極少シミ
各約37.5x24.7cm. ¥23,000



248 小国政 (KOKUNIMASA) 大日本威衛大勝利 3枚続
明治28年頃(c.1895) 刷良 保存良 極少シミ
各約37x24.7cm. ¥18,000



249 清親 (KIYOCHIKA) 我軍占領劉公島之図 3枚続
明治28年(1895) 刷良 保存極良
各約37x24.8cm. ¥30,000



250



251



252

250~251 清親 (KIYOCHIKA)
陸海軍人高名鑑 明治29年(1896)
特記なき限り刷良 保存良 少汚
少シミ 裏打残
各約36x25cm.

250 小松宮大將殿下 ¥20,000

251 野津陸軍大將 ¥20,000

252 目録 汚 シミ ¥15,000

253・254 米作 (BEISAKU)
日清戦争忠勇美鑑 明治28年(1895)
特記なき限り刷良 保存良 27.6x25cm.



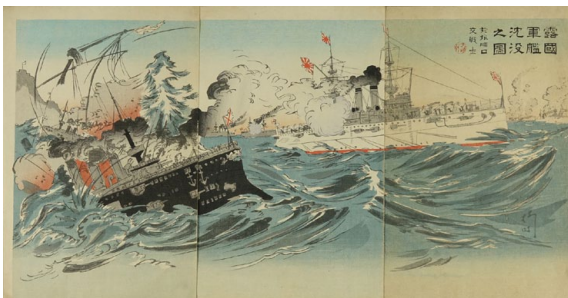
255 美邦 (BIHO) 七星門外斥候衝突 3枚続
明治37年(1904) 刷極良 保存極良
各約37.2x25.4cm. ¥45,000



253 第一師団工兵 小野口
徳次氏 弱中折 ¥25,000



254 陸軍大尉
松崎直臣氏 ¥25,000



256 柳哇 (RYUA) 露国軍艦沈没之図 於旅順口交戦
3枚続 明治37年(1904) 刷良 保存良 極少汚 右図少ヤケ
各約37x24.3cm. ¥35,000



257 柳哇 (RYUA) 日露戦争電報実記 馬賊満州鉄道ヲ破壊ス
3枚続 明治37年(1904) 刷良 保存良 極少汚
各約37.5x25.3cm. ¥48,000



258 年英 (TOSHIHIDE) 陸上之第一戦 定州城ニ於テ...
3枚続 明治37年(1904) 刷良 保存良 少シミ 折
各約37.5x25cm. ¥18,000



259 耕年 (KONEN) 我軍一斉突撃占領南山 3枚続
明治37年(1904) 刷極良 保存極良
各約37x25.5cm. ¥45,000



260 豊成 (TOYONARI)
十三世守田勘弥
ジャン・バルジャン
大正10年 (1921)
刷極良 保存極良
41.5x28.5cm. ¥330,000



261 吉田博 (YOSHIDA HIROSHI)
東京拾二題 亀井戸 自摺
昭和2年 (1927)
刷極良 保存極良
40x26.8cm.
¥380,000



262 吉田博 (YOSHIDA HIROSHI)
桜八題 嵐山 自摺
昭和10年 (1935)
刷極良 保存極良 裏にテープ残
40.4x27cm.
¥380,000



263 吉田博 (YOSHIDA HIROSHI)
上野公園 自摺 昭和12年 (1937)
刷極良 保存極良
39.6x27.2cm. ¥380,000



264 吉田博 (YOSHIDA HIROSHI)
陽明門 自摺 昭和12年 (1937)
刷極良 保存極良
39.8x27.2cm. ¥380,000



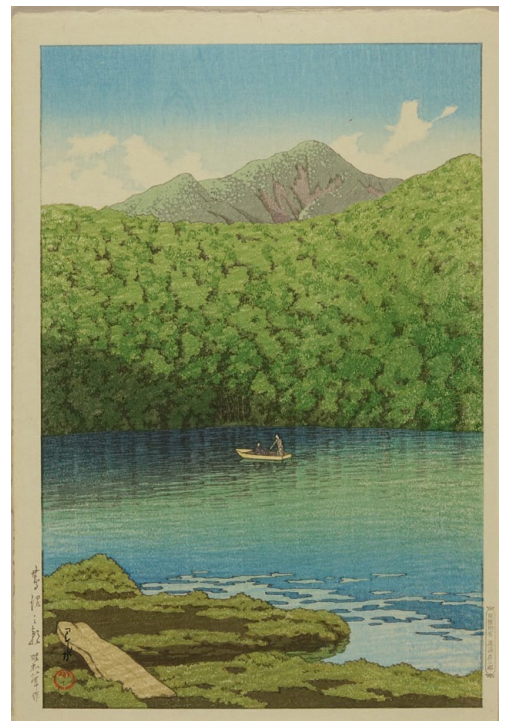
265 吉田博 (YOSHIDA HIROSHI)
動物園 於ほばたんあうむ
大正15年 (1926)
刷良 保存極良
42.5x27.4cm. ¥90,000



266 大野麦風 (OHNO BAKUFU)
はぜ 昭和10年頃 (c.1935)
刷良 保存良 上角極少シミ
27.9x39.5cm. ¥45,000



267
川瀬巴水 (KAWASE HASUI)
松島 材木島 昭和8年 (1933)
刷極良 保存極良
38.6x26cm.
¥750,000



268
川瀬巴水 (KAWASE HASUI)
鳶沼の朝 昭和8年 (1933)
刷極良 保存極良
38.8x26.3cm. ¥850,000



270 川瀬巴水 (KAWASE HASUI)
北海道大沼公園 昭和9年 (1934)
刷極良 保存極良
38.7x26cm. ¥750,000



269
川瀬巴水 (KAWASE HASUI)
後志 セタカムイ岩
昭和8年 (1934)
刷極良 保存極良
38.6x26cm.
¥750,000



271 川瀬巴水 (KAWASE HASUI)
東海道風景選集 相州前川の雨
昭和7年 (1932) 版元印無
刷良 保存極良
38.7x26cm. ¥150,000

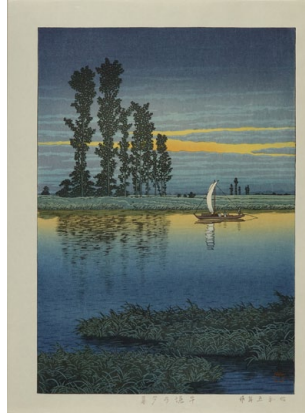


272 川瀬巴水 (KAWASE HASUI)
安庭之雨 昭和21年 (1946) 版元印無
刷良 保存極良
26x35.7cm. ¥200,000

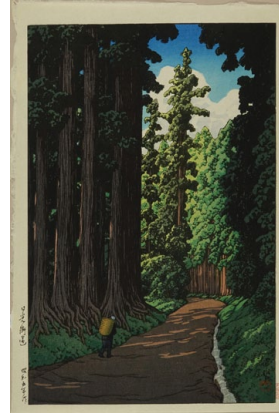
川瀬巴水 (KAWASWE HASUI) 後刷 Posthumous deition 特記なき限り 渡邊版 刷良 保存極良 各約39x26cm each approx.



273 代地の雪 伊せ辰版
大正14年 (1925) ¥90,000



274 牛堀の夕暮 酒井川口版
昭和5年 (1930) ¥90,000



275 日光街道
昭和5年 (1930) ¥90,000



276 修善寺の雨
昭和8年 (1933) ¥100,000



277 奈良春日神社
昭和8年 (1933) ¥90,000



278 小樽之波止場
昭和8年 (1933) ¥90,000



279 大坂宗右衛門町の夕
昭和8年 (1933) ¥90,000



280 根津権現の雪
昭和8年 (1933) ¥100,000



281 熊本城宇土櫓
昭和23年 (1948) ¥95,000



282 京都大原三千院
昭和24年 (1949) ¥85,000



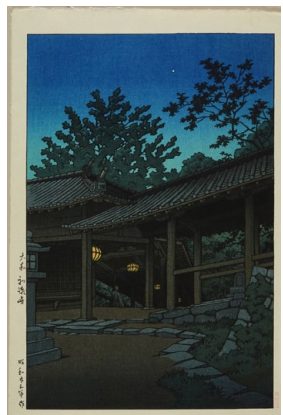
283 塩原猿岩
昭和24年 (1949) ¥95,000



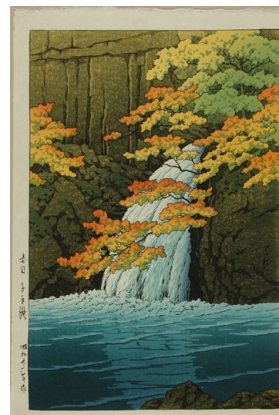
284 塩原乃秋
昭和25年 (1950) ¥95,000



285 清水寺の暮雪
昭和25年 (1950) ¥95,000



286 大和初瀬寺
昭和25年 (1950) ¥100,000



287 赤目 千手瀧
昭和26年 (1951) ¥95,000



288 銀閣寺の雪
昭和26年 (1951) ¥95,000

- 1 RYUSHI: Portrait of the courtesan Tsukioka and *kamuro*, from *Seiro bijin awase* (Collection of beauties of the pleasure quarters), c.1808--Good impression and condition, very slightly soiled and creased near edges
39x26.4cm. ¥280,000
- 2 SHUNSEN: Parody of *Azuma kudari* (Descending to the east), from *Ise monogatari* (Tale of Ise), c.1804--Good impression, fair condition, slightly stained, a mirrored wormhole, centerfold, backing residue
25.5x38.4cm. ¥25,000
- 3 SHUNSEN: Women waiting for hanging basket, c.1804--Good impression and condition, centerfold
25.5x38.6cm. ¥40,000
- 4 SHUNSEN: Abalone divers, c.1804--Good impression and condition, centerfold
24.5x38.5cm. ¥55,000
- 5 SHUNSEN: Scene of salt making, c.1804--Good impression and condition, very slightly soiled, small repairs on both end of centerfold
25.5x38.5cm. ¥30,000
- 6 EIZAN: *Sensoji kure no ichi* (Year-end market at Sensoji temple), from *Toto meissho hakkei* (Eight views of famous places of the eastern capital), 1812--Good impression and condition, very slightly soiled and creased, a few minute wormholes
39x25.8cm. ¥680,000
- 7 EIZAN: Standing beauty before iris, from *Furyu gosekku* (Elegant five festivals), c.1830--Good impression, fair condition, very soiled and stained, some minor damage repaired
34x22.8cm. ¥45,000
- 8 EIZAN: A couple, c.1814--Good impression and condition, very slightly soiled, centerfold
25.5x38.6cm. ¥150,000
- 9 KUNIYOSHI: A couple and nursing cat, c.1830--Good impression, fair condition, slightly soiled, worn, a minor wormhole, centerfold
21.1x35cm. ¥50,000
- 10 EISEN: Beauty carrying a baby, titled *Kakukyo* (Guo-ju), from *Ukiyo nijushiko* (Twenty-four filial pieties of the floating world), c.1818--Good impression and condition, very slightly creased
38x26cm. ¥180,000
- 11 EISEN: Portrait of the courtesan Oryoku of Ebiya, with floral reserve with a view of Hirakawa Tenjin Shrine, from *Keisei Edo hogaku* (Courtesans and directions of Edo), c.1830--Good impression and condition, very slightly soiled, damage on upper corners repaired
38.6x26.1cm. ¥50,000
- 12 SENCHO: Beauty in the rain holding an umbrella, titled *Kitazawa no botan* (Peony at Kitazawa Hachiman Shrine), c.1830--Good impression and condition, very slightly soiled and stained
37.5x25.8cm. ¥80,000
- 13 KUNIYASU: Beauty holding a *shamisen*, from *Bijin hana awase* (Collection of beauties and flower), c.1818--Good impression, fair condition, faded, toned, and worn, slightly soiled
34.5x22.7cm. ¥30,000
- 14 KUNIYASU: Beauty at Myogen Shrine at Yanagishima, c.1830--Good impression and condition, slightly soiled, very slightly stained, binding holes repaired
35x25cm. ¥70,000
- 15 HOKUSAI: Portrait of Priest Kisen, cursive writing "*Kisen houshi*" forming his robe, c.1830--Good impression and condition, slightly soiled, stained, and worn, some minor wormholes repaired
36.4x25.8cm. ¥180,000
- 16 HOKUSAI: *Surimono* of a saddle, from *Uma zukushi* (Collection of horses), 1822--Good impression and condition, slightly stained
21.1x18.6cm. ¥380,000
- 17 KUNISADA: A beauty applying *ohaguro* (Tooth blacking), from *Kesho san bijin* (Three scenes of beauties making up), c.1818--Good impression and condition, slightly soiled
39.5x26.9cm. ¥350,000
- 18 KUNISADA: Teahouse waitress, from *Hoshi no shimo tosei fuzoku* (Starlight frost and modern manners), c.1819--Good impression and condition, slightly soiled, slightly creased on top
38.3x25.9cm. ¥220,000
- 19 KUNISADA: A beauty holding a fan, with a poem by Shiko, from *Haikai juttetsu no uchi* (Ten great pupils of the poet Matsuo Basho), c.1844--Good impression and condition, very slightly stained, a few minute tears on edges, top corners tear restored
38x25.8cm. ¥30,000
- 20 KUNIYOSHI: Beauties under cherry blossoms in a garden, triptych, c.1848--Fair impressions, good condition, very slightly soiled, some minor tears repaired
36.5x24.8cm. each approx. ¥75,000
- 21 TOYOKUNI III: Genji observing ladies admiring baby, triptych, c.1848--Good impressions and condition
35.5x24.5cm. each approx. ¥70,000
- 22 TOYOKUNI III: Beauties in a peony garden, triptych, c.1848--Good impressions and condition, right edge on right panel trimmed
36x25cm. each approx. ¥55,000
- 23 TOYOKUNI III: Genji and beauties under cherry tree in a garden, subtitled *Hana* (Flower), from *Setsugekka no uchi* (Snow, moon, and flower), triptych, c.1848--Good impressions and condition, minor wormhole on right edge on each sheet
35.5x24.4cm. each approx. ¥80,000
- 24 TOYOKUNI III: Genji and beauties playing *kyokusui* poem party, triptych, 1852--Good impressions and condition, very slightly toned, left panel stained
36.2x25cm. each approx. ¥40,000
- 25 TOYOKUNI III: Beauties and Genji on a terrace overlooking cherry blossom, subtitled *Raku* (Pleasure), from *Kidoairaku no uchi* (Four emotions), triptych, 1854--Good impressions and condition
35.5x24.5cm. each approx. ¥80,000
- 26 TOYOKUNI III: Beauties strolling under cherry blossoms at pleasure quarters of Yoshiwara, triptych, 1854--Fine impressions and condition except a minute wormhole on each panel
37.2x25.8cm. each approx. ¥200,000
- 27 TOYOKUNI III: Scene of girls' festival, Genji and beauties in an interior, triptych, 1855--Fair impressions, good condition, slightly faded and toned, center crease
37x25.5cm. each approx. ¥45,000
- 28 TOYOKUNI III: Scene of girls' festival, triptych, 1854--Good impressions and condition, a minor wormhole on each panel
38x25.5cm. each approx. ¥180,000
- 29 TOYOKUNI III: Genji and beauties enjoying singing of insects, triptych, 1864--Good impressions and condition
35.8x24.7cm. each approx. ¥70,000
- 30 TOYOKUNI III: Scene of the story *Sendai hagi*, triptych, 1858--Good impressions, fine condition
37.5x25.7cm. each approx. ¥120,000
- 31 SADAHIDE: *Azuma nishiki sakura kari* (Eastern brocade, Cherry blossom viewing), triptych, c.1848--Good impressions and condition, very slight stain on right panel
37.5x25.5cm. each approx. ¥100,000
- 32 KUNITERU: Genji and beauties admiring full-moon over a garden with autumn leaves, 1853--Good impressions and condition, a few minute wormholes (some repaired), faint centerfold
38.5x27.6cm. each approx. ¥160,000
- 33 KUNICHIKA: Beauties under cherry blossom, triptych, 1854--Good impressions and condition, a minor stain on center panel, very slight worn, a few minute damage repaired
36.5x25.5cm. each approx. ¥80,000
- 34 TOYOKUNI IV: View of an interior of Matsumoto, Shin-Yoshiwara, 1871--Good impressions and condition, a minor stain on center panel
37x25cm. each approx. ¥18,000
- 35 KUNICHIKA: Matsumoto Restaurant at Fukagawa, from *Kaika sanjuroku kaiseki* (Thirty-six famous restaurants and views of civilization), 1878--Good impression and condition, very slightly soiled
36x25cm. ¥10,000

- 36 KUNICHKA: Daishichi Restaurant at Imado, from the same series as above, 1878--Good impression and condition, very slightly soiled
36.5x25cm. ¥12,000
- 37 KUNICHKA: Ryukotei Restaurant at Yanagibashi, from the same series as above, 1878--Good impression and condition, very slightly soiled
35.8x25cm. ¥12,000
- 38 KUNICHKA: Nakamura Restaurant at Ryogoku, from the same series as above, 1878--Good impression and condition, very slightly soiled, a minute wormhole in lower margin
36.5x24.8cm. ¥10,000
- 39 TOSHIKATA: Beauty and servants on a terrace overlooking moonlit Lake Biwa, from *Setsugekka no uchi* (Snow, moon, and flower), triptych, 1884--Good impressions and condition, very slightly soiled and stained, slightly toned and trimmed, very slight damage along edges
34.4x23.8cm. each approx. ¥20,000
- 40 NOBUKAZU: Beauties playing music in an interior with view of snow-covered garden, triptych, 1890--Good impressions and condition, very slightly toned and stained
36.8x25cm. each approx. ¥25,000
- 41 CHIKANOBU: King and queens of various countries, triptych, 1879--Good impressions and condition, slightly trimmed, backed
35x23.5cm. each approx. ¥18,000
- 42 CHIKANOBU: *Choki yayoi seika ikusa no tawamure* (Noble ladies playing fight with cherry branch), triptych, 1880--Good impression and condition, some minute wormholes
36.8x25cm. each approx. ¥15,000
- 43 CHIKANOBU: *Sato no hana kuruwa no nigiwai* (Flower of Edo, prosperity of the pleasure quarters), triptych, c.1887--Good impressions and condition, slightly soiled and worn, left panel stained
36.8x25.4cm. each approx. ¥18,000
- 44 CHIKANOBU: *Ueno koen kaika zu* (Blooming cherry trees at Ueno Park), triptych, 1888--Fine impressions, good condition, a few tiny stains on center panel
37.5x25cm. each approx. ¥300,000
- 45 CHIKANOBU: *Bonsai*, from *Fujin shoreishiki no zu* (Female etiquette), triptych, 1905--Fine impressions and condition
37x25cm. each approx. ¥200,000
- 46 CHIKANOBU: *Youjo reishiki kyoiku no zu* (Scene of education of etiquette for ladies), triptych, 1891--Good impressions and condition, center panel slightly soiled, right panel very slightly soiled
37x25cm. each approx. ¥25,000
- 47 CHIKANOBU: *Koganei sakura goyuran no zu* (Emperor viewing cherry blossom at Koganei), triptych, 1886--Good impressions and condition, lightly backed
36x23.5cm. each approx. ¥28,000
- 48 CHIKANOBU: Year of rooster (*tori*), from *Mitate junishi* (Parody of twelve zodiac), with a scene of the festival at Otori Shrine, 1887--Good impression and condition, very slightly soiled, slightly trimmed, lightly backed
36x24.3cm. ¥15,000
- 49 CHIKANOBU: Beauty making a folding fan, subtitled *Hana* (Flower), from *Setsugekka* (Snow, moon, and flower), 1899--Good impression and condition
37.7x25cm. ¥30,000
- 50 CHIKANOBU: *Toso* (New Year's spiced sake), from *Fujin shoreishiki no zu* (Female accomplishments), triptych, 1895--Good impressions and condition, backed
35.8x23.8cm. each approx. ¥40,000
- 51 GEKKO: *Hanayome*, (Bride), from *Fujin fuzoku zukushi* (Collection of daily life of women), 1891--Good impression and condition, very slightly soiled
35x24.5cm. ¥15,000
- 52 GEKKO: *Sankyoku* (Ensemble), from the same series as above, 1891--Good impression and condition
35x24.5cm. ¥15,000
- 53 GEKKO: *Gosairei* (Festival), from the same series as above, 1891--Good impression and condition, very slightly soiled
35x24.5cm. ¥15,000
- 54 GEKKO: *Nanakusa no sato* (Garden of seven autumn grass), from the same series as above, 1891--Good impression and condition, very soiled, slightly toned
35x24cm. ¥10,000
- 55 GEKKO: *Sashibana* (Flower arrangement), from the same series as above, 1891--Good impression and condition, very slightly soiled
35x24.5cm. ¥15,000
- 56 KIYOCHIKA: Gift calendar of Kawamata silk refining company, c.1877--Fine impression and condition
36.5x25cm. ¥18,000
- 57 KIYOCHIKA: Table of contents, from *Hana moyo* (Patterns of beauties), 1896--Good impressions and condition, backed
35.9x23.8cm. ¥10,000
- 58 KIYOCHIKA: Keicho Era, from the same series as above, 1896--Good impressions and condition, very slightly soiled, backed
35.9x24cm. each approx. ¥60,000
- 59 KIYOCHIKA: Kan'ei and Shoho Era, from the same series as above, 1896--Good impressions and condition, very slightly soiled, backed
35.5x23.8cm. each approx. ¥60,000
- 60 KIYOCHIKA: Sho'o and Manji Era, from the same series as above, 1896--Good impressions and condition, backed
36x23.8cm. each approx. ¥60,000
- 61 KIYOCHIKA: Kanbun and Genroku Era, from the same series as above, 1896--Good impressions and condition, very slightly soiled and stained, backed
36x23.9cm. each approx. ¥60,000
- 62 KIYOCHIKA: Empo Era, from the same series as above, 1896--Good impressions and condition, backed
35.9x23.8cm. each approx. ¥60,000
- 63 KIYOCHIKA: Kyoho Era, from the same series as above, 1896--Good impressions and condition, very slightly soiled, backed
35.8x23.8cm. each approx. ¥60,000
- 64 KIYOCHIKA: An'ei Era, from the same series as above, 1896--Good impressions and condition, backed
35.8x23.8cm. each approx. ¥60,000
- 65 KIYOCHIKA: Temmei Era, from the same series as above, 1896--Good impressions and condition, very slightly soiled and stained, backed
35.8x23.7cm. each approx. ¥55,000
- 66 KIYOCHIKA: Bunka Era, from the same series as above, 1896--Good impressions and condition, very slightly soiled and stained, backed
35.7x23.8cm. each approx. ¥60,000
- 67 KIYOCHIKA: Tempo Era, from the same series as above, 1896--Good impressions and condition, very slightly soiled and stained, backed
35.7x23.7cm. each approx. ¥70,000
- 68 KIYOCHIKA: Sei Shonagon, from *Kodai moyo* (Patterns of the ancient), triptych, 1896--Good impressions and condition, very slightly soiled and stained, backed
35.7x23.7cm. each approx. ¥60,000
- 69 KIYOCHIKA: Murasaki Shikibu, from the same series as above, triptych, 1896--Good impressions and condition, very slightly soiled and stained, backed
35.7x23.7cm. each approx. ¥60,000
- 70 SHUNTEI: *Bijin junikagetsu* (Beauties of twelve months), twelve triptychs and table of contents, complete, 1898--Fine impressions, good condition, No.6 very slightly stained; No.1,2, and 11 slightly stained; No.12 a spot stain on left panel; No.4 left panel trimmed; table of contents stained and backed
35.5x25.2cm. each approx. ¥1,200,000
- 71 GEKKO: *Nihon hana zue* (Flowers of Japan), thirty-six sheets, and table of contents, complete, 1897--Good impressions and condition, some sheets slightly stained near bottom
35.5x24cm. each approx. ¥380,000
- 72 SHOUN: *Kaya no tsuki* (Moon through mosquito net), from *Ima sugata* (Modern looking), 1906--Fine impression and condition
36.5x24.5cm. ¥140,000

- 73 SHOUN: *Hanare zashiki* (Detached room), from the same series as above, 1907--Fine impression and condition except very slight ink smudge on the bottom
37x25.4cm. ¥140,000
- 74 KIYOKATA: Frontispiece of a novel in Bungei Club magazine, vol. 17-13, 1911--Good impression and condition, original fold lines
31.2x21.9cm. ¥28,000
- 75 KEISHU: Frontispiece of a novel, from Bungei Club magazine, vol. 20-5, 1914--Good impression and condition, original fold lines
29.4x22cm. ¥10,000
- 76 TOSHIKATA: Frontispiece of a novel, from Bungei Club magazine, vol. 6-12, 1900--Good impression and condition, original fold lines
22x29.5cm. ¥6,000
- 77 HANKO: Frontispiece of a novel, from Bungei Club magazine, vol. 12-9, 1906--Good impression and condition
21.7x30.3cm. ¥7,000
- 78 KEISHU: Frontispiece of a novel, from Bungei Club magazine, vol. 18-4, 1912--Good impression and condition, original fold lines
30.7x22.2cm. ¥6,000
- 79 HIROSHIGE: Nagata horse ground at Sanno Shrine, from *Toto meisho* (Famous places of the eastern capital), published by Kikakudo, c.1832--Good impression and condition, very slightly soiled, stained, and toned, some minute wormholes repaired
25.3x35.6cm. ¥80,000
- 80 HIROSHIGE: Higashi Honganji Temple, Asakusa, from *Edo meisho* (Famous Places of Edo), c.1848--Fair impression, good condition, very slightly soiled, faint centerfold
24.8x37cm. ¥60,000
- 81 HIROSHIGE: Sakanoshita, Tsuchiyama, Minakuchi, and Ishibe, from *Tokaido harimaze zue* (Cutout pictures of Tokaido), 1852--Good impression and condition, a minor stain in upper margin
37.6x24.8cm. ¥30,000
- 82 HIROSHIGE: View of Matsushima, with distant view of Mount Fuji, Mutsu Province, from *Rokujuyoshu meisho zue* (Pictures of famous places of the sixty-odd provinces), 1853--Good impression and condition, a few minute wormholes on top repaired, narrow margins
35.2x23.9cm. ¥120,000
- 83 HIROSHIGE: Gold mine, Sado Province, from the same series as above, 1853--Fine impression, good condition, binding holes repaired, lower margin narrow
36.2x25.6cm. ¥400,000
- 84 HIROSHIGE: Beach of Choshi, Shimosa Province, from the same series as above, 1853--Good impression and condition, very slightly soiled, a minute wormhole repair
36.4x24.5cm. ¥360,000
- 85 HIROSHIGE: Hara, from *Gojusan tsugi meisho zue* (Pictures of famous places of the fifty-three stations), (the 'Upright' Tokaido), 1855--Good impression and condition, very slightly stained, binding holes, margins narrow
35.2x24.1cm. ¥220,000
- 86 HIROSHIGE: Koume Embankment, from *Meisho Edo hyakkei* (One-hundred views of famous places of Edo), 1856--Good impression, fine condition
36.5x24.8cm. ¥400,000
- 87 HIROSHIGE II: Matsuchiyama, from *Edo meisho zue* (Pictures of famous places of Edo), 1862--Good impressions and condition, a few minute wormholes repaired
36x25.2cm. ¥45,000
- 88 HIROSHIGE II: *Meganebashi* (Eyeglass Bridge) of Nagasaki, Hizen Province, from *Shokoku meisho hyakkei* (One hundred views of famous places of Provinces), 1859--Good impression, fine condition except a few minor wormhole repairs in margin
36.7x25cm. ¥200,000
- 89 TOYOKUNI III: Hara, from *Tokaido*, (the 'procession' Tokaido), 1863--Good impression and condition, number inscription on top, slight backing residue on verso
36x24.3cm. ¥60,000
- 90 HIROSHIGE II: Yui, from the same series as above, 1863--Good impression and condition, slightly soiled, a minute wormhole on left edge repaired
35.5x23.8cm. ¥35,000
- 91 TSUYANAGA: Okehazama, from the same series as above, 1863--Good impression and condition, top margin narrow
34.3x25.1cm. ¥23,000
- 92 KUNISADA II: Kameyama, from the same series as above, 1863--Good impression and condition, very slightly soiled, top margin narrow
34.4x25.3cm. ¥25,000
- 93 SADAHIDE: *Saikai Yokohama fukei* (Revised view of Yokohama), six sheets, 1861--Good impressions and condition
37.5x25.5cm. each approx. ¥180,000
- 94 YOSHITORA: Balloon of America, triptych, 1867--Good impressions and condition, slightly soiled and worn, binding residue on verso
36.8x24.5cm. each approx. ¥80,000
- 95 YOSHIKAZU: American couple before a sewing machine, titled *Kita Amerika gasshukoku* (United States of North America), 1861--Good impression, fair condition, soiled, a few minor wormholes repaired with light backing
36.2x24cm. ¥30,000
- 96 KEISHOSAI: Cherry blossom at Yoshiwara--Good impression and condition, margins very slightly soiled, a few minute wormholes
25.2x35.7cm. ¥65,000
- 97 KIYOCHIKA: *Tokyo Ryogoku hyappongui akatsuki no zu* (Dawn and one-hundred piles at Ryogoku, Tokyo), from *Tokyo meisho* (Famous places of Tokyo), 1879--Good impression and condition, slightly soiled, centerfold
23.2x33cm. ¥80,000
- 98 KIYOCHIKA: *Shinagawa kaijo no chobo* (View of the sea of Shinagawa), from the same series as above, 1879--Good impression and condition, slightly stained
23.8x35.4cm. ¥150,000
- 99 KIYOCHIKA: Koromo River, below Tennoji, from the same series as above, 1880--Good impression and condition, faint centerfold
23x34cm. ¥280,000
- 100 KIYOCHIKA: *Ichigatsu chuin gozen kuji sha Satta no Fuji* (Mount Fuji seen from Satta Pass at 9a.m. in mid-January), c.1881--Good impression and condition
24.5x36.4cm. ¥950,000
- 101 KIYOCHIKA: *Sunshu mizuumi nichibotsu no Fuji* (Mount Fuji at sunset on a lake in Suruga Province), diptych, 1880--Good impressions and condition, left panel very slightly stained
35x23.5cm. each approx. ¥500,000
- 102 CHIKANOBU: Imperial carriage departing from Nijubashi, titled *Nijubashi yori Sakuradamon no kei* (View of Sakurada Gate seen from Nijubashi), triptych, c.1880--Good impressions and condition, very slightly soiled and stained, a few minute wormholes
36.8x24.7cm. each approx. ¥18,000
- 103 IKKEI: View of temporary imperial palace at Akasaka, triptych, 1885--Good impressions and condition, a few pinholes repaired
35.5x24cm. each approx. ¥20,000
- 104 GYOKUEI: Fan print of Mount Fuji seen over Tokyo Bay, c.1889--Good impression and condition
24x24.7cm. ¥7,000
- 105 NOBUKAZU: *Teikoku gikai shugiin no zu* (View of the House of Representatives), triptych, 1890--Good impressions and condition, very slightly soiled and stained
36.8x25cm. each approx. ¥35,000
- 106 TSUKIOKA KOGYO: 30th anniversary of after transfer of the capital, triptych, 1898--Good impressions and condition, very slightly soiled
37.5x25.2cm. each approx. ¥35,000
- 107 KUNIYOSHI: Guan-yu escapes Cao-cao through Five Passes, from *Tsuzoku Sangokushi* (Popular romance of the three kingdoms), triptych, 1853--Good impressions and condition, a few minute wormholes repaired
37.5x25.5cm. each approx. ¥550,000

- 108 KUNIYOSHI: Cao-Cao running away from Ma-Chao at the battle of Weihe River Bridge, from *Tsuzoku Sangokushi* (Popular romance of the three kingdoms), 1853--Good impressions and condition, very slightly soiled, a few minute wormholes repaired
37x25.4cm. each approx. ¥400,000
- 109 KUNIYOSHI: Zhang-Fei defending on the bridge at Changbanpo, titled *Sangokushi Chohanbashi no zu* (Scene of the battle of Changbanpo, from Romance of three kingdoms), triptych, 1852--Good impressions, fine condition except very slight ink soiling
37.5x26cm. each approx. ¥580,000
- 110 KUNIYOSHI: Wang Pou, from *Nijushiko doji kagami* (Mirror of children in twenty-four filial pieties, c.1844--Good impression and condition, very slightly soiled and toned, minor corner tears repaired
25.3x35.5cm. ¥120,000
- 111 YOSHITORA: Battle of Shirakawaden, triptych, c.1830--Good impressions, fair condition, worn, slightly soiled and stained, a few minute wormholes
37.7x25.5cm. each approx. ¥35,000
- 112 YOSHIKANE: Battle at Awazuhara, triptych, c.1848--Good impressions and condition, a minute wormhole and slight damage along edges repaired
36.8x25.3cm. each approx. ¥120,000
- 113 KUNIYOSHI: A scene of the night attack from the *Soga monogatari* (Tale of Soga Brothers), six sheets, c.1844--Good impressions and condition, a few minute wormholes repaired
37.2x25.5cm. each approx. ¥350,000
- 114 HIROSHIGE: Battle of Kawanakajima, triptych, c.1844--Good impressions and condition
38x25.5cm. each approx. ¥200,000
- 115 YOSHITORA: Okuda Magodayu Fujiwara Shigemori, from *Chushin gishi meimei den* (Stories of loyal retainers), 1864--Good impression and condition, very slightly soiled, a pinhole worming
25x18.5cm. ¥15,000
- 116 YOSHITORA: Mase Chudayu Kino Masaaki, from the same series as above, 1864--Good impression and condition, very slightly soiled and stained
25.2x18.5cm. ¥15,000
- 117 YOSHITORA: Wakagaki Genzo Fujiwara Masakata, from the same series as above, 1864--Good impression and condition, very slightly soiled and stained
25x18.5cm. ¥15,000
- 118 YOSHITORA: Oribe Yahei Minamoto Kanamaru, from the same series as above, 1864--Good impression and condition, very slightly soiled, a few minute wormholes
25x18.5cm. ¥15,000
- 119 YOSHITORA: Hayano Wasuke Fujiwara Tsunenari, from the same series as above, 1864--Good impression and condition, very slightly soiled
25.1x18.5cm. ¥15,000
- 120 YOSHIKU: Tsuzuki Denshichi, from *Eimei nijuhasshuku* (Twenty-eight forms of murders with verse), 1866--Good impression and condition, very slightly soiled
37.3x24.8cm. ¥70,000
- 121 YOSHITOSHI: *Karine no kinuginu* (Parting in a morning at the temporary pleasure quarters), triptych, 1860--Good impressions and condition, very slightly soiled, slightly trimmed, a minute wormhole on center panel, a small tear on right edge on right panel repaired
35.5x24cm. each approx. ¥120,000
- 122 YOSHITOSHI: Ban Dan'emon, from *Kaidai hyakusen so* (Selection of one hundred warriors), 1868--Good impression and condition, very slightly stained and toned, slightly trimmed
35.5x24.7cm. ¥85,000
- 123 YOSHITOSHI: Kimura Shigenari, from the same series as above, 1868--Good impression and condition, binding residue along left edge, slightly trimmed
35.3x24.5cm. ¥80,000
- 124 YOSHITOSHI: Suzuki Hidanokami Shigeyuki, from the same series as above, 1868--Good impression and condition, slightly stained and damaged near bottom, binding holes, lightly backed
37.5x25.5cm. ¥45,000
- 125 YOSHITOSHI: Shigeno Saemonnosuke Yukimura, from the same series as above, 1868--Good impression, fair condition, slightly soiled and worn, backing residue, trimmed
35x23.8cm. ¥40,000
- 126 YOSHITOSHI: *Honcho gito kurabe* (Comparison of righteous bandits of Japan), triptych, 1865--Good impressions and condition
37.4x25.5cm. each approx. ¥80,000
- 127 YOSHITOSHI: Hiyoshimaru (young Hideyoshi) meets Hachisuka Koroku, from *Hoshin shoshinroku* (Success of Toyotomi Hideyoshi), triptych, c.1868--Good impressions and condition, margins very slightly soiled and stained, a pinhole worming on left panel
37x25cm. each approx. ¥50,000
- 128 YOSHITOSHI: *Kinsei kisetsu nempyo* (Chronology of strange events in modern times), three sheets, 1874--Good impressions and condition, slightly soiled and worn, one sheet tear on left repaired with light backing, one sheet left margin trimmed to border and lightly backed
35.5x24.5cm. each ¥100,000
- 129 YOSHITOSHI: Priest Gessho, from *Meiyo Shindan* (New honorable stories), 1874--Good impression and condition, paper thinned, some minor damage repaired, margins trimmed
35.4x23.2cm. ¥15,000
- 130 YOSHITOSHI: Portrait of the actor Sawamura Toshō in the role of Beniomaru, subtitled *Hanagumori* (Hazy sky in spring), from *Seiu Kandankei* (Barometer of emotions), 1876--Good impression and condition, very slightly creased near left edge, slightly trimmed, lightly backed
36x23.9cm. ¥45,000
- 131 YOSHITOSHI: View of Ryogoku Bridge, Tokyo, c.1875--Good impressions and condition, very slightly soiled, stained, and worn
37.4x24.9cm. each approx. ¥80,000
- 132 YOSHITOSHI: Uncut sheet from *Tokyo kaika kyoga meisho* (Comic pictures of famous places of civilized Tokyo), illustrating Shiba Shimmei Shrine and Asakusa Sensoji Temple, 1881--Good impression and condition
36.5x24cm. ¥25,000
- 133 YOSHITOSHI: Uncut sheet from the same series as above, illustrating Fox at Mimeguri Shrine, Horse racing at Yasukuni Shrine, 1881--Good impression and condition
37.1x24.5cm. ¥25,000
- 134 YOSHITOSHI: Minamoto no Tameyoshi, from *Dai Nihon meisho kagami* (Mirror of heroes of great Japan), 1880--Good impression and condition, lower margin narrow, backing residue
34.5x23cm. ¥45,000
- 135 YOSHITOSHI: Taira no Masakado, from the same series as above, 1879--Good impression and condition, lower margin narrow
34.5x23.1cm. ¥35,000
- 136 YOSHITOSHI: Minamoto no Yoshitsune and Priest Benkei, from the same series as above, 1878--Good impression and condition, slightly soiled and stained, some tears repaired
37.1x25.6cm. ¥20,000
- 137 YOSHITOSHI: Taira no Shigemori, from the same series as above, 1878--Good impression and condition, slightly soiled, very slightly stained
35.5x23.8cm. ¥20,000
- 138 YOSHITOSHI: Umayado no Oji, from the same series as above, 1879--Good impression and condition, very slightly soiled, a pinhole worming
34.5x22.9cm. ¥35,000
- 139 YOSHITOSHI: Mount Otowa moon, Bright God Tamura, Toyohara Sumaki, from *Tsuki hyakushi* (One hundred aspects of the moon), 1886--Good impression and condition, very slightly soiled and toned
37x25cm. ¥35,000

- 140 YOSHITOSHI: Toyotomi Hidetsugu, from the same series as above, 1889—Good impression and condition, very slightly soiled and toned, backing residue
35.9x23.7cm. ¥50,000
- 141 YOSHITOSHI: *Gekkyu no mukae, Taketori* (Received back into moon palace, Bamboo cutter), from the same series as above, 1888—Good impression and condition, very slightly stained, narrow margins
35.3x23.4cm. ¥60,000
- 142 YOSHITOSHI: *Adachigahara hitotsuya no zu* (A solitary house of Adachigahara), vertical diptych, 1885—Good impressions and condition, slightly soiled and worn, trace of backing, trimmed
36x24.2cm. each approx. ¥1,200,000
- 143 YOSHITOSHI: Drunken Lu Chi-sen breaking the statue of Kongo in Mount Godai, vertical diptych, 1887—Good impressions and condition, trimmed, backed
36x24.3cm. each approx. ¥700,000
- 144 YOSHITOSHI: Hakoomaru, from *Kokoku nijushiko* (Twenty-four heroes of imperial Japan), 1881—Good impression and condition, stained, narrow margins, lightly backed
34.5x23.5cm. ¥25,000
- 145 YOSHITOSHI: Hashiba (Toyotomi) Hideyoshi, from the same series as above, 1887—Good impression and condition, very slightly soiled
36.8x24.8cm. ¥50,000
- 146 YOSHITOSHI: Courtesan Miyagino and her sister Shinobu, from the same series as above, 1881—Good impression and condition, very slightly soiled, some margins narrow
35.4x23.8cm. ¥40,000
- 147 YOSHITOSHI: Kato Kiyomasa, from the same series as above, 1893—Good impression and condition, slightly soiled, fold lines, backing residue
37x24.6cm. ¥30,000
- 148 YOSHITOSHI: Torii Suneemon, from the same series as above, 1881—Good impression and condition, slightly soiled
36.8x25cm. ¥40,000
- 149 YOSHITOSHI: Minamoto no Yorimasa, from *Yoshitoshi mushaburui* (Yoshitoshi's courageous warriors), 1886—Good impression and condition, margins very slightly soiled
36.8x24.8cm. ¥65,000
- 150 YOSHITOSHI: Taira no Tomomori, from the same series as above, 1885—Good impression, fair condition, slightly soiled, stained, and worn, some margins narrow
35.5x23.2cm. ¥35,000
- 151 YOSHITOSHI: Kato Kiyomasa, from the same series as above, c.1883—Good impression and condition, very slightly soiled, narrow margins, backed
35.5x24cm. ¥40,000
- 152 YOSHITOSHI: Soga Goro and Tosho Goromaru, from the same series as above, c.1883—Good impression and condition, margins very slightly soiled
36.6x24.8cm. ¥60,000
- 153 YOSHITOSHI: Endo Morito, from the same series as above, 1883—Good impression and condition, very slightly soiled, light backing with ink inscriptions, right and bottom margin trimmed
35x23.5cm. ¥35,000
- 154 YOSHITOSHI: Hojo Tokiyori, from the same series as above, 1883—Good impression and condition, very slightly soiled and toned, light backing with ink inscriptions, right and bottom margin trimmed
35.5x23.4cm. ¥35,000
- 155 YOSHITOSHI: *Nomitaso* (Looking as if she wants to drink), from *Fuzoku sanjuniso* (Thirty-two aspect of customs and manners), 1888—Good impression, fair condition, slightly soiled, stained, and trimmed, slight damage along edges
35.2x23.5cm. ¥50,000
- 156 YOSHITOSHI: *Jirettaso* (Looking as if somebody is about to arrive), from the same series as above, 1888—Good impression and condition, very slightly soiled and stained, slightly trimmed, lightly backed
35.3x23.5cm. ¥70,000
- 157 YOSHITOSHI: *Sagi musume* (Heron maiden), from *Shinkei sanjurokkaisen* (The new forms of the thirty-six ghosts), 1889—Good impression and condition
37x25.4cm. ¥250,000
- 158 YOSHITOSHI: The old female demon retrieving her arm, from the same series as above, 1889—Good impression and condition, very slightly soiled, a few tiny stains
36.5x25cm. ¥200,000
- 159 YOSHITOSHI: Fujiwara no Hidesato shooting the centipede at the Dragon King's palace, from the same series as above, 1890—Good impression and condition
36.8x25cm. ¥150,000
- 160 YOSHITOSHI: The Peony lantern, from the same series as above, 1891—Good impression and condition
37x25.3cm. ¥180,000
- 161 YOSHITOSHI: The enlightenment of Jigoku Dayu (Hell courtesan), from the same series as above, 1890—Good impression and condition, margins very slightly soiled
37x25.2cm. ¥200,000
- 162 YOSHITOSHI: Kobayamawa Takakage debating with the Tengu of Mount Hiko, from the same series as above, 1892—Good impression and condition, a minute stain on lower right, narrow margins
36.1x23.5cm. ¥180,000
- 163 YOSHITOSHI: Kobayamawa Takakage debating with the Tengu of Mount Hiko, from the same series as above, 1892—Good impression and condition, narrow margins
35.4x23.9cm. ¥120,000
- 164 YOSHITOSHI: Fujiwara no Sanekata's obsession with the sparrows, from the same series as above, 1890—Good impression and condition, very slightly soiled, centerfold
37.2x25cm. ¥120,000
- 165 YOSHITOSHI: Nitta Tadatsune seeing an apparition in a cave, from the same series as above, 1890—Good impression and condition, narrow margins, backed
35.6x23.7cm. ¥100,000
- 166 YOSHITOSHI: *Nasunohara sesshoseki no zu* (The death stone of Nasu moor), from the same series as above, 1902—Good impression and condition, narrow margins
35.4x23.9cm. ¥100,000
- 167 YOSHITOSHI: Ghost of Taira no Tomomori emerges on the sea, from the same series as above, 1892—Good impression and condition, very slightly soiled and stained, narrow margins
35.1x23.5cm. ¥80,000
- 168 YOSHITOSHI: Titled with a poem by Ariwara no Narihira, from the same series as above, 1890—Good impression and condition, very slightly soiled, slightly stained and worn, a few minute tears
36.5x24.5cm. ¥80,000
- 169 YOSHITOSHI: Satire picture of Boshin War, triptych, 1868—Good impressions, fair condition, slightly soiled, worn, a few minute wormholes
35.5x25cm. each approx. ¥45,000
- 170 YOSHITOSHI: Scene of the Satsuma Rebellion, triptych, 1877—Good impressions and condition, very slightly stained
37x25cm. each approx. ¥28,000
- 171 YOSHITOSHI: Comic news of the Satsuma Rebellion, 1877—Good impression, fine condition
37x25cm. ¥25,000
- 172 YOSHITOSHI: Scene of the Satsuma Rebellion, triptych, 1877—Good impressions and condition, very slight damage along edges, lightly backed
35.5x23.96cm. each approx. ¥25,000
- 173 YOSHITOSHI: A policeman, from *Kagoshima meian roku* (Light and shadow of Satsuma Rebellion), 1878—Good impression and condition, slightly stained
36.5x25cm. ¥18,000
- 174 YOSHITOSHI: *Seisei heion ki* (Peace after the Satsuma Rebellion), triptych, 1878—Good impressions and condition, creased, backed
35x24.5cm. each approx. ¥20,000

- 175 **CHIKANOBU**: Scene of the Satsuma Rebellion, triptych, 1877--Good impressions and condition, a minute stain on left panel
37x25cm. each approx. ¥28,000
- 176 **CHIKANOBU**: Scene of the Satsuma Rebellion, triptych, 1877--Good impressions and condition
36.9x25cm. each approx. ¥28,000
- 177 **MOSAI**: Scene of the Satsuma Rebellion, triptych, 1877--Good impressions and condition, very slightly worn along edges
37x25.4cm. each approx. ¥20,000
- 178 **YOSHITSUYA II**: Officers of the imperial army receiving rewards from the emperor, triptych, 1877--Good impressions and condition, very slightly soiled, a minute stain on right panel
37.3x25.4cm. each approx. ¥15,000
- 179 **YOSHIMUNE**: *Gishin no nata* (Hatchet of Righteousness), from *Sensetsu rokuroku dan* (Thirty-six selected tales of snow), 1892--Good impression and condition, very slightly soiled, slightly toned, a minute stain
37.2x25.1cm. ¥18,000
- 180 **YOSHIMUNE**: *Myoho no kizui* (Miracle of Saddharma), from the same series as above, 1892--Good impression and condition, slightly soiled and stained, and toned
37.2x25.1cm. ¥18,000
- 181 **YOSHIMUNE**: *Sano no yugure* (Dusk at Sano), from the same series as above, 1892--Good impression and condition, very slightly soiled, slightly toned
37.1x25cm. ¥20,000
- 182 **YOSHIMUNE**: Takeda Katsuyori at Mount Temmoku, from the same series as above, 1893--Good impression and condition, very slightly soiled, stained, slightly toned
36.8x25cm. ¥18,000
- 183 **TOSHIAKI**: Minamoto no Yoshiie, triptych, 1897--Good impressions and condition, slightly soiled, very slightly stained, fold on lower left corner of right panel
37.5x25.3cm. each approx. ¥18,000
- 184 **ROSETSU**: Bout between Taira no Shigemori and Minamoto no Yoshihira, triptych, 1897--Good impressions and condition, very slightly soiled, a spot stain on center panel
36.9x25cm. each approx. ¥120,000
- 185 **CHIKANOBU**: Minamoto Yoshitsune and troops admiring cherry blossom at Suma Temple, triptych, Meiji Period--Good impressions, fine condition
36.6x24.8cm. each approx. ¥55,000
- 186 **CHIKANOBU**: Minamoto no Yoshitsune looking into the cliff of Hiyoudorigoe, triptych, 1893--Good impressions and condition
36.9x25cm. each approx. ¥140,000
- 187 **ROSETSU**: Battle of Kawanajima, triptych, 1897--Good impressions and condition, a few spot stains
35.5x25.2cm. each approx. ¥130,000
- 188 **KOKUNIMASA**: Toyotomi Hideyoshi appears with Samboshi, at the funeral of Oda Nobunaga, triptych, 1896--Good impressions and condition, very slightly soiled
37.8x25.8cm. each approx. ¥40,000
- 189 **CHIKANOBU**: Kato Toranosuke (Kiyomasa) and Yamaji Shogen (Masakuni) at the battle of Shizugatake, triptych, c.1897--Good impressions and condition, a tear on left panel repaired
37.8x26cm. each approx. ¥120,000
- 190 **TOYONOBU**: *Shinsen Taikoki* (Newly selected history of Toyotomi Hideyoshi), diptych, 1883--Good impressions, fine condition
37.5x25cm. each approx. ¥20,000
- 191 **TOYONOBU**: From the same series as above, diptych, 1883--Good impressions and condition, very slightly soiled
36.5x24.8cm. each approx. ¥15,000
- 192 **TOYOKUNI**: A scene of a kabuki performance, vertical triptych, 1811--Good impressions, fair condition, faded, soiled, and worn, some minor wormholes repaired, centerfold
36.9x24.6cm. each approx. ¥85,000
- 193 **TOYOKUNI**: Portrait of the actor Onoe Matsusuke in the role of Oboshi Yuranosuke in the kabuki performance *Kanadehon Chushingura*, from *Yakusha butai no sugata-e* (Portraits of actors on the stage), subtitled *Otowaya*, c.1794--Good impression, fair condition, slightly faded, soiled, stained, and toned, slight damage repaired
38.7x24.7cm. ¥270,000
- 194 **TOYOKUNI**: Portrait of the actor Ichikawa Danjuro in the role of Kagekiyo and Water vendor, 1811--Good impression and condition, slightly soiled and trimmed, binding holes
37.1x25.5cm. ¥200,000
- 195 **KUNIYASU**: Portrait of five actors as five braveries, five sheets, c.1818--Good impressions and condition, slightly soiled and worn, fold lines, some side edges cut and joined to next sheet
38.5x25.5cm. each approx. ¥100,000
- 196 **KUNISADA**: Portrait of the actor Sawamura Tosho in the role of the spirit of Komachi cherry tree, 1840--Good impression and condition, slightly soiled, stained, and damaged
37x25.8cm. ¥12,000
- 197 **HIROSHIGE**: *Joruricho hanka no zu* (Prosperity of Joruri street), 1852--Good impression and condition, slightly worn
37.1x25.5cm. ¥120,000
- 198 **TOYOKUNI III**: Scene of a kabuki performance, c.1848--Good impression and condition, a minute wormhole on left, lightly backed
25x36.1cm. ¥13,000
- 199 **TOYOKUNI III**: Scene of a kabuki performance, triptych, 1851--Good impressions and condition, left panel slightly creased, backing residue
36x24.8cm. each approx. ¥12,000
- 200 **TOYOKUNI III**: Scene of the kabuki performance *Irifune Soga Nihon no torikaji*, actor Ichikawa Ichizo in the role of Yako Takohei, Nakamura Fukuoka in the role of Asahina, and Ichikawa Danzo in the role of Kudo Suketsune, triptych, 1857--Good impressions and condition, very slight stain on lower right panel
35.8x24.4cm. each approx. ¥120,000
- 201 **TOYOKUNI III**: Scene of a kabuki performance, triptych, 1858--Good impressions and condition, very slightly soiled and stained, some minute wormholes repaired, lightly backed
37x25.5cm. each approx. ¥18,000
- 202 **TOYOKUNI III**: Scene of a kabuki performance, triptych, 1861--Good impressions and condition
35.3x25cm. each approx. ¥18,000
- 203 **TOYOKUNI III**: Portrait of the actor Kwarazaki Gonjuro in the role of Sageo no Inosuke, from *Kinsei Suikoden* (Modern Suikoden), 1862--Good impression and condition, very slightly soiled, slightly trimmed
34.9x24cm. ¥26,000
- 204 **TOYOKUNI III**: Portrait of the actor Bando Mitsugoro in the role of Kogakure no Kiritaro, from the same series as above, 1861--Good impression and condition, very slightly soiled, slightly trimmed
34.8x24.1cm. ¥26,000
- 205 **TOYOKUNI III**: Portrait of the actor Ichikawa Kyuzo in the role of Rakan no Takezo, from the same series as above, 1861--Good impression and condition, very slightly soiled and stained, slightly trimmed, a few minute wormholes
36x24.4cm. ¥25,000
- 206 **TOYOKUNI III**: Portrait of the actor Sawamura Tanosuke in the role of Tokumyobune Mankichi, from the same series as above, 1861--Good impression and condition, very slightly soiled, slightly trimmed
34.7x24cm. ¥26,000
- 207 **TOYOKUNI III**: Portrait of the actor Onoe Baiko in the role of Namikiri Juza, from the same series as above, 1862--Good impression and condition, very slightly soiled, slightly trimmed, a minor wormhole on lower left repaired
34.7x24cm. ¥28,000
- 208 **TOYOKUNI III**: Portrait of the actor Ichikawa Ichizo in the role of Nadare no Iwamatsu, from the same series as above, 1862--Good impression and condition, very slightly soiled, slightly trimmed
34.8x24cm. ¥28,000

- 209 TOYOKUNI III: Portrait of the actor Sawamura Toshō in the role of Ioka no Sutegoro, from the same series as above, 1862--Good impression and condition, slightly soiled, slightly trimmed
35.5x25.2cm. ¥25,000
- 210 TOYOKUNI III: Portrait of the actor Bando Hikosaburo in the role of Kirishima Tatsugoro, from the same series as above, 1862--Good impression and condition, very slightly soiled, a few minor wormholes, slightly trimmed, binding holes
35.5x24cm. ¥25,000
- 211 TOYOKUNI III: Portrait of the actor Nakamura Tsuruzō in the role of Kagurabayashi Raihachi, from the same series as above, 1862--Good impression and condition, very slightly soiled, slightly trimmed
34.8x24cm. ¥23,000
- 212 TOYOKUNI III: Portrait of the actor Iwai Kumesaburo in the role of Kani no Ataku, from the same series as above, 1861--Good impression and condition, very slightly soiled and stained, slightly worn, slightly trimmed, binding holes
36.8x24.5cm. ¥26,000
- 213 TOYOKUNI III: Portrait of the actor Sawamura Tanosuke in the role of Namikata Mon'ya, from the same series as above, 1861--Good impression and condition, very slightly soiled, slightly trimmed
34.8x24.1cm. ¥28,000
- 214 YOSHIIKU: Scene of a kabuki performance, triptych, 1862--Good impressions and condition, very slightly worn
38x26cm. each approx. ¥25,000
- 215 KUNICHIKA: Actors' parody of *Shōgi*, triptych, 1865--Good impressions and condition, a minor stain on center panel
38x25.5cm. each approx. ¥85,000
- 216 KUNIMASA IV: Interior of Chitose Theater, flip reveals scenes of performances, 1886--Good impression and condition, very slightly stained and worn, ink inscription in upper margin
23.3x34.8cm. ¥80,000
- 217 KUNIMASA IV: Interior of Shintomi Theater at the opening after rebuilt, triptych, flip on center panel reveals scenes of the performances, triptych, 1878--Good impressions and condition, very slightly soiled, slight stain on right panel
36.8x25.2cm. each approx. ¥100,000
- 218 KUNIMASA IV: Interior of the Morita Theater, triptych, 1872--Good impressions, fine condition
37x25.5cm. each approx. ¥70,000
- 219 KUNICHIKA / KYOSAI: Portrait of the actor Onoe Kikugoro in the role of Kojima Saburo, 1882--Good impression and condition, very slightly soiled and stained, a wormhole and tear repaired
37.5x25cm. ¥18,000
- 220 YOSHITORA: Scenes of *Kanadehon Chūshingura*, twelve sheets, complete, Meiji Period--Good impressions and condition, slightly soiled and worn, lightly backed
24.5x36cm. each approx. ¥60,000
- 221 KUNICHIKA: Scene of a kabuki performance, triptych, 1875--Good impressions and condition, very slightly soiled, center and right panel with minor tear on right edge
36.3x25cm. each approx. ¥10,000
- 222 CHIKANOBU: Scene of a kabuki performance, triptych, 1881--Good impressions, fine condition
37x24.8cm. each approx. ¥13,000
- 223 CHIKASHIGE: Scene of a kabuki performance, triptych, 1881--Good impressions, fine condition except a minute hole on center panel
36.8x24.9cm. each approx. ¥12,000
- 224 CHIKASHIGE: Scene of a kabuki performance, triptych, 1881--Good impressions, fine condition
36.2x24.8cm. each approx. ¥10,000
- 225 CHIKASHIGE: Scene of a kabuki performance, triptych, 1881--Good impressions, fine condition
37x25cm. each approx. ¥10,000
- 226 KUNICHIKA: Scene of a kabuki performance, triptych, 1884--Good impressions, fine condition except a slight oxidation crack on center panel
37.3x24.4cm. each approx. ¥15,000
- 227 KUNICHIKA: Scene of a kabuki performance, triptych, 1886--Good impressions and condition
37.3x25.2cm. each approx. ¥13,000
- 228 KUNICHIKA: Scene of a kabuki performance, triptych, 1893--Good impressions and condition, slightly stained and toned
36.5x25.5cm. each approx. ¥25,000
- 229 KOCHORO: Scene of a kabuki performance, triptych, 1894--Good impressions, fine condition
37.5x25cm. each approx. ¥25,000
- 230 KUNICHIKA: Scene of a kabuki performance, triptych, 1897--Fine impressions and condition except very slight stain on center panel
36.5x25cm. each approx. ¥45,000
- 231 KOCHORO: Scene of a kabuki performance, triptych, 1897--Good impressions, fine condition
37.5x25cm. each approx. ¥35,000
- 232 KOCHORO: Scene of a kabuki performance, triptych, 1897--Good impressions, fine condition except very slight offset stain on center panel
37x25cm. each approx. ¥33,000
- 233 BAIDO: Scene of a kabuki performance, triptych, 1897--Good impressions and condition, very slightly soiled and stained
37.4x25.4cm. each approx. ¥25,000
- 234 BAIDO: Scene of a kabuki performance, triptych, 1897--Fine impressions and condition except very slight stain on right panel
36.8x24.5cm. each approx. ¥20,000
- 235 UNSIGNED: Memorial portrait of the actor Bando Shuka, 1855--Good impression and condition, slightly soiled
34.9x24cm. ¥13,000
- 236 TOSHIIHIDE: Memorial portrait of the actor Ichikawa Danjuro IX, 1903--Good impression and condition, very slightly stained
37.5x25.5cm. ¥25,000
- 237 TANKEI: Military parade at Aoyama ground, triptych, 1889--Good impressions and condition, very slightly soiled, very slight stain along right edge of left panel
37x25.2cm. each approx. ¥22,000
- 238 NOBUKAZU: Emperor observing military exercise at Utsunomiya, triptych, 1892--Good impressions, fine condition
37.5x24.8cm. each approx. ¥20,000
- 239 TOSHIKATA: Sino-Japanese War, triptych, 1894--Good impressions and condition, very slightly soiled
37x24.8cm. each approx. ¥18,000
- 240 GINKO: A scene of Shino-Japanese War, triptych, 1894--Good impressions and condition, very slightly soiled, left panel very slightly stained, centerfold
37x25cm. each approx. ¥18,000
- 241 UNSIGNED: Sino-Japanese War, scouts watching enemy position in Taipei, triptych, 1894--Good impressions, fine condition
37x24.8cm. each approx. ¥38,000
- 242 GEKKO: Sino-Japanese War, triptych, 1894--Good impressions and condition, very slightly soiled, slightly stained and damaged along edges
36.7x25.2cm. each approx. ¥16,000
- 243 TOSHIKATA: Sino-Japanese War, snowflakes detailed with gofun, triptych, 1895--Good impressions and condition, very slightly toned
37x25cm. each approx. ¥25,000
- 244 EIICHI: Sino-Japanese War, triptych, 1895--Good impressions and condition, slightly toned
36.8x25.5cm. each approx. ¥18,000
- 245 KOKUNIMASA: Sino-Japanese War, triptych, c.1895--Good impressions and condition, very slight ink smudge
37x24.8cm. each approx. ¥22,000
- 246 TOSHIKATA: Sino-Japanese War, snowflakes detailed with gofun, triptych, 1895--Good impressions and condition, very slightly stained
37.5x24.7cm. each approx. ¥23,000

- 247 TOSHIKI: Sino-Japanese War, triptych, 1895--Good impressions and condition, very slightly soiled and toned, slightly stained, a minor tear on left panel repaired, centerfold
37x25cm. each approx. ¥18,000
- 248 KOKUNIMASA: Sino-Japanese War, triptych, c.1895--Good impressions and condition, very slightly stained
37x24.7cm. each approx. ¥18,000
- 249 KIYOCHIKA: Sino-Japanese War, triptych, 1895--Good impressions, fine condition
37x24.8cm. each approx. ¥30,000
- 250 KIYOCHIKA: Army General Komatsunomiya, from *Rikukai gunjin komei kagami* (Mirror of famous officers of army and navy), 1896--Good impression and condition, slightly soiled and stained, backing residue
36x24.4cm. ¥20,000
- 251 KIYOCHIKA: Army General Nozu, from the same series as above, 1896--Good impression and condition, slightly soiled and stained, backing residue
36.5x25.5cm. ¥20,000
- 252 KIYOCHIKA: Table of contents, from the same series as above, 1896--Good impression and condition, soiled and stained, backing residue
35.8x24.8cm. ¥15,000
- 253 BEISAKU: Engineer Onoguchi Tokuji, from *Nisshin senso chuyu bikan* (Mirror of loyal and brave soldiers of Sino-Japanese War), 1895--Good impression and condition, faint centerfold
37.6x25cm. ¥25,000
- 254 BEISAKU: Army Captain Matsuzaki Naomi, from the same series as above, 1895--Good impression and condition
37.6x25cm. ¥25,000
- 255 BIHO: Japan-Russo War, triptych, 1904--Fine impressions and condition
37.2x25.4cm. each approx. ¥45,000
- 256 RYUA: Japan-Russo War, triptych, 1904--Good impressions and condition, very slightly soiled, right panel slightly toned
37x24.3cm. each approx. ¥35,000
- 257 RYUA: Japan-Russo War, triptych, 1904--Good impressions and condition, very slightly soiled
37.5x25.3cm. each approx. ¥48,000
- 258 TOSHIHIDE: Japan-Russo War, triptych, 1904--Good impressions and condition, slightly stained, fold lines
37.5x25cm. each approx. ¥18,000
- 259 KONEN: Japan-Russo War, triptych, 1904--Fine impressions and condition
37x25.5cm. each approx. ¥45,000
- 260 TOYONARI: Bust portrait of the actor Morita Kan'ya, in the role of Jean Valjean, first state with blue details on the hand, 1921--Fine impression and condition
41.5x28.5cm. ¥330,000
- 261 YOSHIDA HIROSHI: *Kameido / Kameido Bridge*, from *Tokyo junidai* (Twelve subjects of Tokyo), signed in pencil and in brush, with *jizuri* seal, 1927--Fine impression and condition
40x26.8cm. ¥380,000
- 262 YOSHIDA HIROSHI: Arashiyama, from *Sakura hachidai* (Eight scenes of cherry blossom), signed in pencil and in brush, with *jizuri* seal, 1935--Fine impression and condition, tape residue on verso
40.4x27cm. ¥380,000
- 263 YOSHIDA HIROSHI: Ueno Park, signed in pencil and in ink, *jizuri* seal, 1937--Fine impression and condition
39.6x27.2cm. ¥380,000
- 264 YOSHIDA HIROSHI: *Yomei mon / Yomei Gate* (Nikko), signed in pencil and in ink, *jizuri* seal, 1937--Fine impression and condition
39.8x27.2cm. ¥380,000
- 265 YOSHIDA HIROSHI: *Obatan aumu* (Obatan Parrot (Salmon-crested cockatoo), signed in brush, 1926--Good impression, fine condition
42.5x27.4cm. ¥90,000
- 266 OHNO BAKUFU: Goby, c.1935--Good impression and condition, top corners very slightly stained
27.9x39.5cm. ¥45,000
- 267 KAWASE HASUI: Zaimoku Island, Matsushima, 1933--Fine impression and condition
38.6x26cm. ¥750,000
- 268 KAWASE HASUI: *Tsutanuma no asa* (Morning at Tsuta Pond), 1933--Fine impression and condition
38.8x26.3cm. ¥850,000
- 269 KAWASE HASUI: Setakamui Rock, Shiribeshi, 1934--Fine impression and condition
38.6x26cm. ¥750,000
- 270 KAWASE HASUI: Onuma Park, Hokkaido, 1934--Fine impression and condition
38.7x26cm. ¥750,000
- 271 KAWASE HASUI: *Soshu, Maekawa no ame* (Rain at Maekawa, Sagami Province), from *Tokaido fukei senshu* (Selection of views of the Tokaido), no publisher's seal, 1932--Good impression, fine condition
38.7x26cm. ¥150,000
- 272 KAWASE HASUI: Rain at Yasuniwa, Nagano Prefecture, no publisher's seal, 1946--Good impression and condition
26x35.7cm. ¥200,000
- 273 KAWASE HASUI: *Daichi no yuki* (Snow at Daichi), published by Isetatsu, 1925, posthumous edition--Good impression and condition
38.7x27.3cm. ¥90,000
- 274 KAWASE HASUI: *Shiobara no yugure* (Dusk at Ushibori), published by Sakai/Kawaguchi, 1930, posthumous edition--Good impression, fine condition
42.9x31.3cm. ¥90,000
- 275 KAWASE HASUI: Nikko Pass, 1930, posthumous edition--Good impression, fine condition
39x26.1cm. ¥90,000
- 276 KAWASE HASUI: *Shuzenji no ame* (Rain in Shuzenji), 1933, posthumous edition--Good impression, fine condition
39.4x26.4cm. ¥100,000
- 277 KAWASE HASUI: Kasuga Shrine, Nara, 1933, posthumous edition--Good impression, fine condition
39.5x26.6cm. ¥90,000
- 278 KAWASE HASUI: *Otaru no hatoba* (A pier at Otaru), 1933, posthumous edition--Good impression, fine condition
39x26.4cm. ¥90,000
- 279 KAWASE HASUI: *Osaka Soemoncho no yu* (Evening at Soemoncho, Osaka), 1933, posthumous edition--Good impression, fine condition
39x26.5cm. ¥90,000
- 280 KAWASE HASUI: *Nezu gongen no yuki* (Snow at Nezu Shrine), 1933, posthumous edition--Good impression, fine condition
39.2x26cm. ¥100,000
- 281 KAWASE HASUI: Uto Turret, Kumamoto Castle, 1948, posthumous edition--Good impression, fine condition
39.5x26.3cm. ¥95,000
- 282 KAWASE HASUI: Sanzen'in Temple, Ohara, Kyoto, 1949, posthumous edition--Good impression, fine condition
39.5x26.5cm. ¥85,000
- 283 KAWASE HASUI: *Saruiwa* (Monkey rock), Shiobara, 1949, posthumous edition--Good impression, fine condition
39x26.5cm. ¥95,000
- 284 KAWASE HASUI: *Shiobara no aki* (Autumn in Shiobara), 1950, posthumous edition--Good impression, fine condition
39x26cm. ¥95,000
- 285 KAWASE HASUI: *Kiyomizudera no bosetsu* (Evening snow at Kiyomizu Temple), 1950, posthumous edition--Good impression, fine condition
39.3x26.1cm. ¥95,000
- 286 KAWASE HASUI: Night at Hase Temple, Nara, 1950, posthumous edition--Good impression, fine condition
38x26.4cm. ¥100,000
- 287 KAWASE HASUI: Senju Waterfall, Akame, 1951, posthumous edition--Good impression, fine condition
39.5x26.5cm. ¥95,000
- 288 KAWASE HASUI: *Ginkakuji no yuki* (Snow at Ginkakuji Temple), 1951, posthumous edition--Good impression, fine condition
39.8x26cm. ¥95,000

通信販売のご案内

掲載品は特記なき限り真作であることを保障いたします。ご希望により詳細な状態をお知らせいたします。

日本国内への発送費用は書籍、複製版画類を除き無料です。海外への発送は実費を頂戴いたします。

品物のお引渡しは原則として全額支払後となります。

万一、購入された作品がお気に召さなかった場合の返品はご自由です。作品が原状にて7日以内に返送されることを原則といたします。

国内からのご送金は郵便振替、銀行振込、現金書留のいずれでも結構です。海外からの場合は国際郵便為替、または日本円での銀行送金でお願いいたします。送金手数料はお客様負担となります。又、主要クレジットカードでのお支払もお受けしております。その他のお支払方法につきましてはお問い合わせください。

商品の表示価格は消費税を含みます。

CONDITIONS OF SALE

All lots, unless noted, are guaranteed genuine. Condition reports are available upon request.

Shipping can be arranged within Japan without charge (except books and reproductions). Shipping to overseas is extra.

Purchase will not be transferred until payment in full has been received.

Purchase can be returned in case of dissatisfaction. Refund to be made provide that the purchase is returned within 7 days in its original condition at purchaser's cost.

For orders within Japan, payments can be made by postal transfer, bank transfer, or registered mail. For those from overseas, payments to be made by international postal money order or bank transfer in Japanese Yen. Bank charges are at purchaser's cost. Payment by major credit cards is also accepted. Other payment methods can be consulted.

原書房

101-0051

東京都千代田区神田神保町2-3

Tel 03 5212 7801

Fax 03 3230 1158

ホームページ <http://www.harashobo.com>

eメール ukiyoe@harashobo.com

HARA SHOBO

2-3 Kanda Jimbocho, Chiyoda-ku

Tokyo 101-0051 Japan

Tel +81 (0)3 5212 7801

Fax +81 (0)3 3230 1158

Website <http://www.harashobo.com>

e-mail ukiyoe@harashobo.com

原書房

101-0051

東京都千代田区神田神保町2-3

Tel 03 5212 7801

Fax 03 3230 1158

ホームページ <http://www.harashobo.com>

eメール ukiyoe@harashobo.com

HARA SHOBO

2-3 Kanda Jimbocho, Chiyoda-ku

Tokyo 101-0051 Japan

Tel +81 (0)3 5212 7801

Fax +81 (0)3 3230 1158

Website <http://www.harashobo.com>

e-mail ukiyoe@harashobo.com