

新収浮世絵版画目録 えどげいじゅつ

EDO GEIJUTSU -Catalogue of New Acquisitions



No. 99
2024.10

原書房
HARA SHOBO
Tokyo

原 書 房

<http://www.harashobo.com>

101-0051

東京都千代田区神田神保町2-3

Tel. 03 5212 7801

Fax. 03 3230 1158

eメール ukiyoe@harashobo.com

営業時間:

午前10時 - 午後6時

日・月・祭日 休業

郵便振替 00130-2-37578

みずほ銀行 九段支店

当座 0142732

三菱UFJ銀行 神保町支店

普通 0748571

三井住友銀行 神保町支店

普通 2003925

ゆうちょ銀行 ○一八支店

普通 9221851

HARA SHOBO

<http://www.harashobo.com>

2-3 Kanda Jimbocho, Chiyoda-ku,

Tokyo 101-0051 Japan

Tel. +81 (0)3 5212 7801

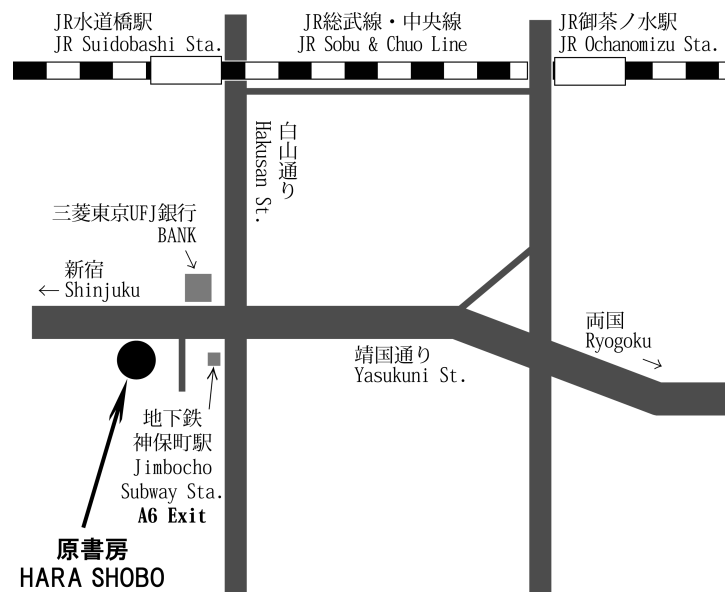
Fax. +81 (0)3 3230 1158

e-mail ukiyoe@harashobo.com

Gallery Hours:

Tuesday - Saturday, 11 am - 6pm

Closed on Sundays, Mondays and Public Holidays



地下鉄神保町 (三田線・新宿線・半蔵門線): A6出口 徒歩1分

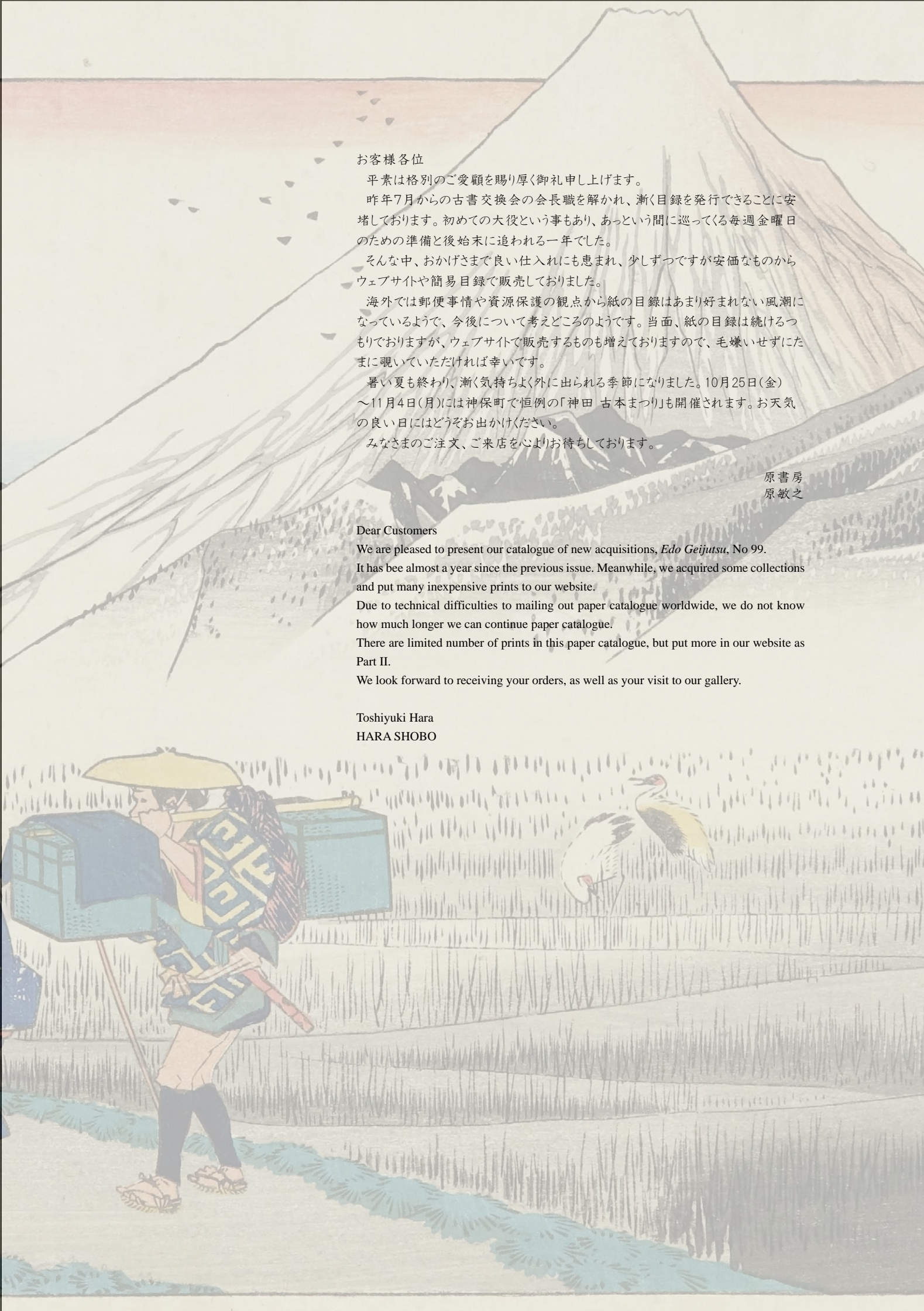
JR水道橋駅 (総武線): 東口 徒歩10分

JR御茶ノ水駅 (中央線・総武線): 西口 徒歩15分

Jimbocho Subway Station (Mita Line, Shinjuku Line, Hanzomon Line) Exit A6: 1min.

JR Suidobashi Station (JR Sobu Line) East Exit: 10mins.

JR Ochanomizu Station (JR Chuo Line, Sobu Line) West Exit: 15mins.



お客様各位

平素は格別のご愛顧を賜り厚く御礼申し上げます。

昨年7月からの古書交換会の会長職を解かれ、漸く目録を発行できることに安堵しております。初めての大役という事もあり、あっという間に巡ってくる毎週金曜日のための準備と後始末に追われる一年でした。

そんな中、おかげさまで良い仕入れにも恵まれ、少しずつですが安価なものからウェブサイトや簡易目録で販売しておりました。

海外では郵便事情や資源保護の観点から紙の目録はあまり好まれない風潮になっているようで、今後について考えどころのようです。当面、紙の目録は続けるつもりですが、ウェブサイトで販売するものも増えておりますので、毛嫌いせずにたまに覗いていただければ幸いです。

暑い夏も終わり、漸く気持ちよく外に出られる季節になりました。10月25日(金)～11月4日(月)には神保町で恒例の「神田 古本まつり」も開催されます。お天気の良い日にはどうぞお出かけください。

みなさまのご注文、ご来店を心よりお待ちしております。

原書房
原敏之

Dear Customers

We are pleased to present our catalogue of new acquisitions, *Edo Geijutsu*, No 99.

It has been almost a year since the previous issue. Meanwhile, we acquired some collections and put many inexpensive prints to our website.

Due to technical difficulties to mailing out paper catalogue worldwide, we do not know how much longer we can continue paper catalogue.

There are limited number of prints in this paper catalogue, but put more in our website as Part II.

We look forward to receiving your orders, as well as your visit to our gallery.

Toshiyuki Hara

HARA SHOBO



1 北斎 (HOKUSAI)
富嶽三十六景 武州千住 天保2年頃 (c.1831)
 刷良 保存良 極少汚 極少シミ 極少虫穴補修 下縁極少傷補修 弱中折
 25.4x37.6cm. ¥1,600,000



2 北斎 (HOKUSAI)
東海道名所一覽 2枚続 文政元年 (1818)
 刷良 保存良 極少虫穴
 43x57cm ¥1,100,000



3 英笑 (EISHO)
 懷宝一覽花のみやこ路 12枚揃 文政頃 (c.1818)
 刷良 保存良 一枚目少汚 少傷 他は極少汚 極少傷 薄裏打
 各約19x52cm. ¥500,000



4 広重 (HIROSHIGE)
東海道五拾三次之内
平塚 縄手道
天保4年頃 (c.1833)
刷極良 保存極良
25.7x38.1cm.
¥1,000,000



6 広重 (HIROSHIGE)
東海道五十三次之内 小田原 酒匂川
天保4年頃 (c.1833)
刷極良 保存良 少汚 極少虫穴補修
24.5x36.7cm. ¥450,000



5 広重 (HIROSHIGE)
東海道五拾三次之内 大磯 虎ヶ雨
天保4年頃 (c.1833)
刷良 保存良 極少汚 少虫穴補修 少トリム
25x36.1cm. ¥160,000



10 広重 (HIROSHIGE)
東海道五拾三次之内 金谷 大井川遠岸
天保4年頃 (c.1833)
刷良 保存良 極少汚 少虫穴補修 少トリム 中折
25.2x35.8cm. ¥250,000



9 広重 (HIROSHIGE)
東海道五拾三次之内 府中 安部川
天保4年頃 (c.1833)
刷良 保存良 極少汚 少シミ 縁少破補修
24.2x36.6cm. ¥120,000



11 広重 (HIROSHIGE)
東海道五拾三次之内 荒井 渡舟ノ図
天保4年頃 (c.1853) 刷良 保存良 極少汚
左上極少傷 少トリム 中折
24.3x36.7cm. ¥100,000



7 広重 (HIROSHIGE)
 東海道五拾三次之内 原 朝之富士 天保4年頃 (c.1833)
 刷極良 保存極良
 25.2x37.8cm. ¥3,800,000



8 広重 (HIROSHIGE)
 東海道五十三次之内 蒲原 夜之雪 天保3年頃 (c.1832)
 刷良 保存良 少汚 少ヤケ 中折部補修
 24.5x36.9cm. ¥2,500,000



13 広重 (HIROSHIGE)
五十三次名所図会 三
川崎 鶴見川 生麦の里
安政2年 (1855)
刷良 保存良 極少退色 縁極少汚
37.8x25.5cm. ¥300,000



12 広重 (HIROSHIGE)
行書東海道五十三次之内
土山 すだか山雨中の図
山田屋版 天保末頃 (c.1840)
刷良 保存良 右縁極少虫穴補修
22.3x34.2cm. ¥150,000



14 広重 (HIROSHIGE)
五十三次名所図会 十
小田原 海岸漁舎 安政2年 (1855)
刷良 保存良 極少汚 縁極少虫穴
37.6x25.5cm. ¥160,000



15 広重 (HIROSHIGE)
五十三次名所図会 十六
蒲原 岩淵の岡より不二河遠望
安政2年 (1855) 刷良 保存良
縁極少汚 左極少シミ 極少虫穴
37.7x25.5cm. ¥180,000



16 広重 (HIROSHIGE)
五十三次名所図会 十八
興津 おきつ川 さったの禁
安政2年 (1855)
刷良 保存良 極少虫穴
37.8x25.5cm. ¥140,000



17 広重 (HIROSHIGE)
東海道五十三次細見図会
日本橋 田舎道者江戸見物
弘化頃 (c.1844)
刷良 保存良 少汚 少シミ
少傷 極少虫穴 蔵印及シール
36.1x25.2cm. ¥160,000

18 広重 (HIROSHIGE)
六十余州名所図会
薩摩 坊ノ裏 雙剣石
安政3年 (1856)
刷良 保存良 左上極少汚
36.3x24.7cm. ¥250,000







24 広重 (HIROSHIGE)
 名所江戸百景 日本橋江戸ばし 安政4年 (1857)
 刷極良 保存良 縁極少汚
 37x25.3cm. ¥2,000,000



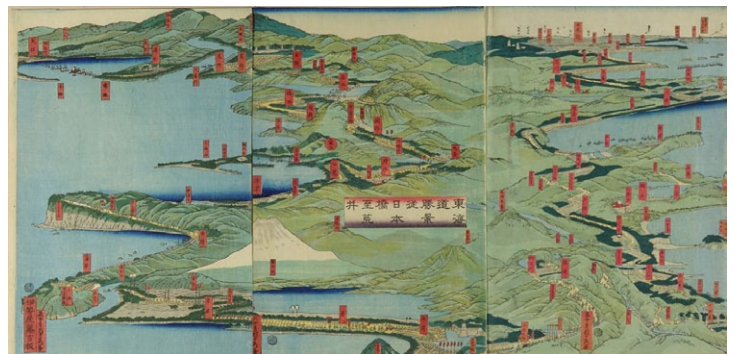
25 国芳 (KUNIYOSHI)
 東都名所 佃島 天保頃 (c.1830)
 刷良 保存良 極少汚
 角極少傷補修 中折部補修
 25.2x37.5cm. ¥3,500,000



27



26 国芳 (KUNIYOSHI)
横浜本町之図
3枚続 万延元年 (1860)
刷良 保存良
各約36.8x25.4cm.
¥350,000



28 貞秀 (SADAHIDE)
東海道勝景從日本橋至荒井
3枚続 文久3年 (1863)
刷良 保存良 右図極少シミ 少トリム
各約34.8x24.3cm. ¥150,000



29 広重二代 (HIROSHIGE II)
身延山朝詣群集新大橋の景
3枚続 文久3年 (1863)
刷良 保存良 縁少傷
各約37x25.5cm.
¥1,350,000



27 貞秀 (SADAHIDE)
 横浜交易西洋人荷物運送之図
 5枚続 文久元年 (1861)
 刷良 保存良 極少汚
 極少虫穴及虫穴補修
 各約37.3x25.3cm.
 ¥3,800,000



30 長崎版画 (NAGASAKI SCHOOL)
 フロシヤ人之図 レサノット
 文化元年 (1804)
 刷良 保存良 少汚 少傷
 46x17.5cm. ¥500,000

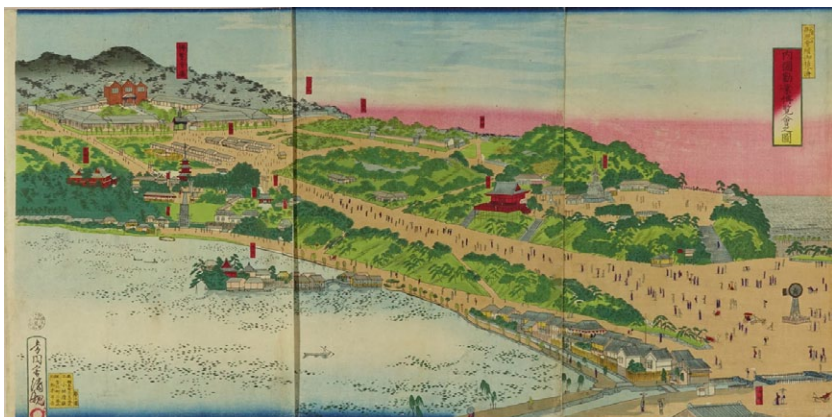
31 長崎版画 (NAGASAKI SCHOOL)
 阿蘭陀船図 文化頃 (c.1810)
 刷良 保存良
 32.3x21.8cm. ¥100,000



32 長崎版画 (NAGASAKI SCHOOL)
 オランダ人酒宴図 文化頃 (c.1810)
 刷良 保存良
 32x44.3cm. ¥150,000



33 長崎版画 (NAGASAKI SCHOOL)
 フロシヤ人 文化頃 (c.1805)
 刷良 保存良 極少シミ
 31.5x22.6cm. ¥180,000



34 清親 (KIYOCHIKA)
(第一回) 内国勸業博覧会之図
3枚続 明治10年 (1877)
刷良 保存良 極少汚 極少傷 薄裏打
各約36.1x24.5cm. ¥250,000



35 清親 (KIYOCHIKA)
東京名所 今戸有明樓之景 明治12年 (1879)
刷良 保存良 極少ピン穴 極少ナイフ跡 弱中折
24.9x36.3cm. ¥200,000



36 清親 (KIYOCHIKA)
東京名所 五本松雨月 ニス引 明治13年 (1880)
刷良 保存良 極少汚 極少ヤケ 極少穴
23.4x35.5cm. ¥280,000



37 清親 (KIYOCHIKA)
東京名所 五本松雨月 明治13年 (1880)
刷良 保存良 縁極少汚及シミ
24x36.4cm. ¥200,000



38 清親 (KIYOCHIKA)
東京名所 九段坂五月夜 明治13年 (1880)
刷良 保存良 少汚 少ヤケ
23x34.8cm. ¥160,000



39 清親 (KIYOCHIKA)
東京名所 柳原夜雨 ニス引 明治14年 (1881)
刷良 保存良 極少汚 極少虫穴
24.4x36.4cm. ¥330,000

40 清親 (KIYOCHIKA)
東京名所 浅草夜見世
明治14年 (1881)
刷良 保存良 極少シミ
24x36.3cm. ¥630,000



41 芳国 (YOSHIKUNI)
京坂名所図会 大坂松嶋廟出火之図 ニス引
明治18年 (1885)
刷極良 保存極良
24.2x35.3cm. ¥800,000

44 菱川師宣 (HISHIKAWA MORONOBU)
華の語い 第9図 寛文頃 (c.1670)
刷良 保存並 少汚 少傷 周围破補修
29.8x34.2cm. ¥250,000



43 菱川師宣 (HISHIKAWA MORONOBU)
華の語い 第11図 寛文頃 (c.1670)
刷良 保存並 少汚 少傷 周围破補修
29x34.5cm. ¥200,000



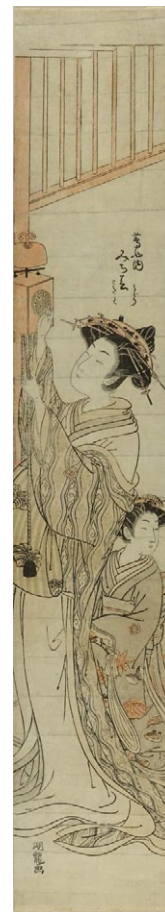
42 石川豊宣 (ISHIKAWA TOYONOBU)
月に愧じ… 宝暦頃 (c.1760)
刷良 保存良 24.5x35.8cm. ¥280,000





45
湖龍齋 (KORYUSAI)
葛屋内みち春 みどり ときは
安永頃 (c.1777)
刷良 保存良 退色
極少汚 少シワ
67.3x11.7cm.
¥180,000

46 歌麿 (UTAMARO)
男女図 寛政頃 (c.1789)
刷良 保存良 退色
極少汚 極少シミ 左縁折
38.5x25.3cm. ¥400,000



47 歌麿 (UTAMARO)
見立七福神
7枚揃 寛政頃 (c.1789)
刷良 保存良 極少汚
極少シミ 極少虫穴補修
各約18.5x15.5cm. ¥280,000



48 歌麿二代 (UTAMARO II)
梅桜面影競 河津 俣野 文政頃 (c.1818)
刷良 保存良 少汚 少シミ 極少虫穴補修
35.9x23.8cm. ¥200,000



49 栄之 (EISHI)
開運七目合 牛羊 寛政頃 (c.1790)
刷良 保存良 極少汚 極少シワ
22.2x16.1cm. ¥160,000



51 栄昌 (EISHO)
船上の二美人
寛政頃 (c.1795)
刷良 保存良 極少汚
極少傷 極少破補修
65x11.8cm. ¥380,000



52 豊国 (TOYOKUNI)
「七福神」より福祿寿 寿老人
3枚続の内1枚 寛政頃 (c.1790)
刷良 保存良 極少虫穴補修
各約38.9x26.2cm. ¥280,000



50 栄之 (EISHI)
青樓美人六歌仙 静玉屋志津加
寛政6年頃 (c.1794)
刷良 保存良 極少ヤケ
37.2x25.1cm. ¥1,200,000



56 英泉 (EISEN)
傾城江戸方格 く 飛鳥山
玉屋内 若紫 天保頃 (c.1830)
刷良 保存良 極少ヤケ
極少虫穴 弱中折
38.2x25.8cm. ¥120,000



53 英山 (EIZAN)
当世美人揃
天王御祭礼のけしき
文化8年 (1811)
刷良 保存良 少退色
極少汚 極少シミ 少トリム
35.6x25.7cm. ¥160,000



54 英山 (EIZAN)
松に鷹 竪2枚続 天保頃 (c.1830)
刷良 保存良 少ヤケ
各約35x25cm. ¥120,000



55
春扇 (SHUNSEN)
羽根と羽子板を持つ美人
竪2枚続 文政頃 (c.1818)
刷良 保存良
各約37x24.7cm.
¥250,000



57 英泉 (EISEN)
傘持美人 竪2枚続
文政末頃 (c.1829)
刷良 保存良
各約37x25.2cm.
¥280,000



60 国貞 (KUNISADA)
江戸新吉原 八朔 白無垢の図 3枚続 天保頃 (c.1830)
刷良 保存良 極少虫穴補修
各約38.5x26.2cm. ¥1,800,000



58 英泉 (EISEN)
時世美女競 抱けいしゃ
文政頃 (c.1818)
刷良 保存良 極少汚 少ヤケ 少シミ
38x26.2cm. ¥100,000



59 豊国二代 (TOYOKUNI II)
今様姿 流行狂画 しばらく
天保頃 (c.1830)
刷良 保存良 極少汚 極少虫穴補修
38.2x26.3cm. ¥110,000



61 国貞 (KUNISADA)
新板錦絵当世美人合 杜若きどり
文化末頃 (c.1815)
刷良 保存良 少汚
少シミ 極少虫穴
39x26cm. ¥100,000



63 豊国三代 (TOYOKUNI III)
詠織當世島 船の玩具
弘化頃 (c.1844)
刷良 保存良 極少汚
極少虫穴補修
35.5x25cm. ¥380,000

団扇の絵は広重画
Landscape of Mount Asama on the
round fan is designed by HIROSHIGE

62 国貞 (KUNISADA)
當世美人七小町 閑寺小町
天保頃 (c.1830)
刷良 保存良 極少汚
38.2x26.2cm. ¥200,000





69 国芳 (KUNIYOSHI)
暑中の夕立 3枚続 嘉永頃 (c.1848)
 刷良 保存良 右図極少虫穴
 各約37.3x25.7cm. ¥1,600,000



64 豊国三代 (TOYOKUNI III)
浅草奥山四季花園真景 其二 3枚続 嘉永5年 (1852)
 刷良 保存良 少虫穴
 各約35.8x24.6cm. ¥120,000



65 豊国三代 (TOYOKUNI III)
園の梅ゆかりの早咲 3枚続 嘉永5年 (1852)
 刷良 保存良 一部縁薄み 弱縦中折
 各約36.6x25.1cm. ¥160,000



66 豊国三代 (TOYOKUNI III)
四季花くらべの内 秋 3枚続 嘉永6年 (1853)
 刷良 保存良 極少汚 綴穴補修
 各約35.2x24.5cm. ¥250,000



67 豊国三代 (TOYOKUNI III)
時世茶乃稽古 安政3年 (1856)
 刷良 保存良 極少汚
 22.2x29.4cm. ¥230,000



68 豊国三代 (TOYOKUNI III)
霞春梅遊覧 3枚続 安政5年 (1858)
 刷良 保存良 端折
 各約35.8x25.3cm. ¥120,000



70
国芳 (KUNIYOSHI)
花色紙 芍薬 団扇絵
弘化2年頃 (c.1845)
刷良 保存良 極少シミ 極少虫穴補修
22.2x30.2cm.
¥2,500,000



71 国芳 (KUNIYOSHI)
山海愛度図会 廿三 これが着たい
飛驒神通川鯉 嘉永5年 (1852)
刷良 保存良 極少汚
36.7x25.2cm. ¥150,000



72 周延 (CHIKANOBU)
梅園唱歌図 3枚続 明治20年 (1887)
刷良 保存良 極少汚 縁極少傷
各約36.8x24.1cm. ¥280,000



73 周延 (CHIKANOBU)
男児池上二小舟を浮む
3枚続 明治20年 (1887)
刷良 保存良 少汚 少ヤケ
弱シワ 縁及角極少傷
各約36.5x24.5cm. ¥150,000



74 周延 (CHIKANOBU)
小学唱歌之略図
3枚続 明治20年 (1887)
刷良 保存良
各約36.5x25.5cm.
¥600,000



75 周延 (CHIKANOBU)
あづま 24枚揃+目次
明治29年 (1896)
刷良 保存良
35.5x24cm. ¥450,000



76 年方 (TOSHIKATA)
都のにしき 12枚揃+目録
明治20年代 (c.1890)
刷極良 保存極良
各20.8x29.6cm. ¥150,000



77 年方 (TOSHIKATA)
茶の湯日々艸 15枚揃+目録
明治29年 (1896)
刷極良 保存極良
各21.8x32.4cm. ¥250,000



78 豊国 (TOYOKUNI)
「意計高尾伊達染」寛政頃 (c.1790)
刷極良 保存極良 但極少汚 少トリム
37.6x24.8cm. ¥500,000



79 国貞 (KUNISADA)
俳優水滸伝豪傑一百八人の一個
市川九蔵 嵐吉三郎
2枚続 天保頃 (c.1830)
刷良 保存良 極少汚 薄裏打
各約36.3x24.5cm. ¥120,000



80 豊国三代 (TOYOKUNI III)
安宅の本店 平右エ門町 鮎松
3枚続 安政5年 (1854)
刷良 保存良 極少汚 少虫穴補修
各約35.8x24.7cm. ¥500,000



81 豊国三代 (TOYOKUNI III) 忠臣蔵 12枚揃 安政元年 (1854)
刷良 保存良 一部極少汚 極少シミ 極少角傷 各約25.3x37.6cm. ¥280,000



82 豊国三代 (TOYOKUNI III)
豊国揮毫奇術鏡 菊池香壽丸 文久3年 (1863)
厚奉書刷 刷極良 保存極良
36x25.8cm. ¥180,000



83 国明 (KUNIAKI)
橘や家橘 成駒や芝翫 山崎や紫扇 3枚続 文久2年 (1862)
刷良 保存良 極少汚 一部縁極少傷
各約35.5x25cm. ¥400,000



84 芳年 (YOSHITOSHI)
「假名手本忠臣蔵」 6枚揃 万延元年 (1860)
刷良 保存良 極少汚 角少破補修 少トリム
各約36.1x23.9cm. ¥250,000



85 国周 (KUNICHIKA)
当世教優勉営図 3枚続 明治9年 (1876)
刷良 保存良 少シミ 少傷 極少虫穴
各約36.5x24.6cm. ¥120,000



86 国周 (KUNICHIKA)
白縫物語 巻頭一個 8枚揃 明治12年 (1879)
刷良 保存良 一図極少穴 一図裏打剥離による傷
各約36.2x24.3cm. ¥250,000



87 国芳 (KUNIYOSHI)
通俗水滸伝豪傑百八人之内一個
白面郎君鄭天寿 文政10年頃 (c.1827)
刷良 保存良 極少汚
極少虫穴補修 少トリム
37.2x25.1cm. ¥550,000



88 国芳 (KUNIYOSHI)
通俗水滸伝豪傑百八人之内一個
天目將彭玘 文政10年頃 (c.1827)
刷良 保存良 極少汚
極少虫穴補修 少トリム
37.1x25.1cm. ¥300,000



89 国芳 (KUNIYOSHI)
通俗水滸伝豪傑百八人之内一個
操刀鬼曹正 文政10年頃 (c.1827)
刷良 保存良 少汚
極少虫穴補修
38.7x26.3cm. ¥480,000



90 国芳 (KUNIYOSHI)
誠忠義士肖像 邑松三太夫高直
嘉永5年 (1852)
刷良 保存良 極少汚 綴穴
35.7x25.1cm. ¥200,000



91 国芳 (KUNIYOSHI)
誠忠義士肖像 矢頭與茂七教兼
嘉永5年 (1852)
刷良 保存良 極少汚 綴穴
35.7x25.1cm. ¥200,000



92 湖龍斎 (KORYUSAI)
平教経 天明頃 (c.1781)
刷良 保存良 退色 極少汚
極少シミ 極少傷
26.5x19.4cm. ¥100,000

林忠正印
Provenance: Hayashi Tadamasa



93 春亭 (SHUNTEI)
島山重忠 上総悪七兵衛景清 2枚続 文化頃 (c.1804)
刷良 保存良 少汚 綴穴
各約36.5x25.5cm. ¥150,000



94 国貞 (KUNISADA)
舎那王僧正ヶ谷二兵衛ヲ学ブ図 3枚続 天保頃 (c.1830)
刷良 保存良 少汚 少傷 極少虫穴補修
各約37x25.1cm. ¥120,000



95 芳藤 (YOSHIFUJI)
木曾義仲粟津原合戦 今井石田戦ひの図 3枚続
弘化頃 (c.1844) 刷良 保存良 極少虫穴補修
各約36.5x25cm. ¥250,000



96 貞秀 (SADAHIDE)
源平八島壇之浦長門国 赤間関合戦之図 3枚続
元治元年 (1864) 刷良 保存良 極少汚 極少シミ 折
各約36.5x25.2cm. ¥120,000



97 国秀 (KUNIhide)
新撰名譽鏡 孝 新中納言知盛 3枚続 明治29年 (1896)
刷良 保存良
各約36.9x25cm. ¥130,000



98 芳虎 (YOSHITORA)
堀川夜討大合戦 3枚続 万延元年 (1860)
刷良 保存良
各約35.7x24.9cm. ¥130,000



99 芳虎 (YOSHITORA)
加賀国安宅新関武蔵坊弁慶 勸進帳読吟欺富樫趣陸奥之図
3枚続 嘉永6年 (1853) 刷極良 保存良 極少虫穴
各約37.5x25.7cm. ¥120,000



100 芳虎 (YOSHITORA)
兵庫合戦遠矢之図 3枚続 万延元年 (1860)
刷良 保存良 中図裏極少墨汚
各約35.8x24.6cm. ¥180,000



101 清親 (KIYOCHIKA) 三河国大樹寺合戦 3枚続
明治12年 (1879) 刷良 保存良
各約37x25cm. ¥180,000



102 芳房 (YOSHIFUSA) 兄川合戦ノ図 3枚続
安政6年 (1859) 刷良 保存良
各約35x25cm. ¥110,000



103 芳房 (YOSHIFUSA) 兄川合戦ノ図 3枚続
安政6年 (1859) 刷良 保存良 極少虫穴補修
各約35.8x24.7cm. ¥150,000



104 国久 (KUNIHISA) 佐藤正清 三井智者之守 3枚続
安政5年 (1858) 刷良 保存良
各約35.8x24.6cm. ¥120,000



105 芳員 (YOSHIKAZU) 太平記錫ヶ瀧大合戦 3枚続
文久2年 (1862) 刷極良 保存極良 但弱折
各約36.5x25.5cm. ¥180,000



106 芳虎 (YOSHITORA) 二雄鎗戦之図 3枚続
慶応2年 (1866) 刷良 保存良 右図極少シミ及弱中折
各約37.1x25.3cm. ¥150,000



107 周延 (CHIKANOBU) 蒙古襲来之図 3枚続
明治24年 (1891) 刷良 保存良 中図上破補修 弱中折
各約36.8x24.9cm. ¥180,000



108 芳虎 (YOSHITORA)
弘安四年之五月北条時宗蒙古之賊船ヲ悉く打破る図 3枚続
慶応2年 (1866) 刷良 保存良 極少虫穴
各約35.9x24.5cm. ¥250,000



115 芳年 (YOSHITOSHI)
徳川治蹟年間紀事 四代 巖有院殿家綱公
3枚続 明治8年 (1875)
刷良 保存良 極少汚 上縁に綴穴
各約37x25.5cm. ¥140,000



109 芳幾 (YOSHIKU)
英名二十八衆句 鞠ヶ瀬秋夜
慶応3年 (1867)
刷良 保存良 極少汚
極少虫穴補修 下縁極少傷
37.1x24.8cm. ¥170,000



110 芳幾 (YOSHIKU)
英名二十八衆句 佐野治郎左衛門
慶応3年 (1867)
刷良 保存良 極少汚 縁極少傷
37x24.5cm. ¥250,000



111 芳年 (YOSHITOSHI)
魁題百撰相 柴田伊賀守勝豊
明治元年 (1868)
刷極良 保存極良
36.9x24.7cm. ¥240,000



112 芳年 (YOSHITOSHI)
魁題百撰相 会津黄門景勝
慶応4年 (1868)
刷良 保存良
右下角少虫穴補修 極少シワ
36x24.5cm. ¥250,000



113 芳年 (YOSHITOSHI)
魁題百撰相 小幡助六郎信世
明治元年 (1868)
刷良 保存良 極少汚 少傷
36x24.5cm. ¥140,000



114 芳年 (YOSHITOSHI)
魁題百撰相 鬼小島弥太郎
明治元年 (1868)
刷良 保存良 極少紙漉ムラ
36.7x24.4cm. ¥260,000



116 芳年 (YOSHITOSHI)
奥州安達がはらひとつ家の図
縦2枚続 明治18年 (1885)
刷極良 保存良 端折 少トリム
各約36.5x23.5cm. ¥1,800,000



117 芳年 (YOSHITOSHI)
金太郎捕鯉魚
縦2枚続 明治18年 (1885)
刷極良 保存良 端折 少トリム
各約36.2x24.4cm. ¥1,400,000



118 芳年 (YOSHITOSHI)
田舎源氏 堅2枚続
明治18年頃 (c.1885)
刷良 保存良 上図上角極少破補修
弱縦横中折
各約36.1x25.7cm. ¥450,000



119 芳年 (YOSHITOSHI)
田舎源氏 堅2枚続
明治18年 (1885)
刷良 保存良 極少汚
極少ヤケ 一部角少破補修
各約37.6x26cm. ¥550,000



120 芳年 (YOSHITOSHI)
文覚荒行之図 堅2枚続
明治33年 (1900)
刷極良 保存極良 端折 少トリム
各約36x24.2cm. ¥600,000



121 芳年 (YOSHITOSHI)
月百姿 破窓月 明治19年 (1886)
刷良 保存良 極少穴
37.1x24.8cm. ¥150,000



122 芳年 (YOSHITOSHI)
月百姿 源氏夕顔巻
明治19年 (1886)
刷良 保存極良
36.7x25cm. ¥800,000



123 芳年 (YOSHITOSHI)
新形三十六怪撰 小町桜の精
初刷 明治22年 (1889)
刷極良 保存良 左端折 少トリム
35.5x24.5cm. ¥550,000



124 芳年 (YOSHITOSHI)
新形三十六怪撰
清玄の霊 桜姫を慕うの図
初刷 明治22年 (1889)
刷良 保存良 極少汚
左端折 少トリム
35.6x24.4cm. ¥380,000



125 芳年 (YOSHITOSHI)
新形三十六怪撰 藤原秀郷
龍宮城蜈蚣射るの図 明治23年 (1890)
刷極良 保存良 極少シミ 弱シワ
36.9x25cm. ¥230,000



126 芳年 (YOSHITOSHI)
新形三十六怪撰 貞信公
夜宮中に怪を懼しむの図 明治22年 (1889)
刷極良 保存極良 但少トリム
35.5x23.5cm. ¥250,000



127 芳年 (YOSHITOSHI)
新形三十六怪撰 鐘道夢中捉鬼之図
明治23年 (1890)
刷極良 保存極良 但少トリム
35.5x23.6cm. ¥330,000



128 芳年 (YOSHITOSHI)
芳年漫画 天延四年秋妖怪土蜘蛛悩源頼光寝所
酒田公時等宿直欲払其妖図 2枚続 明治19年 (1886)
刷良 保存良 極少シミ 少裏打残
35.9x47cm. ¥200,000



129 芳年 (YOSHITOSHI)
高島大井子の話 2枚続 明治22年 (1889)
刷極良 保存極良
各約35.5x24.3cm. ¥160,000



130 芳年 (YOSHITOSHI)

新撰東錦絵 小紫比翼塚之話 2枚続

明治19年 (1886) 刷良 保存良 極少シミ 右図極少虫穴補修
各約35.5x24.7cm. ¥130,000



132 芳年 (YOSHITOSHI)

新撰東錦絵 神明相撲闘争之図 2枚続

明治19年 (1886) 刷良 保存良

各約35.5x24cm. ¥140,000



134 芳年 (YOSHITOSHI)

新撰東錦絵 越田御殿酒宴之図 2枚続

明治19年 (1886) 刷良 保存良 少酸化シミ

各約35.5x24.7cm. ¥130,000



136 芳年 (YOSHITOSHI)

風俗三十二相 めがさめさう

弘化年間むすめの風俗

明治21年 (1888)

刷良 保存良

極少退色 極少ヤケ

37.2x25.5cm. ¥240,000



131 芳年 (YOSHITOSHI)

新撰東錦絵 生嶋新五郎之話 2枚続

明治18年 (1885) 刷良 保存良 極少汚

各約35.5x24.8cm. ¥180,000



133 芳年 (YOSHITOSHI)

新撰東錦絵 一休地獄太夫之話 2枚続

明治19年 (1886) 刷良 保存良 少シミ 少トリム

各約35.5x24.2cm. ¥130,000



135 芳年 (YOSHITOSHI)

新撰東錦絵 佐野次郎左衛門の話 2枚続

明治19年 (1886) 刷良 保存良 端折

各約35.6x24.5cm. ¥150,000



137
芳年 (YOSHITOSHI)
風俗三十二相 遊歩がしたさう
明治21年 (1888)
刷極良 保存極良
但左上角極少シミ
37.5x25.4cm.
¥600,000



138 芳年 (YOSHITOSHI)
風俗三十二相 すずしさう
明治21年 (1888)
刷良 保存良
37.4x25.4cm. ¥180,000



139 春英 (SHUN'EI)
四つ車(秋田)山嵐(鳥取)取組図
文化2年 (1805)
刷良 保存良 極少汚 極少虫穴補修
35.5x23.6cm. ¥160,000



140 豊国三代 (TOYOKUNI III)
常山三ツ鱗取組図 3枚続 弘化頃 (c.1844)
刷良 保存良 極少汚 極少虫穴補修
各約37.6x25.5cm. ¥100,000



141 国綱 (KUNITSUNA)
両国大相撲繁栄之図 3枚続 嘉永6年 (1853)
刷良 保存良 極少汚 極少虫穴補修
各約36.5x25.3cm. ¥120,000



142 芳幾 (YOSHIKU)
千年川 出釈迦山 取組の図 3枚続 文久2年 (1862)
刷良 保存良 中図極少汚及極少穴
各約37x25cm. ¥150,000



143 国芳 (KUNIYOSHI)
南伝馬町天王祭礼 嘉永頃 (c.1848)
刷良 保存良 少汚 少傷 縁極少破
36.8x25.6cm. ¥220,000



147 国利 (KUNITOSHI)
しん板 猫のはなし
明治10年代 (c.1880)
刷良 保存良
36.9x24.3cm.
¥160,000



148 国利 (KUNITOSHI)
新板猫生徒たわむれあそび
明治20年 (1887)
刷良 保存良 少シミ
傷 極少破補修 中折
36x24.2cm.
¥120,000



144 無款 (UNSIGNED)
開扉落涙山非常明王 安政2年 (1855)
刷良 保存良 極少汚 極少シミ 虫穴
36x47cm. ¥200,000



145 曉斎 (KYOSAI)
新板七福神八大傳之図 3枚続 明治18年 (1885)
刷極良 保存極良 但左図極少穴
各約37x25cm. ¥850,000



146 曉斎 (KYOSAI)
曉斎楽画 十号 しんぼふ 明治7年 (1874)
刷良 保存良 極少汚 極少傷
36.5x24.7cm. ¥300,000



149 昇雲 (SHOUN)
雪中雉 明治末頃 (c.1900)
刷良 保存良
37x18.9cm. ¥180,000



150 小原古邨 (OHARA KOSON)
鵞鳥 西宮版 明治末頃 (c.1910)
刷良 保存良
45.9x25.5cm. ¥120,000



151 小原古邨 (OHARA KOSON)
雪中鷲図 西宮版 明治末頃 (c.1910)
刷極良 保存良 極少シミ
43.7x27.5cm. ¥100,000



152 伊東深水 (ITO SHINSUI)
現代美人集 第二輯 花火
限定250 昭和7年 (1932)
刷極良 保存極良
43.2x27.6cm. ¥800,000



153 伊東深水 (ITO SHINSUI)
現代美人集 第二輯 紅梅
限定250 昭和8年 (1933)
刷極良 保存極良
43x28cm. ¥750,000



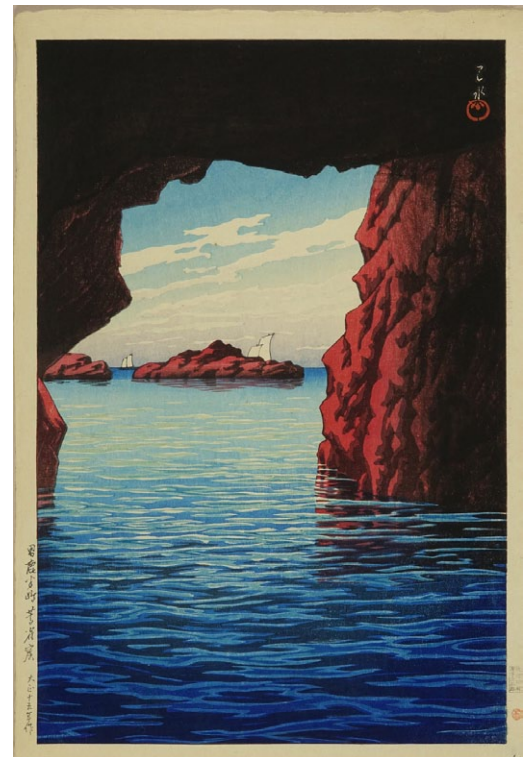
155 春仙 (SHUNSEN)
三世市川寿海「木村重成」昭和27年(1952)
刷良 保存良
40.3x27.5cm. ¥120,000



154 ポール・ジャクレー (PAUL JACOULET)
フィデの娘 限定150 昭和10年(1935)
刷極良 保存極良
46.3x35.6cm. ¥380,000
摺師 藤井周之助



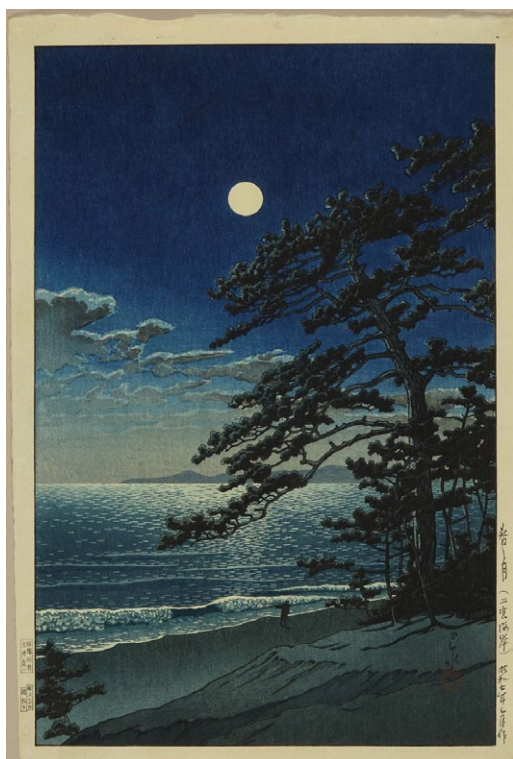
157 川瀬巴水 (KAWASE HASUI)
星月夜(宮嶋) 昭和3年(1928)
刷極良 保存極良 但上縁極薄シミ
38.3x25.7cm. ¥800,000



156 川瀬巴水 (KAWASE HASUI)
男鹿半島嵩雀窟 大正15年(1926)
刷極良 保存良 極少ヤケ
38.5x26.3cm. ¥1,000,000



158 川瀬巴水 (KAWASE HASUI)
夜之池端 (不忍池)
土井貞一版 昭和7年 (1932)
刷極良 保存極良
26.7x39.2cm. ¥1,400,000



159 川瀬巴水 (KAWASE HASUI)
春之月 (二宮海岸)
土井貞一版 昭和7年 (1932)
刷極良 保存極良
38.8x25.9cm. ¥1,100,000

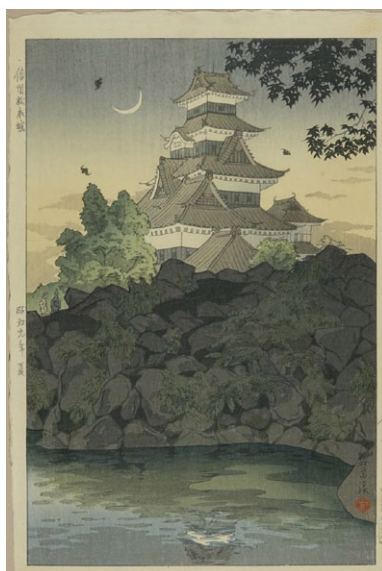


160 川瀬巴水 (KAWASE HASUI)
霧之朝 (四谷見附)
土井貞一版 昭和7年 (1932)
刷極良 保存極良
39.2x26.5cm. ¥1,000,000

161 川瀬巴水 (KAWASE HASUI)
駿河由比町 昭和9年 (1934)
刷極良 保存極良
39.1x26.2cm. ¥1,000,000



162
石渡江逸 (ISHIWATA KOITSU)
犬芝居 昭和6年 (1931)
刷極良 保存極良
39x25.8cm. ¥500,000



163
笠松紫浪 (KASAMATSU SHIRO)
信州 松本城 昭和9年 (1934)
刷極良 保存良 極薄シミ
38.6x26cm. ¥300,000



164 高橋弘明 (TAKAHASHI HIROAKI)
上野東照宮 昭和初頃 (c.1927)
刷極良 保存良 極少シミ 弱折 裏打残
37.8x17.1cm. ¥150,000

165
土屋光逸 (TSUCHIYA KOITSU)
雪の堅田浮見堂 後刷
昭和9年 (1934)
刷良 保存良 極少擦
38.7x26.5cm. ¥180,000





167 武蔵探題 (MUSASHI TANDAI)
無題 (鯉退治) 令和5年 (2023)
紙本 墨 水彩
50x30cm. ¥120,000



166 武蔵探題 (MUSASHI TANDAI)
無題 (達磨) 令和5年 (2023)
紙本 墨 水彩
50x30cm. ¥100,000

武蔵 探題 (1942年生)
中学生から水彩画を始める
建築家であるとともに1970年代から画家として活動
1992年頃から英国王立水彩画協会公募展入選30回以上
60年来の浮世絵コレクター

MUSASHI TANDAI (b.1942)
Started painting in the age of 12.
Working as an artist, besides an architect.
Selected for open exhibition of
Royal Watercolour Society over thirty times since 1992.
Collecting ukiyo-e over sixty years.

全ての作品はウェブサイトでご覧いただけます

Catalogue continues to "Part II" on our website



<https://www.harashobo.com/catalog.php>

詳細な画像は当店ウェブサイトにてご覧ください。

<https://www.harashobo.com/catalog.php>

←左ページのQRコードからスマートフォンやタブレットでもご覧いただけます。

パート II

No. 200～410

200 国芳・国貞 (KUNIYOSHI/KUNISADA)
東八景ノ内 (江戸八景の八変化舞踊)
8枚揃 天保10年 (1839) 3月 中村座
刷良 保存良 右縁少傷及綴穴補修 一部角破補修
各約25x18.6cm. ¥80,000



201 国輝 (KUNITERU)
仮名手本忠臣蔵
12枚揃 嘉永頃 (c.1848)
刷良 保存良 一部少汚
少傷 虫穴 初段のみ裏打
各約24.6x36cm.
¥85,000



202 小国政 (KOKUNIMASA)
日清海戦大孤山沖大激戦 大日本海軍大勝利之図 6枚続 明治27年 (1894)
刷良 保存良 極少シミ 極少ヤケ 一部縁少傷 薄裏打
各約35.6x23.4cm. ¥60,000



203 半嘯 (HANPO)
二重橋外御大葬之図
6枚続 大正元年 (1912)
刷良 保存良 極少ヤケ 極少シミ
各約38.1x25.5cm.
¥45,000



204 広重 ¥70,000
行書東海道五十三次之内 まい坂 今切海上舟渡
天保後期(c.1840) 22.6x33.4cm.
刷良 保存良 極少汚 極少虫穴 蔵印及シール 中折



205 広重 ¥90,000
五十三次名所図会 四十 池鯉鮒 八ッ橋 むら杜若の古せき
安政2年(1855) 37.5x25.5cm.
刷良 保存良 縁極少汚 左縁極少虫穴



206 広重 ¥80,000
五十三次名所図会 五十一 水口 名松平 松山の麓
安政2年(1855) 35.4x23.4cm.
刷良 保存良 少トリム 蔵印及シール



207 広重 ¥50,000
国尽貼交図会 十八 肥後 日向 大隅桜島 薩摩 対馬
嘉永5年(1852) 37.3x25.3cm.
刷良 保存良 極少汚 極少シミ 裏打残



208 豊国三代・広重二代 ¥35,000
江戸自慢三十六興 浅草 年の市
元治元年(1864) 35.8x24.7cm.
刷良 保存良 極少汚 右縁極少傷



209 豊国三代・広重二代 ¥30,000
江戸自慢三十六興 目黒不動 餅花
元治元年(1864) 35.7x24.7cm.
刷良 保存並 少汚 少傷



210 豊国三代・広重二代 ¥35,000
江戸自慢三十六興 池上本門寺会式
元治元年(1864) 35.7x24.6cm.
刷良 保存良 極少汚 上角少補修 下縁少トリム



211 豊国三代・広重二代 ¥35,000
江戸自慢三十六興 堀之内淀ばし水飴
元治元年(1864) 35.6x24.5cm.
刷良 保存良 極少汚 左縁極少破補修



212 清親 ¥95,000
東京名所 湯島元聖堂之景
明治12年(1879) 23.9x34.3cm.
刷良 保存良 少ヤケ



213 清親 ¥95,000
東京名所 今戸有明楼之景
明治12年(1879) 23.3x33.7cm.
刷良 保存良 極少シミ 極少ヤケ 上角少傷 中折



214 清親 ¥80,000
東京名所 小梅曳舟通雪景
明治12年(1879) 24.2x36cm.
刷良 保存良 極少汚 極少虫穴 中折



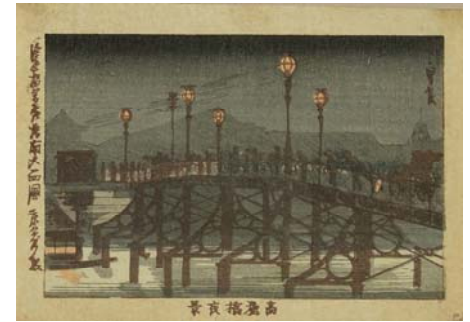
215 清親 ¥80,000
東京名所 上野六角茶屋
明治13年(1880) 24.5x36.9cm.
刷良 保存良 極少汚 裏角にマット残



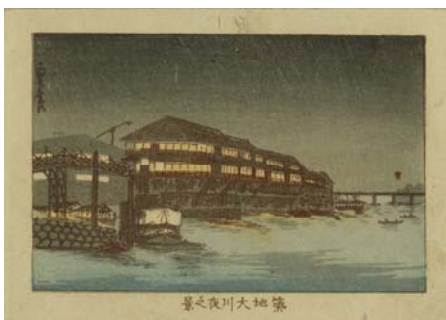
216 清親 ¥35,000
日本名勝図会 房州 鏡が浦
明治30年(1897) 36.7x23.7cm.
刷良 保存良 中折



217 貞信二代 ¥20,000
天保山夕景
明治20年頃(c.1887) 12.1x16.9cm.
刷良 保存良 極少汚 角折



218 貞信二代 ¥20,000
高麗橋夜景
明治20年頃(c.1887) 11.9x16.5cm.
刷良 保存良 縁極少シミ



219 貞信二代 ¥30,000
築地大川夜之景(大阪)
明治20年頃(c.1887) 12x16.9cm.
刷良 保存良 縁極少汚



220 国輝 ¥45,000
東京名所内桜田全図 3枚続
明治2年(1869) 各約36.5x25cm.
刷良 保存良 極少汚 極少シミ 少縁傷補修



221 暁斎 ¥95,000
東京名所之内上野山内一覽之図 3枚続
明治14年(1881) 各約37.5x25cm.
刷良 保存良 極少ヤケ



222 芳盛 ¥28,000
吾妻新橋金龍山真景及び木造富士山縦覧場 総而浅草繁栄之全図 3枚続
明治20年(1887) 各約35.8x24.9cm.
刷良 保存並 少シミ 少ヤケ 少傷 左図少破穴



223 幾英 ¥28,000
皇居御造営略景 3枚続
明治21年(1888) 各約35.5x23.6cm.
刷良 保存良 左図極少シミ 薄裏打



224 英泉 ¥45,000
立美人 豎2枚続
文政末頃(c.1830) 73x24.8cm.
刷良 保存良 極少汚 少ヤケ



225 英泉 ¥45,000
立美人 豎2枚続
文政末頃(c.1829) 各約36.5x24.2cm.
刷良 保存良 少汚 少シミ 少ヤケ



226 英泉 ¥38,000
傘持美人 豎2枚続
文政頃(c.1818) 各約37x24cm.
刷良 保存並 ヤケ



227 英泉 ¥70,000
東都名所合 深川新地
天保頃(c.1835) 38.2x25.9cm.
刷良 保存良 極少虫穴



228 国貞 ¥55,000
稚芸能琴碁書画 豎2枚続
天保頃(c.1830) 各約36.8x24.9cm.
刷良 保存並 ヤケ 極少シミ 中折部極少破



229 国貞 ¥90,000
御詠当世好 注文 山舞縮緬
天保頃(c.1830) 37.7x24.7cm.
刷良 保存良 極少汚 極少シミ 極少虫穴 補修



230 国貞 ¥55,000
春交加 まんざい
天保頃(c.1830) 38x25.8cm.
刷良 保存良 少汚 少シミ



231 豊国二代
東名所芝八景 高名輪帛帆
天保頃(c.1830) 38.1x26.2cm.
刷良 保存良 少虫穴補修

¥70,000



232 広重
婦久徳金の成木 むつまし木
嘉永頃(c.1848) 37x25.5cm.
刷良 保存良 極少汚 極少シミ

¥95,000



233 豊国三代
露福夢妻戸白萩 3枚続
嘉永頃(c.1848) 各約35.4x24.4cm.
刷良 保存良 右図左縁折

¥70,000



234 豊国三代
花鳥風月ノ内 風 3枚続
嘉永頃(c.1848) 各約36x25cm.
刷良 保存良 極少虫穴補修 一部端折
薄裏打

¥70,000



235 豊国三代
江戸名所百人美女 芝あたご
安政4年(1857) 37.2x25.5cm.
刷良 保存良

¥70,000



236 豊国三代
江戸名所百人美女 かやば町
安政4年(1857) 36.8x25.4cm.
刷良 保存良 極少汚 極少虫穴

¥70,000



237 豊国三代
源氏後集余情 第一巻 桐壺
安政5年(1858) 各約36.6x26.1cm.
刷良 保存良 極少汚 少虫穴補修

¥28,000



238 豊国三代
源氏後集余情 第二巻 帚木
安政4年(1857) 各約36.7x25.4cm.
刷良 保存良 極少汚 極少シミ 極少虫穴
補修 中折跡 薄裏打

¥28,000



239 豊国三代
源氏後集余情 第三巻 空蟬
安政5年(1858) 各約36.7x25.4cm.
刷良 保存良 極少汚

¥32,000



240 豊国三代 ¥35,000
源氏後集余情 第四卷 末摘花
安政4年(1857) 各約36.6x25.8cm.
刷良 保存良 極少汚 極少虫穴補修



241 豊国三代 ¥28,000
源氏後集余情 第五卷 夕顔
安政5年(1858) 各約35.2x25.2cm.
刷良 保存良 極少汚 極少シミ 極少虫穴
補修 縁少傷 中折跡 薄裏打



242 豊国三代 ¥35,000
源氏後集余情 第六卷 若紫
安政4年(1857) 各約36.5x25.5cm.
刷良 保存良 極少汚 極少虫穴補修 中
折跡 薄裏打



243 豊国三代 ¥35,000
源氏後集余情 第九卷 紅葉の賀
安政5年(1858) 各約36.6x25.4cm.
刷良 保存良 極少汚 極少虫穴補修 中
折跡 薄裏打



244 豊国三代 ¥30,000
源氏後集余情 第十卷 花の宴
安政5年(1858) 各約36.6x25.2cm.
刷良 保存良 極少汚 極少虫穴補修 中
折跡 薄裏打



245 豊国三代 ¥23,000
源氏後集余情 第十三卷 蓬生
安政5年(1858) 各約35.3x24.6cm.
刷良 保存良 極少汚 少シミ 極少虫穴



246 豊国三代 ¥33,000
源氏後集余情 第十四卷 あふひ
安政4年(1857) 各約36.7x25.9cm.
刷良 保存良 極少汚 左図右下縁補及綴
穴補修



247 豊国三代 ¥32,000
源氏後集余情 第十五卷 さかき
安政5年(1858) 各約36.6x25.6cm.
刷良 保存良 極少汚 極少虫穴補修 中
折跡 薄裏打



248 豊国三代 ¥32,000
源氏後集余情 第十六卷 関屋
安政5年(1858) 各約36.6x25.3cm.
刷良 保存良 極少汚 極少虫穴補修 中
折跡 薄裏打



249 豊国三代 ¥35,000
源氏後集余情 第十七巻 絵合
安政5年(1858) 各約36.6x25.5cm.
刷良 保存良 極少虫穴補修



250 豊国三代 ¥32,000
源氏後集余情 第十八巻 松かぜ
安政5年(1858) 各約36.6x25.2cm.
刷良 保存良 極少虫穴補修 中折跡 薄裏打



251 豊国三代 ¥30,000
源氏後集余情 第二十四巻 胡蝶
安政6年(1859) 各約36.3x25.3cm.
刷良 保存良 少シミ 極少虫穴補修 中折跡 薄裏打



252 豊国三代 ¥30,000
源氏後集余情 第二十五巻 ほたる
安政5年(1858) 各約36.6x24.9cm.
刷良 保存良 極少汚 極少虫穴補修 中折跡 薄裏打



253 豊国三代 ¥30,000
源氏後集余情 第二十六巻 常夏
安政5年(1858) 各約36.6x25.3cm.
刷良 保存良 極少汚 極少虫穴補修 中折跡 薄裏打



254 豊国三代 ¥35,000
源氏後集余情 第三十巻 藤袴
安政5年(1858) 各約36.6x25.3cm.
刷良 保存良 極少虫穴補修



255 豊国三代 ¥30,000
源氏後集余情 第三十一巻 おとめ
安政5年(1858) 各約36.5x25.2cm.
刷良 保存良 極少汚 極少虫穴補修 中折跡 薄裏打



256 豊国三代 ¥28,000
源氏後集余情 第三十三巻 藤の裏葉
安政5年(1858) 各約36.5x24.9cm.
刷良 保存良 極少汚



257 豊国三代 ¥28,000
源氏後集余情 第三十四巻 若菜の上
安政5年(1858) 各約36.5x25.3cm.
刷良 保存良 極少汚 極少シミ 極少虫穴補修 中折跡 薄裏打



258 豊国三代 ¥30,000

源氏後集余情 第三十五卷 若菜の下
安政5年(1858) 各約36.6x25.6cm.

刷良 保存良 極少虫穴補修



259 豊国三代 ¥30,000

源氏後集余情 第三十八卷 鈴むし
文久元年(1861) 各約36.5x25.5cm.

刷良 保存良 極少汚 極少虫穴補修 中
折跡 薄裏打



260 豊国三代 ¥35,000

源氏後集余情 第三十九卷 夕霧
安政5年(1858) 各約36.5x25.8cm.

刷良 保存良 極少汚 極少虫穴補修 中
折跡 薄裏打



261 豊国三代 ¥33,000

源氏後集余情 第四十六卷 椎が本
安政6年(1859) 各約35.7x24.2cm.

刷良 保存良 極少汚 極少虫穴補修 中
折跡 薄裏打



262 国周 ¥20,000

東京三十六会席 錦語楼 その
明治3年(1870) 37x24.8cm.

刷良 保存良 極小汚 極少シミ 極少虫穴
補修



263 国周 ¥33,000

見立十六楽玩之内 縁結の楽 柳ばし 小
雪

明治5年(1872) 35.9x24.8cm.
刷良 保存良



264 周延 ¥38,000

徳川家将軍図解 3枚続
明治17年頃(c.1884) 各約37x24.9cm.

刷良 保存極良



265 周延 ¥23,000

東風俗福づくし 馥郁
明治22年頃(c.1889) 35.2x23.8cm.

刷良 保存良 極少汚 少トリム



266 周延 ¥23,000

東風俗福づくし ふくろう
明治22年頃(c.1889) 35.4x23.8cm.

刷良 保存良 極少汚 少トリム



267 周延 ¥23,000
東風俗福つくし ふく写
明治23年(1890) 35.4x24.8cm.
刷良 保存良 極少汚 極少シミ 少トリム



268 周延 ¥23,000
東風俗福つくし ふくどく
明治22年頃(c.1889) 35.4x23.7cm.
刷良 保存良 極少汚 少トリム



269 周延 ¥23,000
東風俗福つくし へんふく
明治22年頃(c.1889) 35.3x24.4cm.
刷良 保存良 極少汚 少トリム



270 周延 ¥23,000
東風俗福つくし 霧ふく
明治22年頃(c.1889) 35.4x23.8cm.
刷良 保存良 極少汚 少トリム



271 周延 ¥23,000
東風俗福つくし ふくりん
明治22年頃(c.1889) 35.4x24.6cm.
刷良 保存良 極少汚 極少シミ 少トリム



272 周延 ¥25,000
東風俗福つくし 有ふく
明治22年頃(c.1889) 35.3x23.8cm.
刷良 保存良 極少汚 少トリム



273 周延 ¥70,000
秋園菊花の盛 3枚続
明治20年(1887) 各約35.4x23.8cm.
刷良 保存良 端折 少トリム



274 周延 ¥45,000
貴顕之別邸 3枚続
明治23年(1890) 各約35.6x23.5cm.
刷良 保存良 薄裏打



275 年方 ¥20,000
三十六佳撰 辻君
明治24年(1891) 37.1x25cm.
刷良 保存良 極少墨汚



276 年方
三十六佳撰 卯月
明治25年(1892) 37x25.2cm.
刷良 保存良 左縁極少シミ

¥20,000



277 鏑木清方
「金色夜叉」前合本
明治31年(1898) 30.5x22cm.
刷極良 保存良

¥45,000



278 春亭
役者見立忠臣蔵 四段目
文化7年頃(c.1810) 23.7x35.3cm.
刷良 保存良 極少汚

¥38,000



279 豊国
松本幸四郎 市川団十郎 2枚続
文化末頃(c.1815) 各約39.5x26.8cm.
刷良 保存良 極少汚 極少虫穴

¥85,000



280 豊国三代
「源氏模様娘雛形」 3枚続
嘉永頃(c.1848) 各約36x25cm.
刷良 保存良 極少虫穴補修 薄裏打

¥40,000



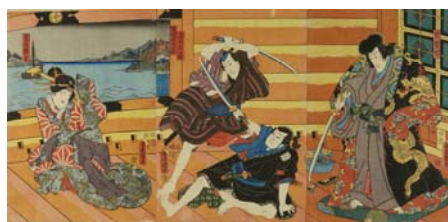
281 豊国三代
大星由良之助 大星力弥 大星妻お石 3枚続
嘉永頃(c.1848) 各約36.9x226cm.
刷良 保存良 極少汚 縁少傷 綴穴

¥35,000



282 豊国三代
忠臣蔵 七段目 3枚続
嘉永5年(1852) 各約36.3x25.1cm.
刷良 保存良

¥90,000



283 豊国三代
「児雷也豪傑譚語」 3枚続
嘉永5年(1852) 各約36x25.1cm.
刷良 保存良 極少虫穴補修

¥25,000



284 豊国三代
花競手習鏡ノ内 時平
嘉永5年(1852) 37.3x25.8cm.
刷良 保存良

¥25,000



285 豊国三代
花競手習鏡ノ内 松王丸
嘉永5年(1852) 37.8x26cm.
刷良 保存良 極少汚

¥25,000



286 豊国三代
東海道五十三次ノ内 藤枝 駒沢 嶋田 朝
かほ
安政4年(1857) 37.5x26cm.
刷良 保存良 極少汚

¥18,000



287 豊国三代
東海道五十三次ノ内 舞坂 春月尼 荒井
天竺徳兵衛
安政4年(1857) 37x25.7cm.
刷良 保存良 極少ヤケ 極少虫穴

¥15,000



288 豊国三代
「関取千両幟」 3枚続
安政5年(1858) 各約36.3x24.3cm.
刷良 保存良 極少汚 極少傷

¥28,000



289 豊国三代
今様押絵鏡 斉藤内蔵之介 八世片岡仁左
衛門(我童)
万延元年(1860) 39x26.2cm.
刷極良 保存良 極少シミ

¥50,000



290 国周
いかけまつ 梅幸
万延元年(1860) 35.8x23.9cm.
刷良 保存良 極少汚 薄裏打

¥40,000



291 国周
市川団十郎 坂本のさとへ出花や銘茶筒
2枚続
明治4年頃(c.1871) 各約36.7x25.3cm.
刷良 保存良 極少汚 角少破

¥22,000



292 国周
「浪花渦入江大塩」 3枚続
明治5年(1872) 各約34.9x23.8cm.
刷良 保存良 極少汚 極少シミ 裏打

¥12,000



293 国周
東京廻花 国周漫画 三 尾上菊五郎 於
岩
明治5年(1872) 35.8x24.7cm.
刷良 保存良 左端折 薄裏打

¥40,000



294 国周 ¥35,000
一谷嫩軍記 3枚続
明治28年(1895) 各約35.5x23.5cm.
刷良 保存良 少シミ 薄裏打



295 国周 ¥18,000
新富座新狂言 板倉屋内々場 3枚続
明治28年(1895) 各約35.6x23.5cm.
刷良 保存良 極少汚 極少シミ 薄裏打



296 周重 ¥13,000
「音響千成瓢」 3枚続
明治9年(1876) 各約35.6x24.2cm.
刷良 保存良



297 周重 ¥18,000
妹背山俳優見立 3枚続
明治14年(1881) 各約35.1x23.2cm.
刷良 保存良 中図極少シミ



298 国政四代 ¥18,000
「高座開復警美談」 3枚続
明治19年(1886) 各約37.3x25cm.
刷良 保存良 少酸化傷 弱中折



299 豊斎 ¥12,000
歌舞伎座新狂言「女侠客駒形おせん」 3枚続
明治36年(1903) 各約36.2x23.4cm.
刷良 保存良 極少汚 極少シミ 薄裏打



300 国貞 ¥80,000
真田与一義貞 縦2枚続の内1枚
文化8年(1811) 38.8x26.5cm.
刷良 保存良 少汚 少傷 極少虫穴及破補修



301 芳藤 ¥80,000
摂州一の谷鶴越ヨリ義経平家ヲ攻ル図 3枚続
明治20年(1887) 各約36.6x24.8cm.
刷良 保存良 縁極少シミ



302 広重 ¥25,000
曾我物語図会 十郎祐成 五郎時致
弘化頃(c.1844) 37x25.1cm.
刷良 保存良



303 広重 ¥25,000
曾我物語図会 十郎祐成 工藤祐経
弘化頃(c.1844) 37x25.2cm.
刷良 保存良



304 年信 ¥35,000
日本史略図 佐野源左衛門尉常世
明治10年頃(c.1877) 36.3x24.5cm.
刷良 保存良 極少汚 極少虫穴



305 芳年 ¥50,000
月百姿 三日月の頃より侍し今宵哉 翁
明治24年(1891) 35x23.6cm.
刷良 保存良 極少退色 極少汚 少トリム



306 芳年 ¥95,000
新撰東錦絵 大久保彦左衛門盤登城之図
2枚続
明治19年(1886) 各約35.5x24.5cm.
刷良 保存良



307 芳年 ¥35,000
美立七曜星 燈台の火 権典侍 正五位柳
原愛子
明治11年(1878) 35.1x24.7cm.
刷良 保存良 極少汚 極少傷 極少虫穴



308 芳年 ¥45,000
見立多以尽 いっぱくのみたい
明治11年(1878) 36.5x25.2cm.
刷良 保存良 右縁極少虫穴 薄裏打



309 芳年 ¥95,000
風俗三十二相 暗そう 明治年間妻君の風
俗
明治21年(1888) 35.1x23.8cm.
刷良 保存良 極少汚 トリム



310 芳年 ¥60,000
大日本名将鑑 御曹子牛若丸後伊予守源
義経 西塔武蔵坊弁慶
明治11年(1878) 36.9x24.5cm.
刷良 保存良



311 芳年 ¥58,000
大日本名将鑑 最明寺時頼入道
明治11年(1878) 36.5x24.5cm.
刷良 保存良 極少汚



312 芳年 ¥60,000
大日本名将鑑 上杉輝虎入道謙信
明治11年(1878) 37x24.7cm.
刷良 保存良



313 芳年 ¥55,000
大日本名将鑑 源義光
明治12年(1879) 36.6x24.4cm.
刷良 保存良



314 芳年 ¥60,000
大日本名将鑑 北条氏泰
明治12年(1879) 37.4x24.8cm.
刷良 保存良 極少汚 極少シミ



315 芳年 ¥60,000
大日本名将鑑 神武天皇
明治13年(1880) 36.8x24.8cm.
刷良 保存極良



316 芳年 ¥98,000
芳年武者无類 悪七兵衛景清 三保谷四郎
国俊
明治19年(1886) 35.6x24.4cm.
刷極良 保存良 少トリム 左縁折



317 芳年 ¥18,000
鹿児島戦争之図 3枚続
明治10年頃(c.1877) 各約36.1x24cm.
刷良 保存良 極少虫穴 一部上角極少破



318 芳年 ¥45,000
鹿児島電報 雙雄血戦之図 3枚続
明治10年(1877) 各約36.8x25.5cm.
刷良 保存良 一部角少傷



319 芳年 ¥55,000
鹿児島征討記之内 熊本城ヨリ諸所戦争之
図 3枚続
明治10年(1877) 各約36.2x24.2cm.
刷良 保存良 少虫穴



320 広重三代 ¥17,000
吹上御庭内釣橋之遠景各隊整列之図 3
枚続
明治10年(1877) 各約36.9x25cm.
刷並 保存良



321 銀光 ¥12,000
鹿兒島新聞 二俣夜襲ノ図 3枚続
明治10年(1877) 各約35.3x23.8cm.
刷良 保存良 極少汚 極少ヤケ 折 裏打



322 清親 ¥22,000
鹿兒島征討戦記 3枚続
明治10年(1877) 各約35.5x24cm.
刷良 保存良 少汚 少シミ 少傷



323 清親 ¥15,000
鹿兒島英勇伝 桐野利秋
明治10年(1877) 34.5x23.4cm.
刷良 保存良 少汚 トリム 裏打に墨下絵



324 清親 ¥15,000
鹿兒島英勇伝 大山綱良
明治10年(1877) 34.6x23.7cm.
刷良 保存良 極少汚 トリム 裏打に墨下
絵



325 清親 ¥15,000
鹿兒島英勇伝 篠原国幹
明治10年(1877) 34.6x23.3cm.
刷良 保存良 極少汚 トリム 裏打に墨下
絵



326 清親 ¥25,000
鹿兒島英勇伝 西郷隆盛
明治10年(1877) 36x24.1cm.
刷良 保存良 極少汚 トリム



327 清親 ¥18,000
鹿兒島英勇伝 西郷隆盛
明治10年(1877) 34.5x23.7cm.
刷良 保存良 極少汚 トリム 裏打に墨下
絵



328 貞信 ¥12,000
鹿兒島県人名録 西郷隆盛
明治10年(1877) 25x18.5cm.
刷良 保存良



329 貞信 ¥9,000
鹿兒島県人名録 村田新八
明治10年(1877) 25x18.5cm.
刷良 保存良



330 貞信
鹿兒島県人名録 大岡綱良
明治10年(1877) 25x18.5cm.
刷良 保存良



¥9,000 331 貞信
鹿兒島県人名録 児玉八ノ進
明治10年(1877) 25x18.5cm.
刷良 保存良 極少汚



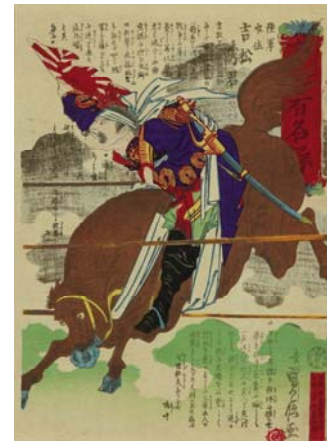
¥9,000 332 貞信
鹿兒島県人名録 西郷小平
明治10年(1877) 25x18.5cm.
刷良 保存良 極少シミ



333 貞信
鹿兒島県人名録 別府伸助
明治10年(1877) 25x18.5cm.
刷良 保存良



¥10,000 334 貞信
鹿兒島県人名録 淵辺高照
明治10年(1877) 25x18.5cm.
刷良 保存良



¥9,000 335 貞信
鹿兒島県人名録 陸軍少佐吉松秀君
明治10年(1877) 25x18.5cm.
刷良 保存良



336 芳幾
東京日々新聞 3号
明治7年(1874) 36x24.3cm.
刷良 保存良 極少汚 極少裏打残



¥18,000 337 芳幾
東京日々新聞 3号
明治7年(1874) 36.6x24.8cm.
刷良 保存良



¥20,000 338 芳幾
東京日々新聞 111号
明治7年(1874) 35.8x23.8cm.
刷良 保存良 極少糊跡



339 芳幾
東京日々新聞 111号
明治7年(1874) 37x25cm.
刷良 保存良 左下極少破穴



340 芳幾
東京日々新聞 185号
明治7年(1874) 35.7x24.2cm.
刷良 保存良 縁極少傷 少裏打残



341 芳幾
東京日々新聞 185号
明治7年(1874) 36.9x25cm.
刷良 保存良



342 芳幾
東京日々新聞 220号
明治7年(1874) 35x23.5cm.
刷良 保存良



343 芳幾
東京日々新聞 220号
明治7年(1874) 36.4x24.5cm.
刷良 保存良 極少シミ



344 芳幾
東京日々新聞 392号
明治7年(1874) 36.6x24.6cm.
刷良 保存良



345 芳幾
東京日々新聞 428号
明治7年(1874) 36.6x24.7cm.
刷良 保存良



346 芳幾
東京日々新聞 490号
明治7年(1874) 36.5x25.2cm.
刷良 保存良



347 芳幾
東京日々新聞 512号
明治7年(1874) 35x23.7cm.
刷良 保存良



348 芳幾
東京日々新聞 512号
明治7年(1874) 37.1x24.9cm.
刷良 保存良

¥20,000



349 芳幾
東京日々新聞 592号
明治7年(1874) 35.8x25.2cm.
刷良 保存良

¥20,000



350 芳幾
東京日々新聞 656号
明治7年(1874) 36.4x24.9cm.
刷良 保存良

¥20,000



351 芳幾
東京日々新聞 687号
明治7年(1874) 37.1x25cm.
刷良 保存良 極少穴

¥22,000



352 芳幾
東京日々新聞 694号
明治7年(1874) 36.1x24.1cm.
刷良 保存良

¥18,000



353 芳幾
東京日々新聞 694号
明治7年(1874) 36.6x25cm.
刷良 保存良 極少ヤケ

¥20,000



354 芳幾
東京日々新聞 708号
明治7年(1874) 36.7x24.9cm.
刷良 保存良

¥22,000



355 芳幾
東京日々新聞 723号
明治7年(1874) 36.2x24.4cm.
刷良 保存良 極少汚 極少シミ 縁極少傷

¥18,000



356 芳幾
東京日々新聞 726号
明治7年(1874) 36.3x24.8cm.
刷良 保存良

¥20,000



357 芳幾
東京日々新聞 742号
明治7年(1874) 35.7x24.2cm.
刷良 保存良

¥18,000



358 芳幾
東京日々新聞 742号
明治7年(1874) 36.6x25cm.
刷良 保存良 左下角極少欠

¥20,000



359 芳幾
東京日々新聞 813号
明治7年(1874) 36.9x24.8cm.
刷良 保存良

¥25,000



360 芳幾
東京日々新聞 822号
明治7年(1874) 36.5x25.3cm.
刷良 保存良

¥22,000



361 芳幾
東京日々新聞 832号
明治7年(1874) 36.3x24.6cm.
刷良 保存良

¥22,000



362 芳幾
東京日々新聞 833号
明治7年(1874) 36.5x25cm.
刷良 保存良

¥25,000



363 芳幾
東京日々新聞 851号
明治7年(1874) 36.5x24.6cm.
刷良 保存良

¥22,000



364 芳幾
東京日々新聞 856号
明治7年(1874) 37x24.8cm.
刷良 保存良

¥20,000



365 芳幾
東京日々新聞 865号
明治7年(1874) 36.7x24.5cm.
刷良 保存良 極少欠

¥20,000



366 芳幾
東京日々新聞 873号
明治7年(1874) 36.5x24.7cm.
刷良 保存良



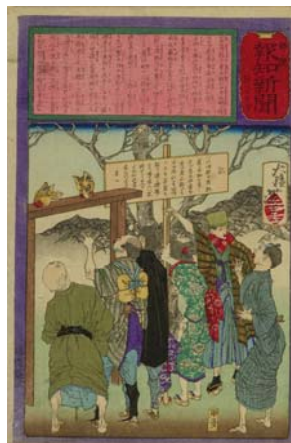
367 芳幾
東京日々新聞 877号
明治7年(1874) 37x24.9cm.
刷良 保存良



368 芳年
郵便報知新聞 第452号
明治8年(1875) 36.3x24.4cm.
刷良 保存良 少汚 左縁少傷 綴穴補修



369 芳年
郵便報知新聞 第568号
明治8年(1875) 35.5x24.3cm.
刷良 保存良 右縁にピン穴



370 芳年
郵便報知新聞 第628号
明治8年(1875) 36.5x24.4cm.
刷良 保存良 極少汚 綴穴補修



371 芳年
郵便報知新聞 第645号
明治8年(1875) 35.2x24.7cm.
刷良 保存良



372 芳年
郵便報知新聞 第647号
明治8年(1875) 36.9x24.7cm.
刷良 保存良 極少汚 上角少テープシミ
縁少傷



373 国貞
神力国吉(長野)
天保7年(1836) 36.9x25.2cm.
刷良 保存良 少汚 少傷 少虫穴補修



374 豊国三代
西ノ方土俵入之図 3枚続
弘化3年(1846) 各約37.6x26cm.
刷良 保存良 少虫穴補修



375 豊国三代
雲龍久吉(福岡)
嘉永6年(1853) 36.5x25.3cm.
刷良 保存良 極少シミ 極少虫穴

¥36,000



376 豊国三代
荒熊力之助(宮城)
嘉永6年(1853) 37.2x25.5cm.
刷良 保存良 極少虫穴

¥36,000



377 芳藤
横浜譽勝負附
文久元年(1861) 37.1x25.2cm.
刷良 保存良 極少虫穴補修 弱折 右上
角少破補修

¥60,000



378 芳虎
小人国
文久頃(1861) 36.1x24.5cm.
刷良 保存良 極少汚 綴穴補修

¥85,000



379 豊広
大勢の中へ一本初松魚
文化頃(c.1804) 34x7.3cm.
刷良 保存良 極少虫穴

¥25,000



380 豊広
猿回し
文化頃(c.1804) 28.1x7.38c.
刷良 保存並 汚 破補修

¥10,000



381 豊広
門の雪
文化頃(c.1804) 34.2x7.3cm.
刷良 保存良 少虫穴

¥18,000



382 広重
鬼の念仏
天保頃(c.1830) 22.5x16.4cm.
刷良 保存良 少シミ 少ヤケ 少傷 少虫
穴

¥18,000



383 広重
諸芸稽古図会 よみもの はりしごと 茶の
湯 うたい
天保末頃(c.1840) 25.5x35.8cm.
刷良 保存良 少シミ 切れ補修 薄裏打

¥55,000



384 広重 ¥45,000
童戯武者尽 源三位頼政の猿引 平敦盛の
夜蕎麦売り
安政元年(1854) 35.2x24.9cm.
刷良 保存良 少汚 極少虫穴補修 右端
折 薄裏打



385 国芳 ¥80,000
狸のあみ打 狸のおうらい
弘化頃(c.1844) 36.5x24.4cm.
刷良 保存良 極少汚 極少シミ 少虫穴補
修 薄裏打



386 芳盛 ¥90,000
流行麻疹十二日の間養生の事
文久2年(1862) 36.8x25.5cm.
刷良 保存良 弱中折



387 国周 ¥70,000
麻疹元服図 2枚続
文久2年(1862) 各約36.5x25.8cm.
刷良 保存良 極少汚 極少虫穴 綴穴



388 芳艶 ¥80,000
麻疹飲物養性
文久2年(1862) 37.1x25.4cm.
刷良 保存良 極少汚 極少シミ



389 芳虎 ¥75,000
道外三人上戸
文久2年(1862) 37.4x25.5cm.
刷良 保存良 極少傷 中折



390 芳豊 ¥75,000
麻疹まじないの弁
文久2年(1862) 37.2x25.2cm.
刷良 保存良 少シミ 少ヤケ 少傷



391 幾英 ¥95,000
志ん板消防組操出し 火がらりのづ
明治12年(1879) 36.2x24cm.
刷良 保存良 少汚 極少虫穴



392 邦年 ¥55,000
神田御祭礼 3枚続
明治17年(1884) 各約34.6x23.3cm.
刷良 保存良 少シミ 少傷 極少虫補修
薄裏打 少トリム



393 暁斎
二月八日 金性の人有卦二入 豎2枚続
明治21年(1888) 各約37x25cm.
刷良 保存良 極少汚



394 清親
教育いろは談話 へ 下手の横好
明治30年(1897) 36.4x24.8cm.
刷良 保存良 少シミ



395 清親
百尺崖所攻撃之図 3枚続
明治27年(1894) 各約35.6x23.1cm.
刷良 保存良 極少シミ 極少ヤケ 薄裏打



396 清親
雪ヲ冒シテ我軍威海衛之堅壘ヲ抜ク図 3枚続
明治27年(1894) 各約35.6x23.5cm.
刷良 保存良 少ヤケ 薄裏打



397 米作
台湾三角湧ニ於テ土賊 近衛輸送隊ヲ惨撃スル図 3枚続
明治28年(1895) 各約37.6x25cm.
刷良 保存良 周囲極少汚及極少シミ



398 吉田初三郎
名古屋城
昭和19年(1944) 16.8x21.3cm.
刷良 保存良



399 小原古邨
無題 (田植)
明治末頃(c.1911) 26.6x12.5cm.
刷極良 保存極良



400 小原古邨
秋草に鶉
明治末頃(c.1900) 24.5x25.2cm.
刷良 保存良 極少シミ



401 小原古邨
白鷺
明治末頃(c.1910) 23.9x25.1cm.
刷良 保存良 極少シミ



402 小原古邨 ¥50,000
鹿
明治末頃(c.1910) 24x24.3cm.
刷良 保存良 極少シミ



403 小原古邨 ¥60,000
猿
明治末頃(c.1910) 24x25cm.
刷良 保存良 極少シミ



404 小原古邨 ¥50,000
杜鵑
明治末頃(c.1910) 23.7x24.7cm.
刷良 保存良 極少シミ



405 昇雲 ¥95,000
雪中雉
明治末頃(c.1900) 34.3x18.4cm.
刷良 保存良 少ヤケ 少トリム



406 春仙 ¥90,000
七世坂東三津五郎「槍奴」
昭和27年(1951) 41x28.4cm.
刷極良 保存極良



407 春仙 ¥50,000
二世中村時蔵「樽屋おせん」
昭和30年(1955) 39.8x26.5cm.
刷良 保存良 極少シミ タイトル、役者名、
刊行年は筆書



408 北野恒富 ¥40,000
「冥土の飛脚」 梅川
大正12年(1923) 42x29.4cm.
刷良 保存良 極少シミ 極少ヤケ



409 伊東深水 ¥45,000
牡丹
昭和30年代(c.1950) 27x38.8cm.
刷良 保存良



410 伊東深水 ¥50,000
美人と時計
昭和39年(1964) 35.5x27.2cm.
刷良 保存良

- 1 HOKUSAI: *Bushu, Senju* (Senju, Musashi Province), from *Fugaku sanjurokkei* (Thirty-six views of Mount Fuji), c.1831--Good impression and condition, very slightly soiled and stained, a few minor wormholes repaired, slight damage along lower edge repaired
25.4x37.6cm. ¥1,600,000
- 2 HOKUSAI: Bird's-eye view map of famous places of the Tokaido, diptych, 1818--Good impression and condition, some minute wormholes
43x57cm. overall ¥1,100,000
- 3 EISHO: *Kaiho ichiran hana mo miyakoji* (Treasure in a pocket, flowery road to the capital), twelve sheets, complete, c.1818--Good impressions and condition, first sheet slightly soiled and worn, others very slightly soiled and worn, lightly backed
19x52cm. each approx. ¥500,000
- 4 HIROSHIGE: Hiratsuka, from *Tokaido gojusan tsugi no uchi* (the Fifty-three stations of the Tokaido), c.1833--Fine impression and condition
25.7x38.1cm. ¥1,000,000
- 5 HIROSHIGE: Oiso, from the same series as above, c.1833--Good impression and condition, very slightly soiled, some minor wormholes repaired, some margins narrow
25x36.1cm. ¥160,000
- 6 HIROSHIGE: Odawara, Sakawa River, from the same series as above, c.1833--Fine impression, good condition, slightly soiled, some minute wormholes repaired
24.5x36.7cm. ¥450,000
- 7 HIROSHIGE: Hara, from the same series as above, c.1833--Fine impression and condition
25.2x37.8cm. ¥3,800,000
- 8 HIROSHIGE: Kambara, from the same series as above, c.1832--Good impression and condition, slightly soiled and toned, small repairs to ends of centerfold
24.5x36.9cm. ¥2,500,000
- 9 HIROSHIGE: Fuchu, from the same series as above, c.1833--Good impression and condition, very slightly soiled, slightly stained, some minor tear along edges repaired
24.2x36.6cm. ¥120,000
- 10 HIROSHIGE: *Kanaya, Oigawa Engan* (Totomi Bank of Oi River), from the same series as above, c.1833--Good impression and condition, very slightly soiled, some minor wormholes repaired, some margins narrow, centerfold
25.2x35.8cm. ¥250,000
- 11 HIROSHIGE: Arai, from the same series as above, c.1853--Good impressions and condition, a minute ink smudge, a minor cut on upper left, some margins narrow, centerfold
24.3x36.7cm. ¥100,000
- 12 HIROSHIGE: *Tsuchiyama, Suzukayama uchu no zu* (View of the rain in Mount Suzuka), from *Tokaido gojusan tsugi no uchi* (the fifty-three stations of the Tokaido), (the 'Gyosho' Tokaido), published by Yamadaya, c.1840--Good impression and condition, a minor wormhole repair in right margin
22.3x34.2cm. ¥150,000
- 13 HIROSHIGE: Kawasaki, from *Gojusan tsugi meisho zue* (Pictures of famous places of the fifty-three stations), (the 'Upright' Tokaido), 1855--Good impression and condition, very slightly faded, margins very slightly soiled
37.8x25.5cm. ¥300,000
- 14 HIROSHIGE: Odawara, from the same series as above, 1855--Good impression and condition, very slightly soiled, a pinhole worming in right margin
37.6x25.5cm. ¥160,000
- 15 HIROSHIGE: Kambara, from the same series as above, 1855--Good impression and condition, margins very slightly soiled, very slightly soiled on left, a few minute wormholes
37.7x25.5cm. ¥180,000
- 16 HIROSHIGE: Okitsu, from the same series as above, 1855--Good impression and condition, a pinhole worming
37.8x25.5cm. ¥140,000
- 17 HIROSHIGE: *Inaka dosha Edo kembutsu* (Travelers sightseeing Edo), subtitled Nihonbashi, from Tokaido gojusan tsugi saiken zue (Details of the fifty-three stations of the Tokaido), c.1844--Good impression and condition, very slightly soiled, stained, and worn, a few minute wormholes, ownership seal and sticker on verso
36.1x25.2cm. ¥160,000
- 18 HIROSHIGE: *Sokenseki* (Double-sword rock), Bonoura Bay, Satsuma Province, from *Rokujuyoshu meisho zue* (Pictures of famous places of the sixty-odd provinces), 1856--Good impression and condition, very slight ink smudge
36.3x24.7cm. ¥250,000
- 19 HIROSHIGE: Ryogoku Bridge and Motoyanagi Bridge, from *Toto meisho no uchi* (Famous places of the eastern capital), c.1839--Good impression and condition, very slightly soiled and toned, a pinhole worming
33.8x11cm. ¥100,000
- 20 HIROSHIGE: Kagurazaka Hill, Ushigome, from *Toto meisho saka tukushi no uchi* (Famous places of the eastern capital, collection of hills), c.1830--Good impression and condition, very slightly soiled and toned, minor damage along edges repaired
25.8x37.3cm. ¥220,000
- 21 HIROSHIGE: Aoi Hill, from the same series as above, c.1830--Good impression and condition, very slightly soiled and toned, a few minute worming in margins repaired
37.5x25.4cm. ¥220,000
- 22 HIROSHIGE: Yamashitacho, Hibiya, outside Sakurada Gate, from *Meisho Edo hyakkei* (One hundred views of famous places of Edo), 1857--Good impression and condition, very slightly soiled and stained, some margins narrow
35.2x23.5cm. ¥250,000
- 23 HIROSHIGE: *Minami Shinagawa Samezu kaigan* (Samezu Shore, South Shinagawa), from the same series as above, 1857--Good impression and condition, binding holes repaired, trace of removed backing
36.3x24.8cm. ¥250,000
- 24 HIROSHIGE: Nihonbashi and Edobashi, from the same series as above, 1857--Fine impression, good condition, margins very slightly soiled
37x25.3cm. ¥2,000,000
- 25 KUNIYOSHI: Tsukuda Island, from *Toto meisho* (Famous places of the eastern capital), c.1830--Good impression and condition, very slightly soiled, minor damage on corners repaired, centerfold repaired
25.2x37.5cm. ¥3,500,000
- 26 KUNIYOSHI: View of Honcho, Yokohama, triptych, 1860--Good impressions and condition
36.8x25.4cm. each approx. ¥350,000
- 27 SADAHIDE: *Yokohama koeki seiyojin nimotsu unso no zu* (View of Westerners loading trading goods at Yokohama), five sheets, 1861--Good impressions and condition, very slightly soiled and worn, some minute wormholes (some repaired)
37.3x25.3cm. each approx. ¥3,800,000
- 28 SADAHIDE: View of Tokaido between Nihonbashi and Arai, triptych, 1863--Good impressions and condition, right panel very slightly stained, slightly trimmed
34.8x24.3cm. each approx. ¥150,000
- 29 HIROSHIGE II: *Minobusan asamairi gunshu Shin-ohashi no kei* (View of crowd at Shin-ohachi Bridge, visiting Minobu Shrine exhibition), triptych, 1863--Good impressions and condition, slight damage along edges
37x25.5cm. each approx. ¥1,350,000
- 30 NAGASAKI SCHOOL: A Russian envoy Lesanov, 1804--Good impression and condition, slightly soiled and worn
46x17.5cm. ¥500,000

- 31 NAGASAKI SCHOOL: Dutch ship, c.1810--Good impression and condition
32.3x21.8cm. ¥100,000
- 32 NAGASAKI SCHOOL: Dutch banquet, c.1810--Good impression and condition
32x44.3cm. ¥150,000
- 33 NAGASAKI SCHOOL: Russian officers, c.1805--Good impression and condition, very slightly stained
31.5x22.6cm. ¥180,000
- 34 KIYOCHIKA: View of the first domestic exposition, triptych, 1877--Good impressions and condition, very slightly soiled and worn, lightly backed
36.1x24.5cm. each approx. ¥250,000
- 35 KIYOCHIKA: View of Ariakero, Imado, from *Tokyo meisho* (Famous places of Tokyo), 1879--Good impression and condition, some pinholes, a minor cut at bottom, faint centerfold
24.9x36.3cm. ¥200,000
- 36 KIYOCHIKA: Gohommatsu ame tsuki (Gohommatsu in rain under the moon), from the same series as above, varnished, 1880--Good impression and condition, very slightly soiled and toned, a few minute holes
23.4x35.5cm. ¥280,000
- 37 KIYOCHIKA: *Gohommatsu ame tsuki* (Gohommatsu in rain under the moon), from the same series as above, 1880--Good impression and condition, very slight soiling and stain in margins
24x36.4cm. ¥200,000
- 38 KIYOCHIKA: *Kudanzaka satsukiyo* (Night in May at Kudan Hill), from the same series as above, 1880--Good impression and condition, slightly soiled and toned
23x34.8cm. ¥160,000
- 39 KIYOCHIKA: Night rain at Yanagihara, from the same series as above, varnished, 1881--Good impression and condition, very slightly soiled, a few minute wormholes
24.4x36.4cm. ¥330,000
- 40 KIYOCHIKA: *Asakusa Yomise* (Night market at Asakusa), from the same series as above, 1881--Good impressions and condition, very slightly stained
24x36.3cm. ¥630,000
- 41 YOSHIKUNI: *Osaka Matsushimakaku shukka no zu* (View of fire started at the pleasure quarters of Matsushima, Osaka), from Keihan meisho zue (famous places of Kyoto and Osaka), varnished, 1885--Fine impression and condition
24.2x35.3cm. ¥800,000
- 42 HISHIKAWA MORONOBU: Scene IX of the erotic series *Hana no katarai*, c.1670--Good impression, fair condition, slightly soiled and worn, extensive restoration near edges
29.8x34.2cm. ¥250,000
- 43 HISHIKAWA MORONOBU: Scene XI of the same series as above, c.1670--Good impression, fair condition, slightly soiled and worn, extensive restoration near edges
29x34.5cm. ¥200,000
- 44 ISHIKAWA TOYONOBU: Couple making love on a moonlit terrace, c.1760--Good impression and condition
24.5x35.8cm. ¥280,000
- 45 KORYUSAI: *Hashira-e* (Pillar print) of the courtesan Michiharu and *kamuro* Midori and Tokiwa, c.1777--Good impression and condition, faded, very slightly soiled, slight crease along chain lines
67.3x11.7cm. ¥180,000
- 46 UTAMARO: Beauty hiding a letter from her lover, c.1789--Good impression and condition, faded, very slightly soiled and stained, fold line along left edge
38.5x25.3cm. ¥400,000
- 47 UTAMARO: Seven deities, seven sheets, complete, c.1789--Good impressions and condition, very slightly soiled and stained, a few minor wormholes repaired
18.5x15.5cm. each approx. ¥280,000
- 48 UTAMARO II: Beauty looking at children fighting, with a round reserve with picture of fight between Kawazu Saburo and Matano Goro, from *Baio omokage kurabe* (Comparison of Plum and Cherry), c.1818--Good impression and condition, slightly soiled and stained, a few minor wormholes repaired
35.9x23.8cm. ¥200,000
- 49 EISHI: Ox and goat, from *Kaiun nanatsume awase* (Collection of lucky zodiac pairs), c.1790--Good impression and condition, very slightly soiled, slight crease along chain lines
22.2x16.1cm. ¥160,000
- 50 EISHI: Portrait of the courtesan Shizuka of Shizutamaya, from *Seiro bijin rokkasen* (Six flowery immortals of the pleasure quarters), c.1794--Good impression and condition, very slightly toned
37.2x25.1cm. ¥1,200,000
- 51 EISHO: *Hashira-e* (Pillar print) of two beauties on a boat, c.1795--Good impression and condition, very slightly soiled and worn, a minor damage repaired
65x11.8cm. overall ¥380,000
- 52 TOYOKUNI: Beauties acting Fukurokuju and Jurojinn, left panel of a triptych illustrating seven deities, c.1790--Good impression and condition, a minor wormhole repaired
38.9x26.2cm. each approx. ¥280,000
- 53 EIZAN: Beauty holding a baby looking into a basin with goldfish, titled *Tenno gosairei no keshiki* (View of Tenno Festival), from Tosei bijin soroi (Collection of beauties of the day), 1811--Good impression and condition, slightly faded and trimmed, very slightly soiled and stained, a minor paper flaw
35.6x25.7cm. ¥160,000
- 54 EIZAN: Hawk perched on a pine branch against rising sun, vertical diptych, c.1830--Good impressions and condition, slightly toned
35x25cm. each ¥120,000
- 55 SHUNSEN: Portrait of a girl fiddling with shuttlecock, vertical diptych, c.1818--Good impressions and condition
37x24.7cm. each approx. ¥250,000
- 56 EISEN: Portrait of the courtesan Wakamurasaki of Tamaya, subtitled Asukayama, from *Keisei Edo hogaku* (Courtesans and directions of Edo), c.1830--Good impression and condition, very slightly toned, a few minute wormholes, faint crease on center
38.2x25.8cm. ¥120,000
- 57 EISEN: Standing beauty in snow carrying an umbrella, vertical diptych, c.1829--Fine impression and condition
37x25.2cm. each approx. ¥280,000
- 58 EISEN: *Kakae geisha* (Retained geisha), from *Jisei bijo kurabe* (Comparison of modern beauties), c.1818--Good impression and condition, very slightly soiled, slightly stained and toned, small tape residue on verso
38x26.2cm. ¥100,000
- 59 TOYOKUNI II: Standing beauty on a bench, titled *Imayo sugata* (Modern looking), with a fan shaped reserve with comic illustration of a bat performing kabuki scene of *Shibaraku*, c.1830--Good impression and condition, very slightly soiled, a minor wormhole repaired
38.2x26.3cm. ¥110,000
- 60 KUNISADA: *Edo Shin-Yoshiwara hassaku shiromuku no zu* (Courtesans wearing white robe at the first day of eighth month at Shin-Yoshiwara pleasure quarters), triptych, c.1830--Good impressions and condition, a few minute wormholes repaired
38.5x26.2cm. each approx. ¥1,800,000

- 61 KUNISADA: *Tojaku kidori* (Woman acting the actor Iwai Tojaku), from *Shimpan nishiki-e tosei bijin awase* (Newly published, collection on modern beauties), c.1815--Good impression and condition, slightly soiled and stained, a few pinhole wormings
39x26cm. ¥100,000
- 62 KUNISADA: Standing beauty by a palanquin, from *Tosei nana komachi* (Modern seven episodes of Ono no Komachi), c.1830--Good impression and condition, very slightly soiled
38.2x26.2cm. ¥200,000
- 63 TOYOKUNI III: Beauty holding a model of a boat from *Atsurae some tosei shima* (Fashionable striped fabrics made to order), the figure is also holding a round fan with a view of Mount Asama, signed *Hiroshige ga*, c.1844--Good impression and condition, very slightly soiled, a minute wormhole repaired
35.5x25cm. ¥380,000
- 64 TOYOKUNI III: View of cherry blossoms behind Sensoji Temple, triptych, 1852--Good impressions and condition, very slightly soiled, minute wormholes
35.8x24.6cm. each approx. ¥120,000
- 65 TOYOKUNI III: Mitsuiji and beauties in an interior overlooking plum garden, triptych, 1852--Good impressions and condition, some edges paper thinned, faint vertical fold lines
36.6x25.1cm. each approx. ¥160,000
- 66 TOYOKUNI III: Actors standing before various plants, titled *Aki* (Autumn), from *Shiki hana kurabe* (Comparison of flower of four seasons), triptych, 1853--Good impressions and condition, very slightly soiled, binding holes repaired
35.2x24.5cm. each approx. ¥250,000
- 67 TOYOKUNI III: *Uchiwa-e* (fan print) of a beauty, titled *Imayo cha no keiko* (Modern practice of tea ceremony), 1856--Good impression and condition, very slightly soiled
22.2x29.4cm. ¥230,000
- 68 TOYOKUNI III: Beauties before plum three in the night, triptych, 1858--Good impressions and condition, fold line along edges, tape residue on verso
35.8x25.3cm. each approx. ¥120,000
- 69 KUNIYOSHI: *Shochu no yudachi* (Summer evening shower), triptych, c.1848--Good impressions and condition, two minute wormhole repairs on right panel
37.3x25.7cm. each approx. ¥1,600,000
- 70 KUNIYOSHI: Fan print illustrating a beauty washing a bowl after brushing her teeth, titled *Shakuyaku* (Peony), from *Hana shikishi* (Floral shikishi card), c.1845--Good impression and condition, very slightly stained, a few minor wormholes repaired
22.2x30.2cm. ¥2,500,000
- 71 KUNIYOSHI: *Kore ga kitai* (Wish to wear this fabric), Trout fishing of Jintsu River, Hida Province, from *Sankai medetai zue* (Celebrated products of mountains and sea), 1852--Good impression and condition, very slightly soiled
36.7x25.2cm. ¥150,000
- 72 CHIKANOBU: *Baien shoka zu* (Chorus in a plum garden), triptych, 1887--Good impressions and condition, very slightly soiled and worn along edges
36.8x24.1cm. each approx. ¥280,000
- 73 CHIKANOBU: Boys floating boats on a pond, triptych, 1887--Good impressions and condition, slightly soiled and toned, faint creases, slight damage on edges and corners
36.5x24.5cm. each approx. ¥150,000
- 74 CHIKANOBU: *Shogaku shoka no ryakuzu* (Abbreviated scene of elementary chorus), triptych, 1887--Good impressions and condition
36.5x25.5cm. each approx. ¥600,000
- 75 CHIKANOBU: *Azuma* (the east), twenty-four sheets, complete, with table of contents, 1896--Good impressions and condition
35.5x24cm. ¥450,000
- 76 TOSHIKATA: *Miyako no nishiki* (Brocade of the capital), twelve sheets, complete with table of contents, c.1890--Fine impressions and condition
20.8x29.6cm. each ¥150,000
- 77 TOSHIKATA: Complete set of *Chanoyu nichinichi gusa* (The day of tea ceremony), fifteen sheets and a table of contents, 1896--Fine impressions and condition
21.8x32.4cm. each ¥250,000
- 78 TOYOKUNI: Portrait of actor Bando Mitsugoro in the role of Ashikaga Yorikane and Ichikawa Komazo in the role of the ghost of courtesan Takao, c.1790--Fine impression and condition except very slight soiling and trimming
37.6x24.8cm. ¥500,000
- 79 KUNISADA: Scene of the kabuki performance, *Satomi hakenden* (Legend of eight dog soldiers), from *Haiyu Suikoden goketsu hyakuhachinin no hotori* (One hundred eight heroic acts of Suikoden), diptych, c.1830--Good impressions and condition, very slightly soiled, lightly backed
36.3x24.5cm. each approx. ¥120,000
- 80 TOYOKUNI III: Scene of gathering of actor Ichikawa Danjuro family, triptych, 1858--Good impressions and condition, very slightly soiled, minor wormholes repaired
35.8x24.7cm. each approx. ¥500,000
- 81 TOYOKUNI III: Scenes of the kabuki performance *Kanadehon Chushingura*, twelve sheets, complete, 1854--Good impressions and condition, very slightly soiled and/or stained, some corners very slightly damaged
25.3x37.6cm. each approx. ¥280,000
- 82 TOYOKUNI III: Kikuchi Komumaru, from *Toyokuni kigo Kijutsu kurabe* (Comparison of witchcrafts, drawn by Toyokuni), printed on a thick, luxury paper, 1863--Fine impression and condition
36x25.8cm. ¥180,000
- 83 KUNIAKI: Portrait of actors, triptych, 1862--Good impressions and condition, very slightly soiled, very slightly damaged along some edges
35.5x25cm. each approx. ¥400,000
- 84 YOSHITOSHI: Uncut sheets of the kabuki performance *Kanadehon Chushingura*, six sheets, complete, 1860--Good impressions and condition, very slightly soiled, minor tear on corners restored, slightly trimmed
36.1x23.9cm. each approx. ¥250,000
- 85 KUNICHIKA: Neck tug-of-war of celebrated actors, triptych, 1876--Good impressions and condition, slightly stained and worn, some minute wormholes
36.5x24.6cm. each approx. ¥120,000
- 86 KUNICHIKA: Heroes of the *Shiranui monogatari*, eight sheets, 1879--Good impressions and condition, one sheet with a minute hole, one sheet with damage by removed backing
36.2x24.3cm. each approx. ¥250,000
- 87 KUNIYOSHI: Hakumenrokun Teitenja (Zheng Tianshou), from *Tsuzoku suikoden goketsu hyaku hachinin no uchi* (One hundred eight heroes of the popularized Suikoden), c.1827--Good impression and condition, very slightly soiled, some minor wormholes repaired, slightly trimmed
37.2x25.1cm. ¥550,000
- 88 KUNIYOSHI: Temmokusho Hoki (Peng Qi), from the same series as above, c.1827--Good impression and condition, very slightly soiled, a few minor wormholes repaired, slightly trimmed
37.1x25.1cm. ¥300,000
- 89 KUNIYOSHI: Sotoki Sosei (Cao Zheng), from the same series as above, c.1827--Good impression and condition, slightly soiled, a few minor wormholes repaired
38.7x26.3cm. ¥480,000
- 90 KUNIYOSHI: Muramatsu Sandayu Takanao, from *Seichu gishi shozo* (Portraits of Loyal retainers), 1852--Good impression and condition, very slightly soiled, binding holes
35.7x25.1cm. ¥200,000

- 91 KUNIYOSHI: Yato Yomoshichi Norikane, from the same series as above, 1852--Good impression and condition, very slightly soiled, binding holes
35.7x25.1cm. ¥200,000
- 92 KORYUSAI: Taira no Noritsune committing suicide holding enemies at the battle of Dannoura, c.1781--Good impression and condition, faded, very slightly soiled, stained, and worn
26.5x19.4cm. ¥100,000
- 93 SHUNTEI: Hatakeyama Shigetada and Kagekiyo, diptych, c.1804--Good impressions and condition, slightly soiled, binding holes
36.5x25.5cm. each approx. ¥150,000
- 94 KUNISADA: Prince Shana (Minamoto no Yoshitsune) being trained at Sojogatani in Mount Kurama, triptych, c.1830--Good impressions and condition, slightly soiled and worn, some minor wormholes repaired
37x25.1cm. each approx. ¥120,000
- 95 YOSHIFUJI: Duel between Iami Kanehira and Ishida Tamehisa, at Kiso Yoshinaka's battle at Awazu, triptych, c.1844--Good impressions and condition, a few minor wormholes repaired
36.5x25cm. each approx. ¥250,000
- 96 SADAHIDE: View of the battle of Dannoura, triptych, 1864--Good impressions and condition, very slightly soiled and stained, horizontal fold lines
36.5x25.2cm. each approx. ¥120,000
- 97 KUNIHIDE: Taira no Tomomori drawing himself by tying himself to an anker after failing revenge for his master, titled *Chu* (Loyalty), from *Shinsen meiyō kagami* (Newly selected mirror of honor), 1896--Good impressions and condition
36.9x25cm. each approx. ¥130,000
- 98 YOSHITORA: Night attack at Horikawa mansion, triptych, 1860--Good impressions and condition
35.7x24.9cm. each approx. ¥130,000
- 99 YOSHITORA: Priest Benkei reading Kanjincho at Aatka Gate, triptych, 1853--Fine impressions, good condition, a few pinhole worming
37.5x25.7cm. each approx. ¥120,000
- 100 YOSHITORA: Battle of Hyogo, scene of Homma Saburo Shigeuji's long shot of his arrow, triptych, 1860--Good impressions and condition, minor ink soiling on verso on center panel
35.8x24.6cm. each approx. ¥180,000
- 101 KIYOCHIKA: Battle of Daiju Temple, Mikawa Province, triptych, 1879--Good impressions and condition
37x25cm. each approx. ¥180,000
- 102 YOSHIFUSA: Battle of Anegawa, triptych, 1859--Good impressions and condition
35x25cm. each approx. ¥110,000
- 103 YOSHIFUSA: Battle of Anegawa, triptych, 1859--Good impressions and condition, a few minor wormholes repaired
35.8x24.7cm. each approx. ¥150,000
- 104 KUNIHISA: Sato (Kato) Kiyomasa, triptych, 1858--Good impressions and condition
35.8x24.6cm. each approx. ¥120,000
- 105 YOSHIKAZU: Battle of Shizugatake, from *Taiheiki* (Tale of grand pacification), triptych, 1862--Fine impressions and condition except faint fold lines
36.5x25.5cm. each approx. ¥180,000
- 106 YOSHITORA: Bout between Sato Masakiyo (Kato Kiyomasa) and Konda Tadakazu (Honda Tadakatsu), triptych, 1866--Good impressions and condition, some very slight stains and faint centerfold on right panel
37.1x25.3cm. each approx. ¥150,000
- 107 CHIKANOBU: *Moko shurai no zu* (Scene of Mongol invasion), triptych, 1891--Good impressions and condition, tear on center panel restored, faint centerfold
36.8x24.9cm. ¥180,000
- 108 YOSHITORA: Parody of the battle of Shimonoseki or British invasion, illustrated as Mongolian invasion, triptych, 1866--Good impressions and condition, a few pinhole worming
35.9x24.5cm. each approx. ¥250,000
- 109 YOSHIIKU: Marigase Shuya, from *Eimei nijuhasshuku* (Twenty-eight forms of murders with verse), 1867--Good impression and condition, very slightly soiled, a few minute wormholes repaired, very slight damage long lower edge
37.1x24.8cm. ¥170,000
- 110 YOSHIIKU: Sano Jirozaemon, from the same series as above, 1867--Good impression and condition, very slightly soiled, very slight damage along edges
37x24.5cm. ¥250,000
- 111 YOSHITOSHI: Shibata Iganokami Katsutoyo, from *Kaidai hyakusen so* (Selection of one hundred warriors), 1868--Fine impression and condition
36.9x24.7cm. ¥240,000
- 112 YOSHITOSHI: Aizu (Uesugi) Kagekatsu, from the same series as above, 1868--Good impression and condition, a minor worming on lower right corner repaired, very slightly creased
36x24.5cm. ¥250,000
- 113 YOSHITOSHI: Obatanosuke Nobuyo, from the same series as above, 1868--Good impression and condition, very slightly soiled, slightly worn
36x24.5cm. ¥140,000
- 114 YOSHITOSHI: Onikojima Yataro, from the same series as above, 1868--Good impression and condition, minor paper flaw
36.7x24.4cm. ¥260,000
- 115 YOSHITOSHI: Fourth shogun Tsunayoshi, from *Tokugawa jiseki enkan kiji* (Exploit of Tokugawa shogunate), triptych, 1875--Good impressions and condition, very slightly soiled, binding holes in upper margin
37x25.5cm. each approx. ¥140,000
- 116 YOSHITOSHI: *Adachigahara hitotsuya no zu* (A solitary house of Adachigahara), pale blue pigment where rope is biting to woman's skin, vertical diptych, 1885--Fine impressions, good condition, fold line along some edges, slightly trimmed
36.5x23.5cm. each approx. ¥1,800,000
- 117 YOSHITOSHI: Kintaro capturing a giant carp, vertical diptych, 1885--Fine impressions, good condition, fold line along some edges, slightly trimmed
36.2x24.4cm. each approx. ¥1,400,000
- 118 YOSHITOSHI: *Inaka Genji* (Rustic Genji), vertical diptych, c.1885--Good impressions and condition, minor tear on top corners on upper panel repaired, faint vertical and horizontal centerfold
36.1x25.7cm. each approx. ¥450,000
- 119 YOSHITOSHI: *Inaka Genji* (Rustic Genji), vertical diptych, 1885--Good impressions and condition, very slightly soiled and toned, minor tear on lower left corner of each panel repaired
37.6x26cm. each approx. ¥550,000
- 120 YOSHITOSHI: *Mongaku shonin aragyo no zu* (Picture of the penance of the priest Mongaku), vertical diptych, 1900--Fine impressions, good condition, fold line along some edges, slightly trimmed
36x24.2cm. each approx. ¥600,000
- 121 YOSHITOSHI: *Haso no tsuki* (Moon through a crumbling window), from *Tsuki hyakushi* (One hundred aspects of the moon), 1886--Good impression and condition, a hole
37.1x24.8cm. ¥150,000
- 122 YOSHITOSHI: *Genji Yugao no maki* (Yugao, a chapter from the Tale of Genji), from the same series as above, 1886--Good impression, fine condition
36.7x25cm. ¥800,000

- 123 YOSHITOSHI: The spirit of Komachi cherry tree, from *Shinkei sanjurokkaisen* (The new forms of the thirty-six ghosts), first state, 1889--Fine impression, good condition, fold line in left margin, some margins narrow
35.5x24.5cm. ¥550,000
- 124 YOSHITOSHI: The ghost of Seigen haunting Sakurahime, from the same series as above, first state, 1889--Fine impression, good condition, very slightly soiled, fold line in left margin, some margins narrow
35.6x24.4cm. ¥380,000
- 125 YOSHITOSHI: Fujiwara no Hidesato shooting the centipede at the Dragon King's palace, from the same series as above, 1890--Fine impression, good condition, very slight offset stain, faint creases
36.9x25cm. ¥230,000
- 126 YOSHITOSHI: Sadanobu threatening a demon in the palace at night, from the same series as above, 1889--Fine impression and condition except narrow margins
35.5x23.5cm. ¥250,000
- 127 YOSHITOSHI: Shoki capturing a demon in a dream, from the same series as above, 1890--Fine impression and condition except narrow margins
35.5x23.6cm. ¥330,000
- 128 YOSHITOSHI: Giant ground spider, from *Yoshitoshi manga* (Yoshitoshi sketchbook), diptych, 1886--Good impressions and condition, very slightly stained, slight backing residue, two sheets joined
35.9x47cm. overall ¥200,000
- 129 YOSHITOSHI: Story of a strong woman Oiko of Takashima, diptych, 1889--Fine impressions and condition
35.5x24.3cm. each approx. ¥160,000
- 130 YOSHITOSHI: Courtesan Komurasaki committing suicide before the grave of Shirai Gompachi, from *Shinsen azuma nishiki-e* (New selection of eastern brocade pictures), diptych, 1886--Good impressions and condition, very slightly stained, a minute wormhole on right panel repaired
35.5x24.7cm. each approx. ¥130,000
- 131 YOSHITOSHI: Ikushima Shingoro, from the same series as above, diptych, 1885--Good impressions and condition, very slightly soiled
35.5x24.8cm. each approx. ¥180,000
- 132 YOSHITOSHI: Riot at Shimmei sumo, from the same series as above, diptych, 1886--Good impressions and condition
35.5x24cm. each approx. ¥140,000
- 133 YOSHITOSHI: Priest Ikkyu and Jigoku-dayu (Hell courtesan), from the same series as above, diptych, 1886--Good impressions and condition, slight offset stains, narrow margins
35.5x24.2cm. each approx. ¥130,000
- 134 YOSHITOSHI: Party at Koshida mansion, from the same series as above, diptych, 1886--Good impressions and condition, slight offset oxidation stain
35.5x24.7cm. each approx. ¥130,000
- 135 YOSHITOSHI: Sano Jirozaemon, from the same series as above, diptych, 1886--Good impressions and condition, fold line along left edge on the right panel
35.6x24.5cm. each approx. ¥150,000
- 136 YOSHITOSHI: *Me ga sameso* (Looking awaking), from *Fuzoku sanjuniso* (Thirty-two aspect of customs and manners), 1888--Good impression and condition, very slightly faded and toned
37.2x25.5cm. ¥240,000
- 137 YOSHITOSHI: *Yuho ga shitaso* (Looking as if she wants to stroll), from the same series as above, 1888--Fine impression and condition except very slight stain on upper left corner
37.5x25.4cm. ¥600,000
- 138 YOSHITOSHI: *Suzushiso* (Looking cool), from the same series as above, 1888--Good impression and condition
37.4x25.4cm. ¥180,000
- 139 SHUN'EI: Sumo match between Yotsuguruma and Yamaarashi, 1805--Good impression and condition, oxidation, very slightly soiled, a few minor wormholes repaired
35.5x23.6cm. ¥160,000
- 140 TOYOKUNI III: Sumo match between Jozan and Mitsuroko, triptych, c.1844--Good impressions and condition, very slightly soiled, a few minor wormholes repaired
37.6x25.5cm. each approx. ¥100,000
- 141 KUNITSUNA: View of dedicatory sumo match at Ryogoku, triptych, 1853--Good impressions and condition, very slightly soiled, a few minute wormholes repaired
36.5x25.3cm. each approx. ¥120,000
- 142 YOSHIIKU: Sumo match between Sennenkawa and Deshakayama, triptych, 1862--Good impressions and condition, center panel very slightly soiled and with a minor hole
37x25cm. each approx. ¥150,000
- 143 KUNIYOSHI: Portable shrine of Minami-Demmacho at Sanno Festival, c.1848--Good impression and condition, slightly soiled and worn, a few minute rear on edges
36.8x25.6cm. ¥220,000
- 144 UNSIGNED: *Namazu-e* (catfish picture, or earthquake picture), 1855--Good impression and condition, very slightly soiled and stained, wormholes
36x47cm. ¥200,000
- 145 KYOSAI: Seven deities acting the scene of Horyukaku of *Hakkenden* (the Tale of eight dog warriors), triptych, 1885--Fine impression and condition except a tiny hole on left panel
37x25cm. each approx. ¥850,000
- 146 KYOSAI: *Shimbo* (Endurance), No. 10 from *Gyosai rakuga* (Gyosai scribble), 1874--Good impression and condition, very slightly soiled and worn
36.5x24.7cm. ¥300,000
- 147 KUNITOSHI: *Shimpan neko no hanashi* (Newly published, cat's story), c.1880--Good impression and condition
36.9x24.3cm. ¥160,000
- 148 KUNITOSHI: *Shimpan neko seito tawamure asobi* (Newly published, playing cat students), 1887--Good impression and condition, slightly stained, worn, a minor tear repaired, centerfold
36x24.2cm. ¥120,000
- 149 SHOUN: Pheasant in snow, c.1900--Good impression and condition
37x18.9cm. ¥180,000
- 150 OHARA KOSON: Pair of goose under banana tree, published by Nishinomiya, c.1910--Good impression and condition
45.9x25.5cm. ¥120,000
- 151 OHARA KOSON: Eagle perched on a snow-covered pine branch, published by Nishinomiya, c.1910--Good impression and condition, very slightly stained
43.7x27.5cm. ¥100,000
- 152 ITO SHINSUI: *Hanabi* (Fireworks), from *Gendai bijin dai nishu* (Modern beauties -Second series), limited edition of 250, numbered on verso, 1932--Fine impression and condition
43.2x27.6cm. ¥800,000
- 153 ITO SHINSUI: *Kobai* (Red plum), from the same series as above, limited edition of 250, numbered on verso, 1933--Fine impression and condition
43x28cm. ¥750,000
- 154 PAUL JACOULET: A Fiji Girl, Oceania, limited edition of 150, 1935--Fine impression and condition
46.3x35.6cm. ¥380,000

- 155 SHUNSEN: Portrait of the actor Ichikawa Jukai, in the role of Kimura Shigenari, 1952--Good impression and condition 40.3x27.5cm. ¥120,000
- 156 KAWASE HASUI: Kojaku Cavern, Oga Peninsula, 1926--Fine impression, good condition, very slightly toned 38.5x26.3cm. ¥1,000,000
- 157 KAWASE HASUI: *Hoshitsukiyo, Miyajima* (Starry night at Miyajima), 1928--Fine impression and condition except very slight stain in upper margin 38.3x25.7cm. ¥800,000
- 158 KAWASE HASUI: *Yoru no chihan, Shinobazu Ike* (Night at Shinobazu Pond), 1932--Fine impression and condition 26.7x39.2cm. ¥1,400,000
- 159 KAWASE HASUI: *Haru no tsuki, Ninomiya Kaigan* (Ninomiya Beach under spring moon), first state, published by Doi Teiichi, 1932--Fine impression and condition 38.8x25.9cm. ¥1,100,000
- 160 KAWASE HASUI: *Kiri no asa, Yotsuya Mitsuke* (Misty morning at the castle gate of Yotsuya, first state, published by Doi Teiichi, 1932--Fine impression and condition 39.2x26.5cm. ¥1,000,000
- 161 KAWASE HASUI: Yui Village, Suruga Province, 1934--Fine impression and condition 39.1x26.2cm. ¥1,000,000
- 162 ISHIWATA KOITSU: *Inu shibai* (Dog performance), 1931--Fine impression and condition 39x25.8cm. ¥500,000
- 163 KASAMATSU SHIRO: *Shunshu Matsumotojo* (Matsumoto Castle, Shinano Province), 1934--Fine impression, good condition, very slightly stained 38.6x26cm. ¥300,000
- 164 TAKAHASHI HIROAKI: Toshogu Shrine, Ueno, c.1927--Fine impression, good condition, very slightly stained, faint horizontal fold, backing residue 37.8x17.1cm. ¥150,000
- 165 TSUCHIYA KOITSU: *Yuki no katada Ukimido* (Ukimido Hall in snow at Katada), later edition, 1934--Good impression and condition, very slight scratch 38.7x26.5cm. ¥180,000
- 166 MUSASHI TANDAI: Untitled (Druma), ink and watercolor on paper, framed, 2023 50x30cm. ¥100,000
- 167 MUSASHI TANDAI: Untitled (Slaying a monster carp), ink and watercolor on paper, framed, 2023 50x30cm. ¥120,000
- 200 KUNIYOSHI/KUNISADA: Eight roles of the actor Nakamura Utaemon IV, from *Azuma hakkei* (Eight views of Edo), eight sheets, complete, 1839--Good impressions and condition, slight damage and binding holes along right edge, tear on some corners restored 25x18.6cm. each approx. ¥80,000
- 201 KUNITERU: Scenes of the kabuki performance *Kanadehon Chushingura*, twelve sheets, complete, c.1848--Good impressions and condition, some sheets, slightly soiled, worn, and/or with wormholes, one sheet backed 24.6x36cm. each approx. ¥85,000
- 202 KOKUNIMASA: Scene of Sino-Japanese War, six-sheets, 1894--Good impressions and condition, very slightly stained and toned, some edges slightly damaged, lightly backed 35.6x23.4cm. each approx. ¥60,000
- 203 HANPO: The funeral procession of Meiji Emperor at Nijubashi, six-sheets, 1912--Good impressions and condition, very slightly stained and toned 38.1x25.5cm. each approx. ¥45,000
- 204 HIROSHIGE: Maisaka, from *Tokaido gojusan tsugi no uchi* (the fifty-three stations of the Tokaido), (the 'Gyosho' Tokaido), c.1840--Good impression and condition, very slightly soiled, a few minute wormholes, ownership seal and sticker on verso, centerfold 22.6x33.4cm. ¥70,000
- 205 HIROSHIGE: Chiryu, from *Gojusan tsugi meisho zue* (Pictures of famous places of the fifty-three stations), (the 'Upright' Tokaido), 1855--Good impression and condition, margins very slightly soiled, a minor wormhole in left margin 37.5x25.5cm. ¥90,000
- 206 HIROSHIGE: Minakuchi, from the same series as above, 1855--Good impression and condition, narrow margins, ownership seal and sticker on verso 35.4x23.4cm. ¥80,000
- 207 HIROSHIGE: *Harimaze* (Cutout pictures) print of provinces, comprising Higo, Hyuga, Osumi, Satsuma, and Iki, 1852--Good impression and condition, very slightly soiled and stained, backing residue 37.3x25.3cm. ¥50,000
- 208 TOYOKUNI III / HIROSHIGE II: Year-end market at Asakusa, from *Edo jiman sanju rokko* (Thirty-six famous things of Edo), 1864--Good impression and condition, very slightly soiled, right margin very slightly damaged 35.8x24.7cm. ¥35,000
- 209 TOYOKUNI III / HIROSHIGE II: Rice cake flower at Meguro Fudo Shrine, from the same series as above, 1864--Good impression, fair condition, slightly soiled and damaged 35.7x24.7cm. ¥30,000
- 210 TOYOKUNI III / HIROSHIGE II: Festival of Hanganji Temple at Ikegami, from the same series as above, 1864--Good impression and condition, very slightly soiled, minor repairs on top corners, lower margin narrow 35.7x24.6cm. ¥35,000
- 211 TOYOKUNI III / HIROSHIGE II: Starch syrup at Yodobashi, Horinouchi, from the same series as above, 1864--Good impression and condition, very slightly soiled a minor tear along right edge repaired 35.6x24.5cm. ¥35,000
- 212 KIYOCHIKA: Yushima moto-seido, from *Tokyo meisho* (Famous places of Tokyo), 1879--Good impression and condition, slightly toned 23.9x34.3cm. ¥95,000
- 213 KIYOCHIKA: View of Ariakero, Imado, from the same series as above, 1879--Good impression and condition, very slightly stained and toned, slight damage on upper corners, centerfold 23.3x33.7cm. ¥95,000
- 214 KIYOCHIKA: Hikifune Street, Koume in snow, from the same series as above, 1879--Good impression and condition, very slightly soiled, a few minute wormholes, centerfold 24.2x36cm. ¥80,000
- 215 KIYOCHIKA: Hexagonal teahouse at Ueno, from the same series as above, 1880--Good impression and condition, very slightly soiled, mar residue on verso corners 24.5x36.9cm. ¥80,000
- 216 KIYOCHIKA: Kagamigaura, Awa Province, 1897--Good impression and condition, centerfold 36.7x23.7cm. ¥35,000
- 217 SADANOBU II: *Tempozan yukei* (View of dusk at Tempozan), c.1887--Good impression and condition, very slightly soiled, a corner tear 12.1x16.9cm. ¥20,000
- 218 SADANOBU II: *Koraibashi yakei* (Night view of Korai Bridge), c.1887--Good impression and condition, margins very slightly soiled 11.9x16.5cm. ¥20,000

– PART II –

- 219 SADANOBU II: *Tsukiji okawa no aykei* (Night view of Tsukiji okawa), c.1887--Good impression and condition, margins very slightly soiled
12x16.9cm. ¥30,000
- 220 KUNITERU: View of Sakurada Gate, famous places of Tokyo, triptych, 1869--Good impressions and condition, very slightly soiled and stained, slight damage along edges repaired
36.5x25cm. each approx. ¥45,000
- 221 KYOSAI: View of the second domestic exposition at Ueno, triptych, 1881--Good impressions and condition, very slightly toned
37.5x25cm. each approx. ¥95,000
- 222 YOSHIMORI: Azuma Bridge, Sensoji Temple, and crowd visiting the wooden Mount Fuji, triptych, 1887--Good impressions, fair condition, slightly stained, toned, and worn, small hole on left panel
35.8x24.9cm. each approx. ¥28,000
- 223 IKUHIDE: *Kokyo gozoei ryakkei* (Abbreviated view of the imperial palace), triptych, 1888--Good impressions and condition, a minute stain on left panel, lightly backed
35.5x23.6cm. each approx. ¥28,000
- 224 EISEN: Standing beauty, vertical diptych, c.1830--Good impressions and condition, very slightly soiled, slightly toned
73x24.8cm. overall ¥45,000
- 225 EISEN: Standing beauty, vertical diptych, c.1829--Good impressions and condition, slightly soiled, stained, and toned
36.5x24.2cm. each approx. ¥45,000
- 226 EISEN: Beauty carrying an umbrella, vertical diptych, c.1818--Good impressions, fair condition, toned
37x24cm. each approx. ¥38,000
- 227 EISEN: *Fukagawa shinchī* (Pleasure quarters at Fukagawa), from Toto meisho awase (Collection of famous places of the eastern capital), c.1835--Good impression and condition, some minor wormholes
38.2x25.9cm. ¥70,000
- 228 KUNISADA: Girls playing while learning women's accomplishments (*Koto*, *Igo*, calligraphy, and painting), vertical diptych, c.1830--Good impressions, fair condition, toned, very slightly stained, a minor tear on horizontal centerfold
36.8x24.9cm. each approx. ¥55,000
- 229 KUNISADA: Standing beauty, *Yamamayu chirimen* (Crepe fabric made from mountain moth), titled Oatsurae tosei konomi (Fashionable dyed fabric made to an order), c.1830--Good impression and condition, very slightly soiled and stained, a few minor wormholes repaired
37.7x24.7cm. ¥90,000
- 230 KUNISADA: Beauty sewing, a square reserve on top right with Manzan dance, c.1830--Good impression and condition, slightly soiled and stained
38x25.8cm. ¥55,000
- 231 TOYOKUNI II: Bust portrait of a courtesan, titled *Takanawa kihan* (Returning sails at Takanawa), from *Azuma meisho shiba hakkei* (Famous places of Shiba, the eastern capital), c.1830--Good impression and condition, some minor wormholes repaired
38.1x26.2cm. ¥70,000
- 232 HIROSHIGE: Mutsumashiki (harmonious), from *Fukutoku kane no naru ki* (Money trees for virtuous women), c.1848--Good impression and condition, very slightly soiled and stained
37x25.5cm. ¥95,000
- 233 TOYOKUNI III: Genji and beauties in an interior, triptych, c.1848--Good impressions and condition, fold line along left edge on right panel
35.4x24.4cm. each approx. ¥70,000
- 234 TOYOKUNI III: Mitsuuji and beauties in an interior, titled *Kaze* (Wind), from *Kachofugetsu no uchi* (Flower, birds, wind, and moon), triptych, c.1848--Good impressions and condition, a few minute wormholes repaired, fold line along some edges, lightly backed
36x25cm. each approx. ¥70,000
- 235 TOYOKUNI III: Atago Shrine, Shiba, from *Edo meisho hyakunin bijo* (One-hundred famous places and beauties of Edo), 1857--Good impression and condition
37.2x25.5cm. ¥70,000
- 236 TOYOKUNI III: Kayabacho, from the same series as above, 1857--Good impression and condition, very slightly soiled, a minor worming on right edge
36.8x25.4cm. ¥70,000
- 237 TOYOKUNI III: Chapter 1, *Kiritsubo*, from *Genji gojuyōjo* (Fifty-odd romances of the Tale of Genji), diptych, 1858--Good impressions and condition, very slightly soiled, some minor wormholes repaired
36.6x26.1cm. each approx. ¥28,000
- 238 TOYOKUNI III: Chapter 2, *Hahakigi*, from the same series as above, diptych, 1857--Good impressions and condition, very slightly soiled and stained, some minute wormholes repaired with light backing, trace of centerfold
36.7x25.4cm. each approx. ¥28,000
- 239 TOYOKUNI III: Chapter 3, *Utsusemi*, from the same series as above, diptych, 1858--Good impressions and condition, very slightly soiled
36.7x25.4cm. each approx. ¥32,000
- 240 TOYOKUNI III: Chapter 4, *Suetsumuhana*, from the same series as above, diptych, 1857--Good impressions and condition, very slightly soiled, a few minute wormholes repaired
36.6x25.8cm. each approx. ¥35,000
- 241 TOYOKUNI III: Chapter 5, *Yugao*, from the same series as above, diptych, 1858--Good impressions and condition, very slightly soiled and stained, a few minor wormholes repaired with light backing, trace of centerfold
35.2x25.2cm. each approx. ¥28,000
- 242 TOYOKUNI III: Chapter 6, *Wakamurasaki*, from the same series as above, diptych, 1857--Good impressions and condition, very slightly soiled, a few minute wormholes repaired with light backing, trace of centerfold
36.5x25.5cm. each approx. ¥35,000
- 243 TOYOKUNI III: Chapter 9, *Momiji no ga*, from the same series as above, diptych, 1858--Good impressions and condition, very slightly soiled, a few minor wormholes repaired with light backing, trace of centerfold
36.6x25.4cm. each approx. ¥35,000
- 244 TOYOKUNI III: Chapter 10, *Hana no en*, from the same series as above, diptych, 1858--Good impressions and condition, very slightly soiled, a few minute wormholes repaired with light backing, trace of centerfold
36.6x25.2cm. each approx. ¥30,000
- 245 TOYOKUNI III: Chapter 13, *Yomogiu*, from the same series as above, diptych, 1858--Good impressions and condition, very slightly soiled, slightly stained, a few minute wormholes
35.3x24.6cm. each approx. ¥23,000
- 246 TOYOKUNI III: Chapter 14, *Aoi*, from the same series as above, diptych, 1857--Good impressions and condition, very slightly soiled, minor tear along lower edge on left panel and binding holes repaired
36.7x25.9cm. each approx. ¥33,000
- 247 TOYOKUNI III: Chapter 15, *Sakaki*, from the same series as above, diptych, 1858--Good impressions and condition, very slightly soiled, a few minute wormholes repaired with light backing, trace of centerfold
36.6x25.6cm. each approx. ¥32,000

- 248 TOYOKUNI III: Chapter 16, *Sekiya*, from the same series as above, diptych, 1858--Good impressions and condition, very slightly soiled, a few minute wormholes repaired with light backing, trace of centerfold
36.6x25.3cm. each approx. ¥32,000
- 249 TOYOKUNI III: Chapter 17, *E-awase*, from the same series as above, diptych, 1858--Good impressions and condition, a few minute wormholes restored
36.6x25.5cm. each approx. ¥35,000
- 250 TOYOKUNI III: Chapter 18, *Matsukaze*, from the same series as above, diptych, 1858--Good impressions and condition, 36612a few minute wormholes repaired with light backing, trace of centerfold
36.6x25.2cm. each approx. ¥32,000
- 251 TOYOKUNI III: Chapter 24, *Kocho*, from the same series as above, diptych, 1859--Good impressions and condition, lightly stained, a few minute wormholes repaired with light backing, trace of centerfold
36.3x25.3cm. each approx. ¥30,000
- 252 TOYOKUNI III: Chapter 25, *Hotaru*, from the same series as above, diptych, 1858--Good impressions and condition, very slightly soiled, a few minor wormholes repaired with light backing, trace of centerfold
36.6x24.9cm. each approx. ¥30,000
- 253 TOYOKUNI III: Chapter 26, *Tokonatsu*, from the same series as above, diptych, 1858--Good impressions and condition, very slightly soiled, a few minor wormholes repaired with light backing, trace of centerfold
36.6x25.3cm. each approx. ¥30,000
- 254 TOYOKUNI III: Chapter 30, *Fujibakama*, from the same series as above, diptych, 1858--Good impressions and condition, a few minute wormholes repaired
36.6x25.3cm. each approx. ¥35,000
- 255 TOYOKUNI III: Chapter 31, *Otome*, from the same series as above, diptych, 1858--Good impressions and condition, very slightly soiled, some minute wormholes repaired with light backing, trace of centerfold
36.5x25.2cm. each approx. ¥30,000
- 256 TOYOKUNI III: Chapter 33, *Fuji no Uraba*, from the same series as above, diptych, 1858--Good impressions and condition, very slightly soiled
36.5x24.9cm. each approx. ¥28,000
- 257 TOYOKUNI III: Chapter 34, *Wakana no jo*, from the same series as above, diptych, 1858--Good impressions and condition, very slightly soiled and stained, some minute wormholes repaired with light backing, trace of centerfold
36.5x25.3cm. each approx. ¥28,000
- 258 TOYOKUNI III: Chapter 35, *Wakana no ge*, from the same series as above, diptych, 1858--Good impressions and condition, a few minute wormholes repaired
36.6x25.6cm. each approx. ¥30,000
- 259 TOYOKUNI III: Chapter 38, *Suzumushi*, from the same series as above, diptych, 1861--Good impressions and condition, very slightly soiled, a few minute wormholes repaired with light backing, trace of centerfold
36.5x25.5cm. each approx. ¥30,000
- 260 TOYOKUNI III: Chapter 39, *Yugiri*, from the same series as above, diptych, 1858--Good impressions and condition, very slightly soiled, a few minute wormholes repaired with light backing, trace of centerfold
36.5x25.8cm. each approx. ¥35,000
- 261 TOYOKUNI III: Chapter 46, *Shii ga moto*, from the same series as above, diptych, 1859--Good impressions and condition, very slightly soiled, a few minor wormholes repaired with light backing, trace of centerfold
35.7x24.2cm. each approx. ¥33,000
- 262 KUNICHIKA: Portrait of the geisha Sono of Kinkyoro, from *Tokyo sanjuroku kaiseki* (Thirty-six restaurants of Tokyo), 1870--Good impression and condition, very slightly soiled and stained, a few minor wormholes repaired
37x24.8cm. ¥20,000
- 263 KUNICHIKA: *Emmusubi no tanoshimi* (Pleasure of matchmaking), from *Mitate juroku rakan no uchi* (Parody of sixteen pleasures), 1872--Good impression and condition
35.9x24.8cm. ¥33,000
- 264 CHIKANOBU: Picture of the first, second, and third Tokugawa shogun and their wives, triptych, c.1884--Good impression, fine condition
37x24.9cm. each approx. ¥38,000
- 265 CHIKANOBU: *Fukuiku* (Fragrant), from *Azuma fuzoku fuku zukushi* (Collection of happiness [fuku], daily life of the east), c.1889--Good impression and condition, very slightly soiled, narrow margins
35.2x23.8cm. ¥23,000
- 266 CHIKANOBU: *Fukuro* (Owl), from the same series as above, c.1889--Good impression and condition, very slightly soiled, narrow margins
35.4x23.8cm. ¥23,000
- 267 CHIKANOBU: *Fukusha* (Photographs), from the same series as above, 1890--Good impression and condition, very slightly soiled and stained, narrow margins
35.4x24.8cm. ¥23,000
- 268 CHIKANOBU: *Fukudoku* (Reading), from the same series as above, c.1889--Good impression and condition, very slightly soiled, narrow margins
35.4x23.7cm. ¥23,000
- 269 CHIKANOBU: *Henfuku* (Bats), from the same series as above, c.1889--Good impression and condition, very slightly soiled, narrow margins
35.3x24.4cm. ¥23,000
- 270 CHIKANOBU: *Kirifuku* (Spray), from the same series as above, c.1889--Good impression and condition, very slightly soiled, narrow margins
35.4x23.8cm. ¥23,000
- 271 CHIKANOBU: *Fukurin* (Margined morning glory), from the same series as above, c.1889--Good impression and condition, very slightly soiled and stained, narrow margins
35.4x24.6cm. ¥23,000
- 272 CHIKANOBU: *Yufuku* (Wealthy), from the same series as above, c.1889--Good impression and condition, very slightly soiled, narrow margins
35.3x23.8cm. ¥25,000
- 273 CHIKANOBU: The emperor and ladies viewing chrysanthemum, 1887--Good impression and condition, vertical fold lines near edges, slightly trimmed
35.4x23.8cm. each approx. ¥70,000
- 274 CHIKANOBU: *Kiken bettei no zu* (View of noble family's villa), triptych, 1890--Good impressions and condition, lightly backed
35.6x23.5cm. each approx. ¥45,000
- 275 TOSHIKATA: *Tsujigimi* (Streetwalker), from *Sanjurokkasen* (Thirty-six elegant selections), 1891--Good impression and condition, a minor ink smudge
37.1x25cm. ¥20,000
- 276 TOSHIKATA: *Uzuki* (Fourth month), from the same series as above, 1892--Good impression and condition, left margin very slightly stained
37x25.2cm. ¥20,000
- 277 KABURAGI KIYOKATA: Frontispiece of the novel, *Konjiki yasha*, written by Ozaki Koyo, 1898--Fine impression, good condition, original fold lines
30.5x22cm. ¥45,000

- 278 SHUNTEI: Act IV of the kabuki performance *Kanadehon Chushingura*, c.1810--Good impression and condition, very slightly soiled
23.7x35.3cm. ¥38,000
- 279 TOYOKUNI: Scene of a kabuki performance, diptych, c.1815--Good impressions and condition, very slightly soiled, a few minor wormholes
39.5x26.8cm. each approx. ¥85,000
- 280 TOYOKUNI III: Scene of a kabuki performance, triptych, c.1848--Good impressions and condition, a few minor wormholes repaired with light backing
36x25cm. each approx. ¥40,000
- 281 TOYOKUNI III: Scene of the kabuki performance *Kanadehon Chushingura*, triptych, c.1848--Good impressions and condition, very slightly soiled, slightly damaged along edges, binding holes
36.9x226cm. each approx. ¥35,000
- 282 TOYOKUNI III: Scene of act VII of the kabuki performance *Kanadehon Chushingura*, triptych, 1852--Good impressions and condition
36.3x25.1cm. each approx. ¥90,000
- 283 TOYOKUNI III: Scene of a kabuki performance, triptych, 1852--Good impressions and condition, a few minor wormholes repaired
36x25.1cm. each approx. ¥25,000
- 284 TOYOKUNI III: Shihei, from *Hana kurabe tenarai kagami* (Comparison of flowers from the calligraphy model book), 1852--Good impression and condition
37.3x25.8cm. ¥25,000
- 285 TOYOKUNI III: Matsuomaru, from the same series as above, 1852--Good impression and condition, very slightly soiled
37.8x26cm. ¥25,000
- 286 TOYOKUNI III: Komazawa and Asagao, Fujieda and Shimada, from *Tokaido gojusan tsugi no uchi* (Fifty-three stations of the Tokaido), 1857--Good impression and condition, very slightly soiled
37.5x26cm. ¥18,000
- 287 TOYOKUNI III: Shungatsuni and Tenjiku Tokubei, Maisaka and Arai, from the same series as above, 1857--Good impression and condition, very slightly toned, a few minor wormholes
37x25.7cm. ¥15,000
- 288 TOYOKUNI III: Scene of a kabuki performance, triptych, 1858--Good impressions and condition, very slightly soiled and worn
36.3x24.3cm. each approx. ¥28,000
- 289 TOYOKUNI III: Bust portrait of the actor Kataoka Nizaemon IIX, from *Imayo oshi-e kagami* (Mirror of modern oshi-e), printed on luxury paper, 1860--Fine impression, good condition, very slightly stained
39x26.2cm. ¥50,000
- 290 KUNICHIKA: Portrait of the actor Onoe Baiko (Kikugoro) in the role of cast repairer Matsugoro, 1860--Good impression and condition, very slightly soiled, lightly backed
35.8x23.9cm. ¥40,000
- 291 KUNICHIKA: Portrait of the actor Ichikawa Danjuro in the role of Akechi Mitsuhide, diptych, c.1871--Good impressions and condition, very slightly soiled, minor corner tears
36.7x25.3cm. each approx. ¥22,000
- 292 KUNICHIKA: Scene of a kabuki performance, triptych, 1872--Good impressions and condition, very slightly soiled and stained, backed
34.9x23.8cm. each approx. ¥12,000
- 293 KUNICHIKA: Portrait of the actor Onoe Kikugoro in the role of Oiwa, from *Azuma no hana Kunichika manga* (Sketches by Kunichika, the flower of the east), 1872--Good impression and condition, fold line along left edge, lightly backed
35.8x24.7cm. ¥40,000
- 294 KUNICHIKA: Scene of the kabuki performance *Ichinotani futaba gunki*, triptych, 1895--Good impressions and condition, slight offset stain, lightly backed
35.5x23.5cm. each approx. ¥35,000
- 295 KUNICHIKA: Scene of a kabuki performance, triptych, 1895--Good impressions and condition, very slightly soiled and stained, lightly backed
35.6x23.5cm. each approx. ¥18,000
- 296 CHIKASHIGE: Actors in a kabuki performance, triptych, 1876--Good impressions and condition
35.6x24.2cm. each approx. ¥13,000
- 297 CHIKASHIGE: Portrait of actors, triptych, 1881--Good impressions and condition, a minute stain on center panel
35.1x23.2cm. each approx. ¥18,000
- 298 KUNIMASA IV: Scene of a kabuki performance, triptych, 1886--Good impressions and condition, slight oxidation damage, faint centerfold
37.3x25cm. each approx. ¥18,000
- 299 HOSAI: Scene of a kabuki performance, triptych, 1903--Good impressions and condition, very slightly soiled and stained, lightly backed
36.2x23.4cm. each approx. ¥12,000
- 300 KUNISADA: Sanada Yoichi Yoshikazu, lower panel of a vertical diptych, 1811--Good impression and condition, slightly soiled and worn, a few minute wormholes and minute tear repaired
38.8x26.5cm. ¥80,000
- 301 YOSHIFUJI: The battle at Ichinotani, triptych, 1887--Good impressions and condition, margins very slightly soiled
36.6x24.8cm. each approx. ¥80,000
- 302 HIROSHIGE: *Soga monogatari zue* (Pictures of the tale of Soga Brothers), c.1844--Good impression and condition
37x25.1cm. ¥25,000
- 303 HIROSHIGE: *Soga monogatari zue* (Pictures of the tale of Soga Brothers), c.1844--Good impression and condition
37x25.2cm. ¥25,000
- 304 TOSHINOBU: Sano Genzaemon, from *Nihonshiryakuzu* (Abbreviated pictures of history of Japan), triptych, c.1877--Good impression and condition, very slightly soiled, a pinhole worming
36.3x24.5cm. ¥35,000
- 305 YOSHITOSHI: *Okina* (Old man), from *Tsuki hyakushi* (One hundred aspects of the moon), 1891--Good impression and condition, very slightly faded and soiled, narrow margins
35x23.6cm. ¥50,000
- 306 YOSHITOSHI: *Okubo Hikozaemon tarai tojo no zu* (Okubo Hikozaemon visiting the castle by a washtub), from *Shinsen azuma nishiki-e* (New selections of eastern brocade pictures), diptych, 1886--Good impressions and condition
35.5x24.5cm. each approx. ¥95,000
- 307 YOSHITOSHI: *Todai no hi* (Fire of a lantern), representing Tuesday, from *Mitate shichiyosei* (Parody of seven day of the week), 1878--Good impression and condition, very slightly soiled and worn, some minute wormholes
35.1x24.7cm. ¥35,000
- 308 YOSHITOSHI: *Ippuku nomitai* (Desire of smoking), from *Mitate tai zukushi* (Collection of desires), 1878--Good impression and condition, a minute worming on right edge repaired with light backing
36.5x25.2cm. ¥45,000
- 309 YOSHITOSHI: *Kuraso* (Looking dark), from *Fuzoku sanjuniso* (Thirty-two aspect of customs and manners), 1888--Good impression and condition, very slightly soiled, trimmed
35.1x23.8cm. ¥95,000
- 310 YOSHITOSHI: Priest Benkei and Ushiwakamaru (Minamoto Yoshitsune), from *Dai Nihon meisho kagami* (Mirror of heroes of great Japan), 1878--Good impression and condition
36.9x24.5cm. ¥60,000

- 311 YOSHITOSHI: Hojo Tokiyori, from the same series as above, 1878--Good impression and condition, very slightly soiled 36.5x24.5cm. ¥58,000
- 312 YOSHITOSHI: Uesugi Kenshin, from the same series as above, 1878--Good impression and condition 37x24.7cm. ¥60,000
- 313 YOSHITOSHI: Minamoto no Yoshimitsu, from the same series as above, 1879--Good impression and condition 36.6x24.4cm. ¥55,000
- 314 YOSHITOSHI: Hojo Ujiyasu, from the same series as above, 1879--Good impression and condition, very slightly soiled and stained 37.4x24.8cm. ¥60,000
- 315 YOSHITOSHI: Emperor Shimmu, from the same series as above, 1880--Good impression, fine condition 36.8x24.8cm. ¥60,000
- 316 YOSHITOSHI: Akushichibei Kagekiyo, from *Yoshitoshi* mushaburui (Yoshitoshi's courageous warriors), 1886--Fine impression, good condition, some margins narrow, fold line in left margin 35.6x24.4cm. ¥98,000
- 317 YOSHITOSHI: Scene of Satsuma Rebellion, triptych, c.1877--Good impressions and condition, some minor wormholes, minor tear on some upper corners 36.1x24cm. each approx. ¥18,000
- 318 YOSHITOSHI: Scene of the Satsuma Rebellion, triptych, 1877--Good impressions and condition, slight damage on some corners 36.8x25.5cm. each approx. ¥45,000
- 319 YOSHITOSHI: Scene of the Satsuma Rebellion, triptych, 1877--Good impressions and condition, minor wormholes 36.2x24.2cm. each approx. ¥55,000
- 320 HIROSHIGE III: Troops gather before the suspension bridge at Fukiage Garden, triptych, 1877--Fair impression, good condition 36.9x25cm. each approx. ¥17,000
- 321 GINKO: Scene of Satsuma Rebellion, triptych, 1877--Good impressions and condition, very slightly soiled and toned, vertical fold lines, backed 35.3x23.8cm. each approx. ¥12,000
- 322 KIYOCHIKA: Scene of the Satsuma Rebellion, triptych, 1877--Good impressions and condition, slightly soiled, stained, and damaged 35.5x24cm. each approx. ¥22,000
- 323 KIYOCHIKA: Kirino Toshiaki on a horseback, from *Kagoshima eiyuden* (Heroes of Kagoshima), 1877--Good impression and condition, slightly soiled, trimmed, light backing with ink sketches 34.5x23.4cm. ¥15,000
- 324 KIYOCHIKA: Maruyama Tsunayoshi, from the same series as above, 1877--Good impression and condition, very slightly soiled, trimmed, light backing with ink sketches 34.6x23.7cm. ¥15,000
- 325 KIYOCHIKA: Shinohara Kunimoto on a horseback, from the same series as above, 1877--Good impression and condition, very slightly soiled, trimmed, light backing with ink sketches 34.6x23.3cm. ¥15,000
- 326 KIYOCHIKA: Saigo Takamori, from the same series as above, 1877--Good impression and condition, very slightly soiled, trimmed 36x24.1cm. ¥25,000
- 327 KIYOCHIKA: Saigo Takamori, from the same series as above, 1877--Good impression and condition, very slightly soiled, trimmed, light backing with ink sketches 34.5x23.7cm. ¥18,000
- 328 SADANOBU: Saigo Takamori, from *Kagoshima-ken Jimmeiroku* (Directory of figures of Kagoshima Prefecture), 1877--Good impression and condition 25x18.5cm. ¥12,000
- 329 SADANOBU: Murata Shimpachi, from the same series as above, 1877--Good impression and condition 25x18.5cm. ¥9,000
- 330 SADANOBU: Ooka Tsunayoshi, from the same series as above, 1877--Good impression and condition 25x18.5cm. ¥9,000
- 331 SADANOBU: Kodama Hachinoshin, from the same series as above, 1877--Good impression and condition, very slightly soiled 25x18.5cm. ¥9,000
- 332 SADANOBU: Saigo Kohei, from the same series as above, 1877--Good impression and condition, very slightly stained 25x18.5cm. ¥9,000
- 333 SADANOBU: Beppu Shinsuke, from the same series as above, 1877--Good impression and condition 25x18.5cm. ¥10,000
- 334 SADANOBU: Fuchibe Takateru, from the same series as above, 1877--Good impression and condition 25x18.5cm. ¥9,000
- 335 SADANOBU: Army Major Yoshimatsu, from the same series as above, 1877--Good impression and condition 25x18.5cm. ¥9,000
- 336 YOSHIIKU: Tokyo Daily Newspaper, No. 3, 1874--Good impression and condition, very slight soiling and backing residue 36x24.3cm. ¥18,000
- 337 YOSHIIKU: Tokyo Daily Newspaper, No. 3, 1874--Good impression and condition 36.6x24.8cm. ¥20,000
- 338 YOSHIIKU: Tokyo Daily Newspaper, No. 111, 1874--Good impression and condition, very slight glue residue 35.8x23.8cm. ¥20,000
- 339 YOSHIIKU: Tokyo Daily Newspaper, No. 111, 1874--Good impression and condition, a minute damage hole on lower left 37x25cm. ¥20,000
- 340 YOSHIIKU: Tokyo Daily Newspaper, No. 185, 1874--Good impression and condition, very slight damage along edges, slight backing residue 35.7x24.2cm. ¥18,000
- 341 YOSHIIKU: Tokyo Daily Newspaper, No. 185, 1874--Good impression and condition 36.9x25cm. ¥20,000
- 342 YOSHIIKU: Tokyo Daily Newspaper, No. 220, 1874--Good impression and condition 35x23.5cm. ¥18,000
- 343 YOSHIIKU: Tokyo Daily Newspaper, No. 220, 1874--Good impression and condition, very slightly stained 36.4x24.5cm. ¥20,000
- 344 YOSHIIKU: Tokyo Daily Newspaper, No. 392, 1874--Good impression and condition 36.6x24.6cm. ¥20,000
- 345 YOSHIIKU: Tokyo Daily Newspaper, No. 428, 1874--Good impression and condition 36.6x24.7cm. ¥20,000
- 346 YOSHIIKU: Tokyo Daily Newspaper, No. 490, 1874--Good impression and condition 36.5x25.2cm. ¥20,000
- 347 YOSHIIKU: Tokyo Daily Newspaper, No. 512, 1874--Good impression and condition 35x23.7cm. ¥18,000
- 348 YOSHIIKU: Tokyo Daily Newspaper, No. 512, 1874--Good impression and condition 37.1x24.9cm. ¥20,000

- 349 YOSHIKU: Tokyo Daily Newspaper, No. 592, 1874--Good impression and condition
35.8x25.2cm. ¥20,000
- 350 YOSHIKU: Tokyo Daily Newspaper, No. 656, 1874--Good impression and condition
36.4x24.9cm. ¥20,000
- 351 YOSHIKU: Tokyo Daily Newspaper, No. 687, 1874--Good impression and condition, a few pinhole worming
37.1x25cm. ¥22,000
- 352 YOSHIKU: Tokyo Daily Newspaper, No. 694, 1874--Good impression and condition
36.1x24.1cm. ¥18,000
- 353 YOSHIKU: Tokyo Daily Newspaper, No. 694, 1874--Good impression and condition, very slightly toned
36.6x25cm. ¥20,000
- 354 YOSHIKU: Tokyo Daily Newspaper, No. 708, 1874--Good impression and condition
36.7x24.9cm. ¥22,000
- 355 YOSHIKU: Tokyo Daily Newspaper, No. 723, 1874--Good impression and condition, very slightly soiled and stained, very slight damage along edges
36.2x24.4cm. ¥18,000
- 356 YOSHIKU: Tokyo Daily Newspaper, No. 726, 1874--Good impression and condition
36.3x24.8cm. ¥20,000
- 357 YOSHIKU: Tokyo Daily Newspaper, No. 742, 1874--Good impression and condition
35.7x24.2cm. ¥18,000
- 358 YOSHIKU: Tokyo Daily Newspaper, No. 742, 1874--Good impression and condition, minor chip on lower left corner
36.6x25cm. ¥20,000
- 359 YOSHIKU: Tokyo Daily Newspaper, No. 813, 1874--Good impression and condition
36.9x24.8cm. ¥25,000
- 360 YOSHIKU: Tokyo Daily Newspaper, No. 822, 1874--Good impression and condition
36.5x25.3cm. ¥22,000
- 361 YOSHIKU: Tokyo Daily Newspaper, No. 832, 1874--Good impression and condition
36.3x24.6cm. ¥22,000
- 362 YOSHIKU: Tokyo Daily Newspaper, No. 833, 1874--Good impression and condition
36.5x25cm. ¥25,000
- 363 YOSHIKU: Tokyo Daily Newspaper, No. 851, 1874--Good impression and condition
36.5x24.6cm. ¥22,000
- 364 YOSHIKU: Tokyo Daily Newspaper, No. 856, 1874--Good impression and condition
37x24.8cm. ¥20,000
- 365 YOSHIKU: Tokyo Daily Newspaper, No. 865, 1874--Good impression and condition, a pinhole worming
36.7x24.5cm. ¥20,000
- 366 YOSHIKU: Tokyo Daily Newspaper, No. 873, 1874--Good impression and condition
36.5x24.7cm. ¥22,000
- 367 YOSHIKU: Tokyo Daily Newspaper, No. 877, 1874--Good impression and condition
37x24.9cm. ¥20,000
- 368 YOSHITOSHI: Yubin Hochi Newspaper, No. 452, 1875--Good impression and condition, slightly soiled, slight damage along left edge, binding holes repaired
36.3x24.4cm. ¥35,000
- 369 YOSHITOSHI: Yubin Hochi Newspaper, No. 568, 1875--Good impression and condition, pinholes on right
35.5x24.3cm. ¥35,000
- 370 YOSHITOSHI: Yubin Hochi Newspaper, No. 628, 1875--Good impression and condition, very slightly soiled, binding holes repaired
36.5x24.4cm. ¥35,000
- 371 YOSHITOSHI: Yubin Hochi Newspaper, No. 645, 1875--Good impression and condition
35.2x24.7cm. ¥35,000
- 372 YOSHITOSHI: Yubin Hochi Newspaper, No. 647, 1875--Good impression and condition, very slightly soiled, tape stains on top corners, slight damage along edges
36.9x24.7cm. ¥35,000
- 373 KUNISADA: Portrait of the sumo wrestler Jintsuriki Kunikichi, Nagano Pref., 1836--Good impression and condition, slightly soiled and worn, some wormholes repaired
36.9x25.2cm. ¥45,000
- 374 TOYOKUNI III: Sumo wrestlers entering the ring, triptych, 1846--Good impressions and condition, some minor wormholes repaired
37.6x26cm. each approx. ¥90,000
- 375 TOYOKUNI III: Portrait of the sumo wrestler Unryu Kyukichi, Fukuoka Pref., 1853--Good impression and condition, a few spot stains and minute wormholes
36.5x25.3cm. ¥36,000
- 376 TOYOKUNI III: Portrait of the sumo wrestler Kagamiwa Hamanosuke, Miyagi Pref., 1853--Good impression and condition, a few minute wormholes
37.2x25.5cm. ¥36,000
- 377 YOSHIFUJI: *Yokohama homare no shobu zuke* (Bout for Honor in Yokohama), 1861--Good impression and condition, a few minor wormholes repaired, faint crease on center, minor tear on top right corner restored
37.1x25.2cm. ¥60,000
- 378 YOSHITORA: *Kobitokoku* (Country of dwarfs), 1861--Good impression and condition, very slightly soiled, binding holes repaired
36.1x24.5cm. ¥85,000
- 379 TOYOHIRO: Fish vendor carrying bonito, c.1804--Good impression and condition, a few minute wormholes
34x7.3cm. ¥25,000
- 380 TOYOHIRO: Monkey trainer, c.1804--Good impression, fair condition, soiled, tear on top restored
28.1x7.38c. ¥10,000
- 381 TOYOHIRO: Fugire sweeping snow, c.1804--Good impression and condition, minor wormhole
34.2x7.3cm. ¥18,000
- 382 HIROSHIGE: Demon priest, c.1830--Good impression and condition, slightly stained, toned, and worn, some minor wormholes
22.5x16.4cm. ¥18,000
- 383 HIROSHIGE: Uncut sheet titled *Yomimono* (reading), *Harishigoto* (sewing), *Chanoyu* (tea ceremony), and *Utai* (chant), from *Shogeiko zue* (Pictures of lessons), c.1840--Good impression and condition, slightly stained, cut across upper sections repaired with light backing
25.5x35.8cm. ¥55,000
- 384 HIROSHIGE: Uncut sheet of comic pictures, monkey performance by Mimanoto no Yorimasa, and Noodle vendor by Taira no Atsumori, 1854--Good impression and condition, slightly soiled, a few minute wormholes repaired, fold line along right edge, lightly backed
35.2x24.9cm. ¥45,000
- 385 KUNIYOSHI: Badgers playing with their scrotum, c.1844--Good impression and condition, very slightly soiled and stained, minor wormholes repaired with light backing
36.5x24.4cm. ¥80,000
- 386 YOSHIMORI: Twelve days hygiene for measles, 1862--Good impression and condition, faint centerfold
36.8x25.5cm. ¥90,000

- 387 KUNICHIKA: *Hashika hompuku no zu* (Recovering from measles), signed *Ichiosai*, diptych, 1862--Good impressions and condition, very slightly soiled, a few minute wormholes, binding holes
36.5x25.8cm. each approx. ¥70,000
- 388 YOSHITSUYA: List of favorable diet and to be avoided for measles, titled *Hashika yojo no den* (Remedy for measles), 1862--Good impression and condition, very slightly soiled and stained
37.1x25.4cm. ¥80,000
- 389 YOSHITORA: Maudlin drinker, cheerful drinker, and quarrelsome drinker, 1862--Good impression and condition, very slightly worn, centerfold
37.4x25.5cm. ¥75,000
- 390 YOSHITOYO: Pirest Tetsugyu punishing measles demon, 1862--Good impression and condition, slightly stained, toned, and worn
37.2x25.2cm. ¥75,000
- 391 IKUHIDE: Teams of firemen, 1879--Good impression and condition, slightly soiled, a pinhole worming
36.2x24cm. ¥95,000
- 392 KUNITOSHI: Floats at the festival of Kanda Myojin Shrine, 1884--Good impressions and condition, slightly stained and trimmed, a few minute wormholes repaired with light backing
34.6x23.3cm. each approx. ¥55,000
- 393 KYOSAI: Tower of auspicious figures, vertical diptych, 1888--Good impressions and condition, very slightly soiled
37x25cm. each approx. ¥95,000
- 394 KIYOCHIKA: *Heta no yokozuki* (Dabster), from Kyoiku iroha tango (Educational words and alphabets), 1897--Good impression and condition, slightly stained
36.4x24.8cm. ¥20,000
- 395 KIYOCHIKA: Scene of Sino-Japanese War, triptych, 1894--Good impressions and condition, very slightly stained and toned, lightly backed
35.6x23.1cm. each approx. ¥25,000
- 396 KIYOCHIKA: Scene of Sino-Japanese War, triptych, 1894--Good impressions and condition, slightly toned, lightly backed
35.6x23.5cm. each approx. ¥28,000
- 397 BEISAKU: Japanese transport troops being attacked by local militia at Sanxia, Taiwan, triptych, 1895--Good impressions and condition, very slightly soiled and stained around edges
37.6x25cm. each approx. ¥75,000
- 398 YOSHIDA HATSUSABURO: Nagoya Castle, 1944--Good impression and condition
16.8x21.3cm. ¥48,000
- 399 OHARA KOSON: Untitled (Rice planting), c.1911--Fine impression and condition
26.6x12.5cm. ¥70,000
- 400 OHARA KOSON: Quail flying out from autumn glass, c.1900--Good impression and condition, a tiny stain
24.5x25.2cm. ¥90,000
- 401 OHARA KOSON: Heron, c.1910--Good impression and condition, very slightly stained
23.9x25.1cm. ¥70,000
- 402 OHARA KOSON: Stag and doe, c.1910--Good impression and condition, very slightly soiled
24x24.3cm. ¥50,000
- 403 OHARA KOSON: Monkey on a branch, c.1910--Good impression and condition, very slightly stained
24x25cm. ¥60,000
- 404 OHARA KOSON: Cuckoo in flight, c.1910--Good impression and condition, very slightly stained
23.7x24.7cm. ¥50,000
- 405 SHOUN: Pheasant in snow, c.1900--Good impression and condition, slightly toned and trimmed
34.3x18.4cm. ¥95,000
- 406 SHUNSEN: Portrait of the actor Bando Mitsugoro VII, in the role of a spear holder, without publisher's seal, 1951--Fine impression and condition
41x28.4cm. ¥90,000
- 407 SHUNSEN: A bust portrait of the actor Nakamura Tokizo III in the role of a barrel merchant Osen, 1955--Good impression and condition, very slightly stained, title, actor's name, and date are written in brush
39.8x26.5cm. ¥50,000
- 408 KITANO TSUNETOMI: Courtesan Umegawa, from the play Meido hikyaku, 1923--Good impression and condition, very slightly stained and toned
42x29.4cm. ¥40,000
- 409 ITO SHINSUI: Peony, c.1950--Good impression and condition
27x38.8cm. ¥45,000
- 410 ITO SHINSUI: Beauty and clock, published by Hotta watchmaker, 1964--Good impression and condition
35.5x27.2cm. ¥50,000

通信販売のご案内

掲載品は特記なき限り真作であることを保障いたします。ご希望により詳細な状態をお知らせいたします。

日本国内への発送費用は書籍、複製版画類を除き無料です。海外への発送は実費を頂戴いたします。

品物のお引渡しは原則として全額支払後となります。

万一、購入された作品がお気に召さなかった場合の返品はご自由です。作品が原状にて7日以内に返送されることを原則といたします。

国内からのご送金は郵便振替、銀行振込、現金書留のいずれでも結構です。海外からの場合は国際郵便為替、または日本円での銀行送金でお願いいたします。送金手数料はお客様負担となります。又、主要クレジットカードでのお支払もお受けしております。その他のお支払方法につきましてはお問い合わせください。

商品の表示価格は消費税を含みます。

CONDITIONS OF SALE

All lots, unless noted, are guaranteed genuine. Condition reports are available upon request.

Shipping can be arranged within Japan without charge (except books and reproductions). Shipping to overseas is extra.

Purchase will not be transferred until payment in full has been received.

Purchase can be returned in case of dissatisfaction. Refund to be made provide that the purchase is returned within 7 days in its original condition at purchaser's cost.

For orders within Japan, payments can be made by postal transfer, bank transfer, or registered mail. For those from overseas, payments to be made by international postal money order or bank transfer in Japanese Yen. Bank charges are at purchaser's cost. Payment by major credit cards is also accepted. Other payment methods can be consulted.

原書房

101-0051

東京都千代田区神田神保町2-3

Tel 03 5212 7801

Fax 03 3230 1158

ホームページ <http://www.harashobo.com>

eメール ukiyoe@harashobo.com

HARA SHOBO

2-3 Kanda Jimbocho, Chiyoda-ku

Tokyo 101-0051 Japan

Tel +81 (0)3 5212 7801

Fax +81 (0)3 3230 1158

Website <http://www.harashobo.com>

e-mail ukiyoe@harashobo.com

FREE CATALOGUE

¥ 0